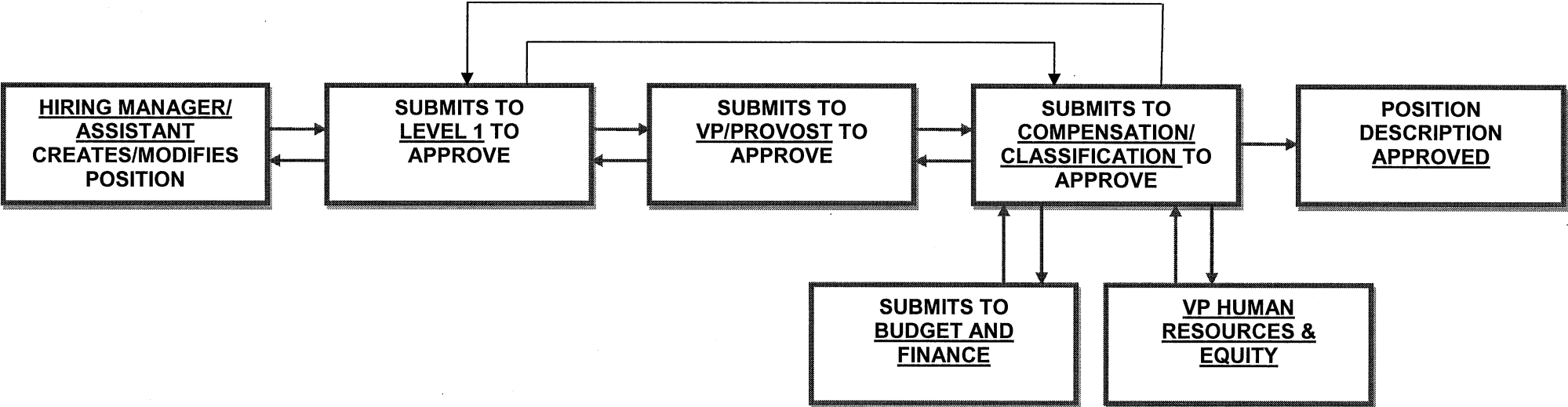


# Broward College

## Position Description

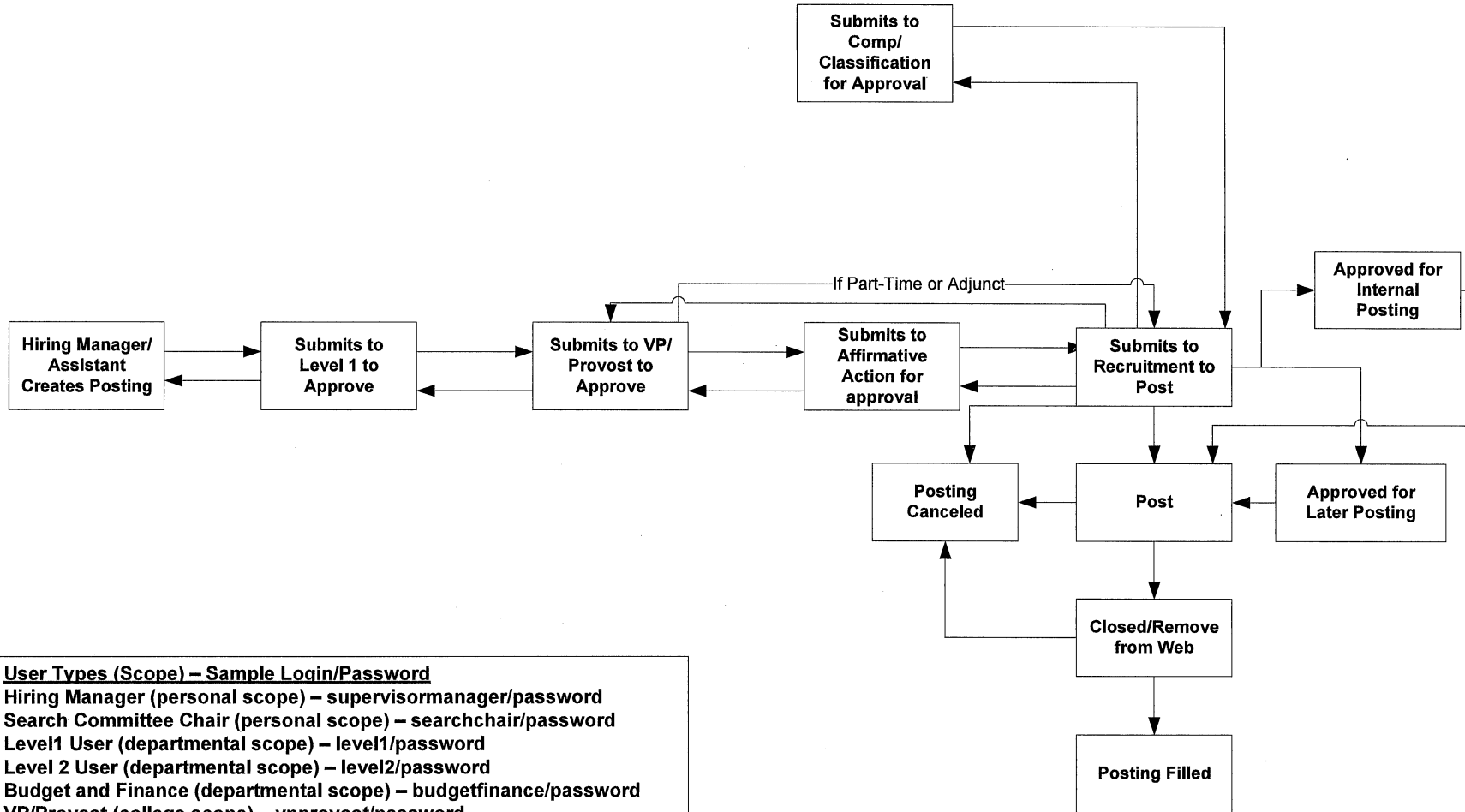


- User Types (Scope) – Sample Login/Password**
- Hiring Manager (personal scope) – supervisormanager/password
  - Search Committee Chair (personal scope) – searchchair/password
  - Level1 User (departmental scope) – level1/password
  - Level2 User (departmental scope) – level2/password
  - Budget and Finance (departmental scope) – budgetfinance/password
  - VP/Provost (college scope) – vpprovost/password
  - President (college scope) - president/password
  - Recruitment (college scope) – recruit/password
  - Comp/Classification (college scope) – humanresources/password
  - VP of HR (college scope) – vpofhr/password
  - Affirmative Action (college scope) – affirmativeaction/password

# Broward College (539)

## Posting

11/20/2008



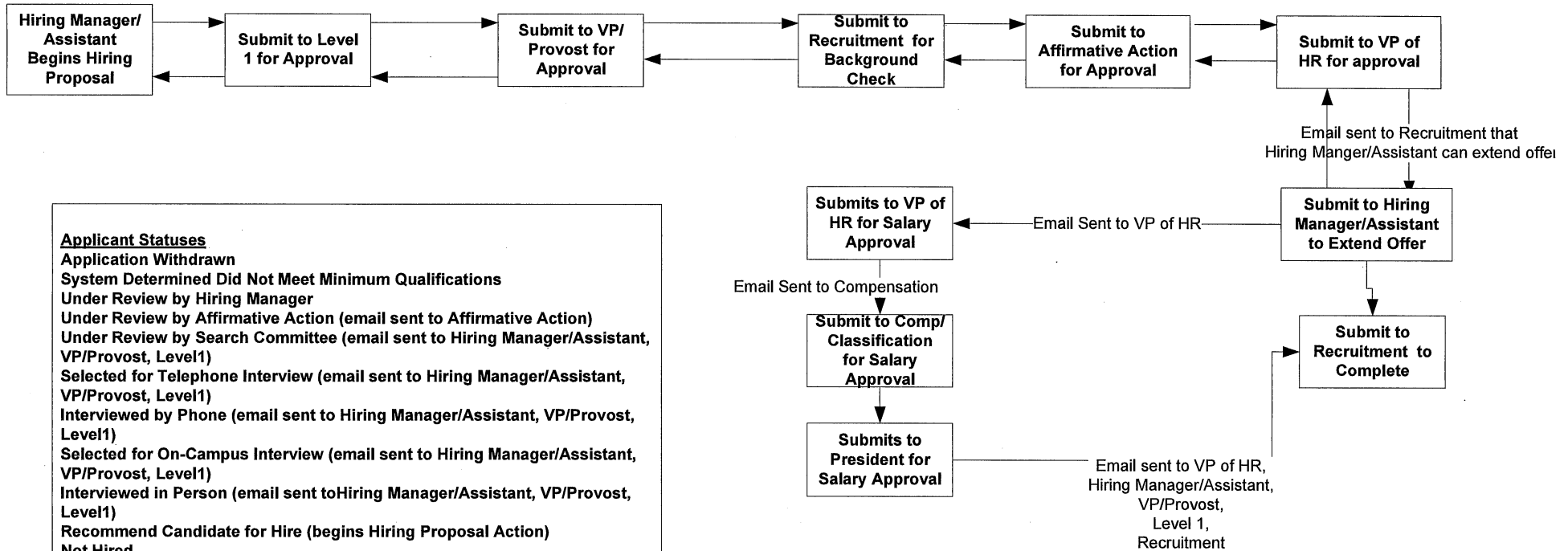
**User Types (Scope) – Sample Login/Password**

- Hiring Manager (personal scope) – supervisormanager/password
- Search Committee Chair (personal scope) – searchchair/password
- Level1 User (departmental scope) – level1/password
- Level 2 User (departmental scope) – level2/password
- Budget and Finance (departmental scope) – budgetfinance/password
- VP/Provost (college scope) – vpprovost/password
- President (college scope) – president/password
- Recruitment (college scope) – recruit/password
- Comp/Classification (college scope) - humanresources/password
- VP of HR (college scope) – vpofhr/password
- Affirmative Action (college scope) – affirmativeaction/password

# Broward College (539)

## Hiring Proposal

11/20/2008



### Applicant Statuses

Application Withdrawn  
 System Determined Did Not Meet Minimum Qualifications  
 Under Review by Hiring Manager  
 Under Review by Affirmative Action (email sent to Affirmative Action)  
 Under Review by Search Committee (email sent to Hiring Manager/Assistant, VP/Provost, Level1)  
 Selected for Telephone Interview (email sent to Hiring Manager/Assistant, VP/Provost, Level1)  
 Interviewed by Phone (email sent to Hiring Manager/Assistant, VP/Provost, Level1)  
 Selected for On-Campus Interview (email sent to Hiring Manager/Assistant, VP/Provost, Level1)  
 Interviewed in Person (email sent to Hiring Manager/Assistant, VP/Provost, Level1)  
 Recommend Candidate for Hire (begins Hiring Proposal Action)  
 Not Hired  
 Offer Letter Extended, Not Accepted (need to select Not hired reason)  
 Hired

### Not Hired Reasons

Does not meet minimum qualifications  
 Not Authorized to work in the US  
 Declined Job Offer – Salary  
 Declined Job Offer – Other  
 Failed to Show for Interview  
 Unfavorable Reference Check  
 Other  
 Interviewed – Experience Does Not Match  
 Unable to Contact  
 Withdrew Application

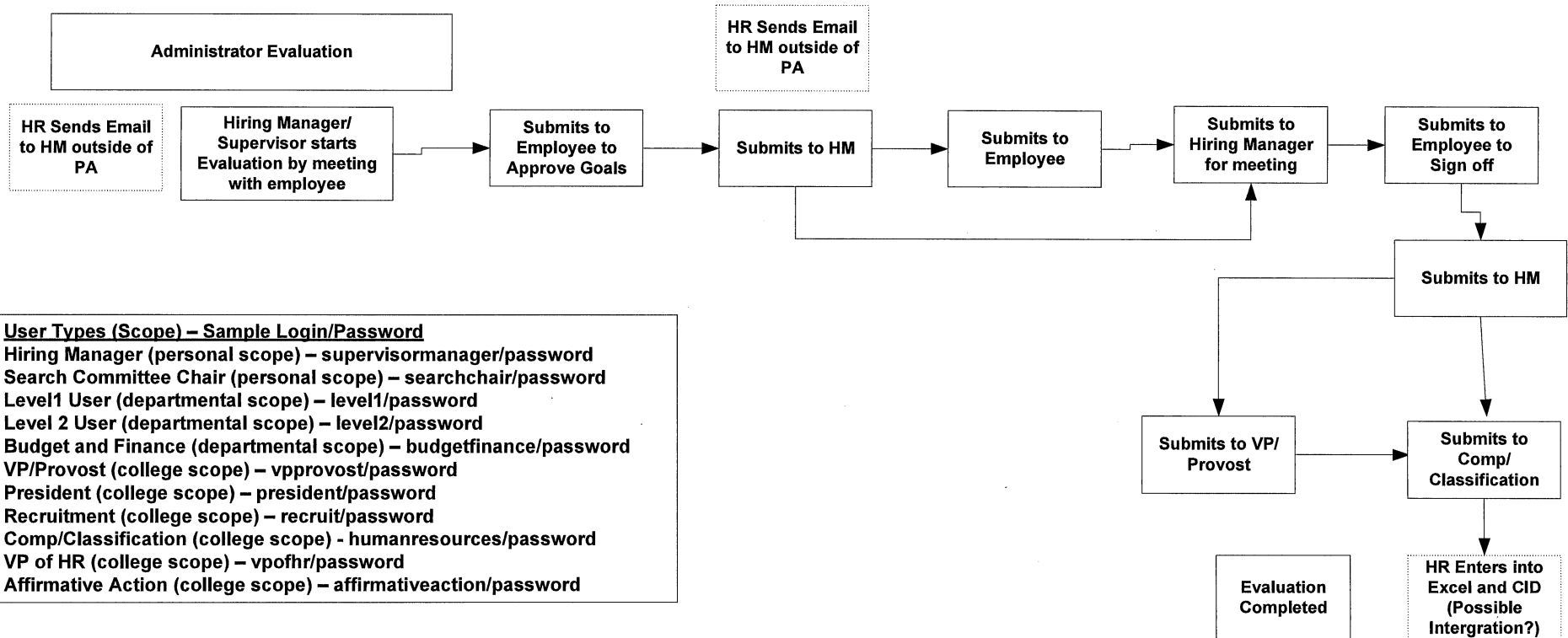
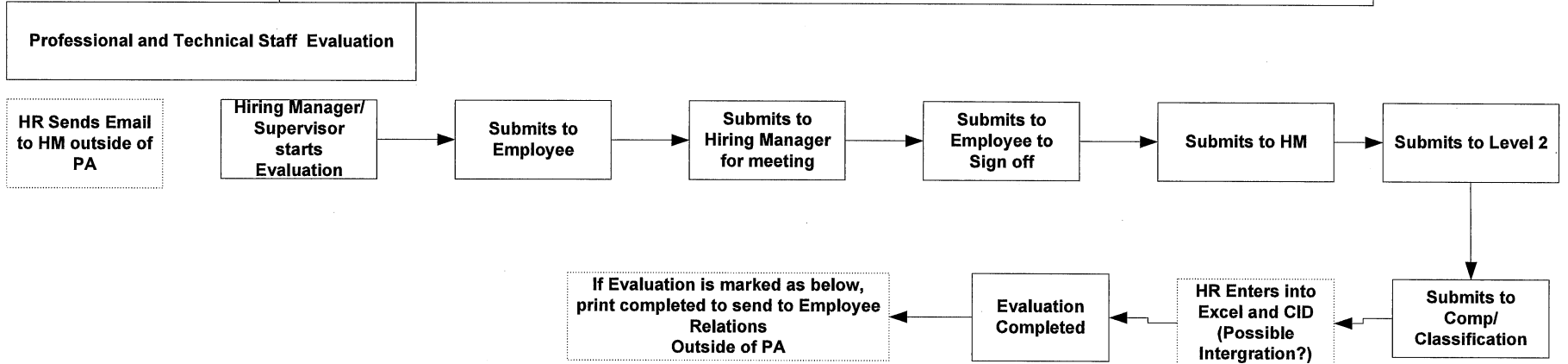
### User Types (Scope) – Sample Login/Password

Hiring Manager (personal scope) – supervisormanager/password  
 Search Committee Chair (personal scope) – searchchair/password  
 Level1 User (departmental scope) – level1/password  
 Level 2 User (departmental scope) – level2/password  
 Budget and Finance (departmental scope) – budgetfinance/password  
 VP/Provost (college scope) – vprovost/password  
 President (college scope) – president/password  
 Recruitment (college scope) – recruit/password  
 Comp/Classification (college scope) - humanresources/password  
 VP of HR (college scope) – vpofhr/password  
 Affirmative Action (college scope) – affirmativeaction/password

# Broward College (539)

## Performance Evaluation

11/20/2008



- User Types (Scope) – Sample Login/Password**
- Hiring Manager (personal scope) – supervisormanager/password
  - Search Committee Chair (personal scope) – searchchair/password
  - Level1 User (departmental scope) – level1/password
  - Level 2 User (departmental scope) – level2/password
  - Budget and Finance (departmental scope) – budgetfinance/password
  - VP/Provost (college scope) – vprovost/password
  - President (college scope) – president/password
  - Recruitment (college scope) – recruit/password
  - Comp/Classification (college scope) - humanresources/password
  - VP of HR (college scope) – vpothr/password
  - Affirmative Action (college scope) – affirmativeaction/password