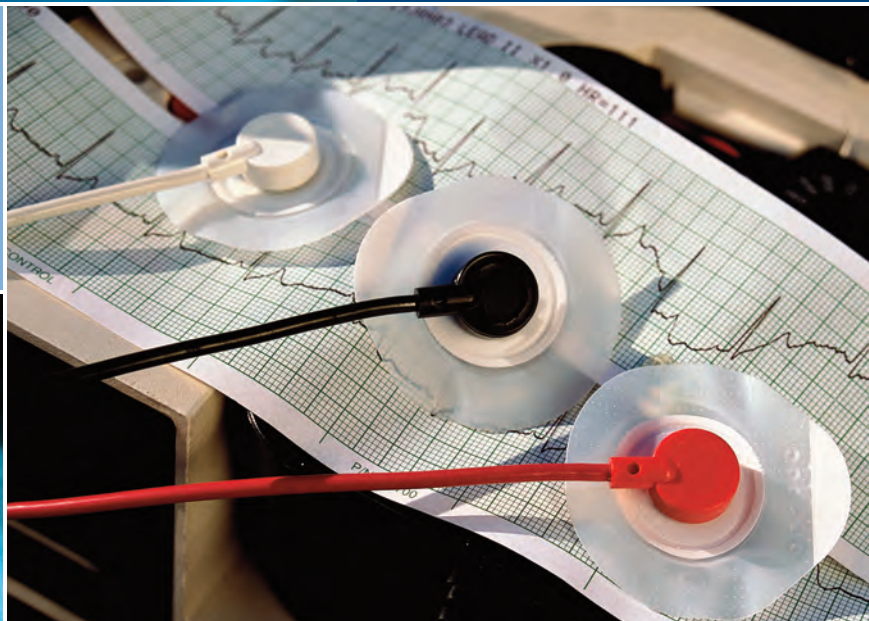


Continuing Education & Workforce Development for Health Sciences

Term 2

Course
Schedule

January 5 -
May 2, 2012



www.broward.edu/cehealth

Welcome Health Professionals

December 1, 2011

Dear Health Professional:

It's hard to believe that the winter schedule is here. Thank you for continuing to support our programs.

As you look through the brochure, we are still presenting high quality offerings at a reasonable cost. As stated in our philosophy, "Continuing Education recognizes its responsibility to assist health professionals to meet current and projected educational needs by providing appropriate health care information." We believe that appropriate interprofessional collaboration in programming fosters interaction among health care practitioners that improves the quality of health care.

The success of our program is due to the efforts of the adjunct faculty, advisory committee members and the many task force participants. Their knowledge, experience and time is of benefit to all health care professionals we serve.

We hope you will enroll this term in courses that will be informative and meet your professionals goals. Keep us aware of your needs for new or expanded offerings. Your input is vital!

Sincerely,



D. Katherine Jackson, Dean
Continuing Education and Workforce Development, Health Sciences



BROWARD COLLEGE
Continuing Education and
Workforce Development

Center for Health
Science Education
A. Hugh Adams
Central Campus
3501 S.W. Davie Road
Davie, Florida 33314

954-201-7800
Fax # 954-201-6397

Table of Contents

CE BROKER PROVIDER #50-266

COURSE APPROVAL CODES

A NUMBER NEXT TO THE LETTER

INDICATES THE CONTACT HOURS

APPROVED FOR THE DESIGNATED AGENCY

- A** - American Association of Medical Assistants.
- C - Approved by Florida Board of Clinical Social Work, Marriage and Family Therapy, and Mental Health Counseling.
- CNA - Approved by the Florida Board of Nursing - Certified Nursing Assistants.
- D - Approved by the Florida Board of Dentistry.
- F - Approved by the Florida Council of Dietetics and Nutrition.
- L - Approved by the Florida Board of Clinical Laboratory Personnel.
- M - Approved by the Florida Board of Massage Therapy.
- N - Approved by Florida Board of Nursing.
- NHA - Approved by the Florida Board of Nursing Home Administrators.
- P - Approved by the Florida Board of Physical Therapy Practice.
- R - Approved by the Florida Board of Respiratory Care.
- X - Approved by the Florida Department of Health, Bureau of Radiation Control.
- XP - Approved by the Florida Department of Health, Bureau of Radiation Control. (Personal Development). No more than 3 of the 12 CE's may be classified as personal development.
- * - Course submitted for approval to designated agency.
- ❖ - Meets Mandatory AIDS Requirement. Check with licensing agency as to whether the AIDS course can also be used toward Continuing Education hours.
- - Meets Domestic Violence Requirement.
- ** - Please contact specific designated agency for approval.
- ★ - Prevention of Medical Errors

- LETTERS TO THE RIGHT OF THE COURSE TITLE INDICATE APPROVAL.
- CALL THE CONTINUING EDUCATION OFFICE AT 954-201-6768 FOR ADDITIONAL COURSE INFORMATION.

** INDICATES COURSES MAY BE APPROPRIATE FOR SPECIFIC DISCIPLINES

	PAGE
I. GENERAL INFORMATION	5-6
II. <u>ONLINE COURSES</u> (Profiles in Domestic Violence, Prevention of Medical Errors, AIDS Online, All Hazards, TB/OSHA, Basic Arrhythmia, AACN, Medical Surgical I, II & III)	7
III. COURSE LISTINGS	
CREDIT COURSES:	
Essentials of Nutrition and Diet Therapy (N, A**)	8
Magnetic Resonance Imaging (X ⁴⁸)	8
Refresher Nurse Update (N)	8-9
Vascular Sonography (X)	9
NON-CREDIT OFFERINGS:	
Advanced Cardiac Life Support (N, R)	10-11
Advanced Cardiac Life Support Recertification (R)	11-12
▲ AIDS (N, NHA, A**, D, T, L, X ^{P2} , P ² , F, C, M, CNA)	12
▲ AIDS Update Review (N, NHA, A**, D, T, L, X ^{P2} , P ² , F, C, M, CNA)	12
All Hazards Preparedness (N, P, D, T, C, L, R, M, F, CNA, X ^{P2})	12
Basic Arrhythmia Analysis (N)	13
Basic Life Support - CPR Renewal (A**, D, X ^{P3} , L, C, M, P, F)	14
Basic Life Support - Health Provider (A**, D ³ , X ^{P3} , L, C, M, P, F)	15
Computerized Tomography Imaging (X ⁴⁸)	16
Critical Care Essentials (AACN) (N)	16
■ Domestic Violence (N, A**, D, X ^{P2} , P, F, C, L, R, M, CNA)	16
EKG Interpretation: 12 EKG - Introduction (N, R)	17
Emergency Nursing (N, R)	17
Emerging Infectious Diseases (N, A**, D, R, L, F, T, X ^{P3})	17
Infectious Diseases: Antibiotic Associated	
Diarrhea (N, A**, D, R, L, T, F, X ^{P2})	18
Infectious Diseases: Sexually Transmitted	
Disease (N, A**, D, R, L, F, P, X ^{P2} , C)	18
Message Therapy: Intro. to Shiatsu Massage (N, M, CNA, P, R, F)	18
Neurological Topics: Parkinson's Memory Disorder and Dementia (N, C, L, D, CNA, P, R, F, X^{P2})	
Neurological Topics: Stroke Update (N, C, L, D, CNA, P, R, F, X ^{P2})	19
Nursing Simulation Lab (N, R)	19
OSHA Update: Bloodborne Pathogens & Tuberculosis (N, C, L, D, P, R, F, X^{P3}, CNA, M, A**)	
	20

Table of Contents

CONTINUED	PAGE
Pediatric Advanced Life Support - Provider (N, R)	20
Pediatric Advanced Life Support Retraining (R)	20
Position Emission Tomography (PET) (X ²⁴)	21
Prevention of Medical Errors (N, C, L, D, M, CNA, P, R, F, X ^{P2})	21-22
Trauma Nursing Core CS: TNCC (N)	22
IV. FACULTY BIOGRAPHIES	23-24
V. STUDENT REGISTRATION INFORMATION	25
VI. CAMPUS MAPS: A. HUGH ADAMS CENTRAL CAMPUS	26
NORTH CAMPUS	27
VII. CAMPUS/CENTER LOCATIONS	28
VIII. MAIL-IN REGISTRATION	29
IX. CREDIT CARD AUTHORIZATION	30

STUDENT PARKING: All students will be assessed a parking fee as part of their schedule which will allow them to receive a parking hang tag and park at any campus or center location for the term paid.

Students may request an exemption from the parking fee. Students who receive the exemption will not be assessed the parking fee, will not receive a parking hang tag and will be subject to the same traffic rules, regulations and fines should they park on campus after receiving the exemption.

After registering and paying for your class(es), print out your parking permit online at ce.broward.edu/parking (your auto tag number will be required).

PLEASE NOTE: Fees being charged for ACLS and BLS courses do not in any way constitute revenue to the Broward Chapter of the American Heart Association. As of May 7, 2011, FBN has adopted the position of the American Nurses Credentialing Center (ANCC). No CEU's will be provided for Basic Life Support and renewals. No CEU's for Advanced Cardiac Life Support renewals. Students taking more than one certification course (ACLS, PALS, NRP) will be awarded only 16 CEU's each biennium.

Effective June 1, 2009, the Basic Life Support (BLS) hours will not be counted toward the required biennium 23 CEU hours for Florida Board of Respiratory Care Rule 64B32-6.001

CE BROKER PROVIDER #50-266

COURSE APPROVAL CODES
A NUMBER NEXT TO THE LETTER
INDICATES THE CONTACT HOURS
APPROVED FOR THE DESIGNATED AGENCY

- A** - American Association of Medical Assistants.
- C - Approved by Florida Board of Clinical Social Work, Marriage and Family Therapy, and Mental Health Counseling.
- CNA - Approved by the Florida Board of Nursing - Certified Nursing Assistants.
- D - Approved by the Florida Board of Dentistry.
- F - Approved by the Florida Council of Dietetics and Nutrition.
- L - Approved by the Florida Board of Clinical Laboratory Personnel.
- M - Approved by the Florida Board of Massage Therapy.
- N - Approved by Florida Board of Nursing.
- NHA - Approved by the Florida Board of Nursing Home Administrators.
- P - Approved by the Florida Board of Physical Therapy Practice.
- R - Approved by the Florida Board of Respiratory Care.
- X - Approved by the Florida Department of Health, Bureau of Radiation Control.
- XP - Approved by the Florida Department of Health, Bureau of Radiation Control. (Personal Development). No more than 3 of the 12 CE's may be classified as personal development.
- * - Course submitted for approval to designated agency.
- ❖ - Meets Mandatory AIDS Requirement. Check with licensing agency as to whether the AIDS course can also be used toward Continuing Education hours.
- - Meets Domestic Violence Requirement.
- ** - Please contact specific designated agency for approval.
- ★ - Prevention of Medical Errors

General Information



PURPOSE

The Department of Continuing Education and Workforce Development provides continuing education offerings for health professionals seeking to update and increase their knowledge and skills on a continuum.

Courses may be geared specifically to one group of professionals or may be appropriate for a variety of health care providers.

We welcome contracted services and/or co-sponsorships with local health care organizations, agencies and/or associations to provide quality cost effective continuing education for health care facilities.

WHO SHOULD ATTEND

The program offerings are designed for health care professionals: mental health counselors, dental assistants, dental hygienists, dietitians, licensed practical nurses, medical assistants, clinical laboratory personnel, physical therapists & assistants, radiologic technologists, registered nurses, respiratory therapists, social workers, marriage and family therapists, school psychologists, and others. For further information regarding these courses contact Continuing Education and Workforce Development at 954-201-6768.

COURSE ATTENDANCE

- To receive contact hours, participants must attend the entire offering.
- Late arrival or early departure will result in loss of all credit.
- Partial credit is not possible.
- Call the Continuing Education and Workforce Development office at 954-201-6768 to confirm your registration before attending class.
- Register online at www.broward.edu/cehealth

TO REGISTER FOR HEALTH SCIENCES CONTINUING EDUCATION COURSES CALL 954-201-6768.

MISCELLANEOUS INFORMATION

Please bring your professional license, social security number, a #2 pencil, and a pen for sign in. A sweater may be needed for your comfort. Minors are not permitted in classrooms. Books listed are available at the bookstore located on the campus where the course is being offered. Offerings presented in this catalog are subject to change.

TERM 2 HOLIDAYS

Martin Luther King Jr.'s Birthday
January 16
(no day or evening classes)

Spring Break
March 5 -11
(no day or evening classes)

General Information

IMPORTANT NOTICE

It is imperative class attendees **MUST PROVIDE HEALTH CARE PROFESSIONAL LICENSE NUMBERS** during sign in. The information will be submitted to the appropriate state agencies for license renewal purposes.

CERTIFICATES

A certificate will be given to all participants who have completed the course and registration requirements. There will be a \$5 fee charged for duplicate certificates. Be sure to get your certificate at the conclusion of the course. Participants must attend the entire offering. Partial credit cannot be given. LATE ARRIVAL or EARLY DEPARTURE will result in loss of all hours.

CONTINUING EDUCATION CREDIT

CE Broker Provider #50-266

The Department of Continuing Education/Workforce Development is an approved provider for continuing education for:

- Florida Board of Clinical Laboratory Personnel JP3 (recognized by National Certifying Agency for Clinical Lab Personnel-Exp. 8/12). Approved by FL Board of Clinical Lab personnel.
- Florida Board of Clinical Social Work, Marriage & Family Therapy and Mental Health Counseling (BAP #73-Exp. 3/13).
- Florida Council of Dietetics and Nutrition
- Florida Board of Dentistry - Approved by Florida Board of Dentistry Provider #P00020.
- Florida Board of Massage Therapy (Florida Department of Health Provider #MCE129-Exp. 8/13)
- Florida Board of Nursing (FBN Provider #2163-Exp. 10/12); (CE Broker Provider #50-266)
- FBN-FL Board of Nursing - Certified Nursing Assistants (CE Broker Provider #50-266)
- Florida Board of Physical Therapy Practice
- Florida Department of Health, Bureau of Radiation Control. Provider #3200006.
- Florida Board of Respiratory Care
Effective June 1, 2009, the Basic Life Support (BLS) hours will not be counted toward the required biennium 24 CEU hours for Florida Board of Respiratory Care. Rule 64B32-6.001

CONTACT THE SPECIFIC DEPARTMENT ON THE FOLLOWING COURSE APPROVALS

- Medical Assisting - contact American Associate of Medical Assistants for information.

NOTE: To receive contact hours, participants **MUST ATTEND** the ENTIRE offering and successfully complete the course objectives. Partial credit is not possible. Late arrival or Early departure will result in loss of all credit.

Continuing Education and Workforce Development Staff

KATHERINE JACKSON
DEAN

Phone: 954-201-6773

Fax: 954-201-6397

e-mail: kjackson@broward.edu

KATHLEEN KING
DIRECTOR

NURSE SPECIALTY PROGRAMS

Phone: 954-201-6440

Fax: 954-201-6397

e-mail: kking1@broward.edu

PATRICIA CROSON
EXECUTIVE ASSISTANT

Phone: 954-201-6783

Fax: 954-201-6397

e-mail: pcroson@broward.edu

LINDA DECURZIO
ADMINISTRATIVE SPECIALIST

Phone: 954-201-6768

Fax: 954-201-6397

e-mail: ldecurzi@broward.edu

If you wish to be on our
mailing list, please call
954-201-6768.

Online Courses

Self-Instructional

Log-in requires user name and password.

User name: Your BC e-mail user name in lowercase.

Password: Your myBC PIN number. Before logging in, it is highly recommended that you perform a browser check to see if your computer is properly configured to use the Blackboard Learning System. Also, please read the information regarding Pop-up Blockers and Java Security.



ONLINE COURSES

Courses are completed ONLINE utilizing the student's personal computer. Students MUST have an internet connection using Microsoft Internet Explorer, Netscape, AOL, Mozilla, Safari, or Firefox. Once registered for the course, students need to go to the Blackboard eLearning System (elearning.broward.edu).

PROFILES IN DOMESTIC VIOLENCE

COURSE NO. CAE 0615 2 CONTACT HRS. FEE: \$ 28.40
(NURSING/CNA/PT/DENTAL/CLSW/LMHC/MF THRPY/CL. LAB/
MSSG THRPY/RESPIRATORY/FLCNSL DIET & NUTRITION)
Ref. No. 420014

PREVENTION OF MEDICAL ERRORS

COURSE NO. CAE 0617 2 CONTACT HRS. FEE: \$ 19.95
(NURSING/CNA/PT/DENTAL/CLSW/LMHC/MF THRPY/CL. LAB/
RESPIRATORY/FLCNSL DIET & NUTRITION)
Ref. No. 420013

AIDS ONLINE

COURSE NO. CAE 0616 4 CONTACT HRS. FEE: \$ 39.90
(NURSING/CNA/PT/DENTAL/CL.SW/LMHC/MF THRPY/
CL.LAB/RESPIRATORY/
FLCNSL DIET & NUTRITION)
Ref. No. 420015

ALL HAZARDS PREPAREDNESS

COURSE NO. CAE 0620 2 CONTACT HRS. FEE: \$ 19.95
Meets new hospital requirements for All Hazards/Emergency Preparedness
Bioterrorism training
Ref. No. 420016

OSHA UPDATE: BLOOD BORNE PATHOGEN, TB, AND H1N1 INFLUENZA VIRUS

COURSE NO. CAE 0618 6 CONTACT HRS. FEE: \$ 27.42
(NURSING/CNA/PT/DENTAL/CLSW/LMHC/MF THRPY/CL. LAB/MSSG. THRPY, RESPIRA-
TORY/FLCNSL DIET & NUTRITION)
Ref. No. 420012

Basic Arrhythmia Analysis I (Nursing)

COURSE NO. CAE 0518 32 CONTACT HRS. FEE: \$281.80
Ref. No. 420017

AACN - Critical Care Nursing (Nursing)

COURSE NO. CAE 0548 69 CONTACT HRS. FEE: \$650.12
Ref. No. 420018 (Pre-requisite: Basic Arrhythmia Analysis)

Medical Surgical Nursing I (Nursing)

COURSE NO. CAE 0551 20 CONTACT HRS. FEE: \$314.50
Ref. No. 420019

Medical Surgical Nursing II (Nursing)

COURSE NO. CAE 0552 30 CONTACT HRS. FEE: \$396.75
Ref. No. 420020

Medical Surgical Nursing III (Nursing)

COURSE NO. CAE 0553 30 CONTACT HRS. FEE: \$396.75
Ref. No. 420021

Credit Courses

ESSENTIALS OF NUTRITION AND DIET THERAPY

COURSE NO: HUN 1202

48 CONTACT HOURS/3 CREDITS

A study of nutritional science, the nutrient, interrelationships and the nutritional needs of persons at various stages of the life cycle. Particular emphasis will be placed on diet therapy in the modification of disease process. **REQUIRED TEXT-BOOK:** *Nutrition: Science and Applications*, Fourth Edition (Smolin and Grosvenor). **REQUIRED WORKBOOKS:** contact Continuing Education office, 954-201-6768.

■ Ref. No. 419325

Date & Time: Monday, January 9-April 30, 6-9:00 p.m.

Location: North Campus, Bldg. 41, Room TBA

Faculty: June Small, MS, RD

■ Ref. No. 419321

Date & Time: Wednesdays, January 11-May 2, 6-9:00 p.m.

Location: Central Campus, Bldg. 8, Room 222

Faculty: June Small, MS, RD

MAGNETIC RESONANCE IMAGING (INTRODUCTION)

COURSE NO: RTE 2575

48 CONTACT HOURS/3 CREDITS

A study of the clinical applications and principles of magnetic resonance imaging. Basic MR physics, history, hardware, safety, and important aspects of the MR exam are among the topics covered to introduce the student to the MR imaging technology profession. **PRE-REQUISITE:** Graduation from a two year allied health program. **REQUIRED TEXTBOOK:** *Magnetic Resonance Imaging* (Bushong).

■ Ref. No. 419362

Date & Time: Wednesdays, January 11-May 2, 6-9:00 p.m.

Location: North Campus, Bldg. 41, Room 207

Faculty: Alison M. O'Donnell, AA, ARMRIT

REFRESHER NURSE UPDATE

COURSE NO: NSP 2781 (THEORY)

80 CONTACT HOURS/5 CREDITS

COURSE NO: NSP 2781L (CLINICAL)

160 CONTACT HOURS/5 CREDITS

This course has been developed to review current theory in relation to nursing practice so that the R.N., out of the medical surgical setting for more than 3 years, may be able to move with confidence into a staff nurse orientation and return to practice. The material presented will emphasize trends in nursing practice and nursing education today, changes in the fundamental nursing skills necessary for providing effective nursing care in a variety of situations and a reasonable comprehensive review of the up-to-date nursing management of the adult patient with a medical-surgical problem. New theory will be related to current clinical practice. Various experiences will be provided to expose the returning R.N. to patient care. **PRE-REQUISITES:** Active Florida R.N. License, current BLS Health Care Provider Certification and physical examination. (Security background check and drug screening at own expense) **TEXTBOOKS REQUIRED:** TBA. Call Continuing Education for specific list. You must register for both **THEORY** and **CLINICAL** courses.

THEORY (BLENDED) - Online computer activities will be incorporated into the theory content.

■ Ref. No. 419366

Date & Time: Thursdays, January 5-April 26, 5-10:00 p.m.

Location: A. Hugh Adams Central Campus, Davie, Bldg. 08, Room 206

Faculty: Wesley Jackson, RN, MSN, ARNP

REGISTRATION INFORMATION

Registration for credit courses may be completed at any Broward College campus location. There is a \$35.00 application fee for first-time students. The charge per credit hour for Florida residents is currently \$101.90 (out-of-state \$357.00). When necessary there will be a charge for liability insurance and/or lab fees.



Credit Courses



CONTINUED

REFRESHER NURSE UPDATE

COURSE NO: NSP 2781 (THEORY)

80 CONTACT HOURS/5 CREDITS

COURSE NO: NSP 2781L (CLINICAL)

160 CONTACT HOURS/5 CREDITS

CLINICAL (HOSPITAL) Everyone takes Campus Lab

■ Ref. No. 419368

Date & Time: Lab - Mondays, January 9-March 12, 6-9:00 p.m.

Hospital - Fridays, 7:00 a.m. - 7:00 p.m.

Location: A. Hugh Adams Central Campus, Davie, Bldg. 08, Room 223
and Hospital

Faculty: Carol Hockenberger, RN, ASN

VASCULAR SONOGRAPHY II

COURSE NO: SON 2175

48 CONTACT HOURS/3 CREDITS

Arterial anatomy below the neck and head, and it's hemodynamic functions, both normal and abnormal, are stressed, along with sonographic imaging techniques for arterial vascular structures, non-imaging testing modalities, and Doppler analysis of normal and abnormal flow patterns. Students must be registered with ARDMS, either RDMS or RDCS, if not, instructor's approval will be required to attend this class. **REQUIRED TEXTBOOKS:** *Diagnostic Ultrasound*, Saunders; *Introduction to Vascular Ultrasound*, William J. Zwiebel, M.D.

■ Ref. No. 419639

Date & Time: Tuesdays, January 10-May 1, 6-9:00 p.m.

Location: North Campus, Bldg. 41, Room 153

Faculty: Kirk Main, RD, MS, RDCS, RVT

PLEASE NOTE:

As of May 7, 2011, FBN has adopted the position of the American Nurses Credentialing Center (ANCC). No CEU's will be provided for Basic Life Support and renewals. No CEU's for Advanced Cardiac Life Support renewals. Students taking more than one certification course (ACLS, PALS, NRP) will be awarded only 16 CEU's each biennium.

Non-Credit Course Offerings

TERM 2 COURSE OFFERINGS

Broward College is committed to presenting high-quality offerings at a reasonable cost to meet the current and projected educational needs of the health care professional.

ADVANCED CARDIAC LIFE SUPPORT

COURSE NO: CAE 0309

16 CONTACT HRS.

FEE: \$244.10

PRE-REQUISITES: Basic Arrhythmia Analysis CAE 0518. "Health professionals whose daily occupation demands proficiency in the knowledge and skills of ACLS and who are authorized by state law to perform some or all of these functions" (ACLS procedure manual), current Florida BLS-Health Care Provider Course. The ACLS provider course is specifically designed to prepare paramedics, physicians, nurses and allied health specialists in recognition and intervention in the acute myocardial insult, for both adults and children. Curriculum centers around understanding of acute myocardial infarction, invasive monitoring techniques, resuscitation, airway management, cardiac dysrhythmias recognition, and treatment including appropriate pharmacological agents. Individuals successfully completing this course will be given an American Heart Association card. N.B. participants **MUST** successfully complete ALL ACLS course requirements to obtain Continuing Education Contact Hours. **REQUIRED TEXTBOOK:** The Textbook of ACLS (American Heart Association). N.B. - it is necessary for participants to purchase and read the textbook prior to class and be prepared for testing. **Note:** Registration for this class is by "Closed Class Card". Please call the Continuing Education office at 954-201-6768 for more information.

Faculty: Andy Popick, NREMT-P, AS, ACLS Program Coordinator

■ Ref. No. 418935

Date & Time: Tuesday & Wednesday, January 10 & 11, 7:30 a.m.-5:00 p.m.

Location: A. Hugh Adams Campus, Davie, Bldg. 08, Room 241

■ Ref. No. 418936

Date & Time: Tuesday & Wednesday, January 17 & 18, 7:30 a.m. - 5:00 p.m.

Location: A. Hugh Adams Campus, Davie, Bldg. 08, Room 212

■ Ref. No. 418938

Date & Time: Tuesday & Wednesday, February 14 & 15, 7:30 a.m. - 5:00 p.m.

Location: A. Hugh Adams Campus, Davie, Bldg. 08, Room 212

■ Ref. No. 418945

Date & Time: Tuesday & Wednesday, February 21 & 22, 7:30 a.m. - 5:00 p.m.

Location: A. Hugh Adams Campus, Davie, Bldg. 08, Room 212

■ Ref. No. 418946

Date & Time: Tuesday & Wednesday, March 13 & 14, 7:30 a.m. - 5:00 p.m.

Location: A. Hugh Adams Campus, Davie, Bldg. 08, Room 212

■ Ref. No. 418950

Date & Time: Tuesday & Wednesday, March 27 & 28, 7:30 a.m. - 5:00 p.m.

Location: A. Hugh Adams Campus, Davie, Bldg. 08, Room 212

■ Ref. No. 418956

Date & Time: Tuesday & Wednesday, April 3 & 4, 7:30 a.m. - 5:00 p.m.

Location: A. Hugh Adams Campus, Davie, Bldg. 08, Room 212

■ Ref. No. 418961

Date & Time: Tuesday & Wednesday, April 17 & 18, 7:30 a.m. - 5:00 p.m.

Location: A. Hugh Adams Campus, Davie, Bldg. 08, Room 212



Non-Credit Course Offerings



ADVANCED CARDIAC LIFE SUPPORT RECERTIFICATION

COURSE NO: CAE 0475

8 CONTACT HRS.

FEE: \$137.40

Course provides updated ACLS information for healthcare professionals who are in need of recertification. **PRE-REQUISITE:** Current ACLS card - please bring to class. **REQUIRED TEXTBOOK:** The Textbook of ACLS (American Heart Association).

Faculty: Andy Popick, NREMT-P, AS, ACLS Program Coordinator

■ Ref. No. 419108

Date & Time: Wednesday, January 4, 7:30 a.m. - 5:00 p.m.

Location: A. Hugh Adams Campus, Davie, Bldg. 08, Room 212

■ Ref. No. 419109

Date & Time: Wednesday, January 24, 7:30 a.m. - 5:00 p.m.

Location: A. Hugh Adams Campus, Davie, Bldg. 08, Room 212

■ Ref. No. 419110

Date & Time: Tuesday, February 8, 7:30 am - 5:00 p.m.

Location: A. Hugh Adams Campus, Davie, Bldg. 08, Room 212

■ Ref. No. 419111

Date & Time: Tuesday, February 28, 7:30 a.m. - 5:00 p.m.

Location: A. Hugh Adams Campus, Davie, Bldg. 08, Room 212

■ Ref. No. 419112

Date & Time: Tuesday, March 20, 7:30 a.m. - 5:00 p.m.

Location: A. Hugh Adams Campus, Davie, Bldg. 08, Room 212

■ Ref. No. 419113

Date & Time: Wednesday, March 21, 7:30 a.m. - 5:00 p.m.

Location: A. Hugh Adams Campus, Davie, Bldg. 08, Room 212

■ Ref. No. 419114

Date & Time: Tuesday, April 10, 7:30 a.m. - 5:00 p.m.

Location: A. Hugh Adams Campus, Davie, Bldg. 08, Room 212

■ Ref. No. 419115

Date & Time: Wednesday, April 25, 7:30 a.m. - 5:00 p.m.

Location: A. Hugh Adams Campus, Davie, Bldg. 08, Room 212

■ Ref. No. 419116

Date & Time: Wednesday, May 2, 7:30 a.m. - 5:00 p.m.

Location: A. Hugh Adams Campus, Davie, Bldg. 08, Room 212

REGISTER FOR HEALTH SCIENCES
CONTINUING EDUCATION
NON-CREDIT COURSES [ONLINE](http://www.broward.edu/cehealth)

www.broward.edu/cehealth

www.broward.edu/cehealth

Non-Credit Course Offerings

AIDS

COURSE NO: CAE 0216

4 CONTACT HRS.

FEE: \$ 42.90

This course will provide a comprehensive overview of AIDS and the impact of this disease on the health care worker. The participant will understand the legal, ethical and societal issues that surround the virus. The course will include treatment modalities for the associated opportunistic infections, infection control, procedure, prevention, and safer sex techniques in the available community resources.

■ Ref. No. 419411

Date & Time: Monday, February 6, 5-9:00 p.m.

Location: A. Hugh Adams Campus, Davie, Bldg. 08, Room 213

Faculty: Bobby Varghese, MSN, RN

■ Ref. No. 420412

Date & Time: Thursday, April 19, 5-9:00 p.m.

Location: A. Hugh Adams Campus, Davie, Bldg. 08, Room 213

Faculty: Bobby Varghese, MSN, RN

■ Ref. No. 422652

Date & Time: Monday, April 30, 5-9:00 p.m.

Location: A. Hugh Adams Campus, Davie, Bldg. 08, Room 213

Faculty: Bobby Varghese, RN, MSN

AIDS UPDATE REVIEW

COURSE NO: CAE 0316

2 CONTACT HRS.

FEE: \$ 26.45

Follow-up to "AIDS Update" course CAE 0216. Reviews the concept of AIDS and the impact of this disease on the health care worker. There will be a discussion of the legal, ethical and societal issues that surround the virus. Course focuses on updated information on modes of transmission, infection control procedures, clinical management, preventions, and Florida law on AIDS and its impact on testing and confidentiality. PRE-REQUISITE: AIDS Update (CAE 0216).

■ Ref. No. 419992

Date & Time: Thursday, March 15, 5:30-7:30 p.m.

Location: A. Hugh Adams Campus, Davie, Bldg. 08, Room 212

Faculty: Bobby Varghese, RN, MSN

■ Ref. No. 420005

Date & Time: Thursday, April 26, 5:30-7:30 p.m.

Location: A. Hugh Adams Campus, Davie, Bldg. 08, Room 212

Faculty: Bobby Varghese, RN, MSN

ALL HAZARDS PREPAREDNESS

COURSE NO: CAE 0597

2 CONTACT HRS.

FEE: \$ 19.95

This course presents information on bioterrorism and all hazards preparedness and response appropriate for a variety of health care professionals and health care workers. Participants will receive awareness information on natural and man-made disasters, recognition of emergency response, personal and work place emergency plans, and the requirements of special needs population.

■ Ref. No. 419392

Date & Time: Saturday, January 21, 12:30-2:30 p.m.

Location: A. Hugh Adams Campus, Davie, Bldg. 08, Room 213

Faculty: Debra Hauss, RN, BSN

■ Ref. No. 419991

Date & Time: Saturday, March 24, 12:30-2:30 p.m.

Location: A. Hugh Adams Campus, Davie, Bldg. 08, Room 216

Faculty: Debra Hauss, RN, BSN



CALL 954-201-7800
TO REGISTER FOR CLASSES

www.broward.edu/cehealth

Non-Credit Course Offerings



BASIC ARRHYTHMIA ANALYSIS: PART I (BASIC DYSRHYTHMIA COURSE)

COURSE NO: CAE 0518

32 CONTACT HRS.

FEE: \$281.80

Courses are delivered in either a face-to-face or blended (online) format. Classes are designed to enhance learning for licensed health care professionals using this non-traditional teaching format. Designed to provide the learner with skills necessary to analyze a specific number of basic ECG rhythms at a basic introductory level. It is vital for members of the health care professions caring for patients with abnormal heart rhythms to be able to recognize the common arrhythmias. The American Heart Association's ACLS guidelines are integrated throughout the course content. **REQUIRED TEXTBOOK:** Basic Arrhythmia (Huff).

BASED ON SPACE AVAILABILITY - CALL 954-201-6768

■ Ref. No. 420559

Date & Time: Wednesday, January 4-25, 8:00 a.m. - 4:30 p.m.

Location: A. Hugh Adams Central Campus, Bldg. 08, Room 203

Faculty: Bruce Hill, EMT-P

■ Ref. No. 420560

Date & Time: Thursday, Friday, Monday, Thursday, January 5-12, 8 a.m. - 4:30 p.m.

Location: A. Hugh Adams Central Campus, Bldg. 08, Room 202

Faculty: Mark Siegel, EMT-P

■ Ref. No. 420561

Date & Time: Friday, Tuesday, Wednesday, Friday, January 13-20, 8 a.m. - 4:30 p.m.

Location: A. Hugh Adams Central Campus, Bldg. 08, Room 202

Faculty: Mark Siegel, EMT-P

■ Ref. No. 420562

Date & Time: Monday and Thursday, February 6-16, 8 a.m. - 4:30 p.m.

Location: A. Hugh Adams Central Campus, Bldg. 08, Room 203

Faculty: Mark Siegel, EMT-P

■ Ref. No. 420563

Date & Time: Wednesday, February 8-29, 8 a.m. - 4:30 p.m.

Location: A. Hugh Adams Central Campus, Bldg. 08, Room 203

Faculty: Mark Siegel, EMT-P

■ Ref. No. 420564

Date & Time: Tuesday and Thursday, February 21-March 1, 8 a.m. - 4:30 p.m.

Location: A. Hugh Adams Central Campus, Bldg. 08, Room 203

Faculty: Mark Siegel, EMT-P

■ Ref. No. 420565

Date & Time: Wednesday, March 14-April 4, 8 a.m. - 4:30 p.m.

Location: A. Hugh Adams Central Campus, Bldg. 08, Room 203

Faculty: Mark Siegel, EMT-P

■ Ref. No. 420854

Date & Time: Monday and Thursday, March 19-29, 8 a.m. - 4:30 p.m.

Location: A. Hugh Adams Central Campus, Bldg. 08, Room 203

Faculty: Mark Siegel, EMT-P

■ Ref. No. 420855

Date & Time: Wednesday, April 11-May 2, 8 a.m. - 4:30 p.m.

Location: A. Hugh Adams Central Campus, Bldg. 08, Room 203

Faculty: Mark Siegel, EMT-P

REGISTER FOR HEALTH SCIENCES
CONTINUING EDUCATION
NON-CREDIT COURSES ONLINE

www.broward.edu/cehealth

www.broward.edu/cehealth

Non-Credit Course Offerings

BASIC LIFE SUPPORT - CPR RENEWAL

COURSE NO: CAE 0506

4 CONTACT HRS.

FEE: \$ 62.90

Review of the background and material, new materials, and new methods, including supervised manikin practice for the health care provider course. Students should be prepared to take both the written and manikin performance tests outlined in the course completion criteria for Health Care Provider course. **NOTE:** Students must have an unexpired CPR card ready to be renewed - please bring card to class.

Faculty: Mark Siegel, AA, REMPT-P, BLS Program Coordinator

■ Ref. No. 418410

Date & Time: Wednesday, January 11, 5:30 - 9:30 p.m.

Location: A. Hugh Adams Campus, Davie, Bldg. 08, Room 223

■ Ref. No. 418421

Date & Time: Friday, January 20, 5:30 - 9:30 p.m.

Location: A. Hugh Adams Campus, Davie, Bldg. 08, Room 223

■ Ref. No. 418423

Date & Time: Wednesday, February 8, 5:30 - 9:30 p.m.

Location: A. Hugh Adams Campus, Davie, Bldg. 08, Room 223

■ Ref. No. 418424

Date & Time: Sunday, February 19, 8 a.m. - 12 noon

Location: A. Hugh Adams Campus, Davie, Bldg. 08, Room 223

■ Ref. No. 418427

Date & Time: Thursday, March 1, 5:30 - 9:30 p.m.

Location: A. Hugh Adams Campus, Davie, Bldg. 08, Room 223

■ Ref. No. 418428

Date & Time: Monday, March 19, 5:30 - 9:30 p.m.

Location: A. Hugh Adams Campus, Davie, Bldg. 08, Room 223

■ Ref. No. 418429

Date & Time: Saturday, April 14, 8 a.m. - 12 noon

Location: A. Hugh Adams Campus, Davie, Bldg. 08, Room 223

■ Ref. No. 418430

Date & Time: Monday, April 30, 5:30-9:30 p.m.

Location: A. Hugh Adams Campus, Davie, Bldg. 08, Room 223



PLEASE NOTE:

As of May 7, 2011, FBN has adopted the position of the American Nurses Credentialing Center (ANCC). No CEU's will be provided for Basic Life Support and renewals. No CEU's for Advanced Cardiac Life Support renewals. Students taking more than one certification course (ACLS, PALS, NRP) will be awarded only 16 CEU's each biennium.

IT IS MANDATORY FOR EVERY STUDENT TO PURCHASE THEIR OWN COPY OF THE LATEST EDITION BLS TEXTBOOK AT THE BROWARD COLLEGE CENTRAL BOOKSTORE AND BRING THE BOOK TO CLASS. STUDENTS WITHOUT THE BOOK OR WHO COME LATE TO CLASS WILL BE ASKED TO LEAVE CLASS AND WILL NEED TO RE-REGISTER AND PAY TO TAKE ANOTHER CLASS AT A LATER DATE. ALL STUDENTS ARE REQUIRED TO BUY A 1-WAY VALVE WHICH IS AVAILABLE AT THE BROWARD COLLEGE CENTRAL CAMPUS BOOKSTORE. CHECK BOOKSTORE HOURS.

Non-Credit Course Offerings



BASIC LIFE SUPPORT - HEALTH PROVIDER

COURSE NO: CAE 0062

8 CONTACT HRS.

FEE: \$ 100.80

Basic Rescuer training is intended to provide the student with information about prudent heart living, prevention of unnecessary death from a heart attack, signals and actions for survival as well as mastery of the skills involved in CPR - 1 & 2 person, obstructed airway and infant CPR. The student should be prepared to take and pass both written and manikin performance tests. N.B. - Continuing Education Contact Hours will be given ONLY upon successful completion of ALL course requirements. This course is acceptable for training and re-training for Healthcare Provider levels by the American Heart Association.

This is true both in practicing on the manikin and doing CPR for a cardiac arrest victim. If you have a medical or coronary history that may be aggravated by this course, you should consult your physician and ask his advice as to whether you should participate in a CPR course. If you have reservations about being able to perform CPR on a cardiac victim, you should consider this before beginning this course. If you have recently had any type of infectious disease, including upper respiratory infection or open sores on your mouth or hands, IT IS IMPERATIVE to defer this course until you are well. NOTE: It is required that every student purchase their own 1-way valve (available at Central Campus Bookstore).

■ Ref. No. 418400

Date & Time: Sunday, January 22, 8 a.m. - 5:00 p.m.

Location: A. Hugh Adams Campus, Davie, Bldg. 08, Room 223

■ Ref. No. 418401

Date & Time: Wednesday/Friday, February 29 & March 2, 5:30-9:30 pm

Location: A. Hugh Adams Campus, Davie, Bldg. 08, Room 223

■ Ref. No. 418402

Date & Time: Saturday, March 17, 8 a.m. - 5:00 p.m.

Location: A. Hugh Adams Campus, Davie, Bldg. 08, Room 223

■ Ref. No. 418403

Date & Time: Monday/Thursday, April 23 & 26, 5:30 - 9:30 p.m.

Location: A. Hugh Adams Campus, Davie, Bldg. 08, Room 223

FEES BEING CHARGED FOR THIS COURSE DOES NOT IN ANY WAY CONSTITUTE REVENUE TO THE BROWARD CHAPTER OF THE AMERICAN HEART ASSOCIATION

IT IS MANDATORY FOR EVERY STUDENT TO PURCHASE THEIR OWN COPY OF THE LATEST EDITION BLS TEXTBOOK AT THE BROWARD COLLEGE CENTRAL BOOKSTORE AND BRING THE BOOK TO CLASS. STUDENTS WITHOUT THE BOOK OR WHO COME LATE TO CLASS WILL BE ASKED TO LEAVE CLASS AND WILL NEED TO RE-REGISTER AND PAY TO TAKE ANOTHER CLASS AT A LATER DATE. ALL STUDENTS ARE REQUIRED TO BUY A 1-WAY VALVE WHICH IS AVAILABLE AT THE BROWARD COLLEGE CENTRAL CAMPUS BOOKSTORE. CHECK BOOKSTORE HOURS.

Limited enrollment. IMPORTANT: The course for which you are enrolled may include physical strain, possibility of cross-infection, and emotional stress. If your physician has recommended that you avoid strenuous activity or limit your activity in any way, you need to realize that CPR is hard work!

REGISTER FOR HEALTH SCIENCES
CONTINUING EDUCATION
NON-CREDIT COURSES [ONLINE](http://www.broward.edu/cehealth)

www.broward.edu/cehealth

www.broward.edu/cehealth

Non-Credit Course Offerings

COMPUTERIZED TOMOGRAPHY IMAGING

APPLICATIONS: THEORY

COURSE NO: CAE 0541

48 CONTACT HRS.

FEE: \$386.40

First in a series of courses to prepare students with the knowledge and skills in Computed Tomography. Students will be eligible for the ARRT Computed Tomography examination upon completion of this course.

■ Ref. No. 419364

Date & Time: Wednesday, January 11-May 2, 6-9:00 p.m.

Location: South Campus, Bldg. 69, Room 253

Faculty: Augustine Thomas, RT(R), CT, MR, BS

CRITICAL CARE ESSENTIALS (AACN)

COURSE NO: CAE 0601

124 CONTACT HRS.

FEE: \$1,033.89

Taught in the classroom-Web CT and traditional face-to-face, the class is designed to enhance learning for licensed health care professionals using this non-traditional teaching format. Essentials of Critical Care Orientation (ECCO) provides the basic didactic content of a critical care training course in a self-paced, interactive, just-in-time format. Combining the flexibility of ECCO with traditional educational activities such as clinical preceptorships, discussion groups, or reading assignments is referred to as blended learning. Blended learning provides the opportunity for flexibility and creativity in designing a unique training experience for nurses new to critical care. PRE-REQUISITES: Florida RN License, Basic Arrhythmia and BLS Health Care courses. CO-REQUISITE: 1 year PCU/Med-Surg (preferred). NOTE: 58 hours of this course are conducted ONLINE. Student must have access to computer and have Internet access. Call 954-201-6905 for registration information. **BASED ON SPACE AVAILABILITY.**

NOTE: STUDENT MUST TAKE WITH NURSING SIMULATION LAB

■ Ref. No. 426887

Date & Time: Monday-Friday, January 30-February 27, 8:00 a.m. - 4:30 p.m.

Location: A. Hugh Adams Campus, Davie, Bldg. 08, Room 202

Faculty: Evy Warmbier, RN, MSN

■ Ref. No. 419643

Date & Time: Monday-Friday, April 16-May 11, 8:00 a.m. - 4:30 p.m.

Location: A. Hugh Adams Campus, Davie, Bldg. 08, Room 202

Faculty: Evy Warmbier, RN, MSN

DOMESTIC VIOLENCE

COURSE NO: CAE 0441

2 CONTACT HRS.

FEE: \$ 26.45

Course meets the requirements established by the Board of Nursing and other healthcare licensing agencies that require continuing education on domestic violence.

■ Ref. No. 419409

Date & Time: Wednesday, February 1, 6-8:00 p.m.

Location: A. Hugh Adams Campus, Davie, Bldg. 08, Room 213

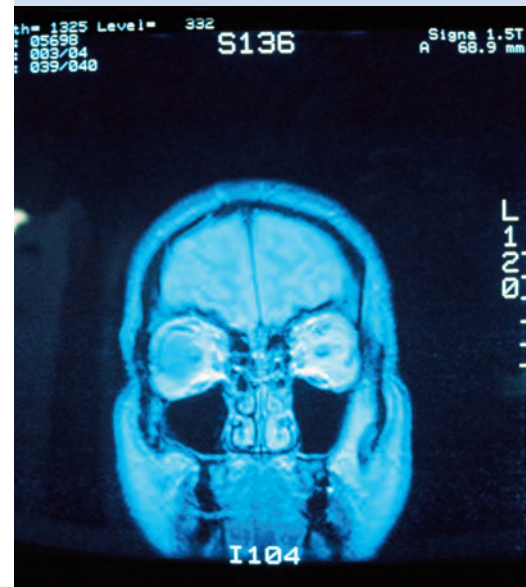
Faculty: Lisa Bernstein, MEd, BS

■ Ref. No. 420004

Date & Time: Thursday, April 5, 6-8:00 p.m.

Location: A. Hugh Adams Campus, Davie, Bldg. 08, Room 213

Faculty: Lisa Bernstein, MEd, BS



REGISTER FOR HEALTH SCIENCES
CONTINUING EDUCATION
NON-CREDIT COURSES ONLINE

Non-Credit Course Offerings



12 LEAD EKG INTERPRETATION - INTRODUCTION

COURSE NO: CAE 0066

16 CONTACT HRS.

FEE: \$151.20

Basic introduction to 12 Lead EKG interpretation. Participant will receive instruction in A&P of the heart and its electrical conduction system. The surfaces of the heart viewed by each of the 12 leads will be identified. EKG wave form changes associated with ischemia, injury and infarction will be discussed. Bundle branch block patterns used for identification on the 12 lead EKG will be described. **REQUIRED TEXTBOOK:** Color Coded EKG's (Carrick).

BASED ON SPACE AVAILABILITY - CALL 954-201-6768

■ Ref. No. 420581

Date & Time: Wednesday, February 1 & 8, 8:00 a.m. - 4:30 p.m.

Location: A. Hugh Adams Central Campus, Bldg. 8, Room 241

Faculty: Terry Ray, RN, MSN

EMERGENCY NURSING

COURSE NO: CAE 0556

95 CONTACT HRS.

FEE: \$712.71

The Emergency nursing course for the community provides the basic didactic content in self-paced, interactive, just-in-time format. The course combines the flexibility of components of ECCO (Essentials of Critical Care Orientation) with traditional educational activities, such as discussion groups, reading assignments and student presentations. This provides the opportunity for flexibility and creativity in designing a unique training experience for nurses new to the emergency department. Pre-requisites: Active Florida RN license, Basic Arrhythmia and BLS Healthcare Provider course. Call 954-201-6905 for registration information. **MUST TAKE WITH NURSING SIMULATION LAB.**

■ Ref. No. 420579

Date & Time: Tuesday, Wednesday, Thursday & Friday, March 13-April 3,
8:00 a.m. - 4:30 p.m.

Location: A. Hugh Adams Central Campus, Bldg. 8, Room 202

Faculty: Debra Hauss, RN, BSN, CEN

EMERGING INFECTIOUS DISEASES

COURSE NO: CAE 0479

3 CONTACT HRS.

FEE: \$ 30.02

Discussion on emerging infectious diseases, examines forces contributing to their spread, and strategies to reduce their threat to humanity. Provides a brief update on the AIDS epidemic.

■ Ref. No. 419395

Date & Time: Saturday, January 28, 1-4:00 p.m.

Location: A. Hugh Adams Campus, Davie, Bldg. 08, Room 216

Faculty: Nancy Zanotti, BSN, MPH, CIC

Non-Credit Course Offerings

INFECTIOUS DISEASE: SEXUALLY TRANSMITTED DISEASES - A POTENTIALLY DEADLY HEALTH PROBLEM

COURSE NO: CAE 0406

2 CONTACT HRS.

FEE: \$ 22.55

Sexually transmitted diseases have been present throughout history and continue to pose a major health threat today. This course reviews the history of STD's, examines different disease processes and risk factors for transmission. Trends in transmission and recommendations for prevention will be discussed.

■ Ref. No. 419407

Date & Time: Saturday, February 25, 10 a.m. - 12 noon

Location: A. Hugh Adams Campus, Davie, Bldg. 08, Room 216

Faculty: Nancy Zanotti, BSN, MPH, CIC

INFECTIOUS DISEASE: ANTIBIOTIC ASSOCIATED DIARRHEA

COURSE NO: CAE 0406

2 CONTACT HRS.

FEE: \$ 22.55

This course is designed to increase the healthcare worker's awareness to problems associated with C. difficile. There has been an increase in the number of patients who develop C. difficile as well as the number who develop serious complications. This course enables the healthcare provider to identify those at risk for acquiring C. difficile organism and to practice appropriate contact precautions to prevent further transmission.

■ Ref. No. 419408

Date & Time: Saturday, February 25, 12-2:00 p.m.

Location: A. Hugh Adams Campus, Davie, Bldg. 08, Room 216

Faculty: Nancy Zanotti, RN, BSN, MPH, CIC

INTRODUCTION TO SHIATSU MASSAGE

COURSE NO: CAE 0630

8 CONTACT HRS.

FEE: \$ 64.80

Beginners class created for massage therapists who want to explore traditional Japanese shiatsu massage and determine their comfort level applying shiatsu massage on the floor. This class will introduce oriental medical principles that guide shiatsu massage. Basic shiatsu strokes will be learned and meridian flows will be explored through partner stretching. This class is taught on the floor and therapists will receive instruction in warm-up stretches to prevent injury. Students are required to bring blankets, egg crate or a mat to equal 3 inches in thickness, 3 flat pillows (flat chair cushion style), 1 sheet and 1 blanket. Please call 954-201-6768 for more information.

■ Ref. No. 425379

Date & Time: Saturday, March 3, 8:00 a.m. - 5:00 p.m.

Location: A. Hugh Adams Central Campus, Bldg. 08, 223

Faculty: TBA

■ Ref. No. 425498

Date & Time: Saturday, April 28, 8:00 a.m. - 5:00 p.m.

Location: A. Hugh Adams Central Campus, Bldg. 08, 223

Faculty: TBA



REGISTER FOR HEALTH SCIENCES
CONTINUING EDUCATION
NON-CREDIT COURSES ONLINE

Non-Credit Course Offerings



REGISTER FOR HEALTH SCIENCES
CONTINUING EDUCATION
NON-CREDIT COURSES [ONLINE](#)

PLEASE NOTE:

As of May 7, 2011, FBN has adopted the position of the American Nurses Credentialing Center (ANCC). No CEU's will be provided for Basic Life Support and renewals. No CEU's for Advanced Cardiac Life Support renewals. Students taking more than one certification course (ACLS, PALS, NRP) will be awarded only 16 CEU's each biennium.

NEUROLOGICAL TOPICS: PARKINSON'S, MEMORY DISORDER AND DEMENTIA

COURSE NO: CAE 0504

2 CONTACT HRS.

FEE: 22.55

Introduces students to the disease management of Parkinson's disease, memory disorder and dementia. At the end of the course, students will be familiar with the signs and symptoms, differential diagnosis, treatment, medications, as well as rehabilitation modalities and caregivers' roles in patients with Parkinson's.

■ Ref. No. 419410

Date & Time: Tuesday, February 21, 7-9:00 p.m.

Location: A. Hugh Adams Campus, Davie, Bldg. 08, Room 212

Faculty: Carol Eickhorn, RN, MSN, ARNP, CNOR

NEUROLOGICAL TOPICS: STROKE UPDATE

COURSE NO: CAE 0504

2 CONTACT HRS.

FEE: \$ 22.55

Students are introduced to the neurological assessment based on the (NIHSS) National Institute of Health Stroke Scale, and become familiar with the signs and symptoms, types of strokes, treatment, timeline, medications, surgery, as well as rehabilitation modalities to treat stroke patients.

■ Ref. No. 419993

Date & Time: Tuesday, March 20, 7-9:00 p.m.

Location: A. Hugh Adams Central Campus, Bldg. 8, Room 212

Faculty: Carol Eickhorn, RN, MSN, ARNP, CNOR

NURSING SIMULATION LAB

COURSE NO: CAE 0587

25 CONTACT HRS.

FEE: \$ 283.22

Course is conducted in a simulation lab where the nurse can begin to demonstrate assessment skills and patient management on a human patient simulator. Students will be required to demonstrate that they can evaluate signs and symptoms, intervene and evaluate if the selected treatment has been effective. Taught in conjunction with the critical care or emergency nursing courses. Call 954-201-6905 for registration information.

■ Ref. No. 420540 (Critical Care)

Date & Time: Mon/Tues/Wed/Thurs/Fri., January 30-February 27, 8:00 a.m.-4:30 p.m.

Location: A. Hugh Adams Campus, Davie, Bldg. 08, Room 204

Faculty: Evy Warmbier, RN, MSN

■ Ref. No. 420580 (Emergency Nursing)

Date & Time: Mon/Thurs/Fri., March 13-April 3, 8:00 a.m.-4:30 p.m.

Location: A. Hugh Adams Campus, Davie, Bldg. 08, Room 204

Faculty: Debra Hauss, RN, BSN

■ Ref. No. 424321 (Critical Care)

Date & Time: Monday-Friday, April 16-May 11, 8:00 a.m.-4:30 p.m.

Location: A. Hugh Adams Campus, Davie, Bldg. 08, Room 204

Faculty: Evy Warmbier, RN, MSN

Non-Credit Course Offerings

OSHA UPDATE: BLOODBORNE PATHOGENS & TUBERCULOSIS

COURSE NO: CAE 0455

3 CONTACT HRS.

FEE: \$ 34.67

Program is designed to provide the required OSHA training for health care providers regarding the bloodborne pathogens and tuberculosis. Health care providers will learn the modes of transmission and the prevention measures that are necessary to protect themselves from transmission of the bloodborne pathogens and tuberculosis.

■ Ref. No. 419394

Date & Time: Saturday, January 28, 9 a.m. - 12 noon

Location: A. Hugh Adams Campus, Davie, Bldg. 08, Room 216

Faculty: Cathy Soumarai, RN, BSN, CIC

PEDIATRIC ADVANCED LIFE SUPPORT PROVIDER

COURSE NO: CAE 0595

16 CONTACT HRS.

FEE: \$ 244.10

PALS is an AHA advanced life support course that provides an integrated approach to learning. The course includes advanced didactics and skill stations related to pre/post cardiac and pulmonary emergencies in infants and children. The intent of the course is to reduce disability and death from cardiac and respiratory emergencies in children and improve the chain of survival in every community.

■ Ref. No. 428091

Date & Time: Thurs/Friday, January 19 & 20, 9:00 a.m. - 5:30 p.m.

Location: A. Hugh Adams Central Campus, Bldg. 8, Room 203

Faculty: Maricar Cabral, RN, BSN

■ Ref. No. 420892

Date & Time: Thurs/Friday, March 1 & 2, 9:00 a.m. - 5:30 p.m.

Location: A. Hugh Adams Central Campus, Bldg. 8, Room 241

Faculty: Maricar Cabral, RN, BSN

■ Ref. No. 420893

Date & Time: Thurs/Friday, April 26 & 27, 9:00 a.m. - 5:30 p.m.

Location: A. Hugh Adams Central Campus, Bldg. 8, Room 203

Faculty: Maricar Cabral, RN, BSN

PEDIATRIC ADVANCED LIFE SUPPORT RETRAINING

COURSE NO: CAE 0596

8 CONTACT HRS.

FEE: \$ 137.40

PALS Retraining includes a review of advanced didactics and skill stations related to pre/post cardiac and pulmonary emergencies in infants and children. **Pre-requisite:** current PALS provider card. Must bring to class.

■ Ref. No. 424315

Date & Time: Wednesday, February 29, 9:00 a.m. - 5:30 p.m.

Location: A. Hugh Adams Central Campus, Bldg. 8, Room 241

Faculty: Maricar Cabral, RN, BSN

■ Ref. No. 424316

Date & Time: Thursday, April 5, 9:00 a.m. - 5:30 p.m.

Location: A. Hugh Adams Central Campus, Bldg. 8, Room 241

Faculty: Maricar Cabral, RN, BSN



REGISTER FOR HEALTH SCIENCES
CONTINUING EDUCATION
NON-CREDIT COURSES [ONLINE](#)

Non-Credit Course Offerings



PET - POSITRON EMISSION TOMOGRAPHY)

COURSE NO: CAE 0559

48 CONTACT HRS.

FEE: \$ 386.40

This course educates the student upon the fundamentals of how two separated imaging modalities, PET and CT are being emerged together to form a very useful diagnostic tool in itself. The student will be educated on proper radiation safety techniques, PET radiopharmaceuticals commonly used, basic understanding of PET camera instrumentations and a general knowledge of routine procedures performed in PET facilities. This course is open to anyone who would like to gain a basic comprehension of PET/CT.

■ Ref. No. 425012

Date & Time: Saturday, January 7-April 28, 9 a.m.-12 noon

Location: North Campus, Bldg. 41, Room 152

Faculty: TBA

PREVENTION OF MEDICAL ERRORS

COURSE NO: CAE 0528

2 CONTACT HRS.

FEE: \$ 26.45

Designed to increase the health care worker's awareness of medical errors, their causes, error-prone situations, and concern for populations at risk. Addresses consumer education regarding things they can do to decrease the chance of an error. Meets the mandate of the Florida Legislature, (Florida Statute 456.013), requiring training on prevention of medical errors and follows the curriculum guidelines for issuance of 2 contact hours needed for license renewal.

■ Ref. No. 419390

Date & Time: Thursday, January 12, 6-8:00 p.m.

Location: A. Hugh Adams Campus, Davie, Bldg. 08, Room 213

Faculty: Debra Hauss, RN, BSN

■ Ref. No. 419391

Date & Time: Saturday, January 21, 10 a.m.-12 noon

Location: A. Hugh Adams Campus, Davie, Bldg. 08, Room 216

Faculty: Debra Hauss, RN, BSN

■ Ref. No. 419405

Date & Time: Wednesday, February 8, 6-8:00 p.m.

Location: A. Hugh Adams Campus, Davie, Bldg. 08, Room 213

Faculty: Debra Hauss, RN, BSN

■ Ref. No. 419406

Date & Time: Thursday, February 16, 6-8:00 p.m.

Location: A. Hugh Adams Campus, Davie, Bldg. 08, Room 212

Faculty: Debra Hauss, RN, BSN

■ Ref. No. 419986

Date & Time: Thursday, March 15, 6-8:00 p.m.

Location: A. Hugh Adams Campus, Davie, Bldg. 08, Room 213

Faculty: Debra Hauss, RN, BSN

■ Ref. No. 419990

Date & Time: Saturday, March 24, 10 a.m.-12 noon

Location: A. Hugh Adams Campus, Davie, Bldg. 08, Room 213

Faculty: Debra Hauss, RN, BSN

■ Ref. No. 419998

Date & Time: Tuesday, April 10, 6-8:00 p.m.

Location: A. Hugh Adams Campus, Davie, Bldg. 08, Room 213

Faculty: Debra Hauss, RN, BSN

(continued next page)

Non-Credit Course Offerings

CONTINUED

PREVENTION OF MEDICAL ERRORS

COURSE NO: CAE 0528

2 CONTACT HRS.

FEE: \$ 26.45

■ Ref. No. 420001

Date & Time: Thursday, April 19, 6-8:00 p.m.

Location: A. Hugh Adams Campus, Davie, Bldg. 08, Room 213

Faculty: Debra Hauss, RN, BSN

■ Ref. No. 420007

Date & Time: Tuesday, May 1, 6-8:00 a.m.

Location: A. Hugh Adams Campus, Davie, Bldg. 08, Room 213

Faculty: Debra Hauss, RN, BSN

TRAUMA NURSING CORE CS: TNCC

COURSE NO: CAE 0628

14.5 CONTACT HRS.

FEE: \$325.25

This course is for nurses to enhance their emergency nursing knowledge in the care of trauma patients in an Emergency Nursing Association developed curriculum, which follows the trauma nursing process and incorporates the latest evidence based medical knowledge and technical advances. For registration information please call 954-201-6905.

■ Ref. No. 411826

Date & Time: Monday & Tuesday, February 20 & 21, 8:00 a.m. - 4:30 p.m.

Location: A. Hugh Adams Campus, Davie, Bldg. 08, Room 203

Faculty: Debra Hauss, RN, BSN

■ Ref. No. 422334

Date & Time: Thursday & Friday, April 12 & 13, 8:00 a.m. - 4:30 p.m.

Location: A. Hugh Adams Campus, Davie, Bldg. 08, Room 202

Faculty: Debra Hauss, RN, BSN



Faculty Biographies



MARIANNE ALTSCHUL, BSMT, ASCP, received her medical technology degree from the University of Miami. She trained and worked at Mount Sinai and has taught at Coulter Electronics. Maryanne currently teaches phlebotomy for Broward College and Memorial Regional Hospital Systems.

LISA BERNSTEIN, BS, MEd, received her Master of Science in Education degree from the University of Miami and her Bachelor of Science in Health Education degree from University of Maryland. Lisa is a wellness instructor at Broward College and has taught Domestic Violence for the Department of Continuing Education for Health Sciences for the past 15 years.

CAROL EICKHORN, RN, MSN, ARNP, CNOR, was at North Ridge Medical Center for 25 years, starting in medical surgical nursing, and then progressed to perioperative nursing, became a Nurse Practitioner while still at North Ridge, and coordinated Women's Continence Center, a Parkinson Center and a Stroke Center. North Ridge closed in 2007 and was purchased by Holy Cross Hospital. Carol was previously active in the Association of Operating Room Nurses (AORN) and served on the Board and Nominating Committee as well as delegate for the AORN Congress for five consecutive years and presently a member of the American Academy of Nurse Practitioners (AANP). She earned her Associates degree at Broward College, her BSN, MSN, ARNP at Florida International University and graduated with honors. At the present time, Carol sees patients with Parkinson disease, hosts support groups, and is an adjunct professor for Broward College Continuing Education program.

DEBRA HAUSS, RN, BSN, is the Workforce Development Clinician for Broward College and the Memorial Healthcare Systems, coordinating the Emergency Nurse and Trauma Nursing Core CS programs. In her previous position at Broward College, she coordinated a three year grant in Emergency Preparedness and Response for health care professionals in partnership with Nova Southeastern University Center for Bioterrorism and All Hazards Preparedness. Debra is the Administrative Officer and a Supervisory Clinical Nurse on the South Florida Regional Disaster Medical Assistance Team, participating since 1997. She was a recipient of the Irene Fischley Award for excellence as a BCC nursing student in 1994, and has worked in the Telemetry and Emergency Department for Broward Health. Debra received her BSN from Florida International University.

KATHLEEN J. KING, ARNP, MSN, CCRN, is Director of Nurse Specialty programs at Broward College. She has been a Clinical Nurse Specialist in Cardiovascular and Critical Care subspecialties for over 25 years, and is a graduate of the MSN program from Texas Woman's University, Dallas. Kathy has been actively teaching entry level Critical Care Courses in the South Florida area since 1981. Kathy's career advancement into E-health and knowledge of the Internet bring additional contributions to the development of E-education for health care professionals.

ANDREW H. POPICK, NREMT-P, AS, has been an EMS instructor at Broward College since May 1989. He currently teaches at the University of Miami School of Medicine's Medical Training and Simulation Lab, and in Broward and Dade counties for many of the hospitals. He holds instructors certifications in Advanced Cardiac Life Support, Pediatric Advanced Life Support, Prehospital Trauma Life Support, Basic Trauma Life Support, and Cardiopulmonary resuscitation. Currently Andrew is the Battalion Chief for the City of Davie Fire Rescue Department. In addition to being a state certified paramedic, Mr. Popick is a Fire Service Instructor III, Live Fire Training Instructor I, and a Fire Officer I. He is also on the national registry of Emergency Medical Technicians as well as Hazardous Materials Technician I and Dive Rescue I. He graduated from Barry University in Miami with a Bachelors in Public Administration, and was the recipient of the Irene Fischley Scholarship Award for academic excellence as a student at Broward College. He completed the A.S. in Fire Science at the college.

Faculty Biographies

TERRY RAY, RN, MN, FAACVPR, has over 30 years experience as a cardiovascular clinical nurse specialist in critical care, staff development and training, program administration, clinical research; cardiac and pulmonary rehabilitation and preventive medicine.

JUNE B. SMALL, MS, RD, is presently Clinical Nutrition Manager at Cedars Medical Center in Miami. She has experience as clinical assistant and a therapeutic dietitian. June currently serves on the Advisory Committee for Continuing Education for Health Related Professions at Broward College.

NORMA SUE GORDON VESEY, RN, BSN, MS, PCCN, is the Stroke Program Coordinator responsible for the day to day operation of the Stroke Program in a Primary Stroke Center at Broward General Medical Center. She is a clinical nurse specialist on the Medical/Surgical Telemetry Unit, a Radiology nurse as well as a legal nurse consultant. Ms Vesey received her Master of Science degree in exercise science and health promotions. She received the ASN degree from Broward College, and BSN degree from Florida Atlantic University from Boca Raton, Florida.

NANCY ZANOTTI, RN, BSN, MPH, CIC, is an Infection Prevention Practitioner at Westside Regional Medical Center. She has a Bachelor's degree in Nursing and a Master's degree in Public Health. She is certified in infection control. Nancy is on the Advisory Committee for Continuing Education/Workforce Development for Health Sciences at Broward College. She is also a member of the Association of Professionals in Infection Control and Epidemiology and has served in several positions within the Broward/Palm Beach Chapter as well as on several national committees. Nancy is also a Board member of FPIC (Florida Practitioners in Infection Control).



Registration Information

CALL 954-201-7800

FEE INFORMATION

The Florida State Legislation mandates that those students who have NOT been a resident in the State of Florida for one (1) year may have to pay out-of-state fees for credit courses.

Advance registration is preferred 10 days prior to all continuing education activities. Registration may be mailed to Broward College with your check UP TO 2 WEEKS PRIOR TO THE OFFERING. Registration after that time must be completed at any campus registration office in person. Priority will be given to early registrants. Early registration is encouraged to insure a place in the class.

REGISTRATION FEES

Fees may vary according to the type of offering (unless indicated, meals and breaks are not included). Registration fees are payable at the time of registration. Fees may be paid by check to Broward College. **INCLUDE YOUR NAME, ADDRESS, TELEPHONE NUMBER AND SOCIAL SECURITY NUMBER ON THE CHECK.**

REGISTER ONLINE

Register online at www.broward.edu/cehealth

REFUND POLICY

WITHDRAWALS: A student may withdraw in person from a course or request a petition for refund by phone from registration up until the day **PRECEDING** the offering. **NO REFUND** will be made after this deadline.

CANCELLED CLASSES: Broward College reserves the right to cancel any course which does not meet student quota requirements. If insufficient enrollment requires cancelling of an offering, tuition fees will be fully refunded. In the event of weather emergencies, energy emergencies or other corresponding emergencies, every effort will be made to re-schedule the offering.

CHANGES IN ROOM ASSIGNMENTS

Changes in room assignments as well as those marked "TBA" will be posted at the class location. If a class is cancelled for any reason, every effort is made to call students. Change of address and/or incorrect phone numbers make it impossible to reach some individuals. **REMEMBER** to register at a campus 10 to 14 days prior to class.

THREE-WAY TO REGISTER

- **ONLINE** at www.broward.edu/cehealth
Follow the directions for Application, Registration and Payment.
- **IN PERSON** at the Registrar's office on A. Hugh Adams Central Campus, North Campus, Judson A. Samuels South Campus, Willis Holcombe Center (downtown) or Pines Center.
- **BY MAIL** - complete the Non-Credit Course Registration/ Application form in the back of this flyer and mail to the address noted on the form.

Campus Maps

A. HUGH ADAMS CENTRAL CAMPUS

3501 S.W. DAVIE ROAD, DAVIE, FLORIDA 33314

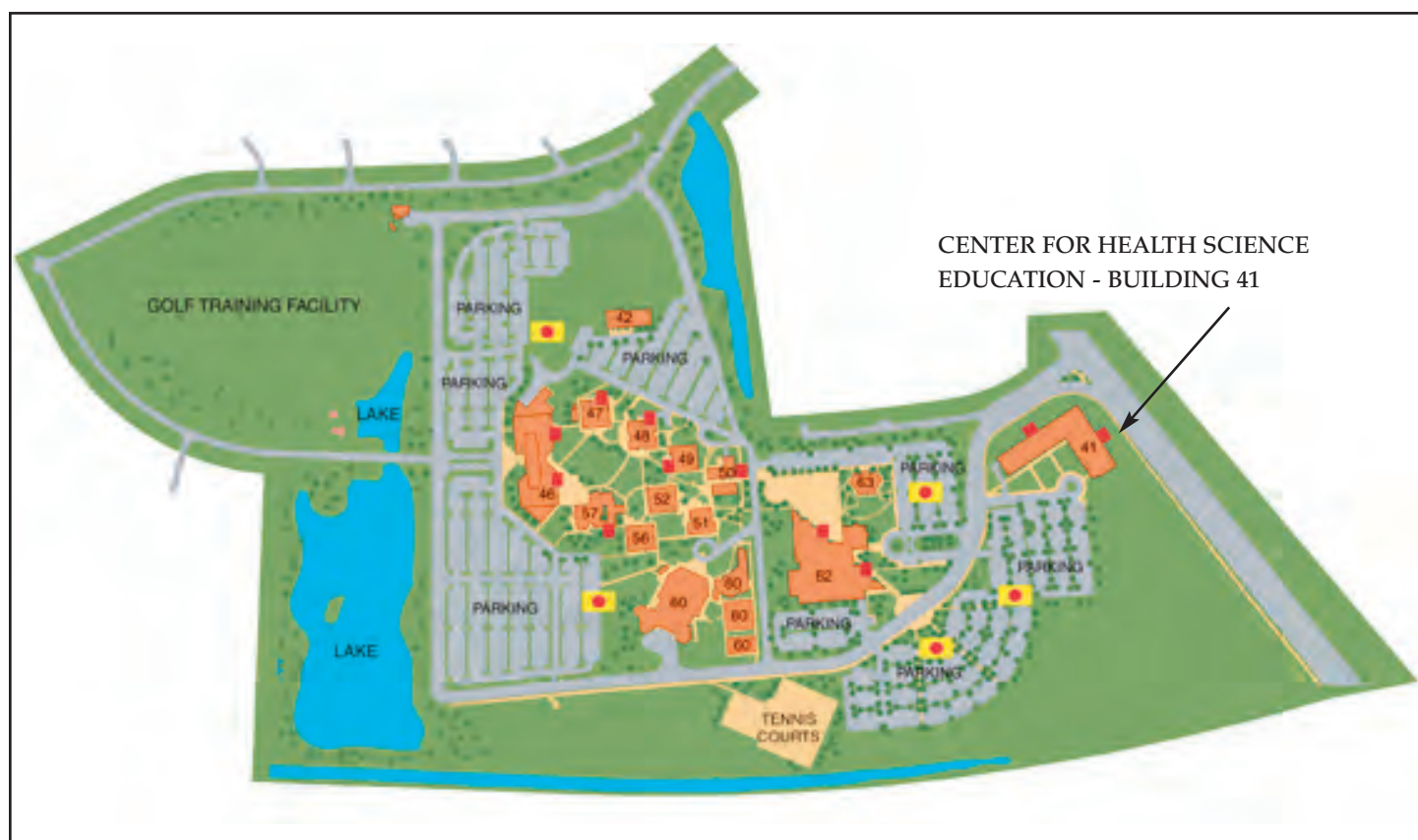
CENTER FOR HEALTH SCIENCE EDUCATION - BUILDING 8



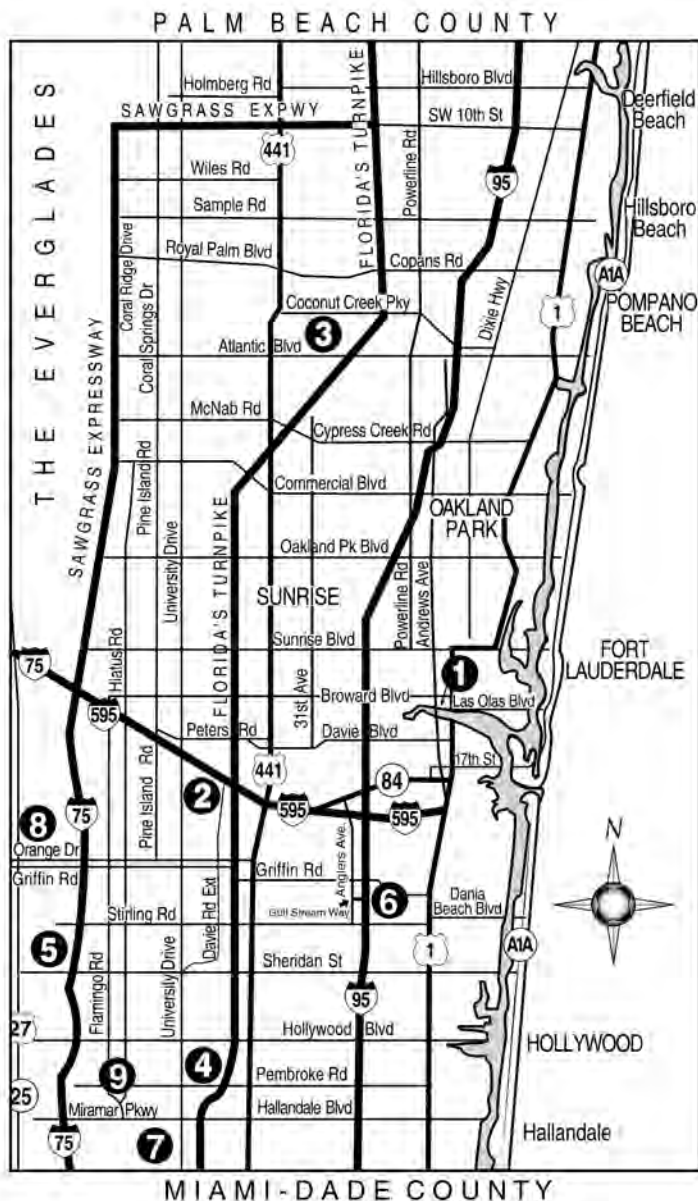
Campus Maps

NORTH CAMPUS

1000 COCONUT CREEK BLVD., COCONUT CREEK, FL 33066
CENTER FOR HEALTH SCIENCE EDUCATION - BUILDING 41




Campus Maps



1. WILLIS HOLCOMBE CENTER
111 East Las Olas Boulevard
225 East Las Olas Boulevard
Ft. Lauderdale, FL 33301
2. A. HUGH ADAMS CENTRAL
CAMPUS
3501 S.W. Davie Road
Davie, FL 33314
CENTER FOR HEALTH SCIENCE
EDUCATION
BUILDING 8
3. NORTH CAMPUS
1000 Coconut Creek Boulevard
Coconut Creek, FL 33066
CENTER FOR HEALTH SCIENCE
EDUCATION II
BUILDING 41
4. JUDSON A. SAMUELS
SOUTH CAMPUS
7200 Hollywood / Pines Blvd.
Pembroke Pines, FL 33024
MODULES 89, 91, and 95
5. PINES CENTER
16957 Sheridan Street
Pembroke Pines, FL 33331
(no Health Science classes offered at
this location)
6. TIGERTAIL LAKE
RECREATIONAL CENTER
580 Gulfstream Way
Dania Beach, FL 33004
(no Health Science classes offered at
this location)
7. MIRAMAR CENTER
7451 Riviera Blvd.
Miramar, FL 33023
8. WESTON CENTER
4205 Bonaventure Blvd.
Weston, FL 33332

COMING TO CLASS LATE FOR ANY REASON, INCLUDING PARKING PROBLEMS, WILL RESULT IN A LOSS OF ALL CONTACT HOURS.

Mail-in Registration Form

 www.broward.edu	TERM IN WHICH COURSE(S) OFFERED: <input type="checkbox"/> FALL (Term 1) <input type="checkbox"/> WINTER (Term 2) <input type="checkbox"/> SUMMER (Term 3)	NON-CREDIT COURSE REGISTRATION / APPLICATION MAIL TO: Registrar Broward College 225 East Las Olas Blvd., Fort Lauderdale, FL 33301	BROWARD COLLEGE EMPLOYEE _____ DATE _____ TERM/SESSION _____ FEE CARD NO. _____		
	Name (last, first, middle) _____ Social Security Number _____ Street Address _____ City/County/State/Zip _____ Home Phone _____ Work Phone _____ e-mail address _____ Birth Date (month/date/year) _____ Sex <input type="checkbox"/> Male <input type="checkbox"/> Female High School/GED graduate <input type="checkbox"/> Yes <input type="checkbox"/> No Date _____ Location <input type="checkbox"/> A. Hugh Adams Central <input type="checkbox"/> North <input type="checkbox"/> Judson A. Samuels South <input type="checkbox"/> Willis Holcombe Center <input type="checkbox"/> Health Sciences <input type="checkbox"/> Commercial <input type="checkbox"/> Pines Center <input type="checkbox"/> Other _____ <input type="checkbox"/> Current or returning (within one year) BCC student <input type="checkbox"/> Never attended BCC classes or attended more than one year ago. Health Professions (Clinical Lab, Dental, Nursing, Psychological Services, Radiology, Respiratory, etc.) _____ License Certifications Number (JC , RN, RT, etc.) _____ Race/Ethnic Data (required for reporting purposes) <input type="checkbox"/> American Indian/Alaskan Native <input type="checkbox"/> Asian/Pacific Islander <input type="checkbox"/> Black (not of Hispanic origin) <input type="checkbox"/> Cuban National <input type="checkbox"/> Hispanic <input type="checkbox"/> White (not of Hispanic Origin) Immigration Status: <input type="checkbox"/> U.S. Citizen <input type="checkbox"/> Resident Immigrant Alien A No. _____ <input type="checkbox"/> Non Resident Immigrant Alien <input type="checkbox"/> I certify that I qualify as a Florida resident for tuition purposes and that I have resided in Florida as a permanent resident for the past twelve months or longer. (Residency qualifications are found in the College Catalog) OR <input type="checkbox"/> I have not resided in Florida as a permanent resident for the past twelve months. I declare under penalty of perjury punishable by law as a misdemeanor under Section 837.06 F.S. that the foregoing is true and correct. Signature (Student or parent if applicant is under 18) _____ Date _____				
REGISTRATION					
REFERENCE NO.	COURSE NO.	COURSE TITLE	DAY	TIME	FEE
NOTE: Make check or money order payable to Broward College. Write your Social Security number on the face of your check. Cash payment can be accepted only if you register in person. Fees are refundable if the college cancels a class, or if you officially withdraw through an Office of the Registrar of the college on or before the date of the scheduled class meeting. For courses that only meet for one or two days, withdrawal must be prior to the first class day.					TOTAL \$

AN EQUAL ACCESS/EQUAL OPPORTUNITY INSTITUTION

REG-3 (CEHS) (Rev. 1/2011)



BROWARD COLLEGE

Cashier's Office

CREDIT CARD AUTHORIZATION FORM TELEPHONE/ FAX/ MAIL

All fields must be completed.

Name of Card Holder: _____

Card Type: Visa MasterCard Discover American Express

Card Number: _____

NOTE: Card Identification Data must be recorded in the section below the dotted line on the bottom of the form or the transaction cannot be processed.

Expiration Date: _____

Billing Address: _____

Billing Zip Code: _____

Student or Company Name: _____
(Name payment receipt will be processed under)

Student's Social Security Number: _____
(or Tax Identification Number or Customer ID)

Authorized Charge Amount: \$ _____

The above information is authorization for course and/ or fee payment to Broward Community College.

Today's Date: _____

FAX or MAIL –

• Cardholder's Signature: _____

TELEPHONE –

• Caller's Name: _____

• Information Recorded By: _____
(BCC Employee)

----- ✂ -----
The following information MUST be provided for non-present card transactions:

Card Identification Data:

Cardholder must provide the code that corresponds to the credit card type

- Visa CVV2 (3-digit code, located on back of card in signature panel) _____
- MasterCard CVC2 (3-digit code, located on back of card in signature panel) _____
- Am Express CID (4-digit code, located on front of card) _____
- Discover CID (3-digit code, located on back of card in signature panel) _____

Cashier: upon completion of transaction, tear form on dotted line and shred Card Identification Data. Retain remainder of form with the credit card sales slip.