



FileZilla is a fast and reliable FTP, and Secure FTP client with lots of useful features and an intuitive graphical user interface.

FileZilla is the recommended program by Information Technology for faculty to access their faculty websites.

FileZilla is free to download and use. It runs on Windows, Mac and Linux.

It can even be run from a thumb drive for portability.

FileZilla can be obtained by visiting the project website:

<http://filezilla-project.org>

Once on the site you are given the opportunity to download the current stable version of FileZilla.

Overview

Welcome to the homepage of FileZilla, the free FTP solution. Both a client and a server are available. FileZilla is open source software distributed free of charge under the terms of the GNU General Public License

Support is available through our forums, the wiki and the bug and feature request trackers.

In addition, you will find documentation on how to compile FileZilla and nightly builds for multiple platforms in the development section.

Quick download links

Download FileZilla Client
All platforms

Download FileZilla Server
Windows only

Pick the client if you want to transfer files. Get the server if you want to make files available for others.


Click on the "Download FileZilla Client" to go to the download Page.


Client Download

The latest stable version of FileZilla Client is 3.3.4.1

Please select the file appropriate for your platform below.


Windows


→ [FileZilla_3.3.4.1_win32-setup.exe](#)  (recommended)

→ [FileZilla_3.3.4.1_win32.zip](#) 

Windows XP, Vista and Windows 7 are supported


Linux


→ [FileZilla_3.3.4.1_i586-linux-gnu.tar.bz2](#) 

→ [FileZilla_3.3.4.1_x86_64-linux-gnu.tar.bz2](#) 

Built for Debian 5.0 (Lenny). It is highly recommended to use the package management system of your you are running a different flavour of Linux.

Mac OS X

→ [FileZilla_3.3.4.1_i686-apple-darwin9.app.tar.bz2](#)  (Intel)

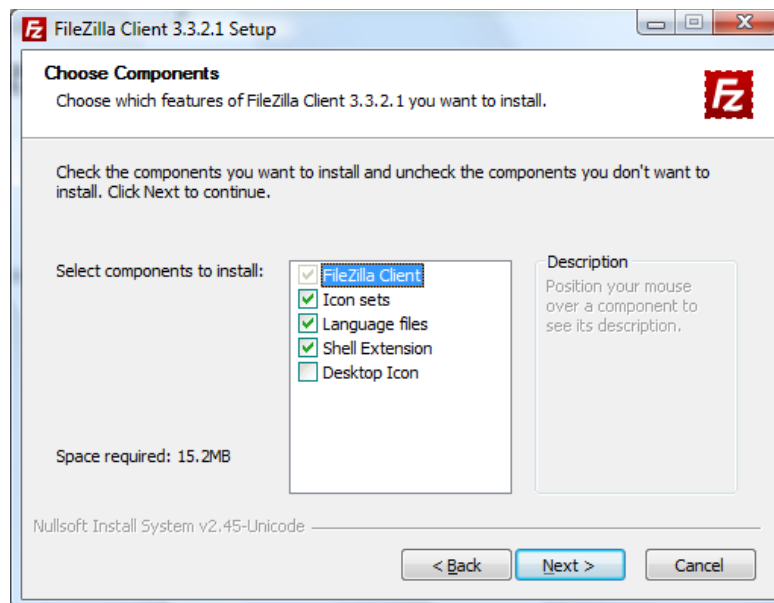
→ [FileZilla_3.3.4.1_powerpc-apple-darwin9.app.tar.bz2](#)  (PowerPC G4)

Requires OS X 10.5 or newer

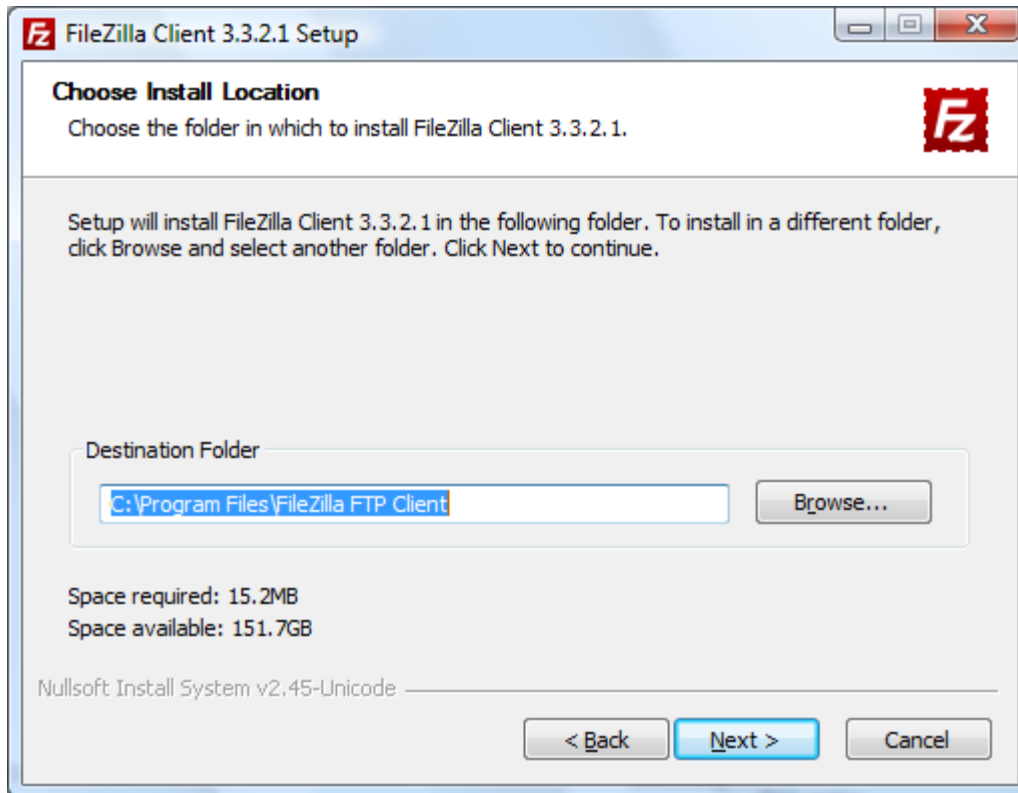
From here you can download the version appropriate to your operating system.

Note that for the mac there are two versions: one for Intel Macs and one for PowerPC macs. Make sure you download the correct one for the mac you are using.

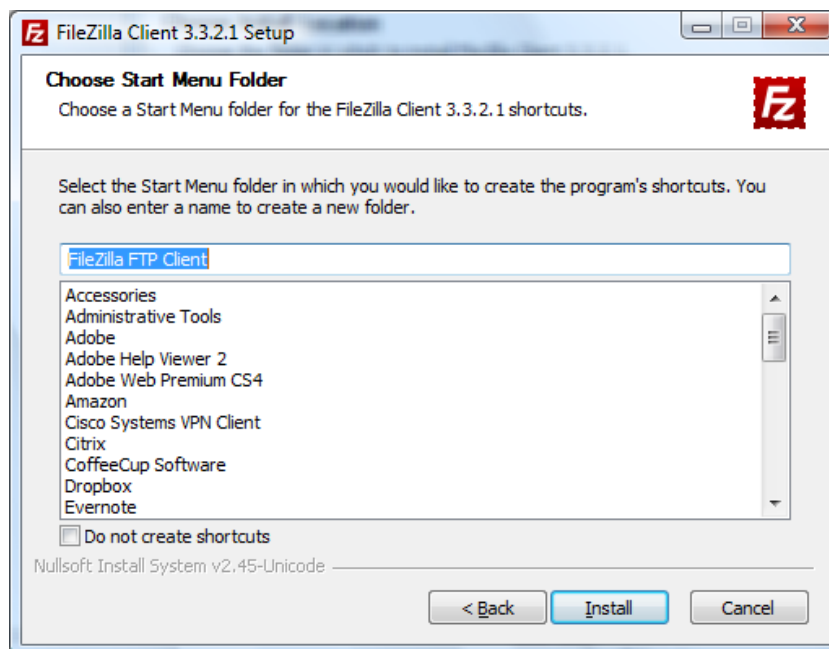
Once you've downloaded and run the installer file, you'll be presented with this options screen.



You can accept the defaults as they are. If you want a Desktop icon for FileZilla, you can check that box now.

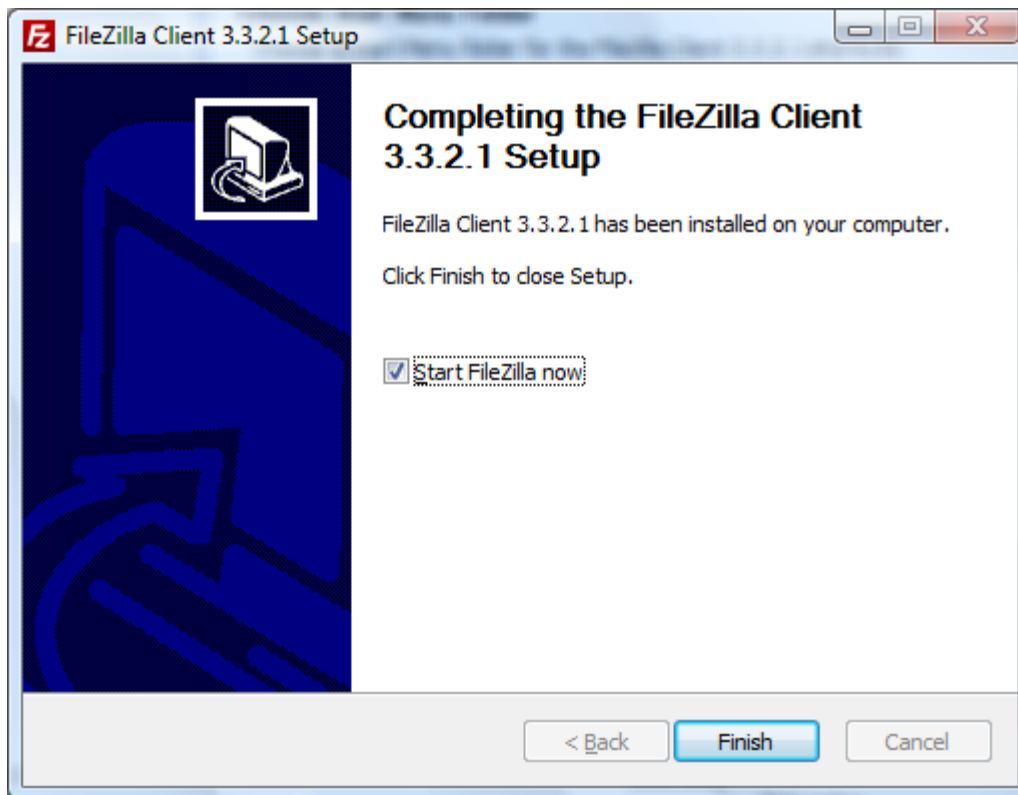


You'll then be presented with the install location option. Unless you have a compelling reason to change it you can click "Next" to accept the default location.



For Windows installs you can now choose if FileZilla creates a folder and an entry in the Start Menu.

Unless you have a compelling reason to change it, you should accept the default and click on "Install" to start the installation.

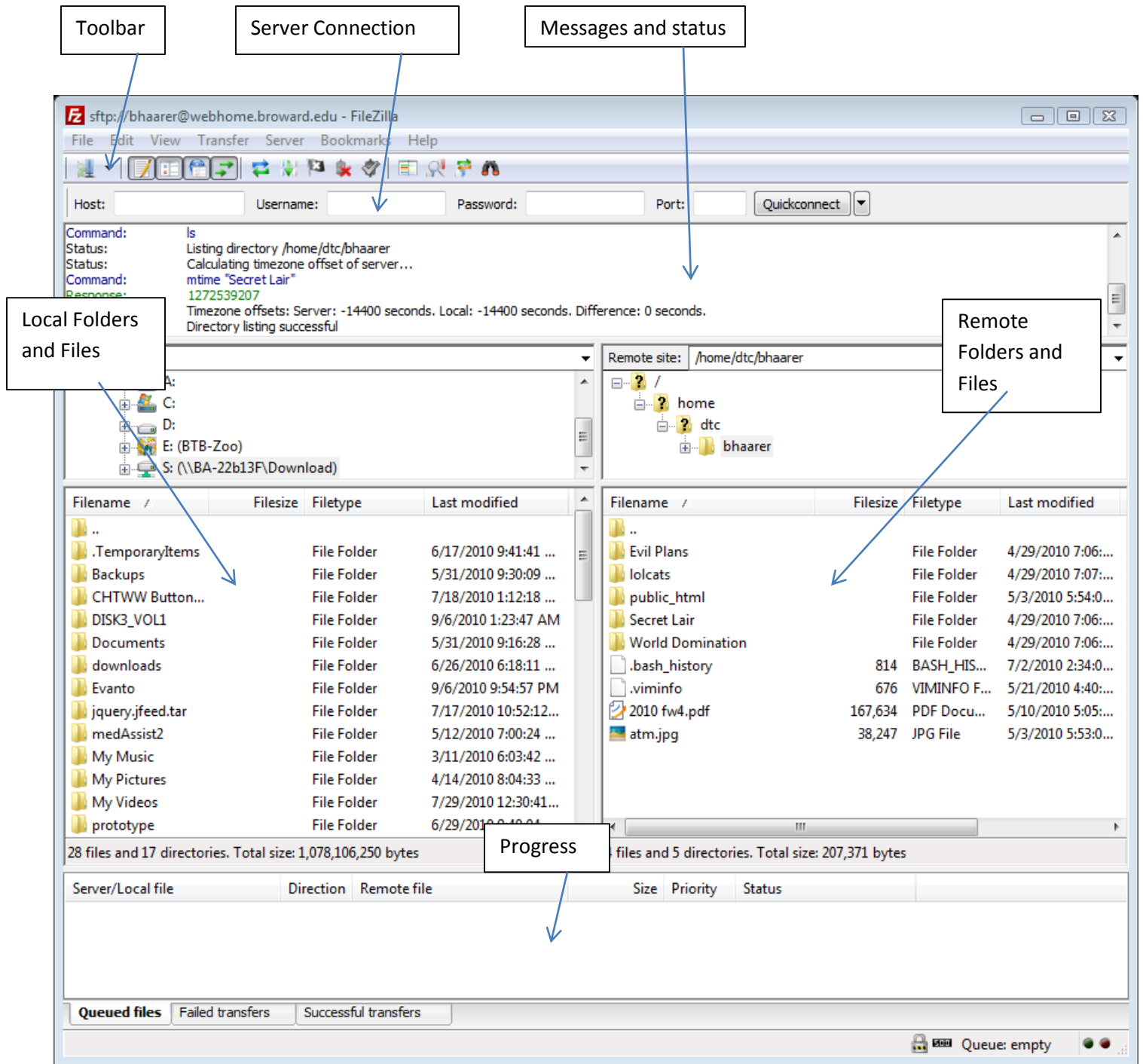


Once the installer finishes you'll get this screen. Uncheck the "Start FileZilla now" box if you don't want FileZilla to launch when you click Finish.



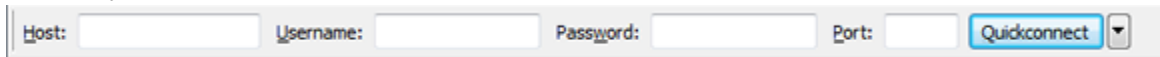
Upon the first launch of FileZilla you are presented with this dialog box. It gives you links to documentation, the online forums, and where to submit support requests. Click OK to close this box and launch FileZilla. You can always bring this box back up by going to "Help" and choose "Show Welcome Dialog. . ."

The basic FileZilla interface is pretty straight forward.

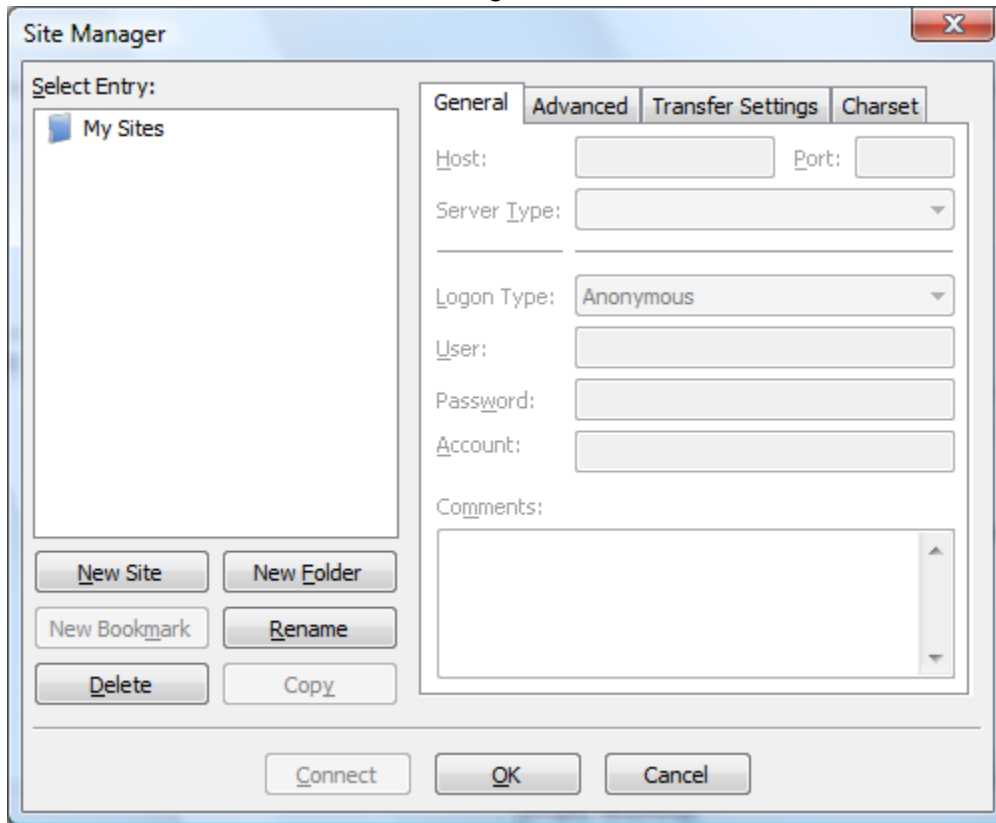


There are two ways to connect to a server from FileZilla.

- 1) Manually enter the information in the Server Connection Bar



2) Create a Site Definition in Site Manager

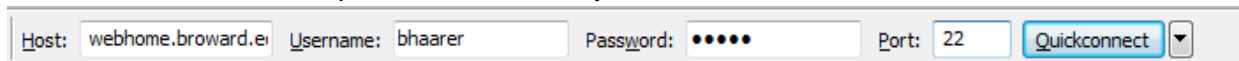


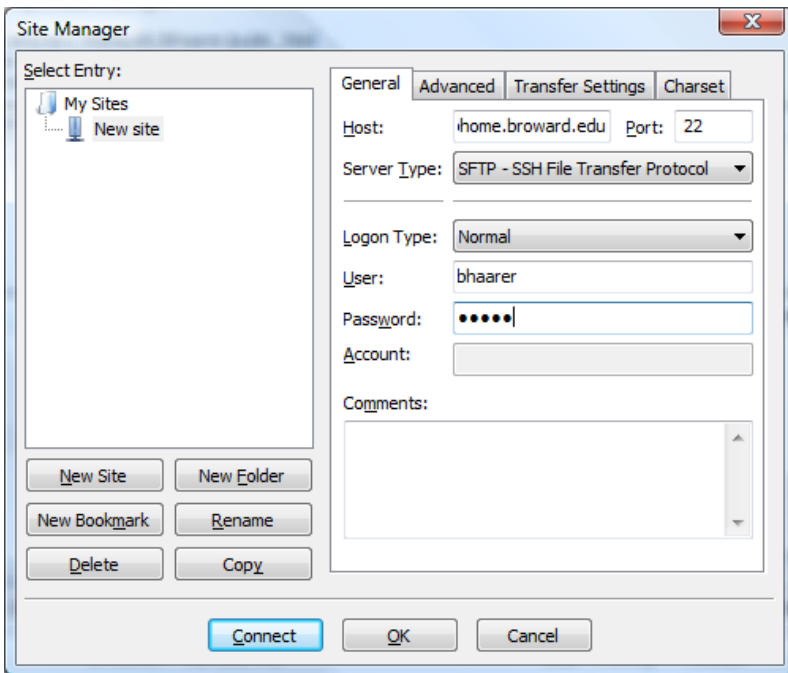
Either method requires the same basic information to connect to the Broward College server

Host: webhome.broward.edu

Username and Password: is the same username and password you use for your email.

Port: For secure FTP the port number is always 22





To save a server configuration

You can use the Site Manager.

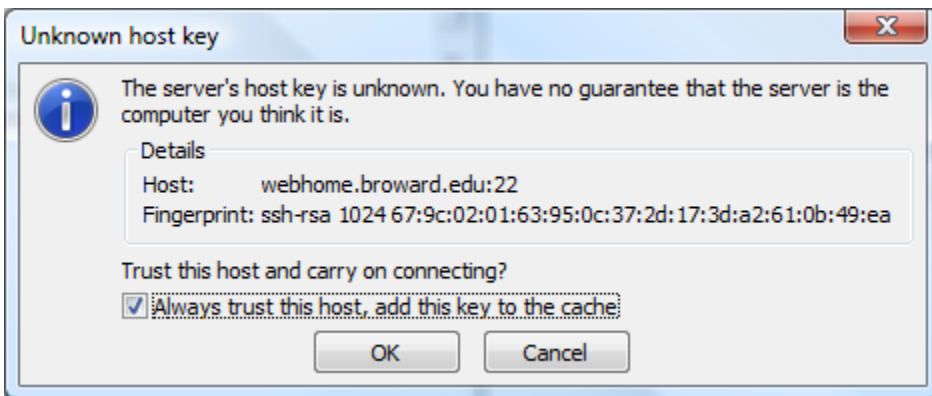
You use the same settings, but the site manager allows you to store the username and password.

You should only do this on a machine that you control. Do not store your username and password on a public or shared computer.

Regardless of the method you choose. Once you have a site defined, you can choose to connect to it.

```
Command: ls
Status: Listing directory /home/dtc/bhaarer
Status: Calculating timezone offset of server...
Command: mtime "Secret Lair"
Response: 1272539207
Status: Timezone offsets: Server: -14400 seconds. Local: -14400 seconds. Difference: 0 seconds.
Status: Directory listing successful
```

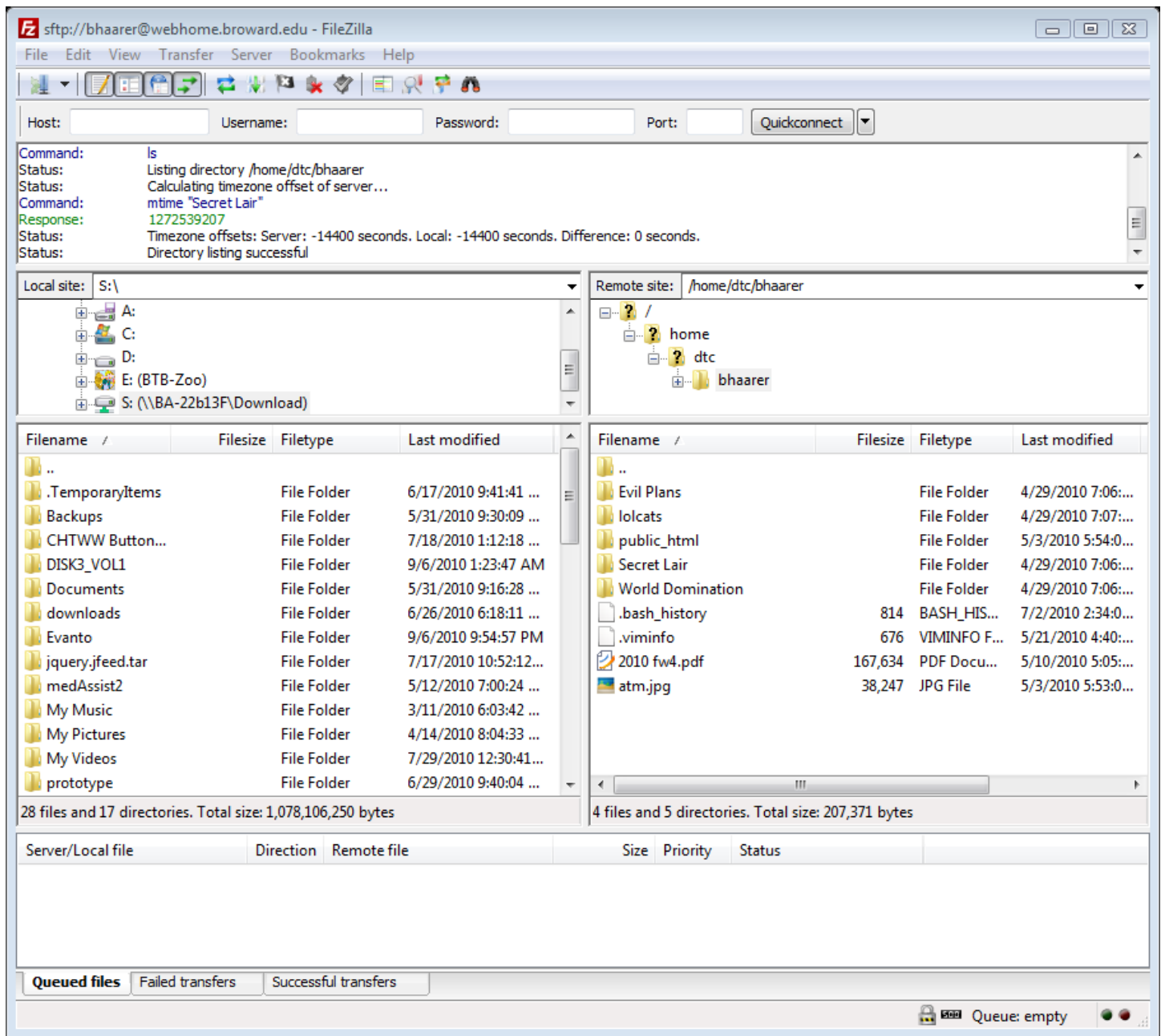
The message window will start updating with information as FileZilla establishes the connection.



If this is the first time you are connecting to the server you'll get this dialog. To trust the key click the "Always trust this host, add this key to the cache" box.

NOTE Do not save the key on a shared or public computer. Only do this on a computer that you control.

Once you are connected you should see a screen similar to this:

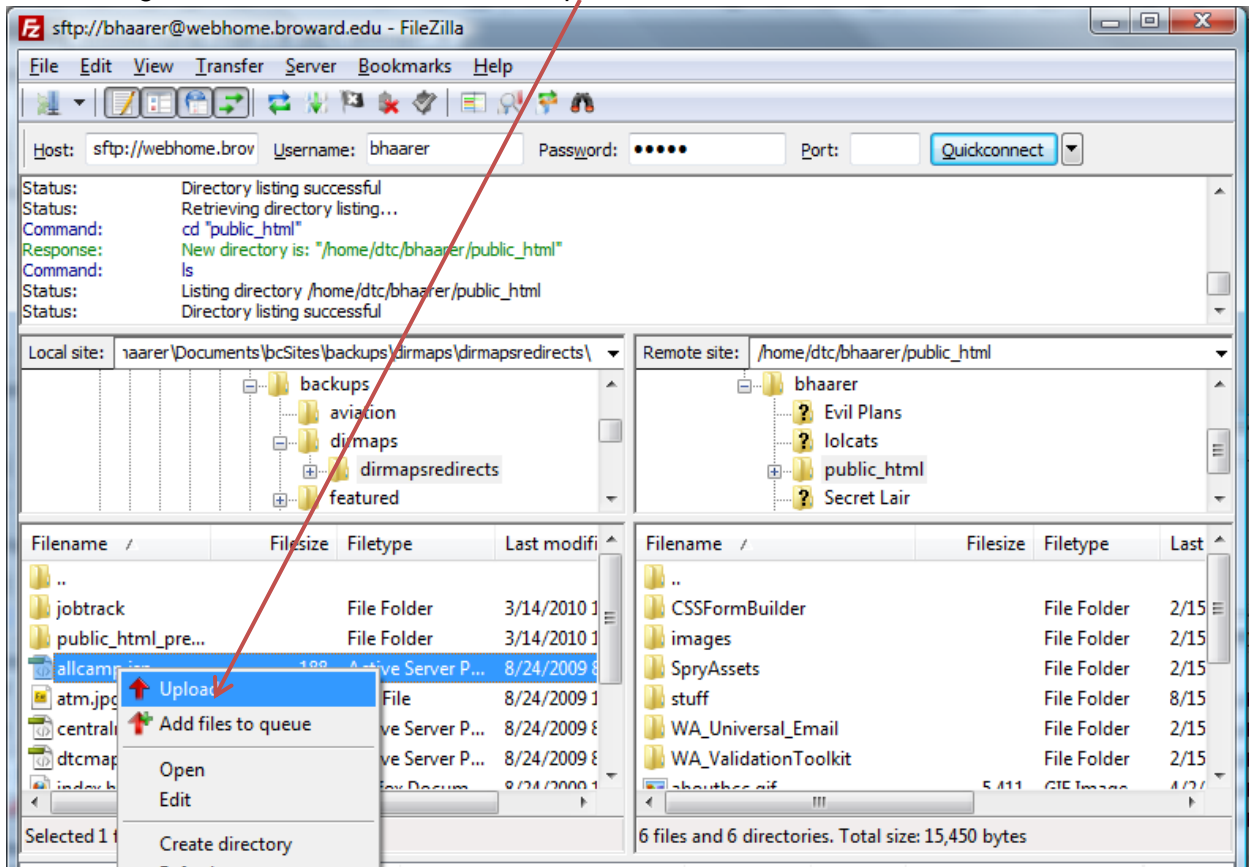


NOTE The files that make up your faculty web page have to go into the public_html directory.

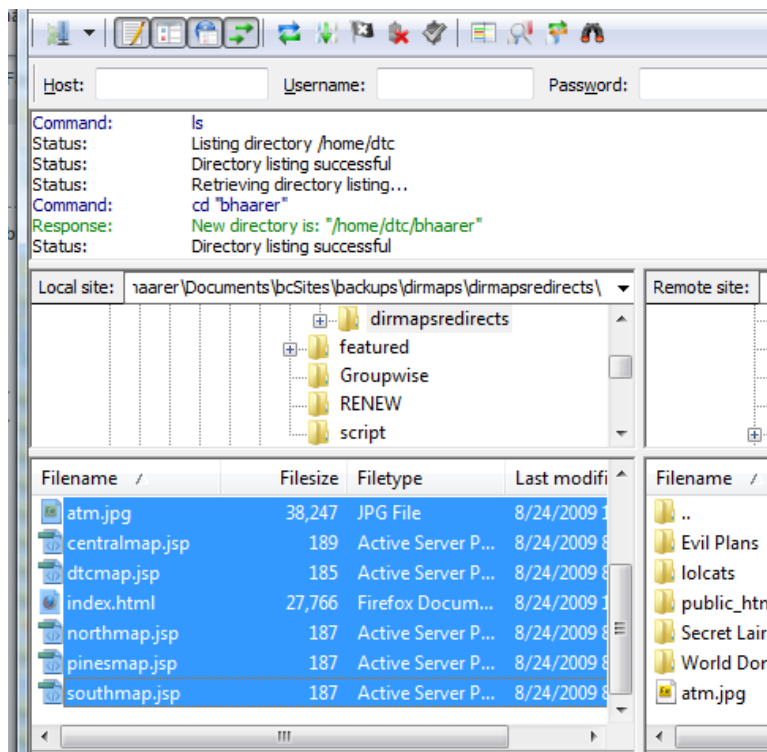
There are two methods to upload a file to the server.

- 1) You can drag the file from the local side to the remote side. The file will copy to the remote server.

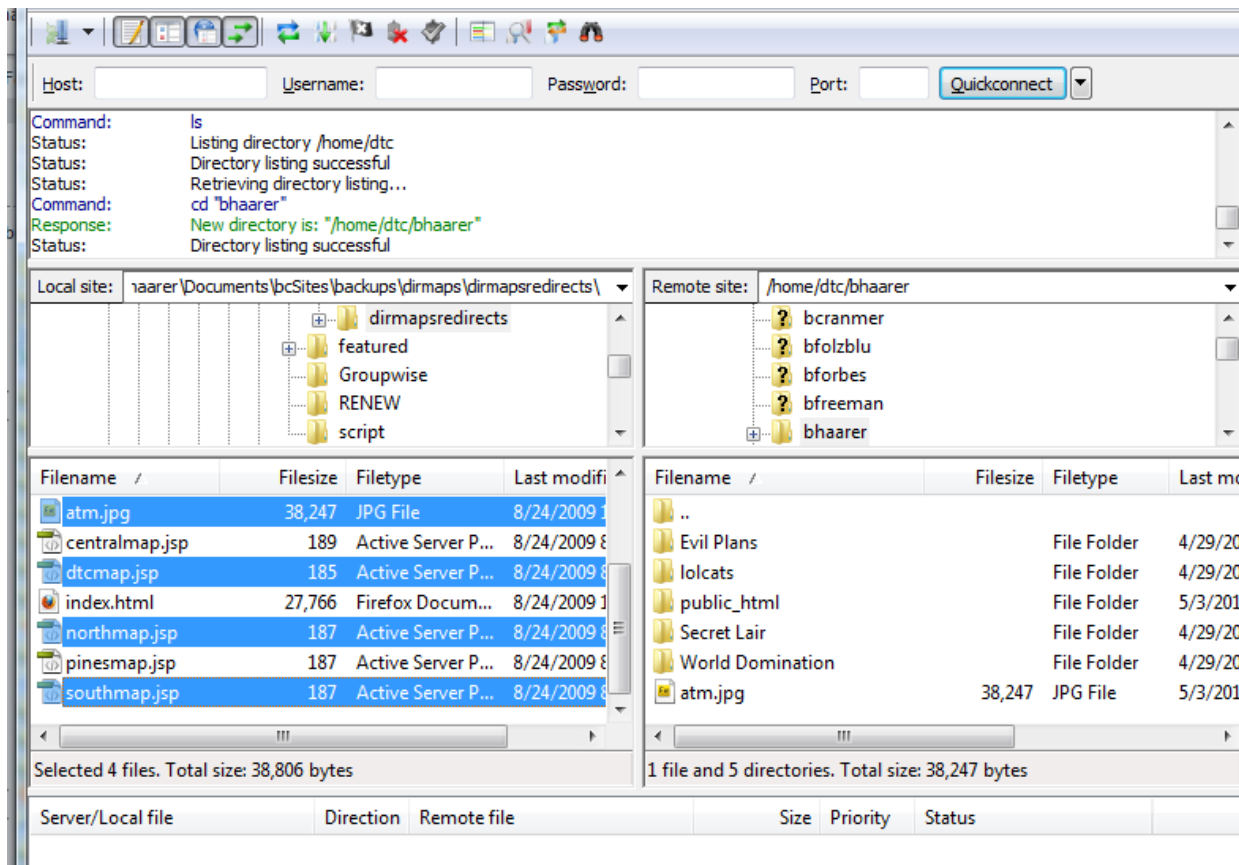
2) You can right click on the file and choose upload



You can select multiple successive files by holding down the shift key and choosing the range of files you want to upload



You can also use the Control (ctrl) key and clicking on each file you want to upload.



Additional tutorials for FileZilla can be obtained at the FileZilla project wiki at:

<http://bit.ly/fztutorial>