

WinSCP

Free SFTP, FTP and SCP client for Windows

WinSCP is an open source secure FTP application available for Windows XP, Vista and Windows 7. It's available for free download from:

<http://winscp.net/eng/index.php>

The actual version number you see may be different.

WinSCP
Free SFTP, FTP and SCP client for Windows

[News](#) [About](#) [Download](#) [Plugins to File Managers](#) [Donations](#) [Forum](#) [Tracker](#) [Documentation](#)
[Guides](#) [F.A.Q.](#) [Support](#) [Scripting](#) [Translations](#) [Protocols](#) [Requirements](#) [Awards](#) [Screenshots](#) [History](#)

WinSCP News

WinSCP 4.2.8 released

This release includes mostly bug fixes and few minor improvements. Published: 2010-07-14

[\[Go to Download page\]](#) [\[Complete list of changes\]](#)

Advertisements:
[WS FTP Download](#)
Simple, Secure and Lightning Fast FTP Software. Try Version 12 free.
www.IpswitchFT.com/WS_FTP

Ads by Google

Click on the Go to Download Page

WinSCP File Downloads

- [Downloads](#)
- [New Releases Notification](#)
- [Public Key Tools](#)
- [Licence](#)

Downloads

WinSCP 4.2.8

[Installation package](#) (3,140,130 bytes; 453,082 downloads to date)

[Portable executables](#) (2,597,659 bytes; 91,906 downloads to date)

[Source code](#) (4,459,465 bytes; 2,782 downloads to date)

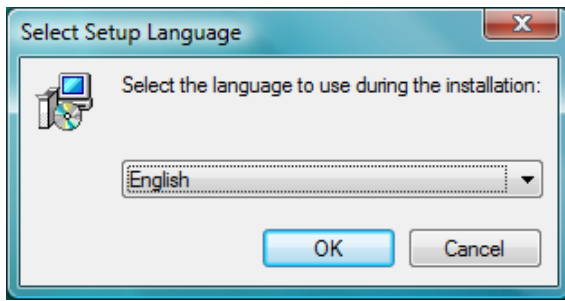
[\[Release Notes, Checksums\]](#) [\[What's new\]](#)

Released: 2010-07-14

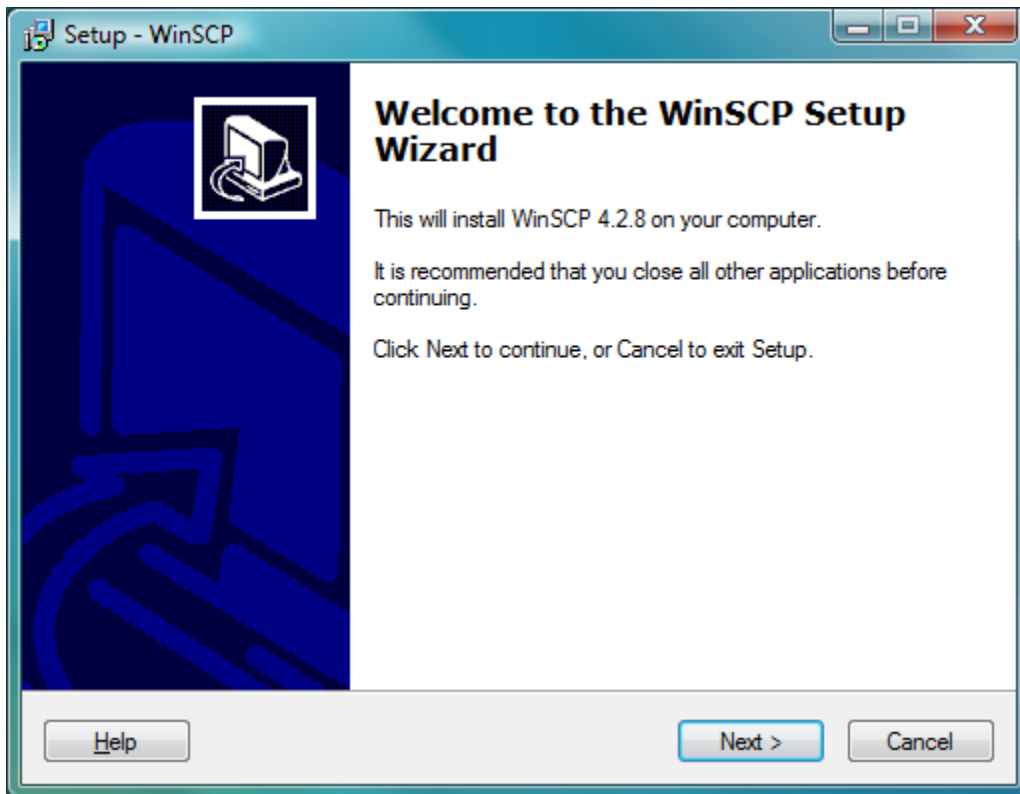
Click on the Installation Package to download the Windows Installer.

Save the Installer file to a location on your computer.

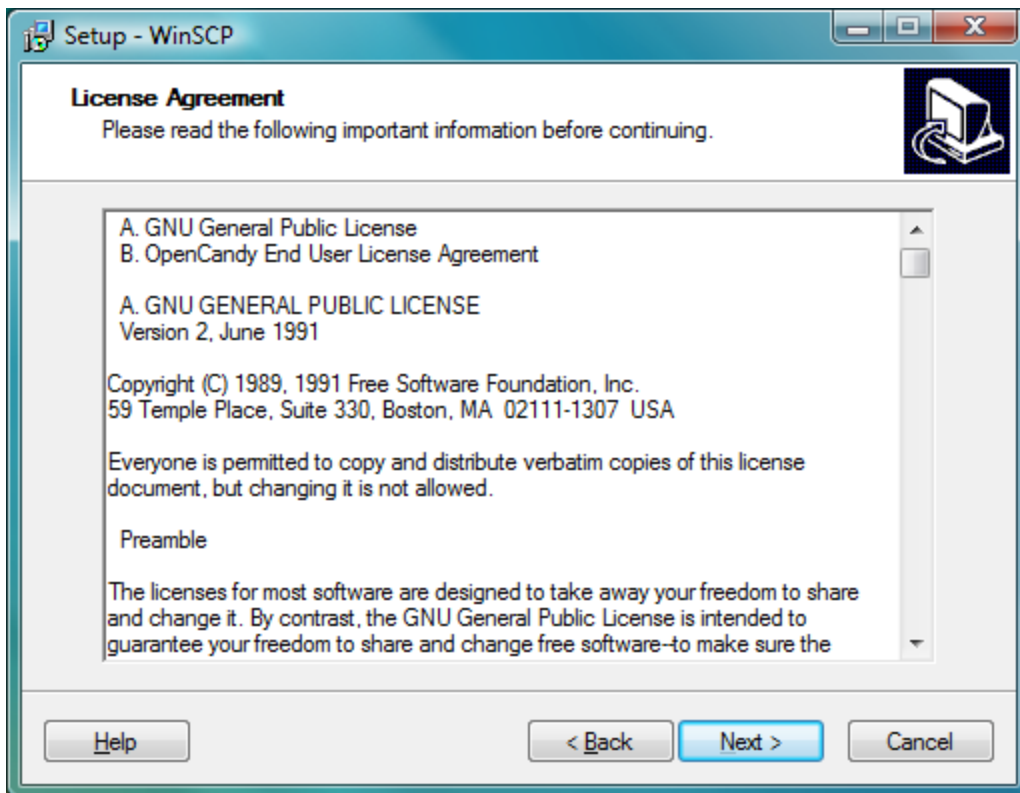
Double click it to start the installation process



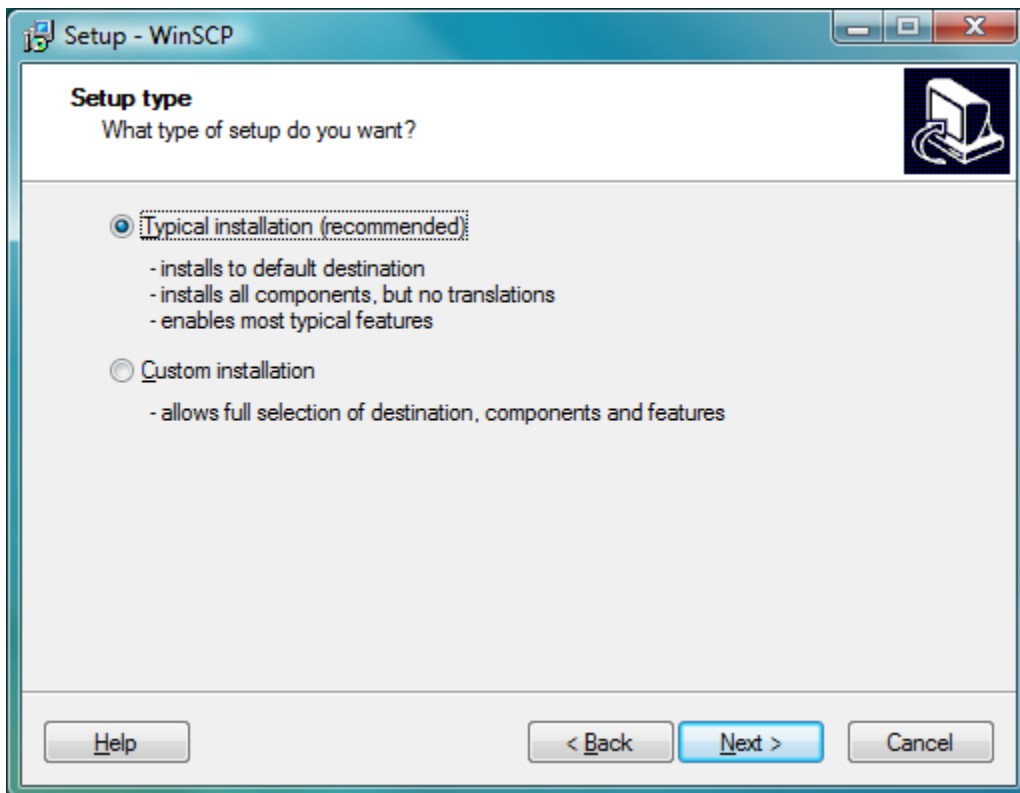
Choose your preferred language



Click Next to Continue



Click Next to Accept the License Agreement.

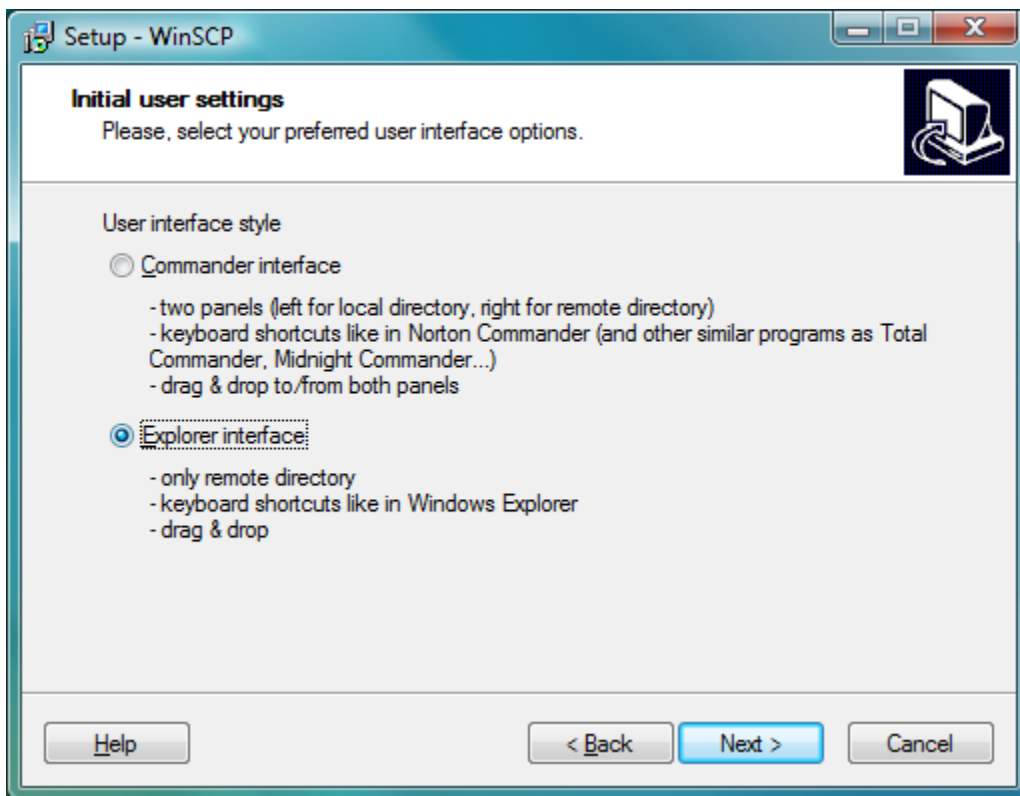


Choose your preferred setup. If you are not familiar with WinSCP or aren't sure, choose the Typical installation (it's the easiest and most straight forward).



If you are installing this on your own computer you can choose to install the Bing Tool bar.

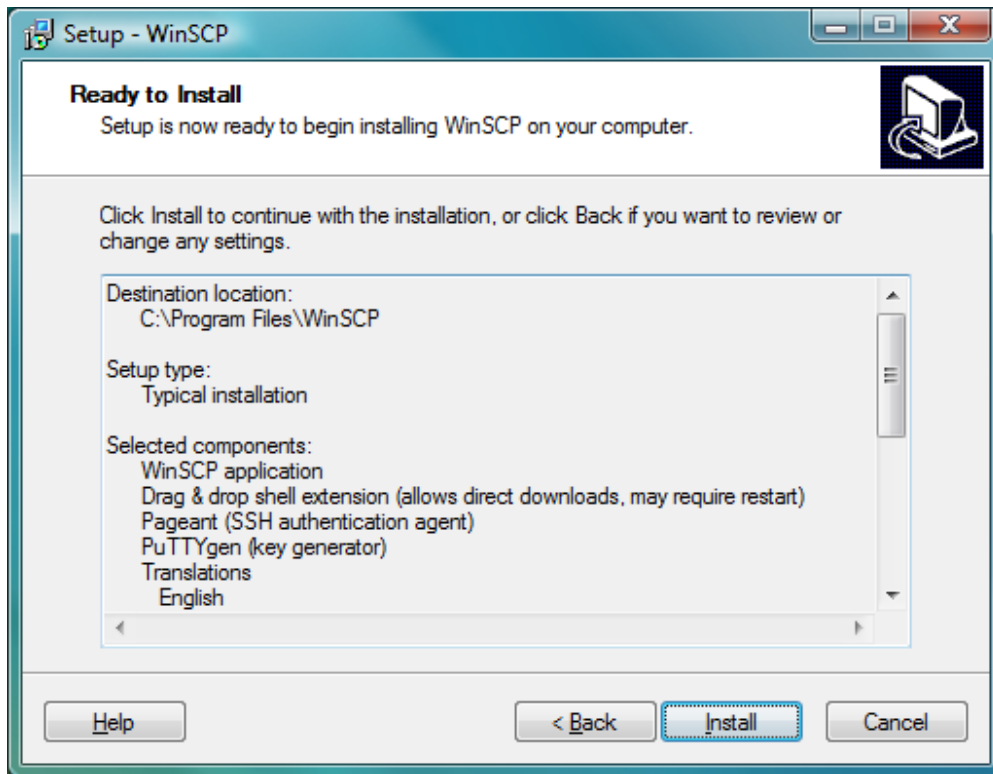
Click Next.



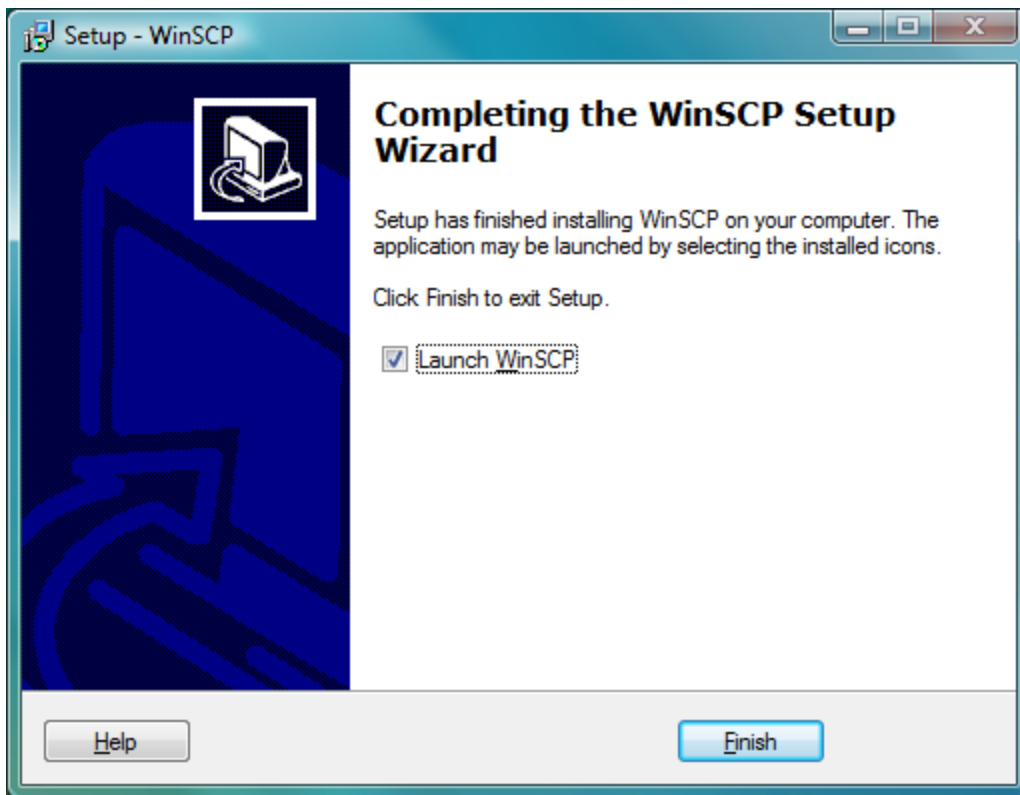
You can choose the interface you want to use. The choice can always be changed under the Preferences pane if you want to explore the other options. The Commander Interface is the easiest to use, but the Explorer Interface is a bit

more efficient. If you are unfamiliar with FTP tools use the Commander Interface (since this is closest to a Windows Explorer like interface). Remember you can always change it in the Preferences Panel if you want to.

Once you've made your choice click next.

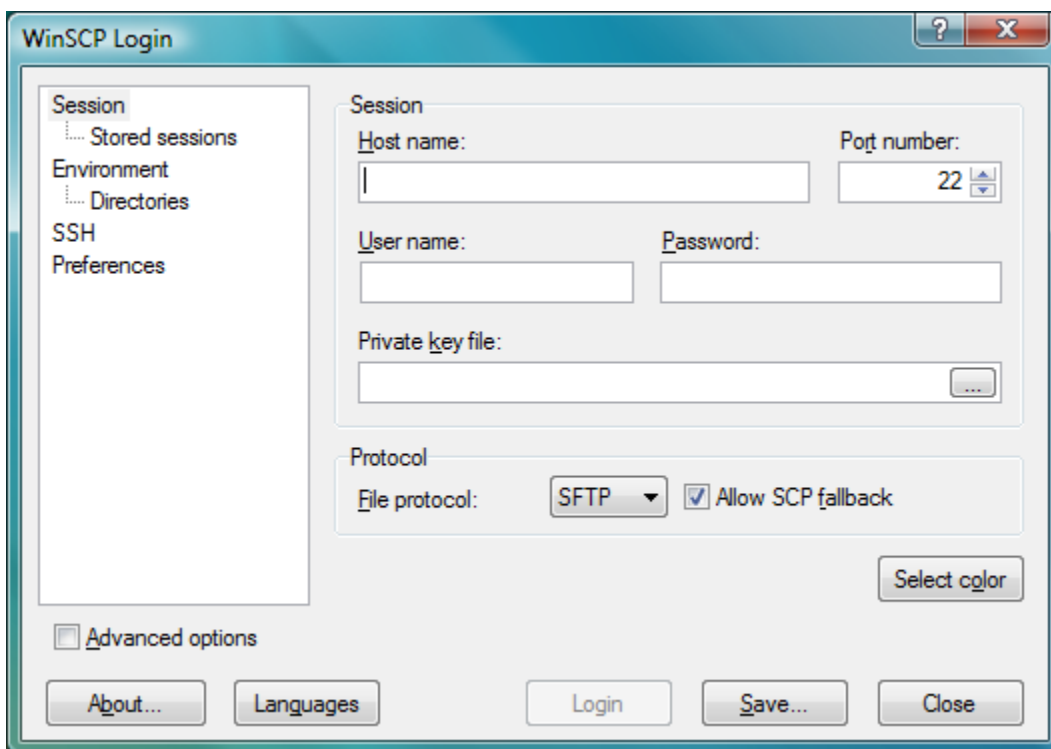


You are presented with a summary screen, if you want to make any changes you can click Back to return to the previous screens, otherwise if you are ready to go, click "Install".



Once the install is completed, you can check the Launch WinSCP box to launch the program right away.

Click Finish



This is the default screen to connect to an FTP server. To connect to the faculty webhome server enter the following:

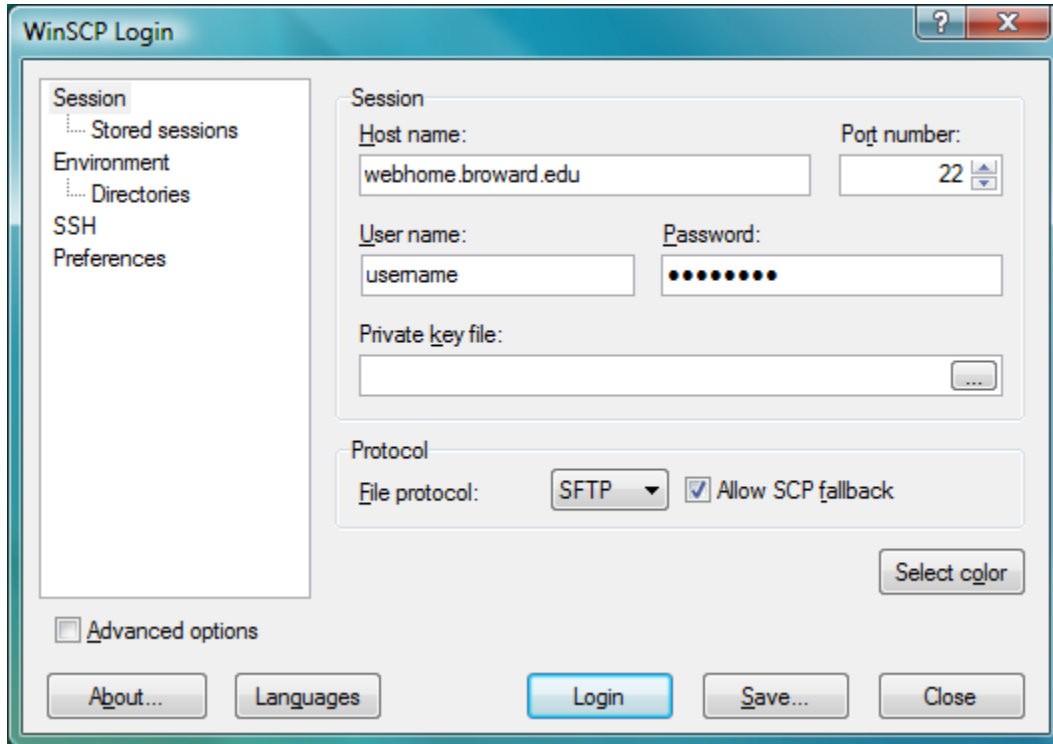
Host name: webhome.broward.edu

Make sure Port number is set to 22.

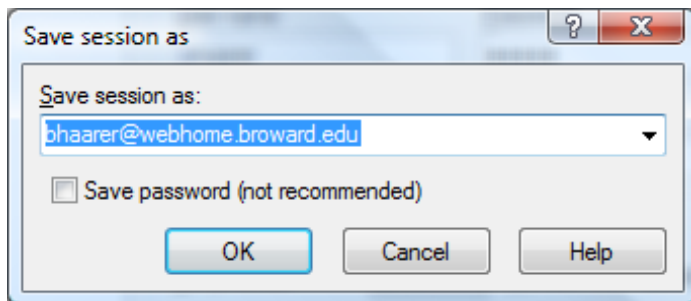
Your username and Password (the same you use for your email)

You can leave Private Key file blank

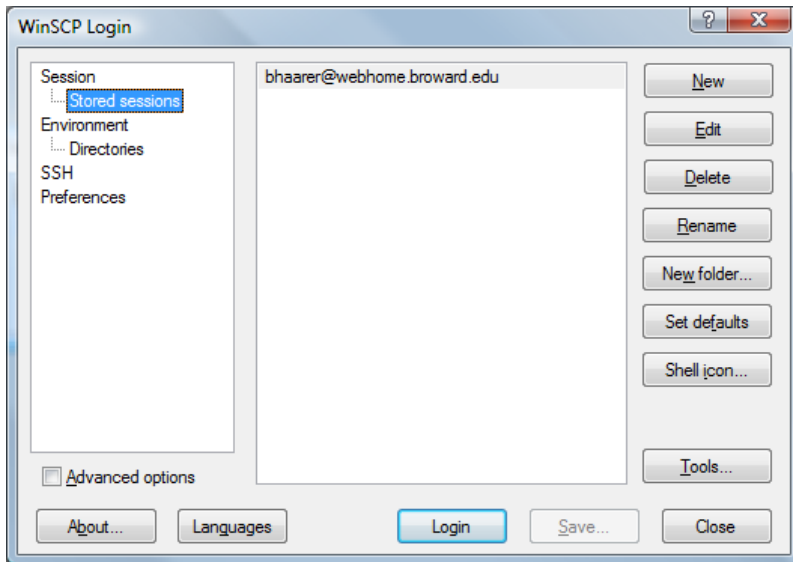
Make sure File protocol is set to SFTP



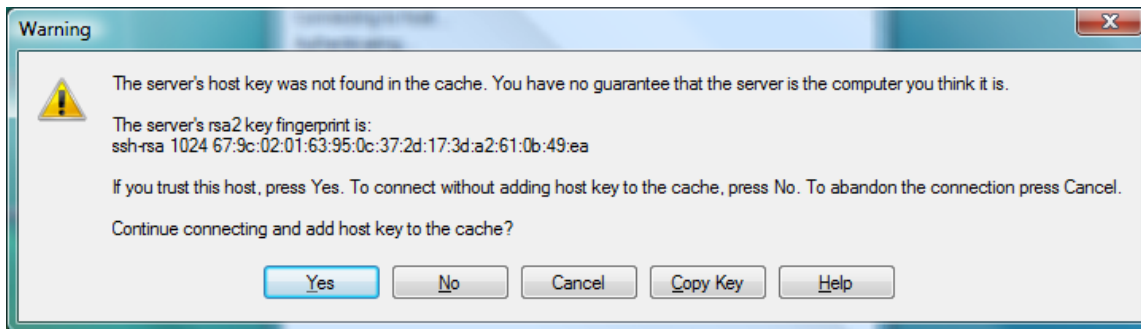
Once you have everything entered you can click “Login” to connect to the server, or Save to save the settings.



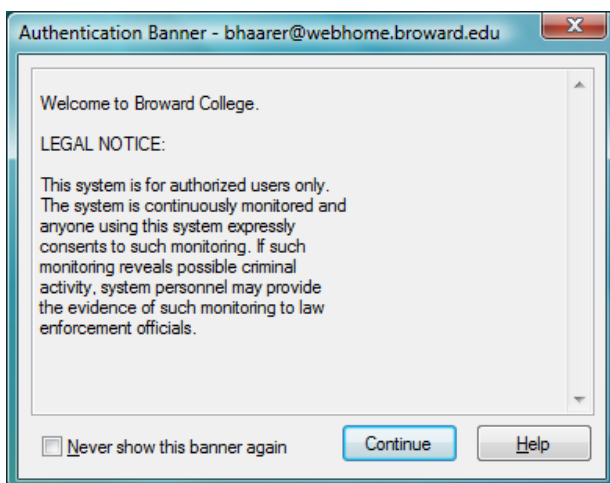
If you click Save you can give the Session a name



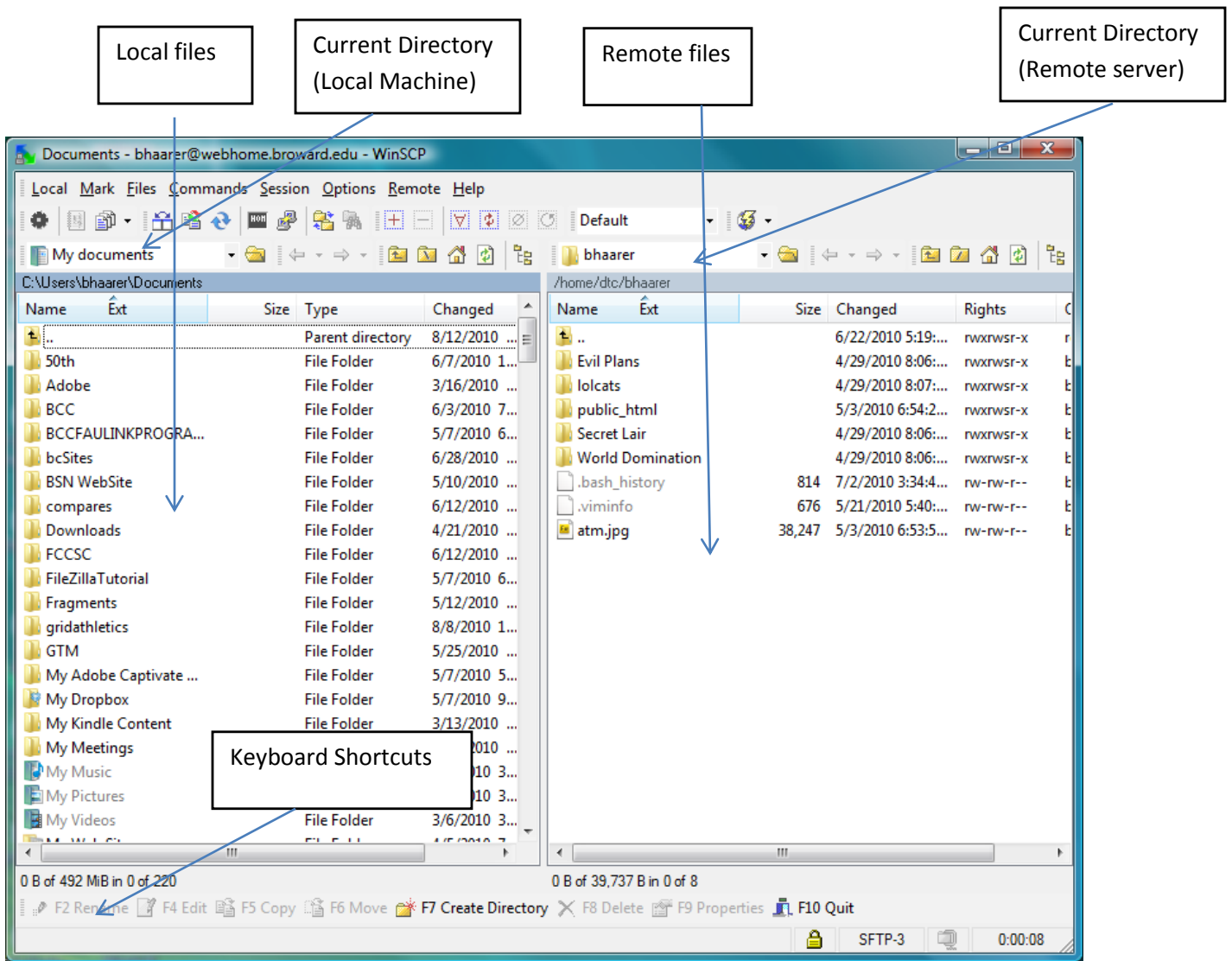
And the saved session appears in the Stored Session category under Session on the Login Screen.



When you click connect for the first time you'll be asked to save the host key on your computer. If you connect from a different computer you'll be asked to save the key again. If you are on a public or shared computer CLICK NO to prevent a potential security issue. Otherwise you can click Yes.



Once the key is stored you are presented with the Welcome to Broward College Legal Notice. You can click Continue to move past it.



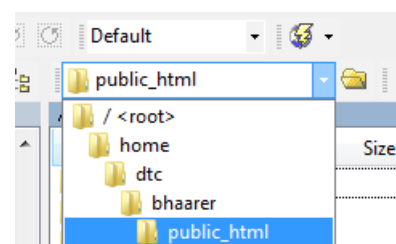
Then you are connected to your root directory on your server. This is the default (or the Commander) view.

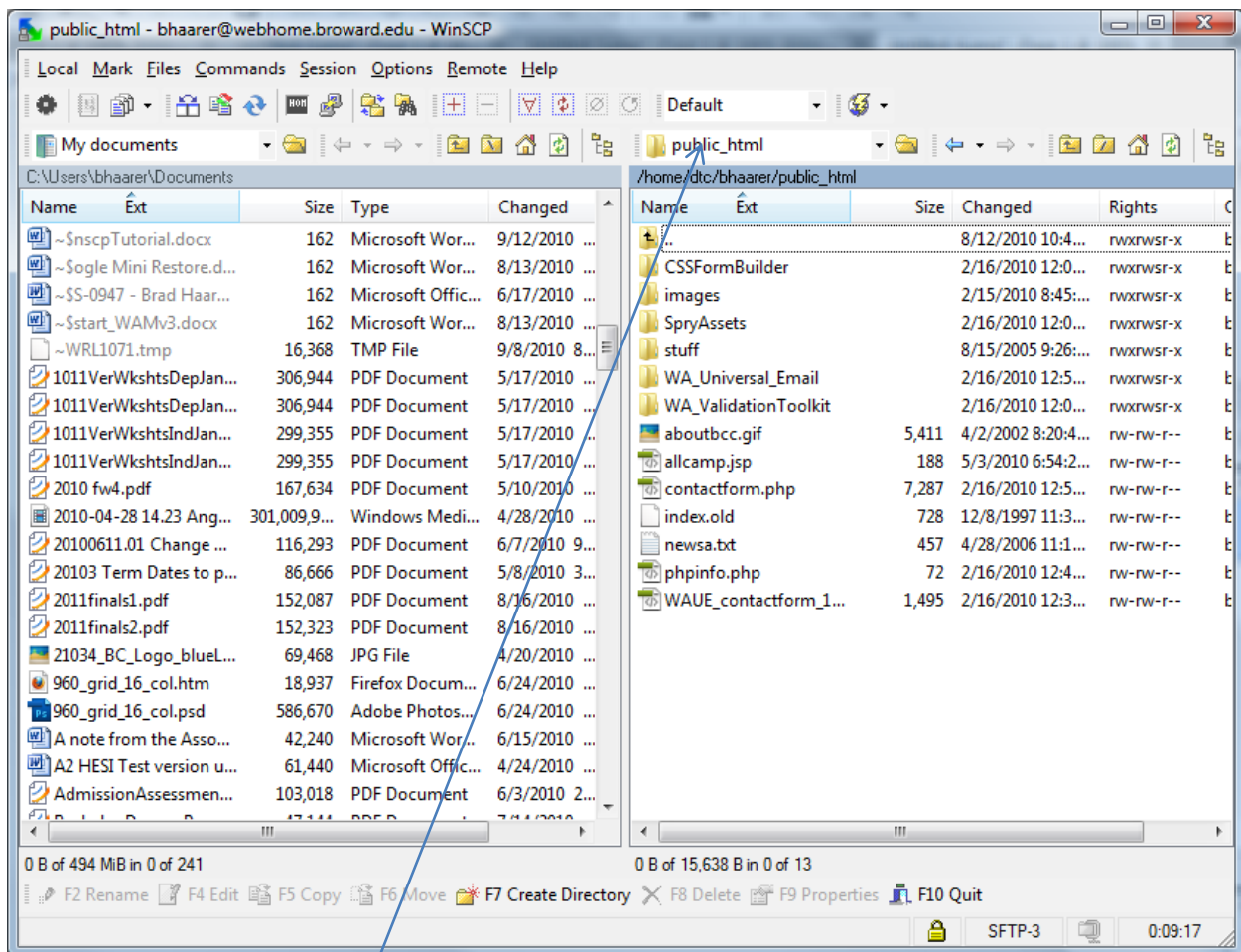
Local files (files on your computer) are located on the left. The remote files (the server) are on the right.

Remember:

Your faculty website needs to be located in the public_html directory to be seen on your faculty website. Anything you place *outside* that directory will not be available on your faculty website.

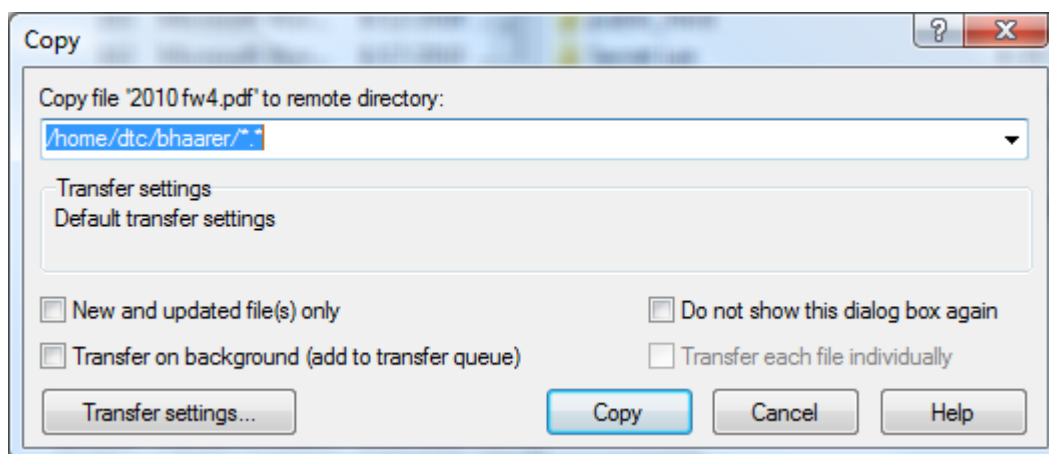
To change directories you can just double click on the directory you want (like the public_html directory) to be taken into that directory. Or you can choose a directory by using the dropdown list under the current directory listing





Inside the public_html directory. Notice that the current directory listing has changed to show what directory you are currently looking at on the remote machine.

You can move files from your local computer to the server either by dragging the file from the local side to the remote side or by selecting the file and pressing the F6 key.



When you copy a file you are given a screen where you can change the directory you are uploading to and change other options (most you never need to deal with).

However if you are moving several files at once (like by choosing a directory or by control + click several files you can click the box "New and updated file(s) only and it will only move files that either don't exist on the server or have changed since they were last uploaded (this saves time if you are trying to synchronize your whole site).

Some additional WinSCP resources:

Screenshots: <http://winscp.net/eng/docs/screenshots>

Additional Guides and tutorials: <http://winscp.net/eng/docs/guides>