

BROWARD COLLEGE®

SUMMER | MAY - AUGUST 2025

WORKFORCE

WORKFORCE AND CONTINUING EDUCATION

Ready

Register Today!



- EARN YOUR CREDENTIAL AND STAND OUT
- LEARN YOUR WAY - ON CAMPUS, ONLINE, VIRTUAL

EXECUTIVE EDUCATION | CORPORATE TRAINING | CERTIFICATIONS | PROFESSIONAL DEVELOPMENT

Information Sessions, click or scan the QR code

THE SKILLS TO DO THE JOB



General Information

Letter from the AVP	02
Tuition Assistance and Scholarships	37
Registration Process	38

Artificial Intelligence 06

Allied Health and Medical Programs 25

Corporate and Customized Training 19

Professional Development

Aviation - Drones	17
Business & Finance	11
Business Management	10
Entrepreneurship	10
Finance, Accounting, Bookkeeping, Tax Preparation	11
Human Resources	12
Language: English & Foreign	17
Marketing & Sales	14
Non-Profit Organization	11
Payroll Professional	11
Supervision & Management	11
Insurance	16
Real Estate	16

IT and Computer Applications 07

MS Office Application	07
Information Technology	09

Express Courses 03

Micro learning 04

Kids and Teens 18

Download full brochure



How to Read Course Schedule

Title & Description	Project Management Hands on Intro Gain knowledge of the project management process through planning, scheduling, estimating, documenting, and more.				
ID	ED10000	12 HRS.	\$299	← Tuition	
	W 10/17	6-9p	NOR	442461	
	↑	↑	↑	↑	
	Day	Date	Time	Loc*	Reference No.
				*Location (key)	

Advance your career

and explore Broward College's non-credit healthcare training, corporate education, customized training, professional development, and industry certification opportunities. Our programs equip you with essential skills and knowledge to excel in your career and achieve your goals.



Programs are designed for today's job market with practical, hands-on training to provide you with a competitive edge. Whether you're upskilling, changing careers, or enhancing your job performance, Broward College is here to support your success and help advance your career to achieve your professional goals.

- Executive Education
- Health Sciences
- Certifications
- Corporate Training
- Professional Development
- Kids and Teens Summer College

Advance your future!

Diane Peart

Diane Peart, MBA

Associate Vice President

Workforce & Continuing Education & Health Sciences

Information Sessions

Get Trained. Get Hired.

MAY	05/01/2025 KTSC - In-Person	
	05/08/2025 Workforce- Virtual	
	05/15/2025 Healthcare- Virtual	
JUNE	06/05/2025 KTSC - In-Person	
	06/10/2025 Workforce- Virtual	
	06/12/2025 Healthcare- Virtual	

BROWARD COLLEGE DISTRICT BOARD OF TRUSTEES

Alexis Yarbrough, Chair

Zachariah "Reggie" P. Zachariah, Jr, Vice Chair

Michael Caschette, Trustee

Eileen LaMarca, Trustee

Mario Zanotti-Cavazzoni, Trustee

Mr. Torey Alston, President and Chief Executive Officer

**ONE-DAY**

EXPRESS (FAST TRACK) COURSES

Click on the "Course Title" to **Register** or browse additional course detailsCourse demo
Scan/Click

LEARN IN-DEMAND SKILLS - REGISTER, PAY AND START IMMEDIATELY

Online sessions perfect to focus on specific challenges that demands critical thinking skills

Effective Emails, Memo, and Letters **O**

Communicating clearly and concisely in written formats like email, memos, and letters is very important in a workplace setting. Improve your use of these common business communication vehicles by providing best practices and effective tips and techniques.

EDI 0820	5 HRS.	\$129
MTWRF 05/14	24/7	eLearning ME
MTWRF 06/11	24/7	eLearning ME
MTWRF 07/09	24/7	eLearning ME

Business Communication Certificate **O**

Communicating clearly and concisely in written and oral formats is critical to your professional success. From clarifying and structuring your ideas to designing the PowerPoint slides that will best complement them, the techniques, interactive exercises, and checklists.

EDI 0820	24 HRS.	\$299
MTWRF 05/14	24/7	eLearning ME
MTWRF 06/11	24/7	eLearning ME
MTWRF 07/09	24/7	eLearning ME

Effective Public Speaking **O**

Be an effective public speaker by discovering how to talk confidently and persuasively to both large and small groups. Equip yourself with the skills you need to communicate with ease and authority.

EDI 0820	5 HRS.	\$129
MTWRF 05/14	24/7	eLearning ME
MTWRF 06/11	24/7	eLearning ME
MTWRF 07/09	24/7	eLearning ME

Communicating Collaboratively **O**

In most organizational settings, you'll be expected to work in teams. At times, your team members may not be physically in the same office with you. Improve your collaborative communication by providing best practices and effective tips and techniques.

EDI 0820	4 HRS.	\$79
MTWRF 05/14	24/7	eLearning ME
MTWRF 06/11	24/7	eLearning ME
MTWRF 07/09	24/7	eLearning ME

Critical & Design Thinking **O**

Design thinking is a continuous improvement process that helps create practical and creative ways to solve problems. Learn the benefits of critical and design thinking and master the tools to strategize and generate innovation.

EDI 0820	3 HRS.	\$79
MTWRF 05/14	24/7	eLearning ME
MTWRF 06/11	24/7	eLearning ME
MTWRF 07/09	24/7	eLearning ME

Think like a Boss **O**

Learn the concepts of Business acumen and gain an understanding of handling business opportunities and risks quickly, leading to successful outcomes. Gain critical tools to be a savvy business professional in today's workplace. Course analyzes factors that drive company's performance, finances, and strategy. Also covered, leading effectively, identifying risks and influencing others.

EDI0336	6 HRS.	\$99
----------------	---------------	-------------

Email ce@broward.edu to register.

Work from Home: Technology at Home **O**

The key to a productive workday at home is being prepared for all the technology needs that accompany work-from-home situations. Nothing is worse than a frozen Zoom meeting or a VPN connection issue! This course provides learners with the knowledge, tips, and practices to manage different devices and technologies at home. In addition, it provides practical guidance for purchasing products, contracting for services, and troubleshooting common issues so your day runs smoothly from anywhere in the world.

EDI 0820	3 HRS.	\$79
MTWRF 05/14	24/7	eLearning ME
MTWRF 06/11	24/7	eLearning ME
MTWRF 07/09	24/7	eLearning ME

Networking For Success **O**

Networking has become a key activity for professionals, entrepreneurs, and organizations alike to build genuine, memorable relationships. But it can be difficult to form good networking habits on your own.

EDI 0820	3 HRS.	\$49
MTWRF 05/14	On-Demand	WEB ME
MTWRF 06/11	On-Demand	WEB ME
MTWRF 07/09	On-Demand	WEB ME

Individual Excellence: Soft Skills/Power Skills **O**

The Individual Excellence course will teach you twelve vital career-enhancing skills. You will establish a clear career path and use skills like interpersonal communication and time management to achieve your goals. You will also learn how to utilize your creativity and problem-solving skills to work through adversity.

EDI 0615	24 HRS.	\$135
MTWRF 05/14	On-Demand	WEB E2GT8530
MTWRF 06/11	On-Demand	WEB E2GT8530
MTWRF 07/09	On-Demand	WEB E2GT8530

Computer Skills for the Workplace **O**

Confidently apply for jobs knowing that you possess the computer skills needed to perform on the job. This course includes a great introduction to Windows 10 and Office 365 so that you can prosper in a modern workplace.

EDI 0615	24 HRS.	\$135
MTWRF 05/14	On-Demand	WEB E2GT9264
MTWRF 06/11	On-Demand	WEB E2GT9264
MTWRF 07/09	On-Demand	WEB E2GT9264

Financial Literacy **O**

Set clear financial goals, make the right investments, and increase your financial security. This course will help you gain control over the financial impact of your choices with tools that are useful, realistic, and easy to work into your regular routine.

EDI0660	24 HRS.	\$699
----------------	----------------	--------------

Email ce@broward.edu to register.

Effective Business Writing **O**

Improve your career prospects. Identify gaps and eliminate problem areas in your writing skills by developing professional documents. Correct gaps in your writing and reach your full potential!

EDI 0820	5 HRS.	\$129
MTWRF 05/14	24/7	eLearning ME
MTWRF 06/11	24/7	eLearning ME
MTWRF 07/09	24/7	eLearning ME

ONLINE: We bring courses to you. Anytime, anywhere

3-Month Pass* I \$349 for 3 Online Courses within 3 months

4-Month Pass* I \$399 for 4 Online Courses within 4 months

*Pass can be used by same or different student. Info: ce@broward.eduClick on the "Course Title" to **Register** or browse additional course details



Microlearning is your path to quick credentials. Pay and Start Immediately!



Course demo
Scan/Click

Register now!

SHORT COURSES (Complete in 1-Week)

Five Reasons to Register

1. Bite-sized lessons for instant understanding.
2. Add learning into your busy schedule.
3. Acquire specific skills quickly.
4. Learn on-the-go for ultimate convenience.
5. Achieve proficiency through short sessions.

BUSINESS (under 32 HRS.)

Claim your seat!

Course Title	Fees	Hrs.	Ref #
New Supervisor/Manager - Suite	\$699	18 hrs.	759298
New Supervisor/Manager- Course	\$299	6 hrs.	759299
Human Resource Department of One	\$299	6 hrs.	759327
Project Management - Intro	\$499	6 hrs.	759264
Partner with your Boss	\$49	6 hrs.	759326
Leading in a Time of Crisis	\$49	30 min.	759279

GENERATIVE AI (under 6 HRS.)

Claim your seat!

Course Title	Fees	Hrs.	Ref #
ChatGPT Prompts - Introduction Part-1	\$59	6 hrs.	759268
AI - Workplace Applications Part-2	\$108	6 hrs.	759270
Generative AI - Career Essentials Part-3	\$59	6 hrs.	759271
ChatGPT Ethics - Basic Part-4	\$59	6 hrs.	759272
Co-Pilot Essentials - Part-5	\$59	6 hrs.	759273

LEAN SIX SIGMA (under 24 HRS.)

Claim your seat!

Course Title	Fees	Hrs.	Ref #
Lean Six Sigma Yellow Belt	\$699	14 hrs.	759292
PM Ready	\$999	24 hrs.	758818

POWER SKILLS (under 24 HRS.)

Claim your seat!

Course Title	Fees	Hrs.	Ref #
Power Skills: Personal & Business Finance	\$99	9 hrs.	759294
Power Skills: Critical & Design Thinking	\$699	15 hrs.	759296
Power Skills: Professional Power Skills	\$99	9 hrs.	759295
Power Skills: Business Acumen - Think like a Boss	\$99	6 hrs.	759293
Power Skills: Collaboration at Work	\$199	6 hrs.	759276

Register now!

Micro LEARNING COURSES (Complete in 1- Day)

DRONES (under 16 HRS.)

Claim your seat!

Course Title	Fees	Hrs.	Ref #
Remote Pilot In Command FAA UAG	\$299	16 hrs.	758816
Drone Business Foundations: Venture	Coming Soon	6 hrs.	TBA

HEALTHCARE (under 6 HRS.)

Claim your seat!

Course Title	Fees	Hrs.	Ref #
Basic Life Support	\$100	4.5 hrs.	757386
Domestic Violence	\$27	2 hrs.	757402
Florida Laws & Rules - Nursing	\$27	2 hrs.	757412
Florida Laws & Rules - Respiratory	\$27	2 hrs.	757414
HIV/AIDS	\$40	4 hrs.	757416
Prevention of Medical Errors	\$27	2 hrs.	757417
TB/OSHA/Hepatitis	\$60	6 hrs.	757420

OSHA SAFETY

Claim your seat!

Course Title	Fees	Hrs.	Ref #
OSHA Safety w/Forklift Simulation	Coming Soon	15hrs.	EDC0733

SROI (under 6 HRS.)

Claim your seat!

Course Title	Fees	Hrs.	Ref #
SROI Introduction	\$99	30 min.	758851
SROI Essentials	\$299	3 hrs.	758845
SROI Value vs Impact	\$499	6 hrs.	758852

Register now!

BITE SIZE LEARNING (COMPLETE in 10 mins.)

SROI (under 10 minutes) (BITE Size Learning)

Course Title	Fees	Mins.	ID
SROI (Social Return On Investment) - Intro	\$0	10 Mins.	EdAp
AI for Beginners	\$0	10 Mins.	7Tap
Process Improvement - PDCA	\$49	10 Mins.	EdAp
Mindfulness - Meditation for the Workplace		10 mins.	

SROI (Social Return On Investment) -1 Intro	Tuition Free
SROI-2 Impact Measurement	Tuition Free

Skills in an easily digestible and informative format with relevant solutions you can immediately apply in your workplace.

SKILLGYM

Artificial Intelligence (AI) Digital Role Play



**WORKOUT AND BUILD YOUR
SOFT SKILLS MUSCLES**

Email to begin your workout



- Practice real life interpersonal situations
- Improve Skills through conversations
- Build habits that lead to positive results
- Boost confidence and self-awareness
- Discover conversation-based training
- Sales 101 Negotiations
- Time Management and Emotional Awareness
- Practice workplace professionalism

Collaboration at Work S EDE0223 6 HRS. \$199 Ref#759276

Learn healthy tools to collaborate with your team, coworkers, and supervisor. Uncover workplace personalities that disrupt workplace collaboration and proven tools for managing difficult situations.

Course covers:

Register now!

- Collaborate with Authenticity
- Complex Situations
- Four Employee Types
- Steering Others

Business Acumen S EDI0336 6 HRS. \$99 Ref#759293

Think like the boss! Learn the concepts of Business Acumen and gain an understanding of handling business opportunities and risks, quickly, leading to successful outcomes.

Course covers:

Register now!

- Define and Analyze
- Business Proficiency
- Financial Literacy
- Cultivating

Communication S EDC 0973 24 HRS. \$299

Communicating clearly and concisely in written and oral formats is critical to your professional success. From clarifying and structuring your ideas to designing the PowerPoint slides that will best complement them.

Course covers:

Register now!

- Effective Business Writing
- Effective Presentations
- Effective Public Speaking
- Effective Emails, Memo

Critical Thinking S EDC0149 15 HRS. \$699 Ref#759296

Design thinking is a continuous improvement process that helps create practical and creative ways to solve problems. Learn the benefits of critical and design thinking and master the tools to strategize and generate innovation.

Course covers:

Register now!

- Reasoning, and Logic
- Overcome Barriers
- Systemic Problem-Solving
- Reasoning Fallacies

Professional Career Skills S EDC0103 9 HRS. \$99 Ref#759295

Develop the professional skills every hiring manager is looking for! Set yourself apart by enhancing your professional and interpersonal skills.

Course covers:

Register now!

- Strengthen Relationship
- Solution focus
- Active Listening
- Unique perspectives

Finance S EDI0850 9 HRS. \$99 Ref#759294

Some people call Accounting the language of business. To be able to use this language, you need to have a good grasp of key financial concepts and fundamentals.

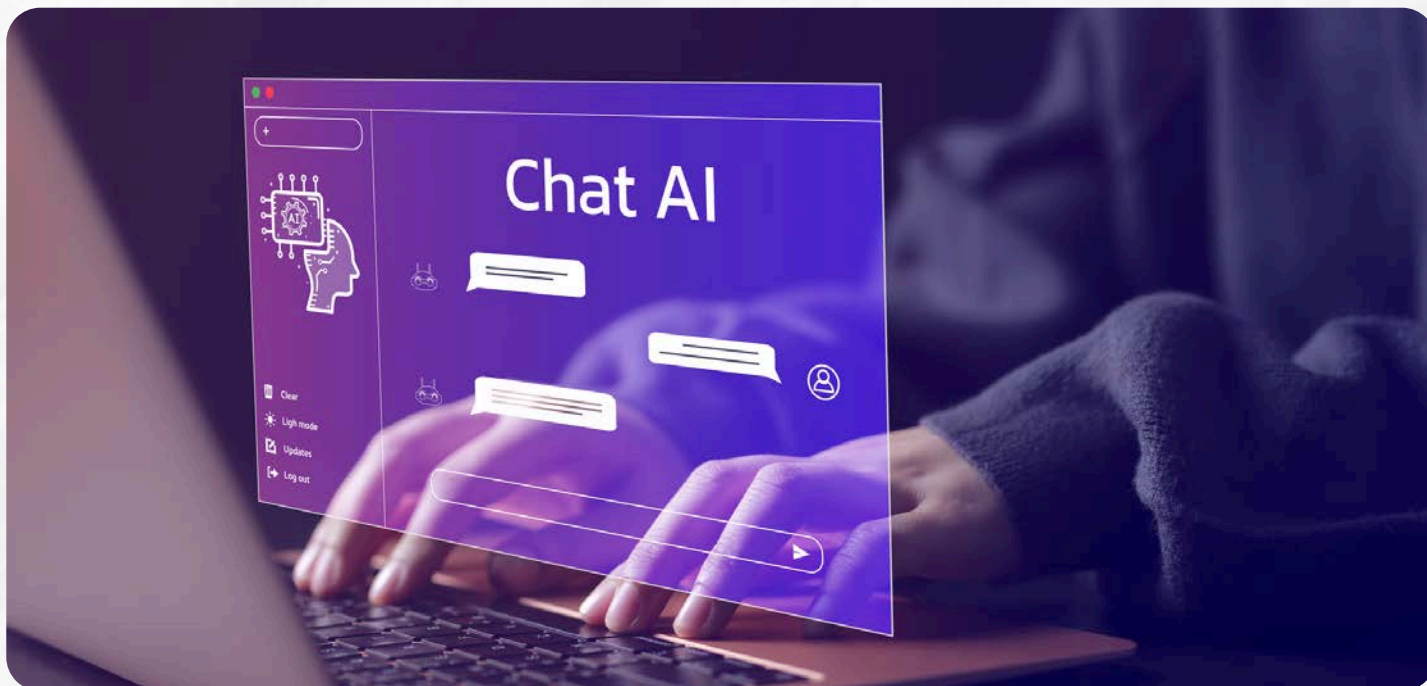
Course covers:

Register now!

- Accounting Equation
- Cash Flow Analysis
- Financial Statement
- Financial Planning

FLORIDA READY TO WORK SOFT SKILLS S

Interactive digital training focused on in-demand employability skills: professionalism, communicating effectively, teamwork and collaboration, thinking critically, and solving problems. For registration assistance email: CE@broward.edu



Artificial Intelligence (AI) for the Workplace 4 - Part Suite B

Embark on a journey of innovation and efficiency with this Micro-Learn short course series Integrating AI in the Workplace training program. Elevate your skills and thrive using real-world application, exercises to implement solutions in the workplace immediately. Course includes: AI Career Essentials, ChatGPT Prompts, Workplace applications and ethics.

EDE0487 **24 HRS.** **\$199**
MTWRF 05/27-07/13 24/7 WEB 759266

ChatGPT Prompts - Engineering Introduction Part-1 B

Welcome to the exciting world of ChatGPT prompts! In this course, you will learn the fundamentals of using ChatGPT to generate creative and engaging conversations. Whether you're new to the world of AI, a content creator, or simply curious about AI, this course will equip you with the necessary skills to interact effectively with ChatGPT.

EDE0299 **6 HRS.** **\$59**
MTWRF 06/01-06/15 24/7 WEB 759268

AI - Workplace Applications Part-2 B

Gain an understanding of how artificial intelligence (AI) is transforming the modern workplace. Whether you're a business professional, a manager, or an aspiring AI practitioner, this course will equip you with the knowledge and skills to leverage AI technologies for various workplace industries. (Business, Healthcare, Education, IT, etc.)

EDE0307 **6 HRS.** **\$108**
MTWRF 06/08-06/22 24/7 WEB 759270

Generative AI - Your Career Essentials Part-3 B

Learn foundational Generative AI knowledge and skills necessary for your career. Whether you're a student, a professional looking to learn and apply AI in the workplace, or simply curious about generative AI, this course will equip you with the essential tools and insights to kickstart your journey.

EDE0303 **6 HRS.** **\$59**
MTWRF 06/15-06/29 24/7 WEB 759271

ChatGPT Ethics - Basic Part-4 B

Delves into the ethical considerations surrounding the use of basic chatbot models, focusing on responsible and respectful interactions. Explore ethical AI communication to gain basic skills to engage with chatbots ethically.

EDE0395 **6 HRS.** **\$59**
MTWRF 06/22-07/06 24/7 WEB 759272

Introduction to Machine Learning O

T 14287 **24 HRS.** **\$135**
MTWRF 05/14 24/7 eLearning E2G
MTWRF 06/11 24/7 eLearning E2G
MTWRF 07/09 24/7 eLearning E2G

CoPilot for Microsoft Office 365 - Introduction

Gain an understanding of how CoPilot is transforming the modern workplace.

EDI0280 **6HRS.** **\$59**
MTWRF 06/29-07/13 24/7 WEB 759273

Artificial Intelligence for HR Professionals O

In Artificial Intelligence for HR Professionals, you will learn about different kinds of artificial intelligence (AI), including machine learning, deep learning, and generative AI.

ME **3 HRS.** **\$79**
MTWRF 05/14 24/7 eLearning ME

Artificial Intelligence for Marketing Professionals O

In Artificial Intelligence for Marketing Professionals, you will learn about different kinds of artificial intelligence (AI), including machine learning, deep learning, and generative AI.

ME **3 HRS.** **\$79**
MTWRF 05/14 24/7 eLearning ME

Click on the "Course Title" to **Register** or browse additional course details

Click on the "Course Title" to Register or browse additional course details

Computer &
Technology

MCSA SQL

HTML 5 JavaScript

ASP.NET WVC 3

Web Developer \$59k/yr*

Microsoft 365 Certified O

Get started with Microsoft 365 and prepare for the Fundamentals certification exam. This course introduces you to Microsoft 365 core services and features, covering cloud concepts, security, compliance, and pricing models. This course provides the perfect introduction to Microsoft 365 and its business benefits.

EDE 0450	24HRS.	\$999
MTWTR 05/13-06/20 24/7	WEB	758848

Computer Skills for the Workplace O

Learn step-by-step instructions to create Word documents, Excel spreadsheets, and PowerPoint presentations. Perform everyday tasks in each program: work with a flyer, a budget, and a presentation. This course provides you with a basic proficiency. Microsoft Office skills are important skills to have in any profession or workplace.

EDI 0540	24 HRS.	\$135
MTWRF 05/14 24/7	WEB	E2G
MTWRF 06/11 24/7	WEB	E2G
MTWRF 07/09 24/7	WEB	E2G

Photoshop Introduction O

Whether you are a photographer, digital illustrator, graphic designer, or someone who wants to alter old family photos, you need to learn Adobe Photoshop. The Photoshop Creative Cloud course is filled with easy-to-follow, detailed step-by-step instructions that teach you how to edit and manipulate images and create basic compositions.

EDE 0127	24 HRS.	\$135
MTWRF 05/14 24/7	WEB	E2G
MTWRF 06/11 24/7	WEB	E2G
MTWRF 07/09 24/7	WEB	E2G

Microsoft Excel-Pivot Tables O

Discover advanced techniques for pivot tables, like creating Timelines, calculated fields, and calculated items. You'll learn how to use Excel's Table function to efficiently manage changes to the pivot table's source data in order to avoid reporting mistakes when data is added or deleted.

EDI 0615	24 HRS.	\$135
MTWRF 05/14 24/7	WEB	E2G
MTWRF 06/11- 24/7	WEB	E2G
MTWRF 07/09 24/7	WEB	E2G

IC3 Digital Literacy GS5 O

Learn literacy skills needed in today's tech-driven society. Discover the key topics based on learning objectives covered on the IC3 Digital Literacy Certification exams. The IC3 Certification provides students with a global, industry-recognized credential for employment.

EDI 0675	60 HRS.	\$545
MTWRF 05/14 24/7	eLearning	E2G
MTWRF 06/11 24/7	eLearning	E2G
MTWRF 07/09 24/7	eLearning	E2G

Microsoft Certified: Azure Administrator O

You will learn to manage Azure subscriptions and resources, implement and manage storage, deploy and manage virtual machines (VMs), configure and manage virtual networks, and manage identities.

EDI 0656	60 HRS.	\$1,995
MTWRF 05/14 24/7	eLearning	E2G
MTWRF 06/11 24/7	eLearning	E2G
MTWRF 07/09 24/7	eLearning	E2G

Microsoft Access Certification Training O

Learn how to use Microsoft PowerPoint 2010 to create exciting slide presentations that include SmartArt, multimedia, animation, sound, charts, clip art, and hyperlinks.

EDI 0615	90 HRS.	\$595
MTWRF 05/14 24/7	WEB	E2G
MTWRF 06/11 24/7	WEB	E2G
MTWRF 07/09 24/7	WEB	E2G

* Median salary in Broward County based on Lightcast, 2024

Adobe Video Design O

Prepare for the Adobe Certified Professional in Video Design exam by mastering Adobe Premiere Pro and Photoshop. Gain the skills needed to edit videos professionally and become a certified video design expert.

EDE 0772	45 HRS.	\$1,495.00
TR 06/12-08/05 6:00pm-9:00pm	WEB	758850

Excel (MOS) Microsoft Office Specialist B

If your organization uses lists of any kind, you need to know how to use Microsoft Excel. Earning Microsoft Office Specialist Excel Expert certification sets your professional skill set apart from other Excel users. The course will prepare you for the Microsoft Office Specialist: Microsoft Excel Expert exam.

EDC0183	70 HRS.	\$999
MWF 05/07-05/23 24/7	WEB	758878

Microsoft Office Specialist (MOS) Associate Certification Training O

Learn how to use Microsoft PowerPoint 2010 to create exciting slide presentations that include SmartArt, multimedia, animation, sound, charts, clip art, and hyperlinks.

EDI 0615	245 HRS.	\$1,695
MTWRF 05/14 24/7	eLearning	E2G
MTWRF 06/11 24/7	eLearning	E2G
MTWRF 07/09 24/7	eLearning	E2G

Microsoft Office Specialist (MOS) Expert Certification Training B

This in-depth course will prepare you to sit for and pass the Microsoft Office Specialist (MOS) certification exams for Word, Excel, PowerPoint, Access, and Outlook and earn your Microsoft Office Specialist (MOS) Expert Certification.

EDI 0860	335 HRS.	\$2,295
MTWRF 05/14 24/7	eLearning	E2G
MTWRF 06/11 24/7	eLearning	E2G
MTWRF 07/09 24/7	eLearning	E2G

PowerPoint for Business O

As technology continues to change the way that we engage in business communications, the art of presenting has also undergone a shift. Learn practical tips and examples for mapping the presentation, incorporating research, using templates, selecting visual elements, and delivering the presentation.

EDI 0860	3 HRS.	\$79
MTWRF 05/14 24/7	eLearning	ME
MTWRF 06/11 24/7	eLearning	ME
MTWRF 07/09 24/7	eLearning	ME

Microsoft Project Introduction O

Learn to effectively plan, implement, and control projects using Microsoft Project. Master the basics to create and share a project schedule, track costs and resources, produce reports, and resolve problems to keep your projects on track.

EDI 0615	24 HRS.	\$135
MTWRF 05/14 24/7	WEB	E2G
MTWRF 06/11 24/7	WEB	E2G
MTWRF 07/09 24/7	WEB	E2G

QuickBooks Online Basics O

Introductory-level course designed to build a foundation of essential skills in QuickBooks® Online. Learners will develop a greater understanding of the basic bookkeeping and accounting functions that the software enables.

EDI 0860	5 HRS.	\$99
MTWRF 05/14 24/7	eLearning	ME
MTWRF 06/11 24/7	eLearning	ME
MTWRF 07/09 24/7	eLearning	ME

Click on the "Course Title" to Register or browse additional course details

Click the “**Enrollment**” button below to browse courses, tuition and additional details



PAY TODAY, START TODAY!



Steps to share your accomplishments with colleagues and employers

- Step 1: Select and Enroll in a Micro- Credential course.
- Step 2: Complete Requirements and receive Micro-Credential.
- Step 3: Earn your Badge.
- Step 4: Share your Micro-Credential & Digital Badge on: LinkedIn and other social media platforms, Resume, embed in your e-mail signature.



Enrollment
IT & COMPUTERS

Enrollment
ALLIED HEALTH

Enrollment
BUSINESS/PROFESSIONAL

Click the “**Enrollment**” button above to browse courses, tuition and additional details
Register, pay and begin immediately

- AI & Machine Learning Certification
- Certified Information Systems Auditor
- Certified Information Security Manager
- CEH (v12)- Certified Ethical Hacker
- Certified AWS Developer
- Certified AWS Cloud Practitioner
- CompTIA A+, N+, Security +
- Computer Hacking Forensics Investigator
- Cyber Security Expert
- Full Stack Developer - MEAN Stack
- Video Design Professional

- Behavior Technician
- Dialysis Technician
- Healthcare IT Technician
- Medical Billing and Coding
- Medical Lab Assistant
- Medical Office Manager
- Medical Transcriptionist
- Physical Therapy Aide
- Sterile Processing
- Surgical Technologists
- Veterinary Assistant

- AutoCAD Certification
- Business Operations Specialist
- Certified Brand Strategist
- Certified Business Analysis Professional
- Certified Financial Health Counselor
- Florida Real Estate License
- Insurance Accredited Claims Adjuster
- Lean Six Sigma Belt series
- Nonprofit Manager
- Revit Certification
- Sales Manager
- SHRM

ONLINE: We bring courses to you. Anytime, anywhere
3-Month Pass* | \$349 for 3 Online Courses within 3 months
4-Month Pass* | \$399 for 4 Online Courses within 4 months
*Pass can be used by same or different student. Info: ce@broward.edu



EARN COLLEGE CREDIT FOR WHAT YOU ALREADY KNOW - If you have obtained industry certifications or licensures that align with Broward College's degree programs, you can earn college credits. For more information about Credit for Prior Learning contact cpl@broward.edu

Professional Credentials include:



Click on the "Course Title" to **Register** or browse additional course details



* Median salary in Broward County based on Lightcast, 2025

CompTIA Tech + Certification O

Prepare for a successful start in the IT field with the CompTIA Tech+ certification course. CompTIA Tech+ provides the tech literacy essential for today's digital economy, making it the perfect starting point for anyone looking to enhance their career with technology skills. Tailored for those without prior experience, this comprehensive program covers essential areas of information technology, including PC hardware, operating systems, applications, networking, programming, databases, and security. By acquiring this foundational knowledge, you will develop your IT skill set and build a solid base for further certification exams such as A+, Network+, and Security+.

EDI 0435 **40 HRS.** **\$895**
MTWRF 05/13-08/05 24/7 WEB 758738

CompTIA A+ O

This course will prepare you for CompTIA A+ certification. The CompTIA A+ Certification Exam covers mobile devices, networking technology, hardware, virtualization and cloud computing and network troubleshooting.

EDI 0298 **200 HRS.** **\$2,095**
TR 05/15-08/12 06:00pm-9:00pm CEN 758879
MWF 06/09-08/08 06:00pm-9:00pm WEB 758881

CompTIA Network+ O

This course utilizes a Network+ lab simulator so you can have the opportunity to have hands-on experience working with networking configurations and troubleshooting instances, a key component to the CompTIA Network+ N10-008 certification exam.

EDC 0991 **110 HRS.** **\$1,895**
MTWRF 05/14 24/7 eLearning E2G
MTWRF 06/11 24/7 eLearning E2G
MTWRF 07/09 24/7 eLearning E2G

CompTIA Security+ O

Successful completion of this course will allow you to assess an organization's security strength while recommending and implementing appropriate security solutions based on those assessments. Learners will be able to monitor and secure various security environments like cloud, mobile, and IoT (Internet of Things)

EDE 0304 **85 HRS.** **\$1,995**
MTWRF 05/14 24/7 eLearning E2G
MTWRF 07/09 24/7 eLearning E2G

AWS Technical Essentials - Intro B

Gain an understanding of AWS (Amazon Web Services) management console, AWS security measures, storage, and database options. This introductory course will provide a good understanding, in line with AWS syllabus, will help you become familiar with the AWS platform.

EDI 0622 **40 HRS.** **\$699**
TR 06/14-07/05 06:00pm-8:00pm CEN 758826

Cybersecurity B

Cybersecurity, also known as Information Security, is the protection of data and personally identifiable information from malicious attacks, theft, and destruction. Failures of cybersecurity policies, both in large corporations and governmental agencies, have earned significant visibility and negative publicity in recent months and years.

EDE 0808 **40 HRS.** **\$499**
MTWRF 05/14 24/7 eLearning ME
MTWRF 06/11 24/7 eLearning ME
MTWRF 07/09 24/7 eLearning ME

Watch how a Comp TIA A+ Certification can boost your career in IT



Course demo
Scan/Click

Coding O

Sometimes referred to as software of computer programming, coding is a method of communicating with computers to perform specific tasks.

Full Stack Software Developer O

EDI 1000 **650 HRS.** **\$5,495**
MTWRF 05/14 24/7 eLearning E2G
MTWRF 06/11 24/7 eLearning E2G
MTWRF 07/09 24/7 eLearning E2G

Database Management O

Database management allows businesses with a large number of datasets to store, organize and retrieve data needed from a computer.

Oracle SQL and PL/SQL + Python Developer + Java Programmer O

EDI 1000 **375 HRS.** **\$2,595**
MTWRF 05/14 24/7 eLearning E2G
MTWRF 06/11 24/7 eLearning E2G
MTWRF 07/09 24/7 eLearning E2G

Oracle SQL and PL SQL Developer O

EDI 1000 **120 HRS.** **\$995**
MTWRF 05/14 24/7 eLearning E2G
MTWRF 06/11 24/7 eLearning E2G

EMERGING TECHNOLOGIES O

A Manager's Guide to Information Technology

This course is designed to help managers develop a solid understanding of the basic concepts and technologies that they will encounter in the information technology field. Learners in this course will expand their knowledge of IT through games, videos, interactive exercises, quizzes, and other engaging content.

EDI 0860 **10 HRS.** **\$199**
MTWRF 05/14 24/7 eLearning ME
MTWRF 06/11 24/7 eLearning ME
MTWRF 07/09 24/7 eLearning ME

Additional Emerging Technology Courses \$79/ea. - 3 HRS.

- **Manager's Guide to Superior Customer Service**
- **Manager's Guide to Cloud Computing and Cybersecurity**

EDI 0860 **3 HRS.** **\$79**
MTWRF 05/14 24/7 eLearning ME
MTWRF 06/11 24/7 eLearning ME
MTWRF 07/09 24/7 eLearning ME

Click on the "Course Title" to **Register** or browse additional course details

Click on the "Course Title" to **Register** or browse additional course details

Entrepreneurship Certificate

Explore the different aspects of entrepreneurship and how entrepreneurs create and establish successful new ventures. Learn what types of resources are available to aspiring entrepreneurs, and where can you find them. Gain answers to important questions and essential resources for success.

EDI 0820	25 HRS.	\$599
MTWRF 05/14	24/7	eLearning ME
MTWRF 06/11	24/7	eLearning ME
MTWRF 07/09	24/7	eLearning ME

Accounting and Finance for Entrepreneurs

Understand financial accounting basics, financial statements, and key issues in finance, broadly defined as financial or monetary activity that involves a company.

EDI 0820	5 HRS.	\$129
MTWRF 05/14	24/7	eLearning ME
MTWRF 06/11	24/7	eLearning ME
MTWRF 07/09	24/7	eLearning ME

Business Law for Entrepreneurs

Learn relevant business laws that can make or break success. This course covers basic laws for entrepreneurs, legal structures for a new venture, intellectual property, employment law, contracts, government regulation, and personal & real property.

EDI 0820	5 HRS.	\$129
MTWRF 05/14	24/7	eLearning ME
MTWRF 06/11	24/7	eLearning ME
MTWRF 07/09	24/7	eLearning ME

Strategic Marketing for Entrepreneurs

Learn strategic marketing that entrepreneurs face while starting a new venture or business and highlights market acceptance during stages of the entrepreneurial process.

EDI 0820	5 HRS.	\$129
MTWRF 05/14	24/7	eLearning ME
MTWRF 06/11	24/7	eLearning ME
MTWRF 07/09	24/7	eLearning ME

Workplace Law Essentials Value Suite

Earn the fundamentals of employment law, workers compensation law, and the laws protecting both employees and employers in a straightforward, easy-to-understand way.

EDI 0820	48 HRS.	\$230
MTWRF 05/14	On-Demand with Instructor	E2G
MTWRF 06/11	On-Demand with Instructor	E2G
MTWRF 07/09	On-Demand with Instructor	E2G

Small Business Management Introduction

Learn the basics of running a successful business, including planning, finance, HR, marketing, and customer care, to effectively tackle problems and seize opportunities.

EDI 0820	3 HRS.	\$79
MTWRF 05/14	24/7	eLearning ME
MTWRF 06/11	24/7	eLearning ME
MTWRF 07/09	24/7	eLearning ME

Advertising & Outreach Specialist

Learn how to create advertising pieces for print and digital media. This course will teach you to develop and execute all stages of an advertising campaign, from writing ad copy to story-boarding and measurement.

EDI 0615	100 HRS.	\$1,295
MTWRF 05/14	24/7	eLearning E2G
MTWRF 06/11	24/7	eLearning E2G
MTWRF 07/09	24/7	eLearning E2G

Leadership Suite

Learn essential skills for successful leadership, even if you're not in a leadership role yet. Learn to make decisions based on the information you have and deal with difficult bosses and co-workers.

EDI 0820	96 HRS.	\$480
MTWRF 05/14	On-Demand WEB	E2G
MTWRF 06/11	On-Demand WEB	E2G
MTWRF 07/09	On-Demand WEB	E2G

Budgeting and Financial Analysis for Small Businesses

Creating a budget and analyzing financial data is crucial for small business success. Learn how to prepare budgets, analyze variances, and interpret financial statements

EDI 0820	5 HRS.	\$99
MTWRF 05/14	24/7	eLearning ME
MTWRF 06/11	24/7	eLearning ME
MTWRF 07/09	24/7	eLearning ME

Small Business Marketing

Learn the basics of small business marketing, including social media, content marketing, and search engine optimization. This course helps you effectively promote your products/services and reach the right audience on a limited budget.

EDI 0820	3 HRS.	\$79
MTWRF 05/14	24/7	eLearning ME
MTWRF 06/11	24/7	eLearning ME
MTWRF 07/09	24/7	eLearning ME

Project Management for Small Businesses

Small business management involves overseeing both small and large projects. Not all projects require extensive planning, but project management techniques can help teams of all sizes meet their goals more efficiently

EDI 0820	3 HRS.	\$79
MTWRF 05/14	24/7	eLearning ME
MTWRF 06/11	24/7	eLearning ME
MTWRF 07/09	24/7	eLearning ME

Leading Teams

This introductory-level course for managers or anyone interested in leading teams, addresses the key issues surrounding leadership in a team environment.

EDI 0820	5 HRS.	\$79
MTWRF 05/14	24/7	eLearning ME
MTWRF 06/11	24/7	eLearning ME
MTWRF 07/09	24/7	eLearning ME

Earn your Micro Credentials & **DIGITAL BADGE**



Steps to share your accomplishments with colleagues and employers

- Step 1: Select and Enroll in a Micro- Credential course.
- Step 2: Complete Requirements and receive Micro-Credential.
- Step 3: Earn your Badge.
- Step 4: Share your Micro-Credential & Digital Badge on: LinkedIn and other social media platforms, Resume, embed in your e-mail signature.

Click on the "Course Title" to **Register** or browse additional course details



Click on the "Course Title" to **Register** or browse additional course details

Small Business Management

Gain an understanding of the most critical areas in managing and operating your own small business.

EDI 0820		30 HRS.		\$499
MTWRF	05/14	24/7	eLearning	ME
MTWRF	06/11	24/7	eLearning	ME
MTWRF	07/09	24/7	eLearning	ME

Business Writing

Develop powerful written documents that immediately draw readers in and keep them motivated to continue until your very last, well-chosen word.

EDI 0615		24 HRS.		\$135
MTWRF	05/14	24/7	WEB	E2G
MTWRF	06/11	24/7	WEB	E2G
MTWRF	07/09	24/7	WEB	E2G

Supervision & Management

Master the basics of communication to become a more effective manager or supervisor. Discover various traits and how they impact your ability to get the job done.

EDI 0615		24 HRS.		\$135
MTWRF	05/14	24/7	WEB	E2G
MTWRF	06/11	24/7	WEB	E2G
MTWRF	07/09	24/7	WEB	E2G

Business Operations Specialist

Learn the fundamentals of business management and operational planning with a veteran supply chain manager. You will gain key operational skills, including risk management and quality control.

EDI 0910		200 HRS.		\$1,895
MTWRF	05/14	24/7	eLearning	E2G
MTWRF	06/11	24/7	eLearning	E2G
MTWRF	07/09	24/7	eLearning	E2G

Business Analysis

Learn to identify needs and requirements, and then designing and executing solutions to business problems.

EDI 0820		25 HRS.		\$599
MTWRF	05/14	24/7	eLearning	ME
MTWRF	06/11	24/7	eLearning	ME
MTWRF	07/09	24/7	eLearning	ME

Nonprofit Starting Your Own Organization

Learn key steps in getting a nonprofit off the ground, including incorporating your organization, applying for tax-exempt status and drafting a business plan.

EDI 0834		4 HRS.		\$79
MTWRF	05/14	24/7	eLearning	ME
MTWRF	06/11	24/7	eLearning	ME
MTWRF	07/09	24/7	eLearning	ME

Technical Writing

Learn the secrets of successful technical writers, including technical writing conventions, interviewing skills, desktop publishing, and formatting techniques.

EDI 0615		24 HRS.		\$135
MTWRF	05/14	24/7	WEB	E2G
MTWRF	06/11	24/7	WEB	E2G
MTWRF	07/09	24/7	WEB	E2G

Leadership in a Nonprofit Organization

Examine leadership theories focused in the nonprofit sector, including the leadership shortage and possible solutions.

EDI 0834		3 HRS.		\$99
MTWRF	05/14	24/7	eLearning	ME
MTWRF	06/11	24/7	eLearning	ME
MTWRF	07/09	24/7	eLearning	ME

QuickBooks Certified User

Develop your QuickBooks skills with this comprehensive prep course for the QuickBooks Certified User exam. Learn how to manage company files, perform bookkeeping tasks, create reports, and handle payroll within QuickBooks. Through practical exercises and guided lessons, you will gain the expertise needed to efficiently use QuickBooks and pass the certification exam.

EDI 0029		24HRS.		\$999
MTWRF	05/28-06/30	24/7	Online	758849

Payroll Professional Certified

Gain a solid understanding of advanced payroll skills necessary for experienced payroll professionals seeking compliance training, professional development, or CPP certification preparation.

EDI 0107		36 HRS.		\$699
MW	07/07-08/13	6:30pm-9:30pm	Remote	758836

Personal Finance

Gain control over the financial impact of your choices with tools that are useful, realistic, and easy to work into your regular routine.

EDI 0615		24 HRS.		\$135
MTWRF	05/14	24/7	WEB	E2G
MTWRF	06/11	24/7	WEB	E2G
MTWRF	07/09	24/7	WEB	E2G

Finance Essentials Certificate

Learn how to calculate key financial management indicators, assess your organization's financial health by reviewing balance sheets, income statements, and statements of cash flow.

EDI 0000		19 HRS.		\$399
MTWRF	05/14	24/7	eLearning	ME
MTWRF	06/11	24/7	eLearning	ME
MTWRF	07/09	24/7	eLearning	ME

Bookkeeper Certified

Acquire the practical knowledge necessary to setup and maintain bookkeeping records: analyzing and recording transactions, balance sheets, general entry, and more.

EDI 0800		140 HRS.		\$2,195
MTWRF	05/14	24/7	eLearning	ME
MTWRF	06/11	24/7	eLearning	ME
MTWRF	07/09	24/7	eLearning	ME

Nonprofit Organization Budgeting

Gain an understanding of the uses and functions of budgets and the relationship between strategic and tactical budgeting.

EDI 0831		3 HRS.		\$79
MTWRF	05/14	24/7	eLearning	ME
MTWRF	06/11	24/7	eLearning	ME
MTWRF	07/09	24/7	eLearning	ME

Nonprofit Organizations Fundraising

To help finance operating budgets, nonprofits must raise money every year and manage special projects to facilitate this.

EDI 0833		4 HRS.		\$150
MTWRF	05/14	24/7	eLearning	ME
MTWRF	06/11	24/7	eLearning	ME
MTWRF	07/09	24/7	eLearning	ME

Income Tax Prep

Attain the ability to prepare income tax returns for yourself and others. This comprehensive step-by-step program covers how to prepare individual income tax returns, understand current tax laws, and discover available tax software to process returns.

EDE 0718		15HRS.		\$149
TR	07/15-07/29	6:30pm-9:30pm	Remote	758844

Click on the "Course Title" to **Register** or browse additional course details

Business

Business
Development

Career/Power Skill

Start-up Now
Accelerator

Mini MBA

Business Manager \$87k/yr*

* Median salary in Broward County based on Lightcast, 2024



IN PARTNERSHIP WITH
SHRM[®]
BETTER WORKPLACES
BETTER WORLD™

82% of HR
Executives agree
that SHRM
certification adds
the credibility
needed to advance
your career in HR.



Course demo
Scan/Click

Human Resources: SHRM CP/SCP - Certification B

SHRM Certified Professional (SHRM-CP) or SHRM Senior Certified Professional (SHRM-SCP) credential establishes you as a recognized expert in the HR field. Course prepares you for the SHRM-CP and SHRM-SCP certification examinations, built upon one singular body of applied skills and knowledge designed to elevate the HR profession around the world. The SHRM Learning System in digital format is included.

EDI 0913 **36 HRS.** **\$1,299**
TR 05/06-06/12 6:00pm-9:00pm Remote 758730

Human Resources Talent Management B

Learn topics: the hiring process, how to locate quality employees in a competitive labor market, how to attract and retain top talent, employee rights and the legal side of Human Resources.

EDI 0615 **72 HRS.** **\$365**
MTWRF 05/14 24/7 WEB E2G
MTWRF 06/11 24/7 WEB E2G
MTWRF 07/09 24/7 WEB E2G

HR Department of One B

Heading an HR Department of One (HR DOO) is a daunting task. Time is short; resources are limited; and constantly shifting priorities can be a major issue. This course is designed for the newly appointed sole HR managers. This position requires understanding of management and organization skills as well as demonstrating fairness, discretion, and ethics. In this course, you will learn how to measure your current practices, build a set of realistic best practices, and map those practices to what is achievable in your organization.

EDI 0347 **6 HRS.** **\$299**
MTWRF 06/26-07/10 WEB 759327

For additional Human Resource Programs

[Browse for Additional HR Courses](#)

Earn your Micro Credentials & **DIGITAL BADGE**

Social Return on Investment- TEN PART SERIES B

Learn how to measure the value of social change and the social return on investment generated by our program, organization or project.

This series will introduce you to social return on investment and how it can help your business. Topics include Impact Measurement, the Seven Principles of SROI, who can use SROI, measuring impact, and many more. (10 part series), Email ce@broward.edu to unlock your Tuition Free program

EDE 0408	Free	05/14 - 08/07	On-Demand	Duration
Courses				
Series 1: SROI – Intro				2 mins
Series 2: SROI – Impact Measurement				2 mins
Series 3: SROI – What is Social Return on Investment				3 mins
Series 4: SROI – Seven Principals of SROI				3 mins
Series 5: SROI – Help Me				3 mins
Series 6: SROI – Who Can Use SROI				5 mins
Series 7: SROI – Analysis				3 mins
Series 8: SROI – What is Value				4 mins
Series 9: SROI – Calculate to Social Benefits				6 mins
Series 10: SROI – Measuring Impact				5 mins

**START
TODAY!**
COMPLETE IN
6 MONTHS



Course demo
Scan/Click

Social Return on Investment – Intro S

Explore the principles and methodologies of Social Return on Investment (SROI) and their application in decision-making and reporting. This course is tailored for those seeking insights into how SROI contributes to value creation.

EDI 0846 **30 MIN.** **\$99**
MTWRF 07/08-08/04 WEB 758851

SROI Essentials S

Explore the Social Return on Investment (SROI) framework in our Essentials program. Learn to measure value beyond finances, addressing broader societal, environmental, and economic impacts. Idea for those seeking to understand SROI's role in fostering change, this program also paves the way for advanced SROI Practitioner training.

EDI 0848 **3 HRS.** **\$299**
MTWRF 07/15-08/04 WEB 758845

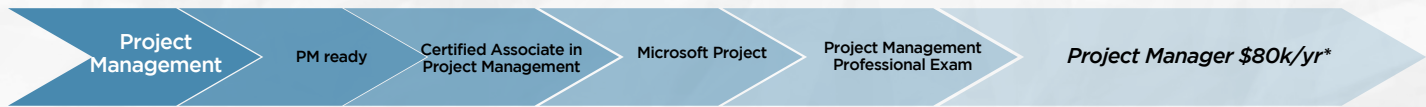
SROI: Social Value vs Social Impact – Intro S

Explore SROI in our Social Value vs. Social Impact course. Learn the distinctions between the two and utilize our Social Impact Calculator for project assessments. Perfect for individuals aiming to understand SROI, drive change, and prepare for Practitioner training. Also suitable for those focused on enhancing organizational value.

EDI 0849 **6 HRS.** **\$499**
MTWRF 07/22-08/05 WEB 758852

Click on the "Course Title" to **Register** or browse additional course details

Click on the "Course Title" to **Register** or browse additional course details



* Median salary in Broward County based on Lightcast, 2025

Project Management Ready **S**

Start a career in project management with the PMI Project Management Ready™ certification. During this program, students will be immersed into the project management process to learn concepts and the industry. With the PMI Project Management Ready certification, students can immerse themselves in the project management industry and professionals while gaining a competitive edge. Students will receive voucher to take the PMI certification.

EDI 0332	24 HRS.	\$999
M 06/02-07/21 6:00pm-9:00pm	WEB	758818
MTWTF 07/14-08/13 24/7	CEN	758843

Project Management Professional - CAPM/PMP Preparation **O**

Build your career! Project Management is an essential skill for working professionals. This program provides 35 contact hours of formal education as required by the Project Management Institute, Inc. (PMI), for eligibility for the Project Management Professional (PMP®), as well as for the Certified Associate Project Manager (CAPM®) certification. It is an online course designed for students that wish to secure either credential.

EDI 0915	250 HRS.	\$2,575
MTWRF 05/14 24/7	WEB	E2G
MTWRF 06/11 24/7	WEB	E2G
MTWRF 07/09 24/7	WEB	E2G

Microsoft Project **O**

Learn to effectively plan, implement, and control projects using Microsoft Project 2019/Office365. This course will help you master the basics to create and share a project schedule, track costs and resources, produce reports, and resolve problems to keep your projects on track.

EDI 0615	24 HRS.	\$135
MTWRF 05/14 24/7	WEB	E2G
MTWRF 06/11 24/7	WEB	E2G
MTWRF 07/09 24/7	WEB	E2G

Agile Certified Practitioner (PMI-ACP) **O**

The PMI-ACP is PMI's fastest growing certification, and it's no wonder. Organizations that are highly agile and responsive to market dynamics complete more of their projects successfully than their slower moving counterparts 75% versus 56% as shown in PMI Pulse of the Profession's report.

EDI 0926	60 HRS.	\$1,595
MTWRF 05/14 24/7	eLearning	E2G
MTWRF 06/11 24/7	eLearning	E2G
MTWRF 07/09 24/7	eLearning	E2G

Risk Management **O**

When it comes to cybersecurity projects, there are many knowns and unknowns. Luckily, risk management professionals plan for all potential risks during a project's lifecycle. Learn to identify, assess, and mitigate project risks.

EDI 0760	50 HRS.	\$695
MTWRF 05/14 24/7	WEB	E2G
MTWRF 06/11 24/7	WEB	E2G
MTWRF 07/09 24/7	WEB	E2G

Business Acumen PDU Bundle **O**

Learn conflict resolution, emotional intelligence, finance and budgets.

EDI 0615	11 HRS.	\$249
MTWRF 05/14 24/7	eLearning	ME
MTWRF 06/11 24/7	eLearning	ME
MTWRF 07/09 24/7	eLearning	ME

Lean Six Sigma Belt Series **S**

Learn lean business concepts, strategies, tools and techniques to achieve desired quality outcomes for your organization. Yellow belt, Green belt, and Black belts are evidence of quality credentials. Gain a high-level understanding of the DMAIC methodology (Define, Measure, Analyze, Improve, and Control).

Click on the "Course Title" to **Register** or browse additional course details

LEAN SIX SIGMA WHITE BELT **O**

EDI 0620	7 HRS.	\$699
MTWRF 06/01-07/06 24/7	WEB	759331



LEAN SIX SIGMA YELLOW BELT **O**

EDI 0653	14 HRS.	\$699
MTWRF 08/04-08/10 24/7		759292



LEAN SIX SIGMA GREEN BELT **B**

EDI 0619	40 HRS.	\$1,895
W 07/09-08/20 10:00Am-12:00pm	WEB	758837



LEAN SIX SIGMA BLACK BELT **O**

EDI 0832	40 HRS.	\$2,695
email ce@broward.edu to register		



Operation Management **O**

Explore the fundamental concepts and theories practitioners will need to successfully guide operations in manufacturing and service organizations. Specific tools, techniques, and methodologies are presented to show their applicability to operational strategies.

EDI 8080	10 HRS.	\$299
MTWRF 05/14 24/7	eLearning	ME
MTWRF 06/11 24/7	eLearning	ME
MTWRF 07/09 24/7	eLearning	ME

The Effective Manager's Toolbox **O**

There are a number of managerial factors that are vital in managing and leading. Becoming a better manager or leader is directly connected to how well you can master them. The Effective Manager's Toolbox is a suite of online modules designed to give managers a head start on managing issues correctly and professionally with less stress and fewer negative organizational circumstances.

EDI 0880	15 HRS.	\$299
MTWRF 05/14 24/7	eLearning	ME
MTWRF 06/11 24/7	eLearning	ME
MTWRF 07/09 24/7	eLearning	ME

Click on the "Course Title" to **Register** or browse additional course details

Click on the "Course Title" to **Register** or browse additional course details



* Median salary in Broward County based on Lightcast, 2024

Digital Marketing Certificate **B**

Digital marketing helps organizations promote and sell products and services through online marketing methods such as social media messaging, website ads, Facebook marketing campaigns, Google Adwords, and more. It's vital to develop a marketing strategy that keeps up with technology.

EDC 0287	30 HRS.	\$549
MTWRF 05/14 24/7	eLearning	ME

Marketing Certified Associate **O**

Earn your Marketing certification and master strategic issues, marketing methods and tactics, industry terminology, and best practices. This online and self-paced program provides comprehensive preparation for the Online Marketing Certified Associate (OMCA™) certification.

EDI 0796	36 HRS.	\$649
MTWRF 05/14 24/7	eLearning	ME
MTWRF 06/11 24/7	eLearning	ME
MTWRF 07/09 24/7	eLearning	ME

Marketing Your Business on the Internet **O**

Learn to incorporate SEO, advertising, email, social media, and more to develop an effective Internet marketing plan for your business even with little money to spend.

EDI 0615	24 HRS.	\$135
MTWRF 05/14 On-Demand	WEB	E2G
MTWRF 06/11 On-Demand	WEB	E2G
MTWRF 07/09 On-Demand	WEB	E2G

Advertising & Outreach Specialist **O**

Learn how to create advertising pieces for print and digital media. This course will teach you to develop and execute all stages of an advertising campaign, from writing ad copy to story-boarding and measurement.

EDI 0615	E2G	100 HRS.	\$1,295
MTWRF 05/14 On-Demand	WEB	E2G	
MTWRF 06/11 On-Demand	WEB	E2G	
MTWRF 07/09 On-Demand	WEB	E2G	

Web Analytics **O**

This course is designed to help learners develop a solid understanding of the basic concepts and techniques that they will encounter as practitioners in the web analytics field.

EDI 0615	3.5 HRS.	\$99
MTWRF 05/14 24/7	eLearning	ME
MTWRF 06/11 24/7	eLearning	ME
MTWRF 07/09 24/7	eLearning	ME

Google Ads **O**

This course will teach you how to navigate through the platform, set up and optimize campaigns, improve performance, apply advanced techniques, and analyze performance data.

EDI 0615	6 HRS.	\$99
MTWRF 05/14 24/7	eLearning	ME
MTWRF 06/11 24/7	eLearning	ME
MTWRF 07/09 24/7	eLearning	ME

Search Engine Optimization **O**

Learn how to leverage both content and technical features in order to increase ranking in search results while also learning about the latest tools to measure performance.

EDI 0615	3 HRS.	\$95
MTWRF 05/14 24/7	eLearning	ME
MTWRF 06/11 24/7	eLearning	ME
MTWRF 07/09 24/7	eLearning	ME

Effective Selling **O**

Discover how you can easily convert a potential customer into a long-term asset. This course will help you lay the groundwork for repeat business and your future success with knowledge, planning skills, communication techniques, and the understanding of human nature.

EDI 0615	24 HRS.	\$135
MTWRF 05/14 On-Demand	WEB	E2G
MTWRF 06/11 On-Demand	WEB	E2G
MTWRF 07/09 On-Demand	WEB	E2G

Sales Training Suite **O**

In good times or tough ones, companies never stop looking for sales representatives who can help them meet their financial goals.. This series will provide you with the tools you need to communicate effectively with clients as you build rapport and create an environment of trust. You'll also learn effective sales techniques that will help you convert new customers.

EDI 0615	72 HRS.	\$345
MTWRF 05/14 On-Demand	WEB	E2G
MTWRF 06/11 On-Demand	WEB	E2G
MTWRF 07/09 On-Demand	WEB	E2G

Sales Manager Certificate **O**

Master the theories behind effective sales management. The Sales Manager course consists of two parts, one focusing on the role of sales representative and the other on the role of sales management. Learn how to lead a sales team, how to create and implement a sales plan, how to identify and qualify prospects, and more.

EDI 0615	200 HRS.	\$1,995
MTWRF 05/14 On-Demand	WEB	E2G
MTWRF 06/11 On-Demand	WEB	E2G
MTWRF 07/09 On-Demand	WEB	E2G

Professional Sales Skills **O**

If you've always dreamed of becoming successful in sales, this course is exactly what you need. You'll learn how to turn prospects into buyers, how to provide proper customer service, how to develop a sales plan, and more! Today, there are no shortages of opportunities for skilled salespeople.

EDI 0615	3 HRS.	\$135
MTWRF 05/14 24/7	eLearning	ME
MTWRF 06/11 24/7	eLearning	ME
MTWRF 07/09 24/7	eLearning	ME

Paid Search (PPC) **O**

Explore search marketing, the search process, and the buying cycle. Learn how to set up a successful PPC account, how to set and measure goals, and how to optimize keyword usage using a variety of strategies. You will also examine components of effective ads and landing pages, how to optimize ad targeting, and when to use search or display advertising.

EDI 0615	4 HRS.	\$115
MTWRF 05/14 24/7	eLearning	ME
MTWRF 06/11 24/7	eLearning	ME
MTWRF 07/09 24/7	eLearning	ME

Click on the "Course Title" to **Register** or browse additional course details

Click on the "Course Title" to **Register** or browse additional course details

Mini "MBA" Five-Day Workshop - \$499

Immerse yourself in this one-of-a-kind program covering all the vital business skills you need to make sound business decisions. Learn to handle data, reduce risks and manage people, processes and new technology. Prepare yourself to innovate, strategize and lead with success. This hands-on, 5-day intensive course is different from all others and includes case studies, team exercises, self-assessments and videos. You'll create financial statements, worksheets and a SWOT analysis, and will participate in a business challenge simulation on the final day.

MTWRF 05/01-08/30 24/7 WEB TBA

KEY COURSE BENEFITS

- Communicate and collaborate effectively
- Improve how you manage people
- Speak Finance
- Strategize and Manage risks
- Enhance creativity and innovation
- Sharpen your leadership skills

Business Challenge SIMULATION PROJECT

WHO SHOULD ATTEND

Business professionals who need a well-rounded, practical set of business acumen skills.

This workshop does not award a degree.

For information email: ce@broward.edu

LEAN Process Improvement Delivering More with Less

Apply LEAN fundamentals to reduce inefficiencies, lower costs and increase revenue. LEAN process improvement tools offer simple fixes that will change your thinking, improve your operations and deliver quick solutions. In this course, you'll discover there are 7 types of waste and several methods to eliminate. You will learn to map the customer value stream and determine which activities add value to the customer and which do not. A highly interactive case study will cement the learning as you participate in repairing a broken process with instructor guidance utilizing LEAN tools and principles.

W 05/01-08/30 6:00pm-7:00pm CEN Online

WHAT YOU WILL COVER

- Understanding LEAN methodology concepts
- Mapping the customer value stream
- Identifying LEAN metrics
- Discerning the connection between LEAN and Six Sigma
- Grasping the 7 types of waste
- Implementing LEAN tools to decrease process waste

WHO SHOULD ATTEND

Anyone looking to project a positive image and distinctive presence professionally.

For information email: ce@broward.edu

Partnering with Your Boss - \$49

Become a proactive partner with your boss. You are often called upon to communicate, plan, organize, negotiate and participate in decision making at very high levels. Attend this seminar and master techniques for effective goal setting, prioritizing, planning, decision making, relationship building and listening. Learn how to communicate confidently and assertively—and develop and use power and authority.

MTWRF 06/12-06/26 6:00pm-7:00pm WEB 759326

KEY COURSE BENEFITS

- Consistently anticipate your boss's needs
- Gain the respect of your boss and be taken seriously
- Confidently represent your boss
- Be seen by your boss and by others as a valuable professional resource
- Develop a trusting relationship with your boss
- Partner with multiple bosses and other office professionals

WHO SHOULD ATTEND

Senior administrative support staff, executive secretaries, administrative professionals, staff assistants and executive assistants.

For information email: ce@broward.edu

Making the Transition to Management - \$49

Now that you've been promoted, do you know how to be the boss? Here's where you'll lay the foundation for your management career and get easy-to-apply tools to make a successful transition into your new role. In just two days you will gain the practical know-how you need—and the confidence you want—to step in as an effective new manager.

MTWRF 07/09-08/30 6:00pm-7:00pm WEB TBA

KEY COURSE BENEFITS

- Understand your new managerial responsibilities
- Establish credibility and effective work styles
- Build alliances with peer managers
- Master the basic management concepts of coaching, communication, motivation, delegation and performance
- Become an effective member of the management team

WHAT YOU WILL COVER

- Adopting a new manager mindset
- Knowing the business: operational and tactical planning; action
- Understanding others: strengthening communication, roles and responsibilities
- Recognizing contributions and challenges of different styles
- Using a structured approach to plan and organize work
- Creating solutions to management challenges

WHO SHOULD ATTEND

Professionals who need practical business acumen skills.

For information email: ce@broward.edu

Click on the "Course Title" to **Register** or browse additional course details

Click on the "Course Title" to **Register** or browse additional course details



* Median salary in Broward County based on Lightcast, 2024

2-15 Life, Health & Variable Annuity O

Topics covered include Federal and State Regulations, Legal Concepts of the Insurance Contract, Life and Health Insurance, Annuities, Health and Accident Insurance, and Disability and Medical Reimbursement. It is designed and taught to comply with the state requirements for the Life, Health and Annuities education state examination.

94549	60 HRS.	\$119
MTWRF 05/14	On-Demand with Instructor	OLT
MTWRF 06/11	On-Demand with Instructor	OLT
MTWRF 07/09	On-Demand with Instructor	OLT

2-20 Property & Casualty/General Lines (NEW!) O

The course covers underwriting, types of policies, provisions, riders, options, and exclusions. It explores personal, family, and business use of life insurance products, as well as major tax considerations. Learn Florida and Federal laws and regulations governing insurance transactions and dealings with the public. It is designed and taught to comply with the state requirements for the General Lines Agents State examination.

123542	200 HRS.	\$460
MTWRF 05/14	On-Demand with Instructor	OLT
MTWRF 06/11	On-Demand with Instructor	OLT
MTWRF 07/09	On-Demand with Instructor	OLT

4-40 Registered Customer Service O

Topics covered include Automobile, Property Insurance, Inland Marine, Crime, Workers Compensation, General Liability, and Health Insurance. Successful completion of this course exempts you from the state exam and allows you to apply with the Department of Financial Services for the state issued 4-40 RCSR license.

94898	40 HRS.	\$360
MTWRF 05/14	On-Demand with Instructor	OLT
MTWRF 06/11	On-Demand with Instructor	OLT
MTWRF 07/09	On-Demand with Instructor	OLT

4-40 to 2-20 Conversion Property & Casualty General Lines O

This course offers the fastest, most affordable and convenient way to become a licensed Property & Casualty General Lines Agent if you have had at least one year of responsible insurance duties as a licensed and appointed Customer Representative (4-40), or a Personal Lines Agent (20- 44), or a Service Representative (0-55). Convert your 4-40, 0-55, or 20-44 license to a full 2-20 General Lines license.

98770	40 HRS.	\$360
MTWRF 05/14	On-Demand with Instructor	OLT
MTWRF 06/11	On-Demand with Instructor	OLT
MTWRF 07/09	On-Demand with Instructor	OLT

3-20 or 6-20 Accredited Claim Adjuster O

Become a licensed Accredited Claims Adjuster with this 40-hour course. It is designed and taught to comply with the state requirements for Accredited Claims Adjuster examination. After completion of this course, you will receive the Accredited Claims Adjuster designation which allows you to apply to the Florida Department of Financial Services for your choice of 3-20 Public Adjuster or 6-20 All-Lines license.

98773	40 HRS.	\$360
MTWRF 05/14	On-Demand with Instructor	OLT
MTWRF 06/11	On-Demand with Instructor	OLT
MTWRF 07/09	On-Demand with Instructor	OLT

Real Estate: FREC 1 O

There has never been a better time to get your Florida Real Estate License. Start your training today by enrolling in the FREC 1 (Florida Real Estate Course). FREC 1 Course is an introduction to the basic principles and theories of real estate property, its economic value, and the legal aspects of real estate law affecting salespersons. Successful completion qualifies candidates to apply for the State of Florida Salesperson's License Exam.

EDC 0590	63 HRS.	\$299
MTWRF 05/14	On-Demand with Instructor	OLT
MTWRF 06/11	On-Demand with Instructor	OLT
MTWRF 07/09	On-Demand with Instructor	OLT



APPROVED BY THE STATE OF FLORIDA

Real Estate Investing O

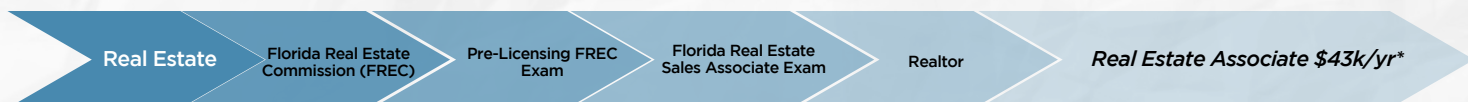
Develop a plan for your own investing efforts based on your personality and investing objectives. You'll learn how to invest in foreclosures, manage a rehab project, and build your team of real estate professionals (title officers, lawyers, accountants, mortgage brokers, appraisers, and more).

EDI 0615	24 HRS.	\$135
MTWRF 05/14	On-Demand with Instructor	E2G
MTWRF 06/11	On-Demand with Instructor	E2G
MTWRF 07/09	On-Demand with Instructor	E2G

20-44 Personal Lines Agent O

Topics covered include Personal Automobile, Property Insurance, Inland Marine, Homeowners, and Dwelling and Related Coverages. It is designed and taught to comply with the state requirements for the Personal Lines Agents state examination.

95149	60 HRS.	\$360
MTWRF 05/14	On-Demand with Instructor	OLT
MTWRF 06/11	On-Demand with Instructor	OLT
MTWRF 07/09	On-Demand with Instructor	OLT



* Median salary in Broward County based on Lightcast, 2025

Click on the "Course Title" to **Register** or browse additional course details

Click on the "Course Title" to **Register** or browse additional course details



* Median salary in Broward County based on Lightcast, 2024

English Essentials O

This course is designed for students with Zero knowledge of English. It starts with the ABC's in a 1-2-3 (see it - Say - Use it) step-by-step technique. Each lesson will cover a specific grammar structure -- practiced through repetition exercises, dialogues, and writing exercises based on real life experiences.

EDE 0904 **42 HRS.** **\$395**
Contact us for information. ce@broward.edu

Intensity English I B

For non-English speakers who have limited knowledge of the English language. Students will learn very basic grammar, conversation, as well as reading and writing skills. New beginning vocabulary introduced.

EDC 0751 **30 HRS.** **\$395**
TR 07/03-08/05 06:00pm-9:00pm Remote 758832

Intensity English II B

For the intermediate English language student who has prior knowledge for English. Students will learn more advanced grammar, conversation, writing and reading skills in English. Develop additional vocabulary.

EDC 0791 **30 HRS.** **\$395**
Contact ce@broward.edu

French Conversation Basics O

Discover how easy it can be to learn common words and phrases for both leisure and business. Each lesson also includes cultural tips. Hand and body gestures mean different things in different cultures.

EDC 0615	24 HRS.	\$135
MTWRF 05/14	24/7 eLearning	E2G
MTWRF 06/11	24/7 eLearning	E2G
MTWRF 07/09	24/7 eLearning	E2G

Spanish I O

For the student that wants to learn the Spanish language for business or personal use. Special emphasis is placed on basic verb usage, sentence structure and vocabulary development. Group participation fosters a friendly, as well as an academic classroom environment.

EDC 0187	24 HRS.	\$135
MTWRF 05/14	On-Demand with Instructor	E2G
MTWRF 06/11	On-Demand with Instructor	E2G
MTWRF 07/09	On-Demand with Instructor	E2G

Sign Language O

Discover the fun of learning sign language and using your hands to communicate. This course is taught using the best practices of the industry with a minimum of audio support.

EDC 0920	24 HRS.	\$135
MTWRF 05/14	On-Demand with Instructor	E2G
MTWRF 06/11	On-Demand with Instructor	E2G
MTWRF 07/09	On-Demand with Instructor	E2G

Spanish for Healthcare Professionals O

<https://www.ed2go.com/browardcc/online-courses/learn-spanish-for-medical-professionals/>

LEARN SPANISH



Drones UAS O

The Part 107 regulatory action requires special piloting license for commercial use of drones based on the Federal Aviation Administration (FAA) incorporated licensing guidelines for small Unmanned Aircrafts (sUAS).

Complete this training to pass the FAA's Aeronautical Knowledge Test and become FAA-certified drone pilots.

This self-paced online training program has a 99% success pass rate and includes 70+ video lessons that cover the 120+ concepts that the FAA has outlined in their UAS Airman Certification Standards across 5 key areas:

- Drone Laws & FAA Regulations
- Weather & Micrometeorology
- National Airspace System (NAS)
- Drone Flight Operations
- UAS Loading & Performance

Remote Pilot In Command Certificate FAA UAG O

Learn to pilot a drone and develop piloting practices for the operation of small Unmanned Aircraft Systems (sUAS/Drones). Part II of this program will prepare you for the Federal Aviation Administration (FAA) Airman Knowledge Test (AKT). Earn the Remote Pilot-In-Command Credential. Prepare for the FAA Airman Knowledge Test (AKT) for the Unmanned Aircraft-General (UAG) written examination.

EDI 0918	16 HRS.	\$299
MTWRF 05/14-07/09	Remote	758816
MTWRF 06/11-08/10	Remote	758824
MTWRF 07/09-09/07	Remote	758838

The Drone Business Blueprint

\$149

Your Pathway to Drone Business Success

Getting a drone business off the ground can be challenging — but we're here to guide you every step of the way. With The Drone Business Blueprint — you'll have step-by-step strategies, practical tools, and the confidence to launch, grow, and scale your drone business.

Powered by



Additional Information ce@broward.edu

Click on the "Course Title" to **Register** or browse additional course details

KIDS & TEENS SUMMER

WORKFORCE AND CONTINUING EDUCATION

Rising 3rd - 12th Grades

*College***Plan Early: June 23 - July 25 2025**

Scan QR Code

Training Future Ready Teens[Register](#)**Immersive Career Exploration**Get your **KTSC** College ID**BROWARD COLLEGE**Information Sessions May 01 & June 05, 11
Broward.edu/Youth

Reserve your seat



2025/26 School Calendar

MAY				
M	T	W	T	F
			1	2
5	6	7	8	9
12	13	14	15	16
19	20	21	22	23
26	27	28	29	30

JUNE				
M	T	W	T	F
2	3	4	5	6
9	10	11	12	13
16	17	18	19	20
23	24	25	26	27
30				

JULY				
M	T	W	T	F
	1	2	3	4
7	8	9	10	11
14	15	16	17	18
21	22	23	24	25
28	29	30	31	

- Employee Planning (No School for Students)
- Schools Closed
- Early Release Day
- Lifelong Learning Registration Begins
- Lifelong Learning Begins

2025

BUSINESS & HEALTHCARE

CUSTOMIZED TRAINING AND CORPORATE EDUCATION

Ready

NEED
FUNDING?

CHECK THESE
RESOURCES



JUST-IN-TIME SKILLS TRAINING

UPSKILL YOUR STAFF

- Increase Productivity
- First Time Managers
- Customer Service
- Healthcare Staffing
- Scale your Business

PROGRAMS

- Computer Application
- Artificial Intelligence
- Sales and Marketing
- Process Improvement

Let's address the talent shortage together and solve performance challenges.

Contact us: ce@broward.edu

We bring the training to you

C

Class: In-person

B

Blended

V

Virtual

O

Online



Click to Open Flipbook



Business Resources

Quick Response Training. (QRT)

Funds businesses like yours to implement flexible and customized training for your new, full-time, permanent employees. Available only to new and expanding companies in Florida's booming business market. Quick Response Training provides funds to create specialized training specifically for your high-skill industry. <https://careersourceflorida.com/business-services/training-grants/qrt>

Incumbent Worker Training. (IWT)

Florida's Incumbent Worker Training grants can help. The program provides grants for continuing education and training of current full-time employees at **Florida companies**. <https://careersourceflorida.com/business-services/training-grants/iwt/>

For information email: ce@broward.edu

Invest in your team and let Broward College bring training to you! Visit www.broward.edu/corporate

Invest in your team and let Broward College bring training to you! Visit www.broward.edu/corporate

2025

BUSINESS

WE BRING THE TRAINING TO YOU

- First Time Managers
- Customer Service
- Scale your Business

Register now!

NEED FUNDING?

CHECK THESE RESOURCES



Lunch & Learn -or- Train to Gain (2-hr. Express Learning)

BUSINESS (under 6 HRS.)		
Course Title	Fees	Hrs.
First Time Supervisor/Transition to Manager	\$299	6 hrs.
Human Resource Department of One	\$299	6 hrs.
Collaboration at Work	\$199	6 hrs.
Partner with your Boss	\$49	6 hrs.
Business Acumen	\$99	6 hrs.
ARTIFICIAL INTELLIGENCE		
Course Title	Fees	Hrs.
AI – Workplace Applications	\$108	6 hrs.
Generative AI, Career Essentials	\$59	6 hrs.
Co-Pilot Essentials - learning path	\$59	6 hrs.

PROCESS IMPROVEMENT (under 30 mins)		
Process Improvement: Project Execution	\$49	30 min.
Process Improvement: 8 Wastes	\$49	30 min.
Six Sigma Yellow Belt Fundamentals	\$99	30 min.
Six Sigma Intro	\$49	30 min.
DMAIC: Analyze, Control, Define, Improve, Measure	\$99	30 min.

COMPUTER APPLICATIONS (under 60 minutes)		
FL Ready to Work: Digital Skills	Tuition Free	12 hrs.
Microsoft Excel Tips and Tricks	\$59	90 mins.
Microsoft PowerPoint Basics	\$99	90 mins.

SOCIAL RETURN ON INVESTMENT (SROI) Path	
Course Title	Email
SROI-3 What is Social Return on Investment	ce@broward.edu
SROI-4 Seven Principles of SROI	ce@broward.edu
SROI-5 Help Me	ce@broward.edu
SROI-6 Who can use SROI	ce@broward.edu
SROI-7 Analysis	ce@broward.edu
SROI-8 What is value	ce@broward.edu
SROI-9 Calculate Social Benefits (KTSC)	ce@broward.edu
SROI-10 Measuring Impact (BUP)	ce@broward.edu

SOFTSKILLS TOPICS (under 2 hrs.)	
Course Title	Hrs
Written & Interpersonal Communication	1 hr.
Begin and Stay Organized	1 hr.
Solve Problems/Make Decisions	1 hr.
Time Management	1 hr.
Stress Management	1 hr.
Conflict Management	1 hr.
Financial Skills	1 hr.





**NEED
FUNDING?**

**CHECK THESE
RESOURCES**



Make
2025
Count!

Your Specialized Training



Cardiac Monitoring



Perioperative care



Basic Arrhythmia



Critical care

HEALTHCARE (under 6 HRS.)			
Course Title	Fees	Hrs.	Ref #
Basic Life Support	\$100	4.5 hrs.	757386
Domestic Violence	\$27	2 hrs.	757401
Florida Laws & Rules - Nursing	\$27	2 hrs.	757411
Florida Laws & Rules - Respiratory	\$27	2 hrs.	757413
HIV/AIDS	\$40	4 hrs.	757415
Mini HealthCareer Core	\$79	6 hrs.	752629
Prevention of Medical Errors	\$27	2 hrs.	757417
TB/OSHA/Hepatitis	\$60	6 hrs.	757420



Register now!

1. Start anytime
2. Log-on from anywhere
3. Self-paced
4. Short sessions
5. Complete under 6-hrs.

Claim your seat!

Too busy to attend on campus?
We can bring the training to you.
Anytime, anywhere:

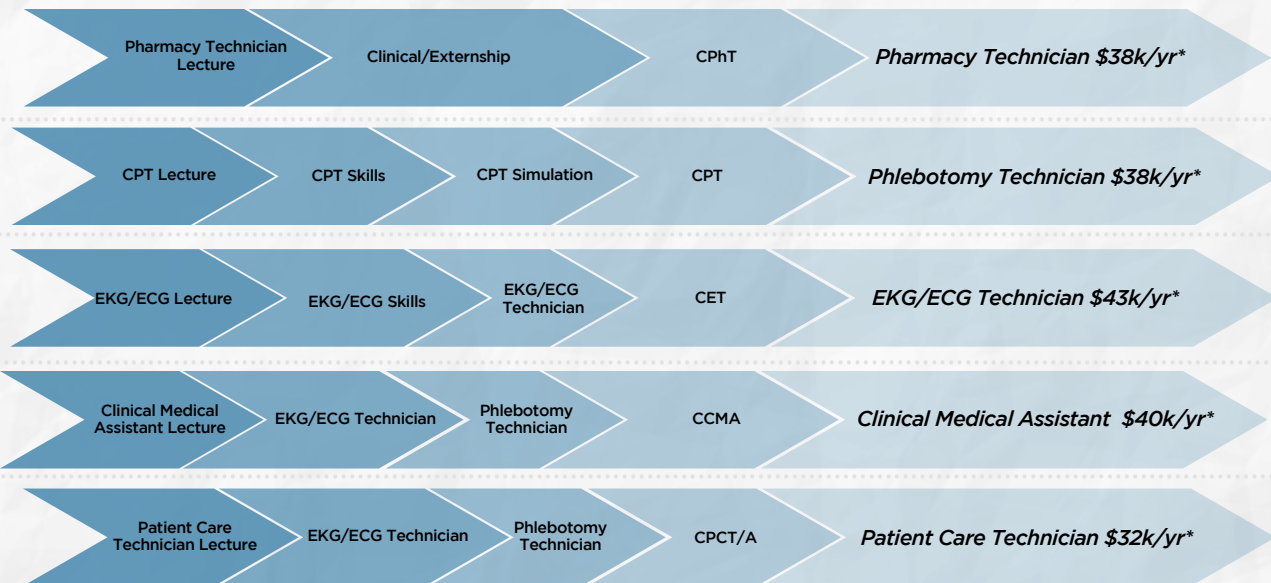
3-Month Pass* | \$349
(3 Online Courses within 3 months)

4-Month Pass* | \$399
(4 Online Courses within 4 months)

*Pass can be used by same or different student. Info: ce@broward.edu

Email to claim elearning pass

For more career paths click or scan the QR code



* Median salary in Broward County based on Lightcast, 2024

Anatomy of a Digital Badges



Earn your Micro Credentials & DIGITAL BADGE

Share your accomplishments with colleagues and employers

- Step 1: Select and Enroll in a Micro-Credential course.
- Step 2: Complete Requirements and receive Micro-Credential.
- Step 3: Earn your Badge.
- Step 4: Share your Micro-Credential & Digital Badge on: LinkedIn and other social media platforms, Resume, embed in your e-mail signature.

Scan/Click



Watch this video to learn how they work.

LIFELIKE - Immersive experience that mirrors real-life medical scenarios.

BODYINTERACT- (RN Virtual Patient Scenarios- Clinical Education: Innovative Didactic with virtual Patients) while developing procedural competence through virtual patient with measured assessments Peek: <https://youtu.be/3xXbiTcj32w>

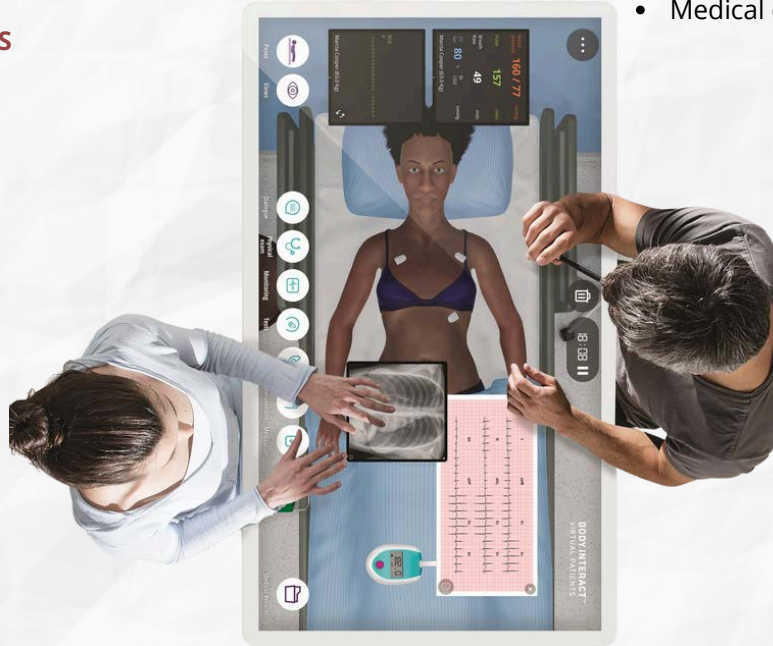


Classroom Includes:

- Skills stations
- Simulation area
- Medical equipment

ONE DAY HEALTHCARE SKILLS WORKSHOPS

- NURSE REFRESHER
- BLS
- ACLS
- ED SKILLS
- ARRHYTHMIA
- CRITICAL CARE
- CARDIAC MONITORING
- PROGRESSIVE CARE
- IV/CENTRAL LINES FOR NURSES
- IV/THERAPY FOR RADIOLOGY TECH.
- MRI (MAGNETIC RESONANCE IMAGING)



Meet Body Interact - The most advanced Virtual Patient Simulator

Meet
Body Interact

Watch on YouTube

Fully immersive Augmented Reality (AR) enriched experience allows students to practice advanced patient care in a virtual zero-risk clinical training environment designed to reduce the frequency of medical errors in a real healthcare setting.

Click on the "Course Title" to **Register** or browse additional course details



In-Person and Virtual Skills Lab



Nursing Assistant Program **B**

This course prepares students to work with people of various demographics and establish foundational skills that expand their understanding of Nursing Assistants in healthcare. Topics covered include, safety, basic nursing care, rehabilitation and restorative care, infection control and patient care. The course also includes interactive activities, simulated laboratory experiences and hands-on skills in a designated clinical setting

CAE 0360	69HRS.	\$2,499
R	02/06-03/27 6:00pm-9:00pm	CEN 752618
M	03/17-04/28 6:00pm-9:00pm	CEN 752624

Medical Billing and Coding **O**

Learn pharmacy medical terminology, pharmacy calculations, reading and interpreting prescriptions, defining generic and brand names drugs to prepare you for the NHA National Certification.

CAE 0691	120 HRS.	\$2,199
MTWTR	05/14-08/31 24/7	elearning WEB

Clinical Medical Assistant **B**

Prepare to perform various clinical tasks such as assisting with minor medical procedures and administering medications, performing EKG electrocardiograms, obtaining laboratory specimens, etc.

CAE 0747	140 HRS.	\$2,969
MW	05/12-08/11 1:00pm-4:00pm	SUN 757410
MW	05/12-08/11 6:00pm-9:00pm	CEN 758673

Phlebotomy Technician **C**

Learn how to safely obtain patient's blood specimens by venipuncture and micro-collection for laboratory analysis. Topics in this course include related anatomy and physiology and procedures for collection of other types of specimens.

CAE 0756	90 HRS.	\$1,649
TR	05/20-06/17 6:00pm-9:00pm	CEN 757475
MW	06/23-07/14 6:00pm-9:00pm	CEN 757476

EKG Technician **B**

EKG Technicians are in demand! This program covers topics and processes critical to conducting and interpreting EKGs as an important member of the healthcare team.

CAE 0765	90 HRS.	\$1,649
TR	06/03-07/03 6:00pm-9:00pm	TBA 758675
TR	06/24-07/31 6:00pm-9:00pm	CEN 758540

Electronic Health Records **B**

Learners will review the implementation and management of electronic health information using common electronic data interchange systems and maintaining the medical, legal, accreditation and regulatory requirements of the electronic health record.

CAE 0703	50 HRS.	\$1,649
T	06/06-06/27 1:00pm-4:00pm	SUN 758541

Patient Care Technician **B**

This course provides students technical skills necessary to service complex patient personal care and medical assisting issues including the implementation of selected portions of a specific care plan that may include rehabilitation services, bedside care, collection of laboratory specimens, phlebotomy, and EKG's. Patient Care Technicians work alongside doctors, nurses, medical assistants, and other healthcare providers to oversee and monitor patients.

CAE 0762	127HRS.	\$2,399
TR	05/13-07/29 6:00pm-9:00pm	CEN 757474
TR	05/20-07/31 1:00pm-4:00pm	SUN 757473

Medical Administrative Assistant **C B**

This program prepares students to function effectively in many of the administrative and support positions at hospitals, physician practices and with other healthcare providers.

CAE 0764	50 HRS.	\$1,649
TR	06/03-07/03 1:00pm-4:00pm	SUN 757491

Basic Life Support (BLS) **C**

The basic rescuer training is intended to provide the student with information about prudent heart living, prevention of unnecessary death from heart attack, signals and actions for survival, as well as mastery of the skills involved in CPR 1 and 2 person, obstructed airway and infant CPR.

CAE 0062	4.5 HRS.	\$100
S	05/17 8:30am-1:00pm	CEN 757386
W	05/21 5:30pm-10:00pm	CEN 757387
S	06/21 8:30am-1:00pm	CEN 757388
W	06/25 5:30pm-10:00pm	CEN 757389
S	07/12 8:30am-1:00pm	CEN 757390
W	07/16 5:30pm-10:00pm	CEN 757391
S	07/19 8:30am-1:00pm	CEN 757392
W	07/23 8:30am-1:00pm	CEN 757393
S	07/26 8:30am-1:00pm	CEN 757394

Training Center



Click on the "Course Title" to **Register** or browse additional course details



Classroom Includes:

- Skills stations
- Simulation area
- Medical equipment

GAIN MEDICAL EXPERIENCE C

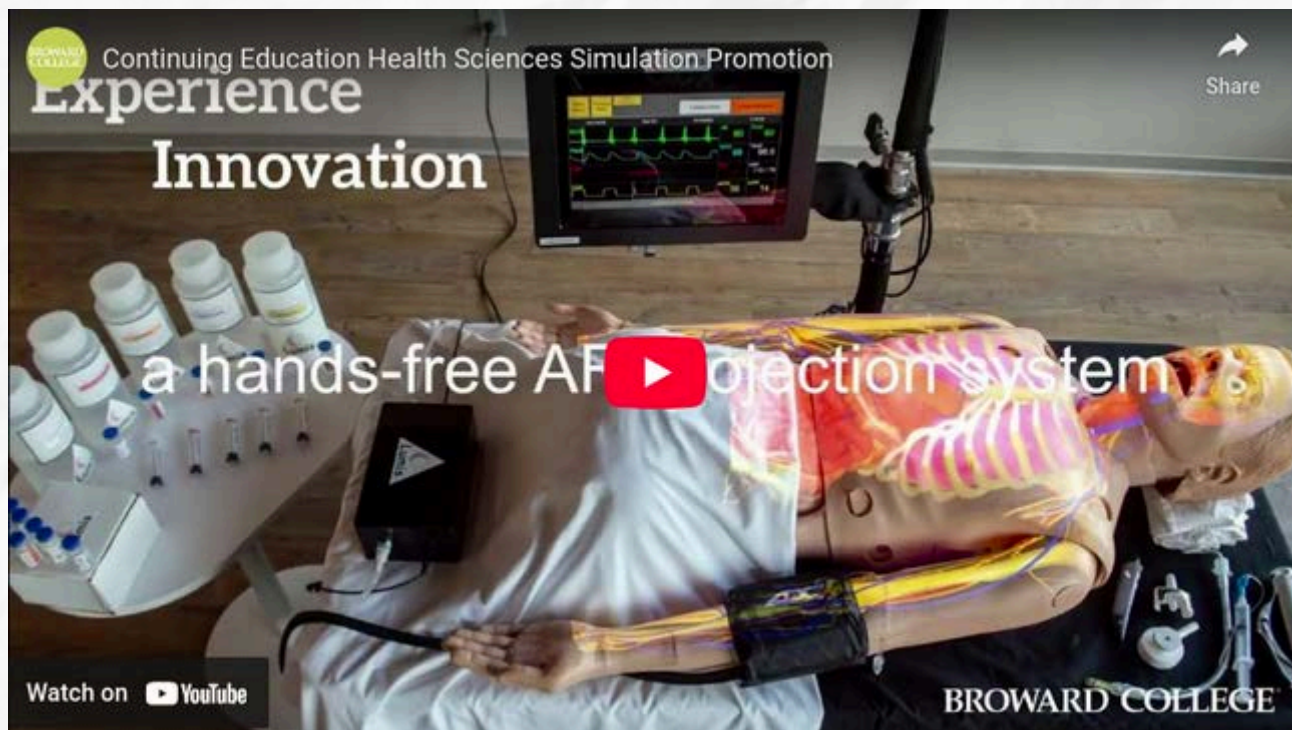


PRACTICE ADVANCED PATIENT CARE IN A VIRTUAL ZERO-RISK CLINICAL TRAINING ENVIRONMENT



IMMERSIVE EXPERIENCE THAT MIRRORS REAL-LIFE MEDICAL SCENARIOS

Fully immersive Augmented Reality (AR) enriched experience that merges the physical environment, with a digital simulation, allowing students to practice advanced patient care in a virtual zero-risk clinical training environment designed to reduce the frequency of medical errors in a real healthcare setting.



PRACTICE ADVANCED PATIENT CARE IN A VIRTUAL ZERO-RISK CLINICAL TRAINING ENVIRONMENT

SKILLS C

IMMERSIVE EXPERIENCE

Learn in demand healthcare skills in our powerful teaching environment with hands-free (no headsets or a screen) AR system. Discover sensor-based Smart Peripherals that mimics clinical instruments and advance learning across multiple healthcare Continuing Education courses.

SMART PERIPHERALS™

sensor-based Smart Peripherals mimic clinical instruments to measure user actions and provide real-time feedback during simulations.

SKILLS

- Smart IV Sleeve™ – administration of simulated drugs
- Smart Stethoscope™ – patient assessment
- Smart Scalpel™ - virtual dissection and anatomy exploration
- Smart Ultrasound™ - simulated advanced ultrasound imaging
- Smart Airway™ - tracks intubation and airway management
- Smart CPR™ - correctly administer CPR
- Smart Needle™ - develop skills involving needle insertion

Click on the "Course Title" to **Register** or browse additional course details

Professional Bundle- BC Online S

Bundle includes 6 fully online, self-paced courses that meet state requirements for license renewal HIV/Aids, Domestic Violence, Prevention of Medical Errors, TB/OSHA/Hepatitis, Florida Laws & Rules, and Recognizing Impairment in the Workplace.

CAE 0758	20 HRS.				\$150
MTWRF	05/12-06/30	24/7	Online	CEN	757399
MTWRF	07/01-08/12	24/7	Online	CEN	757400

HIV/AIDS - BC Online S

This is a fully online, self-study course, designed to provide instruction on the current trends in HIV transmission, treatment for HIV/AIDS, occupational transmission of HIV, and the Center for Disease Control (CDC) recommendations for HIV testing.

CAE 0616	4 HRS.				\$40
MTWRF	05/12-06/30	24/7	Online	CEN	757415
MTWRF	07/01-08/12	24/7	Online	CEN	757416

Domestic Violence - BC Online S

Learn the reporting requirements for healthcare workers regarding domestic violence to including partner and domestic abuse, child and elder abuse.

CAE 0615	2 HRS.				\$27
MTWRF	05/12-06/30	24/7	Online	CEN	757401
MTWRF	07/01-08/12	24/7	Online	CEN	757402

Prevention of Medical Errors - BC Online S

This is a fully online self-study course, designed to provide instruction on medical errors, factors related to their occurrence, methods to prevent their occurrence, and processes and strategies to improve patient outcomes.

CAE 0617	2 HRS.				\$27
MTWRF	05/12-06/30	24/7	Online	CEN	757417
MTWRF	07/01-08/12	24/7	Online	CEN	757418

TB/OSHA/Hepatitis - BC Online S

This is a fully online, self-study course, designed to provide instruction on OSHA regulations, infection control, hepatitis, and tuberculosis.

CAE 0663	6 HRS.				\$60
MTWRF	05/12-06/30	24/7	Online	CEN	757420
MTWRF	07/01-08/12	24/7	Online	CEN	757421

Florida Laws & Rules - Nursing - BC Online S

A fully online self-study course designed to provide a review of Florida laws and rules related to the practice of nursing. The target audience for this course is registered nurses, clinical nurse specialists, advanced registered nurse practitioners, licensed practical nurses, and certified nursing assistants.

CAE 0657	2 HRS.				\$27
MTWRF	05/12-06/30	24/7	Online	CEN	757411
MTWRF	07/01-08/12	24/7	Online	CEN	757412

Florida Laws & Rules - Respiratory - Online S

A fully online self-study course designed to provide a review of Florida laws and rules related to the practice of respiratory therapy. The target audience for this course is respiratory therapists.

CAE 0656	2 HRS.				\$27
MTWRF	05/12-06/30	24/7	Online	CEN	757413
MTWRF	07/01-08/12	24/7	Online	CEN	757414

License and per-requisite required

Nursing Skills C

This skill-based interactive immersive clinical scenario program utilizes fidelity simulations to enhance clinical experiences in a safe virtual environment.

CAE 0064	18 HRS.				\$399
F	02/21-02/21	8:00am-4:30pm	CEN		752921
F	04/25-04/25	8:00am-4:30pm	CEN		752922

RN Refresher- Self-guided with Instructor S

The Nurse Refresher Course is designed for nurses returning to the clinical setting. Students will explore current nursing practices and issues and learn about the most up to date standards of practice. A review of body systems, intravenous therapy, fluids and electrolytes, and management of common disorders will provide a level of comfort when returning to patient care.

CAE 0623	85 HRS.				\$1,499
UMTWRF	03/12-04/30	Online		WEB	757426

Advanced Cardiac Life Support (ACLS) C

Learn high-level CPR, cardiovascular emergencies, and cerebrovascular emergencies, along with respiratory and metabolic emergencies with hands-on practice. Learn how to effectively communicate within a resuscitation team to handle pharmacology and toxicology emergencies. Discover the basics of acute coronary syndrome and stroke management.

Email: cehealth@broward.edu for information on how to register for this course.

CAE0309	16 HRS.				\$175
TW	06/10-06/11	08:00am-05:00pm	CEN		752094
TW	08/12-08/13	08:00am-05:00pm	CEN		752095

Micro Credentials & DIGITAL BADGE

Share your accomplishments with colleagues and employers

Anatomy of a Digital Badges



Connects licensing boards, education providers, and licensed professionals

Click on the "Course Title" to **Register** or browse additional course details

Click on the "Course Title" to **Register** or browse additional course details



Phlebotomy Technician (CPT) C



This course will discuss the principles of phlebotomy and techniques for drawing blood while utilizing safety procedures and proper standards. Students will learn terminology, types of specimens, and skills needed to perform venipuncture and capillary collection techniques. In-person and Virtual Skills Lab included!

Certification: CPT, National Healthcareer Association (NHA)

CAE 0756	90 HRS.	\$1,649
TR	05/20-06/17 6:00pm-9:00pm	CEN 757475
MW	06/23-07/14 6:00pm-9:00pm	CEN 757476

8% Employment of Phlebotomy Technician is expected to grow 8% through 2032 (Bureau of Labor Statistics)

EKG Technician (CET) C

This course prepares students to perform EKGs and includes basic anatomy and physiology of the heart, medical disease processes, medical terminology, medical ethics, legal aspects of patient contact, emergencies related to cardiac testing: syncope, chest pain, and abnormal vitals.

Certification: CET, National Healthcareer Association (NHA)

CAE 0765	90 HRS.	\$1,649
TR	06/03-07/03 6:00pm-9:00pm	CEN 758675
TR	06/24-07/31 6:00pm-9:00pm	TBA 758540

10% Employment of EKG Technician is expected to grow 10% through 2032 (Bureau of Labor Statistics)

KEY COURSE BENEFITS

Students will learn about arrhythmias, calculating heart rates, and types of ECGs.

Additionally, students will practice with EKG equipment and perform hands on labs including introduction to the function and proper use of the EKG machine.

WHO SHOULD ATTEND

Recent high school graduates who are looking for a career that doesn't require a four-year degree. People who are looking to change careers and want to work in the healthcare field. Medical assistants who want to expand their skills and knowledge



MEDICAL PROFESSIONAL LEGAL CONSULTANT

Convenient, affordable and effective legal training.



REGISTER NOW

Center for
Legal Studies
A BARBRI Company



MEDICAL LEGAL CONSULTANT / PROFESSIONAL

- Legal Nurse Consultant
- Medical Professional Legal Consultant
- Victim Advocacy Certificate

CLASSES START JAN 13, 2025

- 05/05/25-06/20/25 24/7 Online
- 06/30/25-07/15/25 24/7 Online
- 08/55/25-09/09/25 24/7 Online

Seats are limited. Email ce@broward.edu for more information

nha
NATIONAL
CERTIFICATIONS

Click on the "Course Title" to **Register** or browse additional course details

Click on the "Course Title" to Register or browse additional course details



Behavior Technician 16 weeks - \$2,500 O

Begin your career with the skills to thrive and earn your credentials as a Registered Behavior Technician (RBT). Learn a series of documentation and protocol rules and regulations by to the Behavior Analyst Certification Board (BACB) guidelines and HIPAA regulations.

Learn BCBA material needed for the BACB RBT Certification exam. Both of these are extremely important – this course is offered as part of the RBT training and should be understood prior to taking the BACB examination for the RBT certificate.

EDI 0019	45HRS.			\$2,500
MTWRF	05/14-08/06	24/7	Online	758743
MTWRF	06/11	24/7	WEB	E2G
MTWRF	07/09	24/7	WEB	E2G

Surgical Technician 16 weeks - \$4,000 O

Gain skills to become a Surgical Technologists, also called Operating Room Technicians. Work alongside, and assist surgeons, nurses, and other members of the health care team throughout a surgical operation. This high-earning job is a great opportunity to enter the healthcare industry and work in a fast-paced, stimulating environment

This program prepares students to become Tech in Surgery – Certified (TS-C) by the National Center for Competency Testing (NCCT).

EDI 0017 **288 HRS.** **\$4,000**

Email: ce@broward.edu to register

Medical Lab Assistant 16 weeks - \$4,000 O

A Medical Laboratory Assistant (also known as Lab Aid/Assistant, Specimen Processor/collector), is an important member of the laboratory healthcare team.

Learn to collect, prepare, and transport patient specimens, and may perform various testing on blood, urine, and other bodily fluids. Lab Assistants perform the tests and procedures that physicians and other healthcare providers order, which are often used for the diagnosis of disease.

EDI 0016	256 HRS.			\$4,000
MTWRF	05/14-09/03	24/7	Online	758742

Sterile Processing 14 weeks - \$4,000 O

This three course program includes: Intro to Human Anatomy & Medical Terminology, Professionalism in Allied Health, and Sterile Processing. This program prepares students to become well-rounded Sterile Processing Technicians.

Because graduates will be working in a healthcare facility, it is imperative that they be able to speak and understand the language of medicine and have a fundamental understanding of basic human anatomy and physiology. Sterile processing tasks, by nature, typically involve hands-on interaction, an increased focus is placed on immersion and a high level of interactivity.

EDI 0018	224 HRS.			\$4,000
MTWRF	06/11-09/17	24/7	Online	758820

Note: Full certification is obtained after acquiring 400 hours of hands-on sterile processing experience within six months of provisional certification.

Medical Billing and Coding B

This combined billing and coding course offers the skills needed to perform complex coding and billing procedures. The course covers CPT (Introduction, Guidelines, Evaluation, and Management), specialty fields (such as surgery, radiology, and laboratory), ICD-10 (Implementation and Guidelines), and basic claims processes for insurance reimbursement. Students will learn how to find the service and codes using manuals (CPT, ICD-10 and HCPCS).

CAE 0691	120 HRS.			\$2,199
MTWTR	05/14-11/01	24/7	elearning	WEB

Computerized Tomography Lecture C

This course prepares the student with the knowledge and skills in Computerized Tomography Imaging. The course is designed to allow an accurate assessment of the knowledge, abilities, and skills of the students.

CAE 0541	48 HRS.			\$699
T	05/13-08/12	6:30pm-10:00pm	CEN	757478

Computerized Tomography Clinical B

This course is designed to meet the Clinical Experience Requirements for Computed Tomography (CT) Certification as established by the American Registry of Radiologic technologist (ARRT).

Pre-requisites: Computerized Tomography Lecture

CAE 0651	120 HRS.			\$1,362.90
UMTWRF	05/19-08/14	7:00am-11:00pm	CEN	757480

Magnetic Resonance Imaging Lecture (MRI) C

Students are taught the principles of magnetic resonance imaging technology and learn to operate the MRI scanner to produce cross sectional images of the patient for diagnostic purposes. This curriculum is designed to provide qualified individuals an opportunity to acquire the knowledge, attitude and skills which will enable them to become safe and competent in MRI technology and prepare the graduate for an entry- level position as an MRI technologist.

CAE 0622	48HRS.			\$699
W	05/14-08/13	6:30pm-10:00pm	CEN	757484

Magnetic Resonance Imaging Clinical B

This course is designed to meet the clinical experience requirements for Magnetic Resonance Imaging Certification as established by the American Registry of Radiologic Technologist.

Pre-requisites: Magnetic Resonance Imaging Lecture

CAE 0669	240 HRS.			\$1,512.90
UMTWRF	05/19-08/14	7:00am-11:00pm	CEN	757485

Patient Revenue Cycle B

The Revenue Cycle Specialist serves as a crucial staff member handling tasks such as billing, payments and collections in a healthcare setting.

CAE 0766	15 HRS.			\$699
F	07/11-07/25	1:00pm-4:00pm	SUN	757490

Click on the "Course Title" to **Register** or browse additional course details



Healthcare IT (HIT) O

The Healthcare IT field is booming with development in technology and migration from paper files to electronic records. In our Healthcare IT Certification Training, you'll get to choose your path for certification through either a Healthcare or a Technical focus. Both paths cover medical office procedures & administration and Healthcare IT certification basics. The healthcare-focused path concentrates on Electronic Health Records and CompTIA A+ certification and prepares you for the CEHRS and A+ exams. Whereas the more technical path is focused on CompTIA A+ and Network+ certifications.

EDI0020 **384 HRS.** **\$4,000**
MTWRF 06/11-11/26 24/7 Online CEN 758822

3
Month
Course

16% Employment of Healthcare IT Technician is expected to grow 16% through 2032 (Bureau of Labor Statistics)

After completing our program and passing the Healthcare IT certification exams, you'll be qualified for opportunities like Practice Workflow and Information Specialist, Management Redesign Specialist, Clinician/Practitioner Consultant, Implementation Support Specialist/Manager, PC Technician, Technical/Software Support Specialist, Technology Specialist and more!

Click on the "Course Title" to **Register** or browse additional course details

Your Path to Becoming a Healthcare IT Professional

Healthcare IT Professional

Make
2025
Count!



+



+



+



Medical Office Technology

A+ Comprehensive

Network +

Healthcare IT

Healthcare IT Professional Career Path

Upon successful completion, students will be eligible to sit for three certification exams.

Click on the "Course Title" to **Register** or browse additional course details



Employment of Nursing Assistant is expected to grow through 2028.
- Bureau of Labor Statistics



Classroom Includes:

- Skills stations
- Simulation area
- Medical equipment

Nursing Assistant Program B

This course prepares students to work with people of various demographics and establish foundational skills that expand their understanding of Nursing Assistants in healthcare. Topics covered include, safety, basic nursing care, rehabilitation and restorative care, infection control and patient care. The course also includes interactive activities, simulated laboratory experiences and hands-on skills in a designated clinical setting

CAE 0360	69HRS.		\$2,499
T	05/27-07/01	6:00pm-9:00pm	CEN 758538
W	06/25-08/06	6:00pm-9:00pm	CEN 757488

Nursing Assistant Course components include:

- Health Career CORE
- Nursing Assistant
- Skills Lab

Upon completion of the course, students can self register for the Certified Nursing Assistant exam through Prometrics.

Prerequisites: Students must have a High School Diploma or GED. Contact us for registration cewfd@broward.edu or 954-201-7801.

Employment of Nursing Assistant is expected to grow **4%** through 2020.
- Bureau of Labor Statistics

Click on the "Course Title" to **Register** or browse additional course details

Make
2025
Count!

Your Path to Becoming a Certified Nursing Assistant

Nursing Assistant Preparation



Nursing Assistant

+



Skills Lab

+



Optional - Clinical

Certified Nursing Assistant Career Path

Complete Health Career CORE, Nursing Assistant, Skills Lab, and optional Clinical to prepare for self-certification through Prometrics.

HEALTHCARE - PATIENT CARE TECHNICIAN (PCT)

Click on the "Course Title" to **Register** or browse additional course details



Classroom Includes:

- Skills stations
- Simulation area
- Medical equipment

Patient Care Technician **S**

This course provides students technical skills necessary to service complex patient personal care and medical assisting issues including the implementation of selected portions of a specific care plan that may include rehabilitation services, bedside care, collection of laboratory specimens, phlebotomy, and EKG's. Patient Care Technicians work alongside doctors, nurses, medical assistants, and other healthcare providers to oversee and monitor patients.

CAE 0762	127HRS.	\$2,399
TR	05/13-07/29 6:00pm-9:00pm	CEN 757474
TR	05/20-07/31 100pm-4:00pm	SUN 757473



4%
Employment of Patient Care Technician is expected to grow 4% through 2032 (Bureau of Labor Statistics)

Upon completion of the course, students can take the Patient Care Technician certification exam from the National Health Career Association (NHA).

Tuesday and Thursday 6pm - 9pm 1/9 - 4/18 at the YMCA

Prerequisites: Students must have a High School Diploma or GED.

Contact us for registration cewfd@broward.edu or 954-201-7801.

- Health Career Core
- Nursing Assistant
- Electrocardiogram (EKG)
- Phlebotomy



nha NATIONAL
CERTIFICATIONS

Make
2025
Count!

Click on the "Course Title" to **Register** or browse additional course details

Your Path to Becoming a Patient Care Technician

Patient Care Technician (PCT)



Nursing Assistant

+



Phlebotomy

+



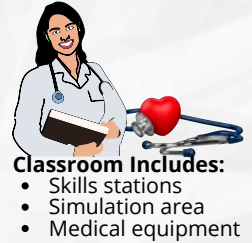
EKG

Patient Care Technician Career Path

Successfully complete Health Career Core, Nursing Assistant, Phlebotomy Technician, Electrocardiography Technician to take the Patient Care Technician Certification exam.

HEALTHCARE - CLINICAL MEDICAL ASSISTANT

Click on the "Course Title" to **Register** or browse additional course details



Classroom Includes:

- Skills stations
- Simulation area
- Medical equipment

Clinical Medical Assistant C

Prepare to perform various clinical tasks such as assisting with minor medical procedures and administering medications, performing EKG electrocardiograms, obtaining laboratory specimens, etc.

CAE 0747	140 HRS.	\$2,969
MW	05/12-08/11 1:00pm-4:00pm	SUN 757410
MW	05/12-08/11 6:00pm-9:00pm	CEN 758673



This course is designed to prepare students to perform various tasks including assisting with the administration of medications, minor procedures, performing EKG electrocardiograms, obtaining laboratory specimens for testing, educating patients and other related tasks. Students will review important topics including phlebotomy, pharmacology, the proper use and administration of medications, medical records management, vital signs, cardiology including proper lead placements, professional workplace behavior, ethics, and the legal aspects of healthcare. Upon completion, students will be eligible for National Certifications: Certified Clinical Medical Assistant (CCMA), EKG Technician (CET) and Phlebotomy (CPT).

Click on the "Course Title" to **Register** or browse additional course details



Your Path to Becoming a Clinical Medical Assistant

Clinical Medical Assistant



Medical Assistant

+



Phlebotomy

+



EKG

Clinical Medical Assistant Career Path

Successfully complete Health CORE, Admin. Medical Assistant, Phlebotomy, Electrocardiography Technician, to earn the Medical Assistant certification!

Click on the "Course Title" to **Register** or browse additional course details
Registered Nurse (RN) Post Licensure Programs:
Specialized Skills



6% Employment of Nurses are expected to grow 6% through 2032 (Bureau of Labor Statistics)



In-Person and Virtual Skills Lab

RN Refresher- Self-guided with Instructor S

The Nurse Refresher Course is designed for nurses returning to the clinical setting. Students will explore current nursing practices and issues and learn about the most up to date standards of practice. A review of body systems, intravenous therapy, fluids and electrolytes, and management of common disorders will provide a level of comfort when returning to patient care.

CAE 0623	85 HRS.	\$1,499
UMTWRF5	06/01-07/01 Online	WEB 757426

This interactive course focuses on nurses who have not practiced nursing for an extended period of time, and need to update their "clinical skills" with a strong emphasis on clinical nursing procedures. Nurses will learn current practices, engage with virtual patients, review body systems, intravenous therapy, and management of common disorders, while providing a level of comfort when returning to patient care.

Nurse Refresher components include:

- Infection Control
- Pharmacology Today
- Cardiac System
- Pulmonary System
- Neurological System
- Gastrointestinal System
- Renal System
- Endocrine System
- Musculoskeletal System and Pain Management
- Multisystem Failures
- Emergency Care

Upon completion of the course, students will be prepared to return to work as a Registered Nurse in a clinical setting.

Monday and Wednesday, 6pm - 9pm 05/08- 08/11/2025

Prerequisites: Must have a RN License
 Contact us for registration cewfd@broward.edu or 954-201-7801.



**Make
2025
Count!**

See below for courses needed to the Workforce.

RN Paths Back to the Workforce



+



+



+



Skill Refresher Virtual Patient Clinical Scenarios 1-Day Skills Workshop Optional - Clinical Site

Nurse Career Path

Possible Employers: Hospitals, Physicians' Offices, Public Health Clinics,
 Home Healthcare Organizations, Telehealth Organizations, Emergency Rooms, etc.

Perioperative Nursing



Make
2025
Count!

BROWARD COLLEGE

Speak with an advisor: cewfd@broward.edu or 954-201-7801

Perioperative Nursing C

CAE0646 [Lecture] 162.5HRS \$2,082.00
MTWRF 06/09-08/12 8:00am-4:30pm CEN 752133

CAE0648 [Clinical] 160HRS \$1,833.90
MTWRF 06/09-08/12 8:00am-4:30pm HOS 752134

Perioperative nurses are the backbone of every surgical team. They ensure the safety and well-being of patients before, during, and after surgery. If you are a critical thinker who thrives in a fast-paced environment and enjoys working collaboratively with other healthcare professionals, then a career in perioperative nursing may be perfect for you.

Some Requirements may apply...

Speak with an advisor: cewfd@broward.edu or 954-201-7801



Classroom Includes:

- Skills stations
- Simulation area
- Medical equipment

Perioperative Program

Complete a perioperative nurse certification program

Gain specialized skills to save lives and do the job correctly!



Basic Arrhythmia **B**

The Basic Arrhythmia Analysis course is designed to equip the healthcare professional with the necessary skills needed to interpret basic ECG rhythms.

Pre-requisites: Active Licensure (RN, LPN, EMT, PM, Respiratory Therapist, Exercise Physiologist, Radiology Technician)

CAE 0702	24 HRS.	\$279
TWR 05/20-05/22	8:30am-4:30pm CEN	752118
TWR 06/03-06/05	8:30am-4:30pm CEN	752119
TWR 06/17-06/20	8:30am-4:30pm CEN	757371
TWR 07/08-07/10	8:30am-4:30pm CEN	757372
TWR 07/22-07/24	8:30am-4:30pm CEN	757373
TWR 08/05-08/07	8:30am-4:30pm CEN	757374

Cardiac Monitoring **B**

This course provides an introduction to electrophysiology and cardiac rhythm interpretation.

CAE 0449	40 HRS.	\$450
MTWRF 05/07-05/13	8:00am-4:30pm CEN	758943

Computerized Tomography Lecture **C**

This course prepares the student with the knowledge and skills in Computerized Tomography Imaging

CAE 0541	48 HRS.	\$699
T 05/13-08/12	6:30pm-10:00pm CEN	757478

Computerized Tomography Clinical **B**

This course is designed to meet the Clinical Experience Requirements for Computed Tomography (CT) Certification as established by the American Registry of Radiologic technologist (ARRT).

Pre-requisites: Computerized Tomography Lecture

CAE 0651	120 HRS.	\$1,362.90
UMTWRF 05/19-08/14	7:00am-11:00pm CEN	757480

Magnetic Resonance Imaging Lecture **C**

Acquire the knowledge, attitude and skills to enable you to become a safe and competent in MRI technologist and prepare for an entry-level position as an MRI technologist.

CAE 0622	48 HRS.	\$699
W 05/14-08/13	6:30pm-10:00pm CEN	757484

Magnetic Resonance Imaging Clinical **B**

This course is designed to meet the clinical experience requirements for Magnetic Resonance Imaging Certification as established by the American Registry of Radiologic Technologist.

Pre-requisites: Magnetic Resonance Imaging Lecture

CAE 0669	240 HRS.	\$1,512.90
UMTWRF 05/19-08/14	7:00am-11:00pm CEN	757485

IV/Central Lines for Nurses **C**

The IV/Central Lines for Nurses course is designed to equip the nurse with the skills needed to care for patients receiving IV therapy, blood transfusions, and for those with central venous catheters.

Pre-requisites: Active RN Licensure

CAE 0661	7.5 HRS.	\$240
W 05/28	8:00am-4:30pm CEN	752131
W 07/16	8:00am-4:30pm CEN	752132

IV Therapy for Radiology Technologists **C**

This course is designed for radiographers who are required to provide venous access and administer and assess the use of contrast media.

Pre-requisites: Active Licensed Radiology Technologist

CAE 0699	7.5 HRS.	\$340
W 05/19	8:30am-4:30pm CEN	752110

Progressive Care **B**

The progressive care course is designed for the Registered Nurse working in progressive care, telemetry, or step-down areas, and includes essential information and skills necessary for progressive care nursing, along with associated pathological conditions for the progressive care population.

Pre-requisites: Active RN Licensure, Completion of Basic Arrhythmia Analysis from an education institution or equivalent program completion (curriculum, contact hours, learning outcomes etc)

CAE 0664	40 HRS.	\$500
MTWRF 06/25-07/01	8:30am-4:30pm CEN	757376
MTWRF 08/20-08/26	8:30am-4:30pm CEN	752090

Intro to Ventilator Management **B**

This course reviews the concepts and skills needed to care for patients requiring invasive and noninvasive modes of ventilation and airway management.

Pre-requisites: Active RN or LPN Licensure

CAE 0557	7.5 HRS.	\$149
F 05/16	8:00am-4:30pm CEN	757351
F 06/27	8:00am-4:30pm CEN	757355
F 07/11	8:00am-4:30pm CEN	757358

Critical Care Lecture/Skills **C**

The Critical Care program is designed to provide the Registered Nurse with the knowledge, skills and understanding of caring for high acuity, critically ill patients. Focus is on cardiovascular, pulmonary, neurologic, renal, gastrointestinal, endocrine, hematologic and multi-system disorders.

Pre-requisites: Active RN Licensure, Completion of Basic Arrhythmia Analysis from an education institution or equivalent program completion (curriculum, contact hours, learning outcomes etc)

CAE 0544/0587	150 HRS.	\$2,174
MTWRF 05/19-06/16	8:00am-4:30pm CEN	752104
MTWRF 07/28-08/22	8:00am-4:30pm CEN	752106

Make
2025
Count!

Click on the "Course Title" to Register or browse additional course details

Your Specialized Training



Cardiac Monitoring



Perioperative care



Basic Arrhythmia



Critical care

Registered Nurse - Specialized Training

Post Licensure Programs

Individual Training

WIOA Individual Training Account (ITA)

Need help paying for Career Training? If you're a Broward County resident, you may be eligible to receive a scholarship of up to \$12,000 from CareerSource Broward for the in-demand career training programs below at Broward College.
<https://ext.careersourcebroward.com/ITASync/Scholarships.aspx>

Programs approved for WIOA funding

- Certified Associate in Project Management (CAPM)
- Certified Information Security Manager*
- Certified Information Systems Auditor*
- CompTIA A+, Network+, Security+ Certifications*
- CompTIA A+ Certification Training
- Certified Clinical Medical Assistant (CCMA)
- Medical Billing and Coding Professional
- Florida 2-20 Property/Casualty Ins. Pre-License*
- Florida 20-44 Personal Lines Agent Pre-License*
- Florida 3-20 and 6-20 Claims Adjuster*
- Florida 4-40 to 2-20 Conversion Pre-License*
- Florida Health and Life Insurance Pre-License*
- Full Stack Software Developer
- Human Resources Professional
- HVACR Technician*
- Certified Paralegal
- Information Security Training*
- Project Management Essentials with CAPM® Prep
- Purchasing and Supply Chain Management
- Six Sigma Black Belt*
- Six Sigma Green Belt*
- And More!



Scholarships



Discounts



Student Loan Programs



Government Funding

Business Grants

Quick Response Training. (QRT)

Incumbent Worker Training. (IWT)

<https://careersourceflorida.com/business-services/training-grants/iwt/>
 For information email: ce@broward.edu

Approved Certification Programs

Course

Adobe Certified Professional in Video Design
 AWS Technical Essentials for Cloud Practitioners
 EKG Technician (CET)
 Electronic Health Record Specialist (CEHRS)
 Human Resources SHRM Certified Professional
 Lean Six Sigma Green Belt (Exam Cost Included)
 Medical Administrative Assistant (CMAA)
 Nursing Assistant
 PMI Project Management Ready
 Phlebotomy Technician (CPT)
 Remote Pilot in Command FAA Certificate

Length Tuition

1-Month \$1,495
 1-Month \$1,649
 1-Month \$1,649
 1-Month \$1,649
 1-Month \$1,299
 1-Month \$1,649
 1-Month \$1,649
 1-Month \$2,969
 1-Month \$999
 1-Month \$1,649
 1-Month \$299

APPLY HERE



Funded by



MyCAA Military Spouse Funding

Obtain the skills to improve your employment in high-demand occupations with these industry credentials - 100% covered

Military Spouse

MyCAA Military Spouse Funding

As a military spouse of an active-duty service member, you have options when it comes to your education. In fact, you may qualify for \$4,000 through the My Career Advancement Account Scholarship (MyCAA) to pursue training and professional certifications. Broward College offers MyCAA-approved 100 % online courses that you can complete anywhere, anytime—at your own pace. For more information on this grant, visit <https://www.broward.edu/academics/continuing-education/programs/my-caa-military-spouse-funding.html>



Programs approved for MyCAA funding

- 40 hr 6-20 -All Lines Accredited Claims Adjuster
- 40hr 4-40 RCSR - Registered Customer Rep
- 60 hr 2-15 Health and Life Insurance (3 months)
- 60 hr 2-15 Health and Life Insurance (6 months)
- ACSM Personal Training
- Assisted Living Technician with Clinical Externship
- Certified Administrative Professional
- Certified Electronic Health Records Specialist
- Certified Medical Administrative Assistant
- Certified Clinical Medical Assistant
- Certified Information Security Manager
- Certified Information Systems Auditor
- Certified Information Systems Security Professional
- Cisco CCNA Certification Training
- Cisco CCNP Security
- Clinical Medical Assistant
- CompTIA A+ Certification Training
- CompTIA Cert. Training: A+, Network+, Security+
- EKG Technician Certificate
- Human Resources Professional
- Mastering Project Management
- Medical Administrative Assistant
- Medical Billing and Coding
- Patient Access Representative
- Pharmacy Technician Certificate
- Phlebotomy Technician Certificate
- Real Estate CE Bundle
- Real Estate Sales Associate
- Registered Behavior Technician and more.

Pre-Payment Plan

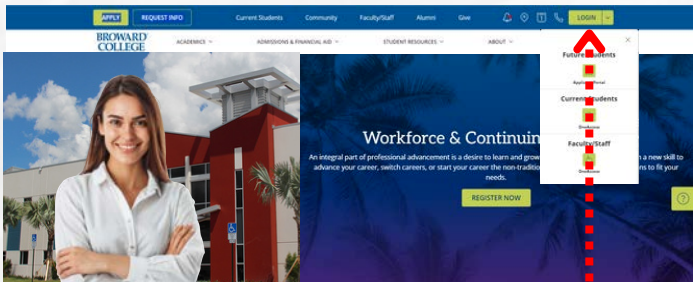
www.broward.edu/students/cashier/





Create/Access Account

You must have a Broward College CE account to register for all course sections, make payments and access account information. Please follow directions below to access and/or create an account.



- Navigate to your web browser address bar and enter the following:

www.broward.edu/ce

Click Login

- Current Students: Sign-in with the credentials associated with your account
 - Use [Find My Username](#) to verify username by providing the student ID associated with your account (contact ce@broward.edu for assistance).

Use [Forgot Password](#) to reset your account password.

You must have access to this email account to reset your password. Use the link provided to reset your password

- Future Students
[Create New Account](#) and submit an application if you are a new student.

Online Registration

- Select a category or review full course listing.
- When selecting a category, a list of courses will be displayed.
- Select a course to view.
- Select your desired course section and add to cart.
- Once item is added, you will be directed to your shopping cart.
- Review all The Continuing Education Program's Policies and Procedures.
- Click Check Out.
- Sign-in or create a new account through the "apply" option
- Confirm payment method and enter Billing Information.



REGISTRATION | Students must register and pay for each course before they attend the first class meeting. There is no application fee for Continuing Education students and tuition is the same for Florida residents and non-Florida residents. All classes listed in this brochure are non-credit and are not applied toward a degree at Broward College (unless otherwise stated).

CAMPUS - IN PERSON | Go to the Registration office on A. Hugh Adams Central Campus, North Campus or Judson A. Samuels South Campus.

ONLINE | Follow the directions for application, registration and payment.

Go to www.broward.edu/ce

Click the "Register for Courses"

1. Select "Continuing Education" Division and choose a subject under Advanced Search
2. Click "Search"
3. Identify your course then add to cart
4. Click "Proceed to checkout"

REGISTRATION ASSISTANCE | Email ce@broward.edu

LEARNING OPTIONS | Online Live, Classroom, Online Courses, Customized Training, On-Demand Learning, Self Paced

COURSE CANCELLATION | Broward College reserves the right to cancel any course that does not meet student enrollment requirements. If insufficient enrollment requires cancelling of a course, tuition fees will be fully refunded. Continuing Education reserves the right to cancel or reschedule courses. In the event of inclement weather, college emergencies, extenuating circumstances beyond the college's control. Course schedule may transition to online learning or rescheduled to ensure successful course completion. Students will be contacted if cancellation impacts their schedule.

WITHDRAWALS AND TRANSFERS | **Withdrawals:** A student may withdraw from a course or educational activity that has not started, by logging onto their Broward College account. The student will receive a 100 % refund between 10-15 business days back to the original method of payment used.

Refunds: Students who register and pay for an educational activity, but do not attend, forfeit the entire registration fee. Online, Remote Learning, and Online-Live classes are not refundable once the class has begun. Email ce@broward.edu

SUMMER | MAY - AUG 2025 - HOLIDAYS AND DAYS OFF

- May 26: Memorial Day
- June 19: Juneteenth
- July 4: Independence Day

ACCESSIBILITY OFFICE | 954-201-7517

CAMPUS SAFETY | 954-201-4357 (HELP)

PAYMENT PLAN | www.MyCollegePaymentPlan.com/broward



PARKING | All campuses except Willis Holcombe Center (Downtown): After registering and paying for your class(es), print out your parking permit, located online at www.broward.edu/ce. Click on "Continuing Education." Under Resources, click on "Print Parking Permit." Students must park in student parking spaces.

LOCATIONS *

CEN - A. Hugh Adams Central Campus
3501 Davie Road, Davie, FL 33314

MWC - Miramar West Center
1930 SW 145th Avenue, Miramar, FL 33027

NOR - North Campus
1000 Coconut Creek Blvd., Coconut Creek, FL 33066

PIN - Pines Center
16957 Sheridan Street, Pembroke Pines, FL 33331

SOU - Judson A. Samuels South Campus
7200 Pines Blvd., Pembroke Pines, FL 33024

OFFSITE LOCATIONS

- **SUN** - Sunshine Health 1299C NW 40th Ave, Lauderhill, FL 33313
- **YMCA** - 4th Floor YMCA 1409 NW 6th St. Fort Lauderdale, FL 33311
- **HOS** - Hospital

eLEARNING

- **REMOTE** - Virtual online class meeting
- **WEB** - Online, anytime, anywhere (24/7)

BROWARD COLLEGE®
WORKFORCE
WORKFORCE AND CONTINUING EDUCATION
Ready

SKILLS
TO DO THE JOB



VISIT US



IF YOU ARE READY TO ADVANCE YOUR CAREER, START HERE

[BROWARD.EDU/CE](https://www.broward.edu/ce)

