

BROWARD COLLEGE®

SPRING | JANUARY-MAY 2024

WORKFORCE

WORKFORCE AND CONTINUING EDUCATION

Ready

Register Today!



- EARN A CREDENTIAL THAT HELPS YOU STAND OUT
- LEARN YOUR WAY!
ON-CAMPUS, ONLINE, VIRTUAL



LIBRARY



Advance your career!



Broward College provides the perfect opportunity to advance your career and achieve your professional goals through immersive virtual skills training. Browse this brochure, enroll, and complete selected courses, then

showcase your accomplishments to potential employers with a micro credential/digital badge.

We are addressing the workforce challenges in the health care industry through various flexible and affordable healthcare specialization programs. Discover our immersive skills lab, with zero-risk simulated training, in these healthcare specializations:

- Medical Assistant
- Patient Care Technician
- Billing & Coding Specialist
- EKG Technician
- Nursing Assistant, and more!

Strengthen your credibility in the workplace and gain the knowledge and skills necessary for career growth. Start today!

Diane Peart, MBA
Associate Vice President
Workforce & Continuing Education

Get Trained. Get Hired.

Virtual Information Sessions

February	2/17/2024 Healthcare Info Session	March	3/18/2024 Workforce - Virtual
	2/22/2024 Workforce Info Session		
	2/28/2024 Spring Breakaway Virtual		



THE SKILLS TO DO THE JOB

General Information

- Letter from the AVP 2
- CE to Degree Path 38
- Employer Spotlight 21
- Tuition Assistance and Scholarships 39
- Registration Process 42
- Workforce job growth projections 3

Artificial Intelligence 22

Allied Health and Medical Programs 24

Corporate and Customized Training 20

Professional Development 3

- Aviation - Drones 18
- Business & Finance 9
- Business Management 8
- Entrepreneurship 8
- Finance, Accounting, Bookkeeping, Tax Preparation 9
- Human Resources 10
- Language: English & Foreign 16
- Marketing & Sales 13
- Non-Profit Organization 9
- Payroll Professional 9
- Supervision & Management 9
- Insurance 17
- Real Estate 17

IT and Computer Applications 14

- MS Office Application 14
- Information Technology 15

Micro learning and Express Courses 4

Kids and Teens 23

- Academic Enrichment
- Spring Breakaway
- Summer College

Download full brochure



BROWARD COLLEGE DISTRICT BOARD OF TRUSTEES

Alexis Yarbrough., Chair
Zachariah "Reggie" P. Zachariah, Jr, Vice Chair
Akhil K. Agrawal, Trustee
Cindy Kushner, Trustee
Mario Zanotti-Cavazzoni, Trustee

Dr. Barbara J. Bryan, President

How to Read Course Schedule

Title &	→ Project Management Hands on Intro				
Description	Gain knowledge of the project management process through planning, scheduling, estimating, documenting, and more.				
ID	→ EDI0000	12 HRS.	\$299	← Tuition	
	W 10/17	6-9p	NOR	442461	
	↑	↑	↑	↑	
	Day	Date	Time	Loc*	Reference No.

*Location (key)

Learn your way

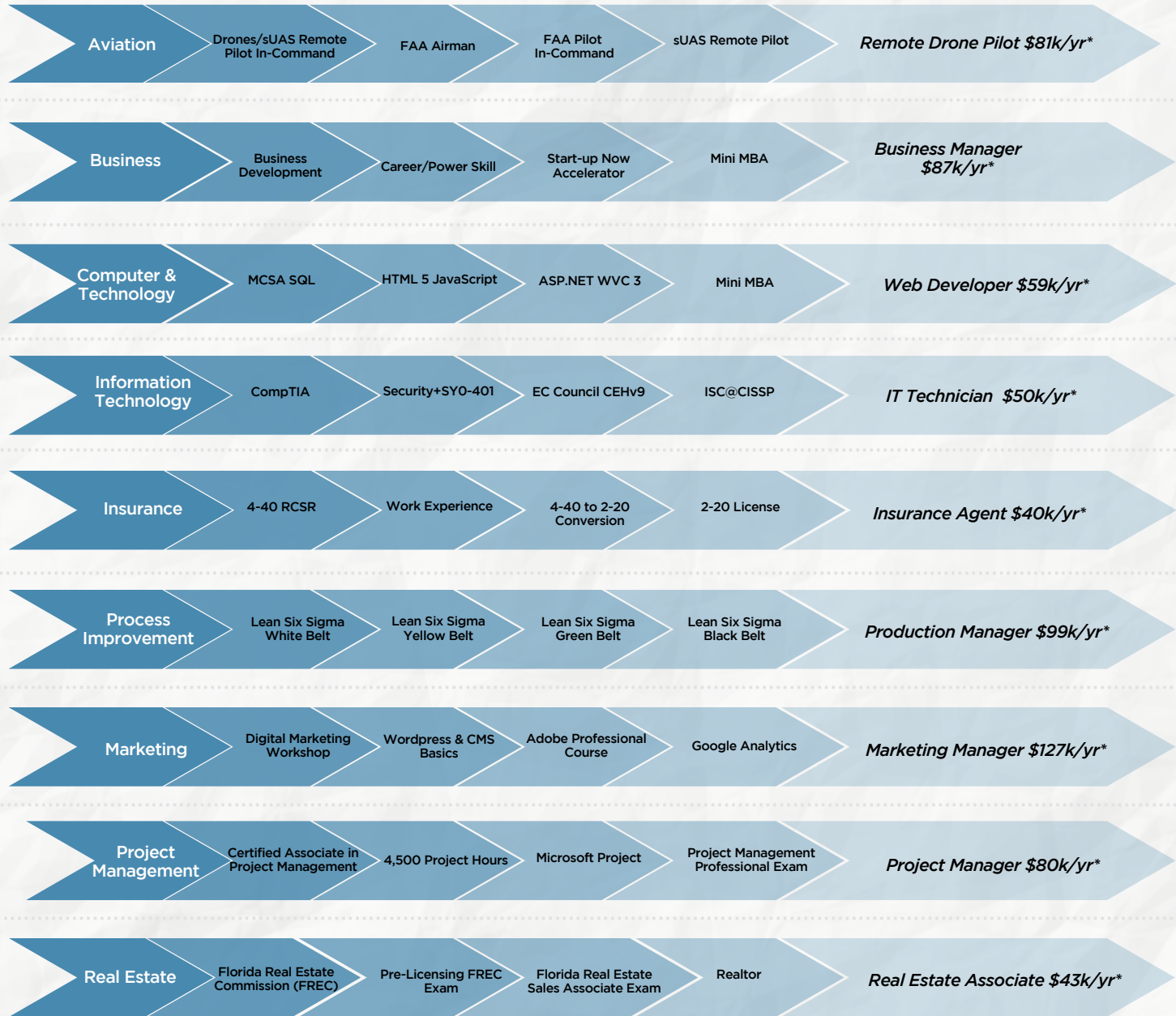
B Blended Classroom **S** Self-guided with Instructor Self-paced **O** Online Self-paced **C** On-campus Classroom





FINISH
IN 1 TERM

Advance Your Career, Accelerated Skills Training



* Median salary in Broward County based on Lightcast, 2023

Learn your way

B Blended Classroom
S Self-guided with Instructor
O Online Self-paced
C On-campus Classroom





Register between January 2 - May 15

Register now!

Microlearning is your gateway to quick wins. Pay and Start Immediately!

Discover skills offered in an easily digestible and informative format. These short sessions have relevant solutions you can immediately apply in your workplace. **Register now!**

SROI (under 6 HRS.) S	
SROI - Certificate (10 part Series)	30 min.
SROI - Framework- Theory of Change	10 min.
SROI - Fast Track Your SROI	10 min.
SROI Introduction	30 min.
SROI Essentials	3 hrs.
SROI Value vs Impact	6 hrs.

Business Development (under 6 HRS.) S	
Mindfulness - Meditation for the Workplace	10 min.
Leading in a Time of Crisis	30 min.
Managing Virtual & Remote Teams w/ "MS Teams"	30 min.
First-Time Supervisor	6 hrs.
Human Resource Department of One	6 hrs.
Corporate Events & Special Events	6 hrs.

Process Improvement (under 30 mins.) S	
Process Improvement: Project Execution	30 min.
Process Improvement - PDCA	10 min.
Process Improvement: 8 Wastes	30 min.
Process Improvement: A3	30 min.
Process Improvement: Six Sigma Intro	30 min.
Process Improvement: Fishbone	30 min.

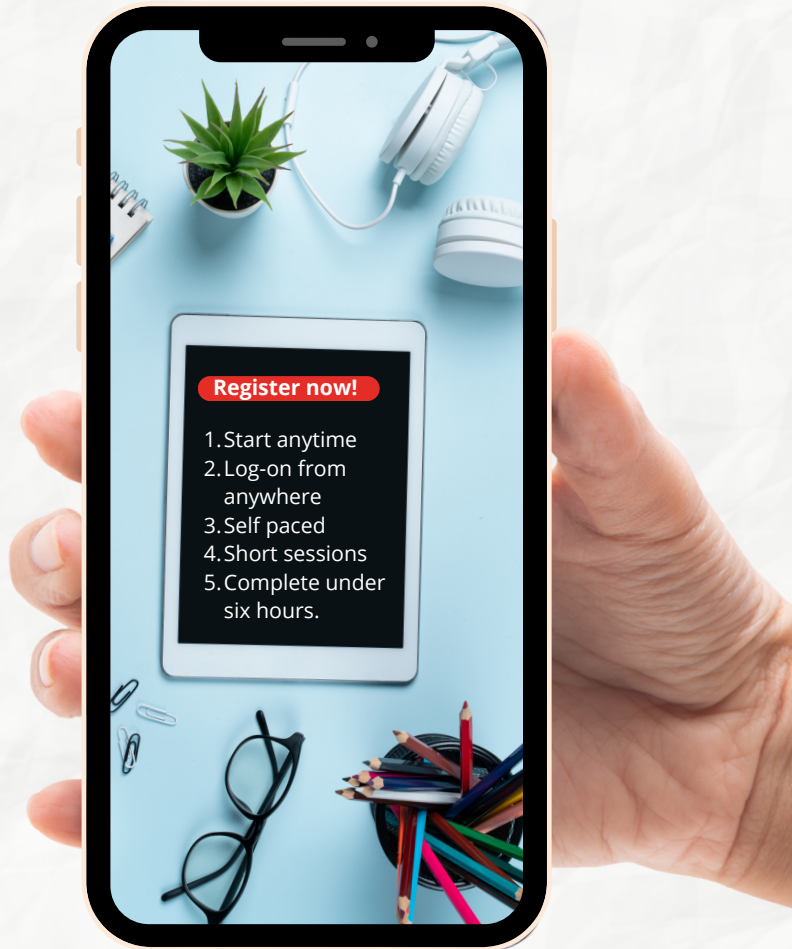
Lean Six Sigma (30 mins.) S	
Six Sigma Intro	30 min.
Six Sigma Yellow Belt Fundamentals	30 min.
DMAIC: Analyze	30 min.
DMAIC: Control	30 min.
DMAIC: Define	30 min.
DMAIC: Improve	30 min.
DMAIC: Measure	30 min.

Micro-Learning Labs (60 mins.) S B	
Web-based Searches/Internet Etiquette	60 mins.
Social Media – Your Professional Brand	60 mins.
Information (Web) Security-Intro	60 mins.
Microsoft Excel Tips and Tricks	60 mins.
Microsoft PowerPoint Basics	60 mins.

Human Resources (Under 6 HRS.) S	
Strategic HR Management	5 hrs.
Organizational Leadership	3 hrs.
Talent & Performance Management	5 hrs.
Training & Development	3 hrs.
Employee Benefits	4 hrs.
Employee Relations & Employee Life Cycle	2 hrs.

Five Reasons to Enroll

1. Bite-sized lessons for instant understanding.
2. Learning into your busy schedule effortlessly.
3. Acquire specific skills without overwhelming information.
4. Learn on-the-go for ultimate convenience.
5. Achieve proficiency through short, impactful sessions.



LEARN IN-DEMAND SKILLS - REGISTER, PAY AND START IMMEDIATELY

One-day online sessions perfect to focus on specific challenges that demands critical thinking skills

Effective Emails, Memo, and Letters O

Communicating clearly and concisely in written formats like email, memos, and letters is very important in a workplace setting. Improve your use of these common business communication vehicles by providing best practices and effective tips and techniques.

EDI 0820	5 HRS.		\$79
MTWRF 01/16	24/7	eLearning	ME
MTWRF 02/13	24/7	eLearning	ME
MTWRF 03/18	24/7	eLearning	ME

Virtual Teamwork O

Remote work settings create new opportunities and unique challenges for team members. While virtual environments allow for greater flexibility, team-oriented activities can get lost. The collaboration, creativity, and teamwork that seems to flow naturally in an in-person setting can often feel stilted in a virtual environment. This course examines the pros and cons of remote teamwork and provides strategies for overcoming challenges and promoting team success. Other topics include communication best practices, handling conflict, and goal setting.

EDI 0820	5 HRS.		\$79
MTWRF 01/16	24/7	eLearning	ME
MTWRF 02/13	24/7	eLearning	ME
MTWRF 03/18	24/7	eLearning	ME

12 Steps to a Successful Job Search O

Learn how to get the job you want quickly, easily, and in any economy from a world-renowned author and career advisor. This course will help you identify the job that is best for your needs and provide complete step-by-step instructions on how to land it.

EDI 0000	24 HRS.		\$135
MTWRF 01/17-03/08		OnDemand	E2G
MTWRF 02/14-04/05		OnDemand	E2G
MTWRF 03/13-05/03		OnDemand	E2G

Individual Excellence: Soft Skills/Power Skills O

The Individual Excellence course will teach you twelve vital career-enhancing skills. You will establish a clear career path and use skills like interpersonal communication and time management to achieve your goals. You will also learn how to utilize your creativity and problem-solving skills to work through adversity.

EDI 0615	24 HRS.		\$135
MTWRF 01/17-03/08		OnDemand	E2G T8530
MTWRF 02/13-04/05		OnDemand	E2G T8530
MTWRF 03/18-05/03		OnDemand	E2G T8530

Computer Skills for the Workplace O

Confidently apply for jobs knowing that you possess the computer skills needed to perform on the job. This course includes a great introduction to Windows 10 and Office 365 so that you can prosper in a modern workplace.

EDI 0615	24 HRS.		\$135
MTWRF 01/17-03/08		OnDemand	E2G T9264
MTWRF 02/14-04/05		OnDemand	E2G T9264
MTWRF 03/13-05/03		OnDemand	E2G T9264

Financial Literacy O

Set clear financial goals, make the right investments, and increase your financial security. This course will help you gain control over the financial impact of your choices with tools that are useful, realistic, and easy to work into your regular routine.

EDI0660	24HRS.		\$699
Email ce@broward.edu to register.			

Effective Business Writing O

Improve your career prospects. Identify gaps and eliminate problem areas in your writing skills by developing professional documents. Correct gaps in your writing and reach your full potential!

EDI 0820	5 HRS.		\$99
MTWRF 01/16	24/7	eLearning	ME
MTWRF 02/13	24/7	eLearning	ME
MTWRF 03/18	24/7	eLearning	ME

Business Communication Certificate O

Communicating clearly and concisely in written and oral formats is critical to your professional success. From clarifying and structuring your ideas to designing the PowerPoint slides that will best complement them, the techniques, interactive exercises, and checklists.

EDI 0820	25 HRS.		\$299
MTWRF 01/16	24/7	eLearning	ME
MTWRF 02/13	24/7	eLearning	ME
MTWRF 03/18	24/7	eLearning	ME

Effective Public Speaking O

Be an effective public speaker by discovering how to talk confidently and persuasively to both large and small groups. Equip yourself with the skills you need to communicate with ease and authority.

EDI 0820	5 HRS.		\$99
MTWRF 01/16	24/7	eLearning	ME
MTWRF 02/13	24/7	eLearning	ME
MTWRF 03/18	24/7	eLearning	ME

Communicating Collaboratively O

In most organizational settings, you'll be expected to work in teams. At times, your team members may not be physically in the same office with you. Improve your collaborative communication by providing best practices and effective tips and techniques.

EDI 0820	5 HRS.		\$79
MTWRF 01/16	24/7	eLearning	ME
MTWRF 02/13	24/7	eLearning	ME
MTWRF 03/18	24/7	eLearning	ME

Critical & Design Thinking O

Design thinking is a continuous improvement process that helps create practical and creative ways to solve problems. Learn the benefits of critical and design thinking and master the tools to strategize and generate innovation.

EDC0149	15HRS.		\$699
Email ce@broward.edu to register.			

Think like a Boss O

Learn the concepts of Business acumen and gain an understanding of handling business opportunities and risks quickly, leading to successful outcomes. Gain critical tools to be a savvy business professional in today's workplace. Course analyzes factors that drive company's performance, finances, and strategy. Also covered, leading effectively, identifying risks and influencing others.

EDI0336	6HRS.		\$99
Email ce@broward.edu to register.			

ONLINE: We bring courses to you. Anytime, anywhere

3-Month Pass* | \$349 for 3 Online Courses within 3 months

4- Months Pass* | \$399 for 4 Online Courses within 4 months

*Pass can be used by same or different student. Info: ce@broward.edu

Register now!



Collaboration at Work S EDE0223 6HRS. \$199

Learn healthy tools to collaborate with your team, coworkers, and supervisor. Uncover workplace personalities that disrupt workplace collaboration and proven tools for managing difficult situations. Course covers:

- Collaborate with Authenticity
- Complex Situations
- Four Employee Types
- Steering Others



Communication S ME 24HRS. \$299

Communicating clearly and concisely in written and oral formats is critical to your professional success. From clarifying and structuring your ideas to designing the PowerPoint slides that will best complement them. Course covers:

- Effective Business Writing
- Effective Presentations
- Effective Public Speaking
- Effective Emails, Memo



Professional Career Skills S EDC0103 9HRS. \$499

Develop the professional skills every hiring manager is looking for! Set yourself apart by enhancing your professional and interpersonal skills. Course covers:

- Strengthen Relationship
- Solution focus
- Active Listening
- Unique perspectives



Business Acumen S EDI0336 6HRS. \$99

Think like the boss! Learn the concepts of Business acumen and gain an understanding of handling business opportunities and risks, quickly, leading to successful outcomes. Course covers:

- Define and Analyze
- Business Proficiency
- Financial Literacy
- Cultivating



Critical Thinking S EDC0149 15HRS. \$699

Design thinking is a continuous improvement process that helps create practical and creative ways to solve problems. Learn the benefits of critical and design thinking and master the tools to strategize and generate innovation. Course covers:

- Reasoning, and Logic
- Overcome Barriers
- Systemic Problem-Solving
- Reasoning Fallacies



Finance S EDI0850 9HRS. \$99

Some people call Accounting the language of business. To be able to use this language, you need to have a good grasp of key financial concepts and fundamentals. Course covers:

- Accounting Equation
- Cash Flow Analysis
- Financial Statement
- Financial Planning

WORKOUT YOUR SOFT SKILLS MUSCLES S

Skill development is like a sport.

Our Artificial Intelligence (AI) Digital Role Play supports you with the workout needed.

IMPROVE SOFT SKILLS THROUGH CONVERSATIONS.

Build strong interpersonal skills and boost your confidence and self-awareness while communicating with peers by practicing what you already know about workplace professionalism.

- Practice real life interpersonal situations
- Learn how others perceive what you say
- Build habits that lead to positive results
- Conversation-based training
- Sales 101 Negotiations
- Time Management Emotional Awareness



Earn your Micro Credentials & **DIGITAL BADGE**



Steps to share your accomplishments with colleagues and employers

- Step 1: Select and Enroll in a Micro- Credential course.
- Step 2: Complete Requirements and receive Micro-Credential.
- Step 3: Earn your Badge.
- Step 4: Share your Micro-Credential & Digital Badge on: LinkedIn and other social media platforms, Resume, embed in your e-mail signature.



\$
Tuition Assistance
Options: pg.39



Click the "Enrollment" button to browse courses, tuition and additional details

IT & COMPUTERS
Enroll

ALLIED HEALTH
Enroll

BUSINESS/PROFESSIONAL
Enroll

- Cyber Security Expert
- CEH (v12)- Certified Ethical Hacker
- Certified Information Systems Auditor
- Web Design Professional
- Full Stack Developer - MEAN Stack
- Certified Information Security Manager
- Computer Hacking Forensics Investigator
- Certified AWS Developer
- Certified AWS Cloud Practitioner
- AI & Machine Learning Certification
- Big Data Hadoop and Spark Developer

Register, pay and begin immediately

- Behavior Technician
- Dialysis Technician
- Pharmacy Technician(CPhT)
- Physical Therapy Aide
- Veterinary Assistant
- Health Unit Coordinator
- Medical Billing and Coding
- Medical Office Manager
- Medical Transcriptionist
- Sterile Processing
- Surgical Technologists
- Medical Lab Assistant
- Healthcare IT (HIT)

Register, pay and begin immediately

- Certified Financial Health Counselor
- Virtual Hybrid Event Planning
- Certified Brand Strategist
- Sales Manager
- Business Operations Specialist
- Certified Business Analysis Professional
- Nonprofit Manager
- Blueprint Reading Basics
- AutoCAD Certification
- Revit Certification
- Lean Six Sigma Belt series
- Insurance Accredited Claims Adjuster
- Florida Real Estate License

Register, pay and begin immediately

ONLINE: We bring courses to you. Anytime, anywhere
 3-Month Pass* | \$349 for 3 Online Courses within 3 months
 4- Months Pass* | \$399 for 4 Online Courses within 4 months
 *Pass can be used by same or different student. Info: ce@broward.edu

EARN COLLEGE CREDIT FOR WHAT YOU ALREADY KNOW - If you have obtained industry certifications or licensures that align with Broward College's degree programs, you can earn college credits. For more information about Credit for Prior Learning contact cpl@broward.edu

Professional Credentials include:





Entrepreneurship Certificate O

Explore the different aspects of entrepreneurship and how entrepreneurs create and establish successful new ventures. Learn what types of resources are available to aspiring entrepreneurs, and where can you find them. Gain answers to important questions and essential resources for success.

EDI 0820	25 HRS.		\$599
MTWRF 01/16	24/7	eLearning	ME
MTWRF 02/13	24/7	eLearning	ME
MTWRF 03/18	24/7	eLearning	ME

Accounting and Finance for Entrepreneurs O

Understand financial accounting basics, financial statements, and key issues in finance, broadly defined as financial or monetary activity that involves a company.

EDI 0820	5 HRS.		\$129
MTWRF 01/16	24/7	eLearning	ME
MTWRF 02/13	24/7	eLearning	ME
MTWRF 03/18	24/7	eLearning	ME

Business Law for Entrepreneurs O

Learn relevant business laws that can make or break success. This course covers basic laws for entrepreneurs, legal structures for a new venture, intellectual property, employment law, contracts, government regulation, and personal & real property.

EDI 0820	5 HRS.		\$129
MTWRF 01/16	24/7	eLearning	ME
MTWRF 02/13	24/7	eLearning	ME
MTWRF 03/18	24/7	eLearning	ME

Strategic Marketing for Entrepreneurs O

Learn strategic marketing that entrepreneurs face while starting a new venture or business and highlights market acceptance during stages of the entrepreneurial process.

EDI 0820	5 HRS.		\$129
MTWRF 01/16	24/7	eLearning	ME
MTWRF 02/13	24/7	eLearning	ME
MTWRF 03/18	24/7	eLearning	ME

Workplace Law Essentials Value Suite O

Earn the fundamentals of employment law, workers compensation law, and the laws protecting both employees and employers in a straightforward, easy-to-understand way.

EDI 0820	48 HRS.		\$230
MTWRF 01/17	OnDemand with Instructor	E2G	E2G
MTWRF 02/14	OnDemand with Instructor	E2G	E2G
MTWRF 03/13	OnDemand with Instructor	E2G	E2G

Small Business Management Introduction O

Learn the basics of running a successful business, including planning, finance, HR, marketing, and customer care, to effectively tackle problems and seize opportunities.

EDI 0820	3 HRS.		\$79
MTWRF 01/16	24/7	eLearning	ME
MTWRF 02/13	24/7	eLearning	ME
MTWRF 03/18	24/7	eLearning	ME

Advertising & Outreach Specialist O

Learn how to create advertising pieces for print and digital media. This course will teach you to develop and execute all stages of an advertising campaign, from writing ad copy to story-boarding and measurement.

EDI 0615	100 HRS.		\$1,295
MTWRF 01/16	24/7	eLearning	E2G
MTWRF 02/13	24/7	eLearning	E2G
MTWRF 03/18	24/7	eLearning	E2G

Leadership Suite O

Learn essential skills for successful leadership, even if you're not in a leadership role yet. Learn to make decisions based on the information you have and deal with difficult bosses and co-workers.

EDI 0820	96 HRS.		\$480
MTWRF 01/17-03/08	OnDemand	E2G	B8507
MTWRF 02/14-04/05	OnDemand	E2G	B8507
MTWRF 03/13-05/03	OnDemand	E2G	B8507

Budgeting and Financial Analysis for Small Businesses O

Creating a budget and analyzing financial data is crucial for small business success. Learn how to prepare budgets, analyze variances, and interpret financial statements

EDI 0820	5 HRS.		\$99
MTWRF 01/16	24/7	eLearning	ME
MTWRF 02/13	24/7	eLearning	ME
MTWRF 03/18	24/7	eLearning	ME

Small Business Marketing O

Learn the basics of small business marketing, including social media, content marketing, and search engine optimization. This course helps you effectively promote your products/services and reach the right audience on a limited budget.

EDI 0820	3 HRS.		\$79
MTWRF 01/16	24/7	eLearning	ME
MTWRF 02/13	24/7	eLearning	ME
MTWRF 03/18	24/7	eLearning	ME

Certified Virtual Assistant O

Master the skills of a virtual assistant in this virtual assistant training course and start your own virtual assistant business. Learn how to set up your virtual assistant packages, rates, and contracts.

EDI 0820	240 HRS.		\$2,995
MTWRF 01/16	24/7	eLearning	E2G
MTWRF 02/13	24/7	eLearning	E2G
MTWRF 03/18	24/7	eLearning	E2G

Executive Assistant O

Learn strategic marketing that entrepreneurs face while starting a new venture or business and highlights market acceptance during stages of the entrepreneurial process.

EDI 0820	450 HRS.		\$3,595
MTWRF 01/16	24/7	eLearning	E2G
MTWRF 02/13	24/7	eLearning	E2G
MTWRF 03/18	24/7	eLearning	E2G

Leaders and Work-Life Balance O

This course looks at methods and techniques to reconcile work and family. You will also consider the question of personal fulfillment and the needs and demands of leadership.

EDI 0820	3 HRS.		\$79
MTWRF 01/16	24/7	eLearning	ME
MTWRF 02/13	24/7	eLearning	ME
MTWRF 03/18	24/7	eLearning	ME

Project Management for Small Businesses O

Small business management involves overseeing both small and large projects. Not all projects require extensive planning, but project management techniques can help teams of all sizes meet their goals more efficiently

EDI 0820	3 HRS.		\$79
MTWRF 01/16	24/7	eLearning	ME
MTWRF 02/13	24/7	eLearning	ME
MTWRF 03/18	24/7	eLearning	ME

Leading Teams O

This introductory-level course for managers or anyone interested in leading teams, addresses the key issues surrounding leadership in a team environment.

EDI 0820	5 HRS.		\$79
MTWRF 01/16	24/7	eLearning	ME
MTWRF 02/13	24/7	eLearning	ME
MTWRF 03/18	24/7	eLearning	ME

Learn your way

B Blended Classroom **S** Self-guided with Instructor **O** Online Self-paced **C** On-campus Classroom





Small Business Management **O**

Gain an understanding of the most critical areas in managing and operating your own small business.

EDI 0820	30 HRS.			\$499
MTWRF 01/16	24/7	eLearning	ME	
MTWRF 02/13	24/7	eLearning	ME	
MTWRF 03/18	24/7	eLearning	ME	

Business Writing **O**

Develop powerful written documents that immediately draw readers in and keep them motivated to continue until your very last, well-chosen word.

EDI 0615	24 HRS.			\$135
MTWRF 01/17-03/08	OnDemand	E2G	T14512	
MTWRF 02/14-04/05	OnDemand	E2G	T14512	
MTWRF 03/13-05/03	OnDemand	E2G	T14512	

Supervision & Management **O**

Master the basics of communication to become a more effective manager or supervisor. Discover various traits and how they impact your ability to get the job done.

EDI 0615	24 HRS.			\$135
MTWRF 01/17-03/08	OnDemand	E2G	T9265	
MTWRF 02/14-04/05	OnDemand	E2G	T9265	
MTWRF 03/13-05/03	OnDemand	E2G	T9265	

Business Operations Specialist **O**

Learn the fundamentals of business management and operational planning with a veteran supply chain manager. You will gain key operational skills, including risk management and quality control.

EDI 0910	200 HRS.			\$1,895
MTWRF 01/17	24/7	eLearning	E2G	
MTWRF 02/14	24/7	eLearning	E2G	
MTWRF 03/18	24/7	eLearning	E2G	

Business Analysis **O**

Learn to identify needs and requirements, and then designing and executing solutions to business problems.

EDI 0820	25 HRS.			\$599
MTWRF 01/16	24/7	eLearning	ME	
MTWRF 02/13	24/7	eLearning	ME	
MTWRF 03/18	24/7	eLearning	ME	

Nonprofit Starting Your Own Organization **O**

Learn key steps in getting a nonprofit off the ground, including incorporating your organization, applying for tax-exempt status and drafting a business plan.

EDI 0834	4 HRS.			\$79
MTWRF 01/16	24/7	eLearning	ME	
MTWRF 02/13	24/7	eLearning	ME	
MTWRF 03/18	24/7	eLearning	ME	

Technical Writing **O**

Learn the secrets of successful technical writers, including technical writing conventions, interviewing skills, desktop publishing, and formatting techniques.

EDI 0615	24 HRS.			\$135
MTWRF 01/17-03/08	OnDemand	E2G	T9273	
MTWRF 02/14-04/05	OnDemand	E2G	T9273	
MTWRF 03/13-05/03	OnDemand	E2G	T9273	

Leadership in a Nonprofit Organization **O**

Examine leadership theories focused in the nonprofit sector, including the leadership shortage and possible solutions.

EDI 0834	3 HRS.			\$99
MTWRF 01/16	24/7	eLearning	ME	
MTWRF 02/13	24/7	eLearning	ME	
MTWRF 03/18	24/7	eLearning	ME	

QuickBooks Online Series **O**

Learn key features of QuickBooks Online, so you can gain hands-on experience creating invoices, receipts, and statements; track payables, inventory, and receivables; generating reports; and more. In the Intermediate section, you will learn how to set up your accounts for different types of businesses, enter budgets, and how to track situations in which the owner uses or invests company funds.

EDI 0615	48 HRS.			\$250
MTWRF 01/17-03/08	OnDemand	E2G	B9859	
MTWRF 02/14-04/05	OnDemand	E2G	B9859	
MTWRF 03/13-05/03	OnDemand	E2G	B9859	

Payroll Professional Certified **B**

Gain a solid understanding of advanced payroll skills necessary for experienced payroll professionals seeking compliance training, professional development, or CPP certification preparation.

EDI 0107	36 HRS.			\$699
MW 02/05-03/20	6:30pm-9:30pm	D2L	736057	

Personal Finance **O**

Gain control over the financial impact of your choices with tools that are useful, realistic, and easy to work into your regular routine.

EDI 0615	24 HRS.			\$135
MTWRF 01/17-03/08	OnDemand	E2G	T9238	
MTWRF 02/14-04/05	OnDemand	E2G	T9238	
MTWRF 03/13-05/03	OnDemand	E2G	T9238	

Income Tax Prep **B**

Attain the ability to prepare income tax returns for yourself and others. This comprehensive step-by-step program covers how to prepare individual income tax returns, understand current tax laws, and discover available tax software to process returns.

EDE 0718	15HRS.			\$149
MW 01/17-01/31	6:30pm-9:30pm	D2L	736064	
T R 02/27-03/12	6:30pm-9:30pm	D2L	736067	

Finance Essentials Certificate **O**

Learn how to calculate key financial management indicators, assess your organization's financial health by reviewing balance sheets, income statements, and statements of cash flow.

EDI 0000	19 HRS.			\$399
MTWRF 01/16	24/7	eLearning	ME	
MTWRF 02/13	24/7	eLearning	ME	
MTWRF 03/18	24/7	eLearning	ME	

Bookkeeper Certified **O**

Acquire the practical knowledge necessary to setup and maintain bookkeeping records: analyzing and recording transactions, balance sheets, general entry, and more.

EDI 0800	140 HRS.			\$2,195
MTWRF 01/16	24/7	eLearning	ME	
MTWRF 02/13	24/7	eLearning	ME	
MTWRF 03/18	24/7	eLearning	ME	

Nonprofit Organization Budgeting **O**

Gain an understanding of the uses and functions of budgets and the relationship between strategic and tactical budgeting.

EDI 0831	3 HRS.			\$79
MTWRF 01/16	24/7	eLearning	ME	
MTWRF 02/13	24/7	eLearning	ME	
MTWRF 03/18	24/7	eLearning	ME	

Nonprofit Organizations Fundraising **O**

To help finance operating budgets, nonprofits must raise money every year and manage special projects to facilitate this.

EDI 0833	4 HRS.			\$150
MTWRF 01/16	24/7	eLearning	ME	
MTWRF 02/13	24/7	eLearning	ME	
MTWRF 03/18	24/7	eLearning	ME	



START TODAY!
COMPLETE IN 6 MONTHS



82% of HR Executives agree that SHRM certification adds the credibility needed to advance your career in HR.



IN PARTNERSHIP WITH
SHRM[®]
BETTER WORKPLACES
BETTER WORLD™

Human Resources: SHRM CP/SCP - Certification B
SHRM Certified Professional (SHRM-CP) or SHRM Senior Certified Professional (SHRM-SCP) credential establishes you as a recognized expert in the HR field. Course prepares you for the SHRM-CP and SHRM-SCP certification examinations, built upon one singular body of applied skills and knowledge designed to elevate the HR profession around the world. The SHRM Learning System in digital format is included.

EDI 0913	36 HRS.	\$1,199
MW 02/05-03/20	6:00pm-9:00pm	D2L 736065
TR 03/26-05/02	6:00pm-9:00pm	D2L 737529

SHRM Essentials O
Embark on a transformative journey with this foundational overview of HR practices and behaviors. Developed by SHRM, the world's largest HR association, this program offers real-world applications and scenarios to master fundamental HR issues. It sets the stage for those interested in pursuing SHRM-CP/SHRM-SCP certification, although it does not directly prepare for the exam. Learn the standards and competencies required for effective HR professionals globally. Elevate your career, enhance your skills, and become a force in the dynamic world of Human Resources!

EDI 0429	15 HRS.	\$499
TR 04/02-04/16	6:00pm-9:00pm	D2L 736799

Human Resources Talent Management B
Learn topics: the hiring process, how to locate quality employees in a competitive labor market, how to attract and retain top talent, employee rights and the legal side of Human Resources.

EDI 0615	72 HRS.	\$365
MTWRF 01/17-03/08	OnDemand	E2G B9164
MTWRF 02/14-04/05	OnDemand	E2G B9164
MTWRF 03/13-05/03	OnDemand	E2G B9164

Human Resources Employment Law B
Learn the difference between employees and independent contractor, employee benefits, effective hiring, evaluation and termination procedures, ways to resolve employment disputes, discrimination and union laws, and workplace safety rules.

EDI 0615	24 HRS.	\$135
MTWRF 01/16-03/08	OnDemand	E2G T9650
MTWRF 02/13-04/05	OnDemand	E2G T9650
MTWRF 03/13-05/03	OnDemand	E2G T9650

Earn your Micro Credentials & **DIGITAL BADGE**



- Steps to share your accomplishments with colleagues and employers**
- Step 1: Select and Enroll in a Micro- Credential course.
 - Step 2: Complete Requirements and receive Micro-Credential.
 - Step 3: Earn your Badge.
 - Step 4: Share your Micro-Credential & Digital Badge on: LinkedIn and other social media platforms, Resume, embed in your e-mail signature.



Social Return On Investment (SROI)

Learn how to measure the value of social change and the social return on investment generated by our program, organization or project.

Email ce@broward.edu to unlock
(Tuition Free program)

Social Return on Investment- TEN PART SERIES **B**

This series will introduce you to social return on investment and how it can help your business. Topics include Impact Measurement, the Seven Principles of SROI, who can use SROI, measuring impact, and many more. (10 part series)

EDE 0408	Free	01/08 - 05/05	On-Demand	Course	Duration
				Series 1: SROI – Intro	2 mins
				Series 2: SROI – Impact Measurement	2 mins
				Series 3: SROI – What is Social Return on Investment	3 mins
				Series 4: SROI – Seven Principals of SROI	3 mins
				Series 5: SROI – Help Me	3 mins
				Series 6: SROI – Who Can Use SROI	5 mins
				Series 7: SROI – Analysis	3 mins
				Series 8: SROI – What is Value	4 mins
				Series 9: SROI – Calculate to Social Benefits	6 mins
				Series 10: SROI – Measuring Impact	5 mins

Social Return on Investment – Intro **S**

Explore the principles and methodologies of Social Return on Investment (SROI) and their application in decision-making and reporting. This course is tailored for those seeking insights into how SROI contributes to value creation.

EDI 0846	30 MIN.		\$99
MTWRF	02/01-02/15	D2L	737412

SROI Essentials **S**

Explore the Social Return on Investment (SROI) framework in our Essentials program. Learn to measure value beyond finances, addressing broader societal, environmental, and economic impacts. Idea for those seeking to understand SROI's role in fostering change, this program also paves the way for advanced SROI Practitioner training.

EDI 0848	3 HRS.		\$299
MTWRF	02/16-03/01	D2L	737413

SROI: Social Value vs Social Impact – Intro **S**

Explore SROI in our Social Value vs. Social Impact course. Learn the distinctions between the two and utilize our Social Impact Calculator for project assessments. Perfect for individuals aiming to understand SROI, drive change, and prepare for Practitioner training. Also suitable for those focused on enhancing organizational value.

EDI 0849	6 HRS.		\$499
MTWRF	03/11-03/25	D2L	737411

Supply Chain SCPro™ Certifications

The Center for Supply Chain Education at Broward College and the Council of Supply Chain Professionals (CSCMP) have partnered to deliver the SCPro™ Fundamentals Certifications program. Through this program you have easy access to online education in the eight cornerstones of Supply Chain Management to prepare for the corresponding certification exam.

Supply Chain Management Principles/w Forklift	B
EDI 0879	24 HRS.
MWF	03/13-03/29 1:00pm-4:00pm YMCA 736066

SCPro™ Fundamentals Certification Bundle	B
EDI 0671	120 HRS.
Email ce@broward.edu to register.	
	\$2,080

Eight Certifications

1. Management Principles/w Forklift
2. Customer Service Operations
3. Demand Planning
4. Inventory Management
5. Manufacturing & Service Operations
6. Supply Management & Procurement
7. Transportation Operations
8. Warehousing Operations



ONLINE: We bring courses to you. Anytime, anywhere

3-Month Pass* | \$349 for 3 Online Courses within 3 months

4- Months Pass* | \$399 for 4 Online Courses within 4 months

*Pass can be used by same or different student. Info: ce@broward.edu

Learn your way

B Blended Classroom
S Self-guided with Instructor
O Online Self-paced
C On-campus Classroom





Project Management Ready S

Start a career in project management with the PMI Project Management Ready™ certification. During this program, students will be immersed into the project management process to learn concepts and the industry. With the PMI Project Management Ready certification, students can immerse themselves in the project management industry and professionals while gaining a competitive edge. Students will receive voucher to take the PMI certification.

EDI 0332	24 HRS.	\$999
MTWR	01/29-02/08 9:30am-12:30pm	YMCA 736062
MTWR	04/10-04/23 9:30am-12:30pm	YMCA 736063
MTWR	04/15-04/25 9:30am-12:30pm	YMCA 736103

Project Management Professional - CAPM/PMP Preparation

Build your career! Project Management is an essential skill for working professionals. This program provides 35 contact hours of formal education as required by the Project Management Institute, Inc. (PMI), for eligibility for the Project Management Professional (PMP®), as well as for the Certified Associate Project Manager (CAPM®) certification. It is an instructor-led course designed for students that wish to secure either credential.

EDI 0915	250 HRS.	\$2,245
MTWRF	01/17 24/7 eLearning	E2G
MTWRF	02/14 24/7 eLearning	E2G
MTWRF	03/18 24/7 eLearning	E2G

Project Management @ e-Speed O

Learn to deal with the realities of managing projects at super sonic speeds despite truncated timelines, inadequate staffing, and skimpy budgets.

EDI 0615	24 HRS.	\$135
MTWRF	01/17-03/08 OnDemand	E2G T9638
MTWRF	02/14-04/05 OnDemand	E2G T9638
MTWRF	03/13-05/03 OnDemand	E2G T9638

Microsoft Project O

Learn to effectively plan, implement, and control projects using Microsoft Project 201/Office365. This course will help you master the basics to create and share a project schedule, track costs and resources, produce reports, and resolve problems to keep your projects on track.

EDI 0615	24 HRS.	\$147
MTWRF	01/17-03/08 OnDemand	E2G T9438
MTWRF	02/14-04/05 OnDemand	E2G T9438
MTWRF	03/18-05/03 OnDemand	E2G T9438

Agile Certified Practitioner (PMI-ACP) O

The PMI-ACP is PMI's fastest growing certification, and its no wonder. Organizations that are highly agile and responsive to market dynamics complete more of their projects successfully than their slower moving counterparts 75% versus 56% as shown in PMI Pulse of the Profession's report.

EDI 0926	24 HRS.	\$999
MTWRF	01/16 24/7 eLearning	SIMP
MTWRF	02/13 24/7 eLearning	SIMP
MTWRF	03/18 24/7 eLearning	SIMP

Risk Management O

When it comes to cybersecurity projects, there are many knowns and unknowns. Luckily, risk management professionals plan for all potential risks during a project's lifecycle. Learn to identify, assess, and mitigate project risks.

EDI 0760	50HRS.	\$695
MTWRF	01/17-03/08 OnDemand	E2G GES278
MTWRF	02/14-04/05 OnDemand	E2G GES278
MTWRF	02/13-05/03 OnDemand	E2G GES278

Earn Your Lean Six Sigma Belt! S



LEAN SIX SIGMA WHITE BELT O

EDI 0620 7 HRS. \$499
Email: ce@broward.edu



LEAN SIX SIGMA YELLOW BELT O

EDI 0653 14 HRS. \$699
TWRF Date TBA 1:00pm-4:30pm ME



LEAN SIX SIGMA GREEN BELT O

EDI 0619 40 HRS. \$999
On-Demand 01/08 - 05/05 24/7 ME



LEAN SIX SIGMA BLACK BELT O

EDI 0832 40 HRS. \$1,995
On-Demand 01/08 - 05/05 24/7 E2G

Lean Six Sigma Belt Series

Learn lean business concepts, strategies, tools and techniques to achieve desired quality outcomes for your organization. Yellow belt, Green belt, and Black belts are evidence of quality credentials that serves varied business sectors and industries. Gain a high-level understanding of the DMAIC methodology (Define, Measure, Analyze, Improve, and Control). Programs cover Lean principles while fostering a culture of continuous improvement for maximized performance in critical areas. Hands-on activities provide an opportunity to apply new skills to support, lead and deploy quality projects. Course assignments identify ways to eliminate waste and increase customer satisfaction.

Strategic PDU Bundle O

This bundle is designed to provide practitioners with many of the PDUs they need to fulfill their strategic PDU requirements. Learn conflict resolution, emotional intelligence, finance and budgets.

EDI 0615	11 HRS.	\$249
MTWRF	01/16 24/7 eLearning	ME
MTWRF	02/13 24/7 eLearning	ME
MTWRF	03/18 24/7 eLearning	ME

Operation Management O

Explore the fundamental concepts and theories practitioners will need to successfully guide operations in manufacturing and service organizations. Specific tools, techniques, and methodologies are presented to show their applicability to operational strategies.

EDI 8080	10 HRS.	\$299
MTWRF	01/17 24/7 eLearning	ME
MTWRF	02/14 24/7 eLearning	ME
MTWRF	03/18 24/7 eLearning	ME

Sustainable Management O

Sustainability refers to the use of ecosystems and their resources in a manner that satisfies current needs without compromising the needs or options of future generations. A sustainable business is one that generates profits for its owners, protects the environment, and improves the lives of the people with whom it interacts.

EDI 0880	15 HRS.	\$299
MTWRF	01/16 24/7 eLearning	ME
MTWRF	02/13 24/7 eLearning	ME
MTWRF	03/18 24/7 eLearning	ME

Digital Marketing Certificate B

Digital marketing helps organizations promote and sell products and services through online marketing methods such as social media messaging, website ads, Facebook marketing campaigns, Google Adwords, and more. It's vital to develop a marketing strategy that keeps up with technology. The content in this certificate aligns with the Online Marketing Certified Associate (OMCA) credential, which is offered by OMCP.

EDC 0287	9 HRS.	\$549
W 02/07-04/03	1:00pm-4:00pm	YMCA 736061

Marketing Certified Associate O

Earn your Marketing certification and master strategic issues, marketing methods and tactics, industry terminology, and best practices. This online and self-paced program provides comprehensive preparation for the Online Marketing Certified Associate (OMCA™) certification exam through examples, videos from industry-leading practitioners, interactive games, and review questions to ensure mastery of the material.

EDI 0796	36 HRS.	\$649
MTWRF 01/17	24/7 eLearning	ME
MTWRF 02/14	24/7 eLearning	ME
MTWRF 03/18	24/7 eLearning	ME

Marketing Your Business on the Internet O

In this hands-on course, you'll discover proven methods for establishing an Internet presence and building a brand identity. You'll learn to incorporate SEO, advertising, email, social media, and more to develop an effective Internet marketing plan for your business even with little money to spend.

EDI 0615	24 HRS.	\$135
MTWRF 01/17-03/08	OnDemand E2G	T9616
MTWRF 02/14-04/05	OnDemand E2G	T9616
MTWRF 03/13-05/03	OnDemand E2G	T9616

Advertising & Outreach Specialist O

Learn how to create advertising pieces for print and digital media. This course will teach you to develop and execute all stages of an advertising campaign, from writing ad copy to story-boarding and measurement.

EDI 0615	E2G	100 HRS.	\$1,295
MTWRF 01/17-03/08	OnDemand E2G	GES2042	
MTWRF 02/14-04/05	OnDemand E2G	GES2042	
MTWRF 03/13-05/03	OnDemand E2G	GES2042	

Web Analytics O

This course is designed to help learners develop a solid understanding of the basic concepts and techniques that they will encounter as practitioners in the web analytics field.

EDI 0615	3.5 HRS.	\$79
MTWRF 01/17	24/7 eLearning	ME
MTWRF 02/14	24/7 eLearning	ME
MTWRF 03/18	24/7 eLearning	ME

Google Ads O

This course will teach you how to navigate through the platform, set up and optimize campaigns, improve performance, apply advanced techniques, and analyze performance data.

EDI 0615	6HRS.	\$99
MTWRF 01/17	24/7 eLearning	ME
MTWRF 02/14	24/7 eLearning	ME
MTWRF 03/18	24/7 eLearning	ME

Search Engine Optimization O

Learn how to leverage both content and technical features in order to increase ranking in search results while also learning about the latest tools to measure performance.

EDI 0615	3HRS.	\$79
MTWRF 01/17	24/7 eLearning	ME
MTWRF 02/14	24/7 eLearning	ME
MTWRF 03/18	24/7 eLearning	ME

Effective Selling O

Discover how you can easily convert a potential customer into a long-term asset. This course will help you lay the groundwork for repeat business and your future success with knowledge, planning skills, communication techniques, and the understanding of human nature.

EDI 0615	24 HRS.	\$135
MTWRF 01/17-03/08	OnDemand E2G	T9629
MTWRF 02/14-04/05	OnDemand E2G	T9629
MTWRF 03/13-05/03	OnDemand E2G	T9629

Sales Training Suite O

In good times or tough ones, companies never stop looking for sales representatives who can help them meet their financial goals. A good salesperson can have a long, successful career in any industry across the globe. This series will provide you with the tools you need to communicate effectively with clients as you build rapport and create an environment of trust. You'll also learn effective sales techniques that will help you not only convert new customers but also turn them into long-term assets.

EDI 0615	72 HRS.	\$345
MTWRF 01/17-03/08	OnDemand E2G	B8598
MTWRF 02/14-04/05	OnDemand E2G	B8598
MTWRF 03/13-05/03	OnDemand E2G	B8598

Sales Manager Certificate O

Master the theories behind effective sales management. The Sales Manager course consists of two parts, one focusing on the role of sales representative and the other on the role of sales management. Explore sales mechanics ranging from product knowledge and customer relationships to situational sales and effective selling techniques while preparing for a sales manager position. Learn how to lead a sales team, how to create and implement a sales plan, how to identify and qualify prospects, and more.

EDI 0615	200 HRS.	\$1,995
MTWRF 01/17	24/7 eLearning	E2G GES2043
MTWRF 02/14	24/7 eLearning	E2G GES2043
MTWRF 03/18	24/7 eLearning	E2G GES2043

Selling Like a Pro O

This completely online and self-paced one-module course utilizes Inc. Magazine's prize-winning editorial content to introduce basic concepts of sales, including the sales funnel and pipeline; lead qualification; presentations; metrics; and closing. The focus is on providing practical, hands-on advice to entrepreneurs and small-business people, including video segments with analysis and commentary from industry-leading practitioners and subject matter experts. The course also offers real-world examples, how-to lists and advice, interactive games, and review questions to ensure mastery of the material.

EDI 0615	3 HRS.	\$79
MTWRF 01/17	24/7 eLearning	ME
MTWRF 02/14	24/7 eLearning	ME
MTWRF 03/18	24/7 eLearning	ME

Paid Search (PPC) O

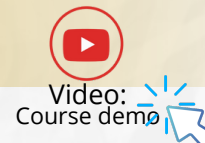
Explore search marketing, the search process, and the buying cycle. Learn how to set up a successful PPC account, how to set and measure goals, and how to optimize keyword usage using a variety of strategies. You will also examine components of effective ads and landing pages, how to optimize ad targeting, and when to use search or display advertising.

EDI 0615	4 HRS.	\$99
MTWRF 01/17	24/7 eLearning	ME
MTWRF 02/14	24/7 eLearning	ME
MTWRF 03/18	24/7 eLearning	ME

Learn your way

B
S
O
C
 Blended Self-guided Online On-campus
 Classroom with Instructor Self-paced Classroom





Computer Skills for the Workplace O

Learn step-by-step instructions to create Word documents, Excel spreadsheets, and PowerPoint presentations. Perform everyday tasks in each program: work with a flyer, a budget, and a presentation. This course provides you with a basic proficiency. Microsoft Office skills are important skills to have in any profession or workplace.

EDI 0540	12 HRS.	\$135
MTWRF 01/17-03/08	OnDemand	E2G T9264
MTWRF 02/14-04/05	OnDemand	E2G T9264
MTWRF 03/13-05/03	OnDemand	E2G T9264

Photoshop Introduction O

Whether you are a photographer, digital illustrator, graphic designer, or someone who wants to alter old family photos, you need to learn Adobe Photoshop. The Photoshop Creative Cloud course is filled with easy-to-follow, detailed step-by-step instructions that teach you how to edit and manipulate images and create basic compositions.

EDI 0127	24 HRS.	\$135
MTWRF 01/17-03/08	OnDemand	E2G T9198
MTWRF 02/14-04/05	OnDemand	E2G T9198
MTWRF 03/13-05/03	OnDemand	E2G T9198

Microsoft Excel-Pivot Tables O

Discover advanced techniques for pivot tables, like creating Timelines, calculated fields, and calculated items. You'll learn how to use Excel's Table function to efficiently manage changes to the pivot table's source data in order to avoid reporting mistakes when data is added or deleted.

EDI 0615	24 HRS.	\$145
MTWRF 01/17-03/08	OnDemand	E2G T9261
MTWRF 02/14-04/05	OnDemand	E2G T9261
MTWRF 03/13-05/03	OnDemand	E2G T9261

IC3 Digital Literacy GSS O

Learn literacy skills needed in today's tech-driven society. Discover the key topics based on learning objectives covered on the IC3 Digital Literacy Certification exams. The IC3 Certification provides students with a global, industry-recognized credential for employment.

EDI 0675	60 HRS.	\$545
MTWRF 01/17 24/7	eLearning	E2G
MTWRF 02/14 24/7	eLearning	E2G
MTWRF 03/13 24/7	eLearning	E2G

Microsoft Certified: Azure Administrator O

You will learn to manage Azure subscriptions and resources, implement and manage storage, deploy and manage virtual machines (VMs), configure and manage virtual networks, and manage identities.

EDI 0656	60 HRS.	\$1,995
MTWRF 01/17 24/7	eLearning	E2G
MTWRF 02/13 24/7	eLearning	E2G
MTWRF 03/13 24/7	eLearning	E2G

Introduction to Windows 11 O

Master the basic skills you need for Windows 11, the new operating system from Microsoft, which offers a more robust, more powerful, and unique computing experience. In this course, you will gain the foundation you need to start using Windows 11.

EDI 0615	24 HRS.	\$135
MTWRF 01/17-03/08	OnDemand	E2G T14364
MTWRF 02/14-04/05	OnDemand	E2G T14364
MTWRF 03/13-05/03	OnDemand	E2G T14364

Microsoft Access Certification Training O

Learn how to use Microsoft PowerPoint 2010 to create exciting slide presentations that include SmartArt, multimedia, animation, sound, charts, clip art, and hyperlinks.

EDI 0615	90 HRS.	\$595
MTWRF 01/17-03/08	OnDemand	E2G GES884
MTWRF 02/14-04/05	OnDemand	E2G GES884
MTWRF 03/13-05/03	OnDemand	E2G GES884

Adobe Video Design O

Prepare for the Adobe Certified Professional in Video Design exam by mastering Adobe Premiere Pro and Photoshop. Gain the skills needed to edit videos professionally and become a certified video design expert.

EDE0772	45 HRS.	\$1,495.00
TR 04/09-05/02	4:00pm-6:00pm	YMCA 736800

Excel (MOS) Microsoft Office Specialist B

If your organization uses lists of any kind, you need to know how to use Microsoft Excel. Earning Microsoft Office Specialist Excel Expert certification sets your professional skill set apart from other Excel users. The course will prepare you for the Microsoft Office Specialist: Microsoft Excel Expert exam.

EDC0183	70 HRS.	\$999
MWF 01/31-2/16	9:00am-12:00pm	YMCA 736059

Microsoft Office Specialist (MOS) Associate Certification Training O

Learn how to use Microsoft PowerPoint 2010 to create exciting slide presentations that include SmartArt, multimedia, animation, sound, charts, clip art, and hyperlinks.

EDI 0615	245 HRS.	\$1,695
MTWRF 01/16 24/7	eLearning	E2G GES889
MTWRF 02/13 24/7	eLearning	E2G GES889
MTWRF 03/13 24/7	eLearning	E2G GES889

Microsoft Office Specialist (MOS) Expert Certification Training O

This in-depth course will prepare you to sit for and pass the Microsoft Office Specialist (MOS) certification exams for Word, Excel, PowerPoint, Access, and Outlook and earn your Microsoft Office Specialist (MOS) Expert Certification.

EDI 0860	335 HRS.	\$2,295
MTWRF 01/17 24/7	eLearning	E2G GES890
MTWRF 02/14 24/7	eLearning	E2G GES890
MTWRF 03/13 24/7	eLearning	E2G GES890

PowerPoint for Business O

As technology continues to change the way that we engage in business communications, the art of presenting has also undergone a shift. Learn practical tips and examples for mapping the presentation, incorporating research, using templates, selecting visual elements, and delivering the presentation.

EDI 0860	3 HRS.	\$79
MTWRF 01/17 24/7	eLearning	ME
MTWRF 02/14 24/7	eLearning	ME
MTWRF 03/13 24/7	eLearning	ME

Microsoft Project O

Learn to effectively plan, implement, and control projects using Microsoft Project. Master the basics to create and share a project schedule, track costs and resources, produce reports, and resolve problems to keep your projects on track.

EDI 0615	120 HRS.	\$147
MTWRF 01/17	OnDemand	E2G T9438
MTWRF 02/14	OnDemand	E2G T9438
MTWRF 03/13	OnDemand	E2G T9438

QuickBooks Online Basics O

Introductory-level course designed to build a foundation of essential skills in QuickBooks® Online. Learners will develop a greater understanding of the basic bookkeeping and accounting functions that the software enables.

EDI 0860	5 HRS.	\$99
MTWRF 01/17 24/7	eLearning	ME
MTWRF 02/14 24/7	eLearning	ME
MTWRF 03/13 24/7	eLearning	ME

CompTIA A+ O

This course will prepare you for CompTIA A+ certification. The CompTIA A+ Certification Exam covers mobile devices, networking technology, hardware, virtualization and cloud computing and network troubleshooting.

EDI 0298	200 HRS.		\$1,995
MTWRF	01/17	24/7	eLearning E2G
MTWRF	02/14	24/7	eLearning E2G
MTWRF	03/18	24/7	eLearning E2G

CompTIA Network+ O

This course utilizes a Network+ lab simulator so you can have the opportunity to have hands-on experience working with networking configurations and troubleshooting instances, a key component to the CompTIA Network+ N10-008 certification exam.

EDC 0991	110 HRS.		\$1,895
MTWRF	01/17	24/7	eLearning E2G
MTWRF	02/14	24/7	eLearning E2G
MTWRF	03/18	24/7	eLearning E2G

CompTIA Security+ O

Successful completion of this course will allow you to assess an organization's security strength while recommending and implementing appropriate security solutions based on those assessments. Learners will be able to monitor and secure various security environments like cloud, mobile, and IoT (Internet of Things)

EDE 0304	80 HRS.		\$1,895
MTWRF	01/17	24/7	eLearning E2G
MTWRF	02/14-05/05	24/7	WEB 737475
MTWRF	03/18	24/7	eLearning E2G

CompTIA Cloud Essentials+ B

This course introduces technical and non-technical individuals to core cloud computing concepts and helps prepare learners to pass the CompTIA Cloud Essentials+ certification successfully. It is the only internationally recognized, vendor-neutral certification dedicated to cloud concepts.

EDE 0802	74 HRS.		\$1,695
MTWRF	01/17	24/7	eLearning - E2G
MTWRF	02/17-05/05	24/7	WEB 737473
MTWRF	03/18	24/7	eLearning E2G

CompTIA Project+ O

This certification validates project management skills to employers, both inside and outside the IT profession. The CompTIA Project+ certification also validates the communication and business skills you need to lead projects with confidence, complete projects on time and make sure you stay within budget.

EDI 0404	100 HRS.		\$1,695
MTWRF	01/17	24/7	eLearning E2G
MTWRF	02/14	24/7	eLearning E2G
MTWRF	03/18	24/7	eLearning E2G

AWS Technical Essentials for Cloud Practitioners B

This AWS Technical Essentials Certification Training course will introduce you to the fundamentals of the Amazon Web Services (AWS) cloud platform and ensure that you are fully proficient in identifying AWS terminologies, concepts, benefits, and deployment options to meet your business requirements.

GES3067	40 HRS.		\$1,995
MTWRF	01/17	24/7	eLearning E2G
MTWRF	03/18	24/7	eLearning E2G

AWS Technical Essentials - Intro B

EDI 0622	14 HRS.		\$699
TWR	02/13-02/27	9:30am-12:30pm	YMCA 736054

Watch how a Comp TIA A+ Certification can boost your career in IT



Coding

Sometimes referred to as software of computer programming, coding is a method of communicating with computers to perform specific tasks.

Full Stack Software Developer O

EDI 1000	650HRS.		\$5,495
MTWRF	01/17	24/7	eLearning E2G
MTWRF	02/14	24/7	eLearning E2G
MTWRF	03/13	24/7	eLearning E2G

Database Management O

Database management allows businesses with a large number of datasets to store, organize and retrieve data needed from a computer.

Oracle SQL and PL/SQL + Python O

Developer + Java Programmer

EDI 1000	375 HRS.		\$2,595
495			
MTWRF	01/17	24/7	eLearning E2G
MTWRF	02/14	24/7	eLearning E2G
MTWRF	03/13	24/7	eLearning E2G

Oracle SQL and PL SQL Developer O

EDI 1000	120 HRS.		\$995
MTWRF	01/17	24/7	eLearning E2G
MTWRF	02/14	24/7	eLearning E2G

EMERGING TECHNOLOGIES O

Emerging Technologies for Managers-Certificate \$199 - 9 HRS.

Managers must be familiar with emerging technologies their impact on their organizations and networks and how these developments can be leveraged to boost their workers' performance. Explore—artificial intelligence, robotics, and blockchain—and consider some of the potential legal and ethical concerns that may accompany their implementation in the workplace.

Additional Emerging Technology Courses \$99/ea. -3 HRS. O

- Manager's Guide to Artificial Intelligence
This course introduces learners to basic artificial intelligence concepts and trends. Artificial Intelligence plays an increasingly important role in many industries.

- Manager's Guide to Blockchain
Blockchain is on the forefront of emerging technologies and is the foundation of modern cryptocurrencies.

- Manager's Guide to Robotics
This course will introduce many of the concepts and metrics for management to consider when evaluating whether an investment in robotics is the right decision for the operation.

Learn your way

B Blended Classroom
S Self-guided with Instructor
O Online Self-paced
C On-campus Classroom



English Essentials O

This course is designed for students with Zero knowledge of English. It starts with the ABC's in a 1-2-3 (see it - Say - Use it) step-by-step technique. Each lesson will cover a specific grammar structure -- practiced through repetition exercises, dialogues, and writing exercises based on real life experiences.

EDE 0904 **42 HRS.** **\$395**

Contact us for information. ce@broward.edu

Intensity English I B

For non-English speakers who have limited knowledge of the English language. Students will learn very basic grammar, conversation, as well as reading and writing skills. New beginning vocabulary introduced.

EDC 0751 **30 HRS.** **\$395**

TR	01/16-02/15	6:30pm-9:30pm	D2L	736068
TR	02/20-03/28	6:30pm-9:30pm	D2L	736060

Intensity English II B

For the intermediate English language student who has prior knowledge for English. Students will learn more advanced grammar, conversation, writing and reading skills in English. Develop additional vocabulary.

EDC 0791 **30 HRS.** **\$395**

TR	04/09-05/02	6:00pm-9:30pm	D2L	737528
----	-------------	---------------	-----	--------

Writing For ESL O

Learn to write in English more effectively. Discover how to write clearly, logically, and cohesively, to apply what you have learned in any academic or work setting.

EDC 0920 **24 HRS.** **\$135**

MTWRF	01/17	24/7	eLearning	E2G
MTWRF	02/14	24/7	eLearning	E2G
MTWRF	03/18	24/7	eLearning	E2G

Let's Talk - English O

Focus on improving and practicing conversation skills by discussing current events and trending topics in an informal setting. Students will enhance their fluency and pronunciation skills through entertaining and stimulating discussion.

EDI 0300 **24 HRS.** **\$195**

Contact us for information. ce@broward.edu

French Conversation Basics O

Discover how easy it can be to learn common words and phrases for both leisure and business. Each lesson also includes cultural tips. Hand and body gestures mean different things in different cultures.

EDC 0615 **24 HRS.** **\$135**

MTWRF	01/17	24/7	eLearning	E2G
MTWRF	02/14	24/7	eLearning	E2G
MTWRF	03/18	24/7	eLearning	E2G

Spanish I O

For the student that wants to learn the Spanish language for business or personal use. Special emphasis is placed on basic verb usage, sentence structure and vocabulary development. Group participation fosters a friendly, as well as an academic classroom environment.

EDC 0187 **24 HRS.** **\$135**

MTWRF	01/17	OnDemand with Instructor	E2G
MTWRF	02/14	OnDemand with Instructor	E2G
MTWRF	03/13	OnDemand with Instructor	E2G

Sign Language O

Discover the fun of learning sign language and using your hands to communicate. Throughout, you'll learn by watching videos that demonstrate how to make the signs and how to incorporate facial expressions to communicate in this beautiful language. This course is taught using the best practices of the industry with a minimum of audio support.

EDC 0920 **24 HRS.** **\$135**

MTWRF	01/17	OnDemand with Instructor	E2G
MTWRF	02/14	OnDemand with Instructor	E2G
MTWRF	03/13	OnDemand with Instructor	E2G

Spanish for Healthcare Professionals O

<https://www.ed2go.com/browardcc/online-courses/learn-spanish-for-medical-professionals/>



Online Teaching Certificate O

This certificate offers instruction on the major models, tools, and techniques in creating and delivering online learning. It reviews the fundamentals of general learning theory and how it can be applied in practice, to online design and instruction, including a brief survey of the technology employed in online learning, best practices for teaching online, strategies for integrating narrative learning into an educational curriculum, and the basics of developing accessible online learning.

EDI 0615 **22 HRS.** **\$320**

MTWRF	01/17	24/7	eLearning	ME
MTWRF	02/14	24/7	eLearning	ME
MTWRF	03/18	24/7	eLearning	ME

Child Development Associate Training O

Childcare professionals play a vital role in early childhood development. This 100% course will train you for a career in child development and help you pass the Council of Professional Recognition's CDA certification exam. Key topics include procedures and strategies for creating a safe and enriching childcare environment.

EDI 0615 **120 HRS.** **\$1,295**

MTWRF	24/7	eLearning	E2G
-------	------	-----------	-----

Teacher's Aide Paraprofessional O

Learn how paraprofessional assist with classroom instruction and build a foundation in classroom management. Develop strategies to support students in reading, writing, and math. Prepare for the ETS ParaPro Assessment exam.

EDI 0756 **130 HRS.** **\$1,695**

MTWRF	01/17	24/7	eLearning	E2G
MTWRF	02/14	24/7	eLearning	E2G
MTWRF	03/18	24/7	eLearning	E2G

GED Exam Prep

GED® -General Education Development or General Education Diploma. The GED® is an internationally recognized test, which serves as a high school equivalency exam. With four distinct parts; Reasoning Through Language Arts, Social Studies, Science, and Math; the GED® exam is comprehensive and challenging. Courses in this category are designed help learners identify gaps and focus on areas of weakness in preparation for the exam.

GED Exam Prep O

EDI 0615 **320 HRS.** **\$99**

MTWRF	01/17	24/7	eLearning	ME
MTWRF	02/14	24/7	eLearning	ME
MTWRF	03/18	24/7	eLearning	ME

Mathematical Reasoning O

EDI 0615 **80 HRS.** **\$29**

MTWRF	01/17	24/7	eLearning	ME
MTWRF	02/14	24/7	eLearning	ME
MTWRF	03/18	24/7	eLearning	ME

Language Arts Reasoning O

EDI 0615 **80 HRS.** **\$29**

MTWRF	01/17	24/7	eLearning	ME
MTWRF	02/14	24/7	eLearning	ME
MTWRF	03/18	24/7	eLearning	ME

Science O

EDI 0615 **80 HRS.** **\$29**

MTWRF	01/17	24/7	eLearning	ME
MTWRF	02/14	24/7	eLearning	ME
MTWRF	03/18	24/7	eLearning	ME

Social Studies O

EDI 0615 **80 HRS.** **\$29**

MTWRF	01/17	24/7	eLearning	ME
MTWRF	02/14	24/7	eLearning	ME
MTWRF	03/18	24/7	eLearning	ME

Learn your way

B Blended Classroom **S** Self-guided with Instructor **O** Online Self-paced **C** On-campus Classroom



2-15 Life, Health & Variable Annuity O

Topics covered include Federal and State Regulations, Legal Concepts of the Insurance Contract, Life and Health Insurance, Annuities, Health and Accident Insurance, and Disability and Medical Reimbursement. It is designed and taught to comply with the state requirements for the Life, Health and Annuities education state examination.

94549	60 HRS.	\$119
MTWRF 01/17	OnDemand with Instructor	OLT
MTWRF 02/14	OnDemand with Instructor	OLT
MTWRF 03/13	OnDemand with Instructor	OLT

2-20 Property & Casualty/General Lines (NEW!) O

The course covers underwriting, types of policies, provisions, riders, options, and exclusions. It explores personal, family, and business use of life insurance products, as well as major tax considerations. Learn Florida and Federal laws and regulations governing insurance transactions and dealings with the public. It is designed and taught to comply with the state requirements for the General Lines Agents State examination.

123542	200 HRS.	\$460
MTWRF 01/17	OnDemand with Instructor	OLT
MTWRF 02/14	OnDemand with Instructor	OLT
MTWRF 03/13	OnDemand with Instructor	OLT

4-40 Registered Customer Service O

Topics covered include Automobile, Property Insurance, Inland Marine, Crime, Workers Compensation, General Liability, and Health Insurance. Successful completion of this course exempts you from the state exam and allows you to apply with the Department of Financial Services for the state issued 4-40 RCSR license.

94898	40 HRS.	\$360
MTWRF 01/17	OnDemand with Instructor	OLT
MTWRF 02/14	OnDemand with Instructor	OLT
MTWRF 03/13	OnDemand with Instructor	OLT

4-40 to 2-20 Conversion Property & Casualty General Lines O

This course offers the fastest, most affordable and convenient way to become a licensed Property & Casualty General Lines Agent if you have had at least one year of responsible insurance duties as a licensed and appointed Customer Representative (4-40), or a Personal Lines Agent (20- 44), or a Service Representative (0-55). Convert your 4-40, 0-55, or 20-44 license to a full 2-20 General Lines license.

98770	40 HRS.	\$360
MTWRF 01/17	OnDemand with Instructor	OLT
MTWRF 02/14	OnDemand with Instructor	OLT
MTWRF 03/13	OnDemand with Instructor	OLT

3-20 or 6-20 Accredited Claim Adjuster O

Become a licensed Accredited Claims Adjuster with this 40-hour course. It is designed and taught to comply with the state requirements for Accredited Claims Adjuster examination. After completion of this course, you will receive the Accredited Claims Adjuster designation which allows you to apply to the Florida Department of Financial Services for your choice of 3-20 Public Adjuster or 6-20 All-Lines license.

98773	40 HRS.	\$360
MTWRF 01/17	OnDemand with Instructor	OLT
MTWRF 02/14	OnDemand with Instructor	OLT
MTWRF 03/13	OnDemand with Instructor	OLT

REAL ESTATE

APPROVED BY THE STATE OF FLORIDA



Real Estate: FREC 1 O

There has never been a better time to get your Florida Real Estate License. Start your training today by enrolling in the FREC 1 (Florida Real Estate Course). FREC 1 Course is an introduction to the basic principles and theories of real estate property, its economic value, and the legal aspects of real estate law affecting salespersons. Successful completion qualifies candidates to apply for the State of Florida Salesperson's License Exam.

EDC 0590	63 HRS.	\$299
MTWRF 01/17	OnDemand with Instructor	OLT
MTWRF 02/14	OnDemand with Instructor	OLT
MTWRF 03/13	OnDemand with Instructor	OLT

Real Estate Investing O

Develop a plan for your own investing efforts based on your personality and investing objectives. You'll learn how to invest in foreclosures, manage a rehab project, and build your team of real estate professionals (title officers, lawyers, accountants, mortgage brokers, appraisers, and more).

EDI 0615	24 HRS.	\$135
MTWRF 01/17	OnDemand with Instructor	E2G
MTWRF 02/14	OnDemand with Instructor	E2G
MTWRF 03/13	OnDemand with Instructor	E2G

20-44 Personal Lines Agent O

Topics covered include Personal Automobile, Property Insurance, Inland Marine, Homeowners, and Dwelling and Related Coverages. It is designed and taught to comply with the state requirements for the Personal Lines Agents state examination.

95149	60 HRS.	\$360
MTWRF 01/17	OnDemand with Instructor	OLT
MTWRF 02/14	OnDemand with Instructor	OLT
MTWRF 03/13	OnDemand with Instructor	OLT

Learn your way

B	S	O	C
Blended Classroom	Self-guided with Instructor	Online Self-paced	On-campus Classroom





[Click for tuition free courses here](#)

- **Home Inspection** This course will help you prepare for a career as a home inspector. You will learn best practices for inspecting residential construction, including inspection guidelines, identifying common defects, reporting methodologies, and risk management.
- **Blueprints, Construction Plans and Specifications-Intro** Start building and improving your skills reading construction prints and specifications.
- **Construction 101: Selling and Estimating** Every construction project starts with a sale. Sales are a critical part of a successful construction business. Without sales, construction crews would sit idle.
- **Roofing 101: Basics for Non-Industry Professionals** Roofing systems are among the most important components of a building. They protect the structure, the content and the occupants against nature's elements.
- **Residential Electrician** From updating existing buildings to building construction, demand for electricians is on the rise. This course will train you for an entry-level career as an electrician by teaching you the fundamental skills
- **Plumbing Foundations** This course trains for a career in plumbing. You will learn specialized plumbing skills and terminology for residential, commercial, and industrial plumbing systems.

Drones UAS

The Part 107 regulatory action requires special piloting license for commercial use of drones based on the Federal Aviation Administration (FAA) incorporated licensing guidelines for small Unmanned Aircrafts (sUAS).

Complete this training to pass the FAA's Aeronautical Knowledge Test and become FAA-certified drone pilots.

This self-paced online training program has a 99% success pass rate and includes 70+ video lessons that cover the 120+ concepts that the FAA has outlined in their UAS Airman Certification Standards across 5 key areas:

- Drone Laws & FAA Regulations
- Weather & Micrometeorology
- National Airspace System (NAS)
- Drone Flight Operations
- UAS Loading & Performance

Remote Pilot In Command Certificate FAA UAG B

Learn to pilot a drone and develop piloting practices for the operation of small Unmanned Aircraft Systems (sUAS/Drones). Part II of this program will prepare you for the Federal Aviation Administration (FAA) Airman Knowledge Test (AKT). Earn the Remote Pilot-In-Command Credential. Prepare for the FAA Airman Knowledge Test (AKT) for the Unmanned Aircraft-General (UAG) written examination.

EDI 0918 **16 HRS.** **\$299**
WRF 04/17-04/26 9:30am-12:00pm YMCA 736116

TRUST (The Recreational UAS Safety Test) O

New-launched June 2021. FAA-approved Test Administrator of TRUST for Recreational Flyers of Drones. Short 30 minutes course is required for U.S. recreational flyers of drones. No prior drone knowledge needed to succeed.

Unlimited attempts to pass.
EDI 0615 **30 MINS** **FREE**

Additional Information ce@broward.edu

Powered by DRONE PILOT Ground School

Earn your Micro Credentials & **DIGITAL BADGE**



Steps to share your accomplishments with colleagues and employers

- Step 1: Select and Enroll in a Micro- Credential course.
- Step 2: Complete Requirements and receive Micro-Credential.
- Step 3: Earn your Badge.
- Step 4: Share your Micro-Credential & Digital Badge on: LinkedIn and other social media platforms, Resume, embed in your e-mail signature.

Mini “MBA” Five-Day Workshop S

Immerse yourself in this one-of-a-kind program covering all the vital business skills you need to make sound business decisions. Learn to handle data, reduce risks and manage people, processes and new technology. Prepare yourself to innovate, strategize and lead with success. This hands-on, 5-day intensive course is different from all others and includes case studies, team exercises, self-assessments and videos. You'll create financial statements, worksheets and a SWOT analysis, and will participate in a business challenge simulation on the final day.

KEY COURSE BENEFITS

- Communicate and collaborate effectively
- Improve how you manage people
- Speak Finance
- Strategize and Manage risks
- Enhance creativity and innovation
- Sharpen your leadership skills

Business Challenge SIMULATION PROJECT

Apply your new knowledge, skills and behaviors in this virtual capstone

WHO SHOULD ATTEND

Business professionals who need a well-rounded, practical set of business acumen skills.

This workshop does not award a degree.

For information: ce@broward.edu

Partnering with Your Boss O

Become a proactive partner with your boss. You are often called upon to communicate, plan, organize, negotiate and participate in decision making at very high levels. Attend this seminar and master techniques for effective goal setting, prioritizing, planning, decision making, relationship building and listening. Learn how to communicate confidently and assertively—and develop and use power and authority.

KEY COURSE BENEFITS

- Consistently anticipate your boss's needs
- Gain the respect of your boss and be taken seriously
- Confidently represent your boss
- Be seen by your boss and by others as a valuable professional resource
- Develop a trusting relationship with your boss
- Partner with multiple bosses and other office professionals

Business Challenge SIMULATION PROJECT

Apply your new knowledge, skills and behaviors in this virtual capstone

WHO SHOULD ATTEND

Senior administrative support staff, executive secretaries, administrative professionals, staff assistants and executive assistants.

For information: ce@broward.edu

LEAN Process Improvement Delivering More with Less O

Apply LEAN fundamentals to reduce inefficiencies, lower costs and increase revenue. LEAN process improvement tools offer simple fixes that will change your thinking, improve your operations and deliver quick solutions. In this course, you'll discover there are 7 types of waste and several methods to eliminate. You will learn to map the customer value stream and determine which activities add value to the customer and which do not. A highly interactive case study will cement the learning as you participate in repairing a broken process with instructor guidance utilizing LEAN tools and principles.

WHAT YOU WILL COVER

- Understanding LEAN methodology concepts
- Mapping the customer value stream
- Identifying LEAN metrics
- Discerning the connection between LEAN and Six Sigma
- Grasping the 7 types of waste
- Implementing LEAN tools to decrease process waste

WHO SHOULD ATTEND

Anyone looking to project a positive image and distinctive presence professionally.

For information: ce@broward.edu

Making the Transition to Management O

Now that you've been promoted, do you know how to be the boss? Here's where you'll lay the foundation for your management career and get easy-to-apply tools to make a successful transition into your new role. In just two days you will gain the practical know-how you need—and the confidence you want—to step in as an effective new manager.

KEY COURSE BENEFITS

- Understand your new managerial responsibilities
- Establish credibility and effective work styles
- Build alliances with peer managers
- Master the basic management concepts of coaching, communication, motivation, delegation and performance
- Become an effective member of the management team

WHAT YOU WILL COVER

- Adopting a new manager mindset
- Knowing the business: operational and tactical planning; action
- Understanding others: strengthening communication, roles and responsibilities
- Recognizing contributions and challenges of different styles
- Using a structured approach to plan and organize work
- Creating solutions to management challenges

WHO SHOULD ATTEND

Professionals who need practical business acumen skills.

For information: ce@broward.edu

2024 BUSINESS & HEALTHCARE

JUST-IN-TIME CUSTOMIZED TRAINING

-  **MEDICAL AND ALLIED HEALTH**
-  **IT AND COMPUTER APPLICATIONS**
-  **SALES & MARKETING**
-  **PROCESS IMPROVEMENT**

UP-SKILL YOUR STAFF

- Increase Productivity
- First Time Managers
- Customer Service
- Healthcare Staffing
- Scale your Business

Attn:

Healthcare Administrators

Let's address the healthcare staff shortage together! Contact us: [Training request form](#) or ce@broward.edu to learn how we can solve your institution's needs.



Employees Earn Micro-Credential
Digital Badge Certificate



**NEED
FUNDING?**

**CHECK THESE
RESOURCES**



We bring the training to you

EMPLOYER In the Spotlight

CITY FURNITURE

Broward College recognizes City Furniture as our Premier Corporate Partner!

An industry leader in the furniture retailing space. In collaboration with City Furniture, Broward College - Workforce Education developed a customized Sales training program to bridge the gap and build a pipeline of talented sales associates for City Furniture.

We congratulate City Furniture leaders for prioritizing talent development for their organization by investing in learning initiatives and recognizing the value of workforce development. Broward College provided solutions, to address their talent shortage.

Company Highlights

Mission: CITY Furniture, the ultimate furniture and mattress store, provides quality home furnishings at excellent values with friendly and efficient service in an exciting, fun environment.

Industry: Home Furniture Industry

Size: Over 30 CITY Furniture and Ashley Homestore locations throughout the state of Florida. Recognized as the #1 furniture company in South Florida, and in the top 30 nationwide. 1,001-5,000 employees (LinkedIn)

Find out more about **Home and professional Furnishing** at City Furniture <https://cityfurniture.com>

Invest in your team and let Broward College bring training to you! Visit www.broward.edu/corporate

ONLINE: We bring courses to you. Anytime, anywhere
3-Month Pass* | \$349 for 3 Online Courses within 3 months
4- Months Pass* | \$399 for 4 Online Courses within 4 months
*Pass can be used by same or different student. Info: ce@broward.edu



Unlock the Future

Reasons to enroll

- Gain a competitive edge with AI skills.
- Position yourself and your team for future success.
- Transform Your Workplace with Cutting-edge AI Knowledge!

Who Should Attend?

Anyone Eager to Embrace AI in the Workplace



Artificial Intelligence (AI) for the Workplace **B**

Embark on a journey of innovation and efficiency with this Micro-Learn short course series Integrating AI in the Workplace training program. Elevate your skills and thrive using real-world application, exercises to implement solutions in the workplace immediately. Course includes: AI Career Essentials, ChatGPT Prompts, Workplace applications and ethics.

EDE0487 **24HRS.** **\$199**
 MTWRF 04/09-04/30 10:00am-4:00pm CEN 742369

Introduction to ChatGPT Prompts **B**

Welcome to the exciting world of ChatGPT prompts! In this course, you will learn the fundamentals of using ChatGPT to generate creative and engaging conversations. Whether you're new to the world of AI, a content creator, or simply curious about AI, this course will equip you with the necessary skills to interact effectively with ChatGPT.

EDE0299 **6HRS.** **\$59**
 MTWRF 04/09 10:00am-4:00pm CEN 742370

Generative AI – Your Career Essentials **B**

Learn foundational Generative AI knowledge and skills necessary for your career. Whether you're a student, a professional looking to learn and apply AI in the workplace, or simply curious about generative AI, this course will equip you with the essential tools and insights to kickstart your journey.

EDE0303 **6HRS.** **\$59**
 MTWRF 04/16 10:00am-4:00pm CEN 742375

AI – Workplace Applications **B**

Gain an understanding of how artificial intelligence (AI) is transforming the modern workplace. Whether you're a business professional, a manager, or an aspiring AI practitioner, this course will equip you with the knowledge and skills to leverage AI technologies in various workplace scenarios.

EDE0307 **6HRS.** **\$59**
 MTWRF 04/23 10:00am-4:00pm CEN 742376

Basic ChatGPT Ethics **B**

Delves into the ethical considerations surrounding the use of basic chatbot models, focusing on responsible and respectful interactions. Explore ethical AI communication to gain basic skills to engage with chatbots ethically.

EDE0395 **6HRS.** **\$59**
 MTWRF 04/30 10:00am-4:00pm CEN 742377

Additional upcoming AI courses:

- Artificial Intelligence A-Z™
- Machine Learning for Absolute Beginners - Level 1
- Artificial Intelligence & Machine Learning for Business
- Introduction to Machine Learning for Data Science
- OpenAI, GPT, ChatGPT and DALL-E
- ChatGPT Intermediate - ChatGPT Prompts
- ChatGPT chatbot for Salesforce Admin
- ChatGPT for IT Workers



SPRING Breakaway

March 25-29, 2024

Spring Breakaway Morning: Option 1 **C**
 9:00am-12:00pm YMCA \$199 736093

Topics Include:

- Social Media Marketer
- Graphic Designer Jr.
- Health career Immersion
- Algebra for Real Life

Spring Breakaway Morning: Option 2 **C**
 9:00AM-12:00PM YMCA \$199 736098

- Make Your first 3D Video Game



Gamified Learning

Spring Breakaway Afternoon: Option 1 **C**
 1:00pm-4:00pm YMCA \$199 736097

Topics Include:

- Intro. to Artificial Intelligence
- Physician Assistant, Jr.
- Start Your Business
- Creative Writing

Spring Breakaway Afternoon: Option 2 **C**
 1:00pm-4:00pm YMCA \$199 740559

- 3D Game Design with Unity.

ACADEMIC ENRICHMENT

Classes are Online 24/7 Online Instructor-guided **O S**

SAT TEST PREPARATION \$135

GRAMMAR REFRESHER \$135

PUBLIC SPEAKING \$135

MICROSOFT EXCEL \$147

INTRO TO MICROSOFT POWERPOINT \$147

Dates
 01/17 - 03/08
 02/14 - 04/05
 03/13 - 05/03
 04/17 - 06/07
 05/15 - 07/05



PREPARING KIDS TO
WORKFORCE
Ready

KIDS & TEENS SUMMER

College
 Ages 8-17
 June 24 - July 26



2023/24 SCHOOL CALENDAR

For an ADA accessible version of this calendar, visit browardschools.com/accessiblecalendar.

JANUARY					FEBRUARY					MARCH					APRIL					MAY				
M	T	W	T	F	M	T	W	T	F	M	T	W	T	F	M	T	W	T	F	M	T	W	T	F
1	2	3	4	5				1	2					1	1	2	3	4	5			1	2	3
8	9	10	11	12	5	6	7	8	9	4	5	6	7	8	8	9	10	11	12	6	7	8	9	10
15	16	17	18	19	12	13	14	15	16	11	12	13	14	15	15	16	17	18	19	13	14	15	16	17
22	23	24	25	26	19	20	21	22	23	18	19	20	21	22	22	23	24	25	26	20	21	22	23	24
29	30	31			26	27	28	29		25	26	27	28	29	29	30				27	28	29	30	31

- Employee Planning (no school for students)
- Schools and Administrative Offices Closed
- Schools Closed
- Report Cards Issued
- Interim Reports Issued
- Early Release Day
- First and Last Day of School



In-Person and Virtual Skills Lab

Nursing Assistant Program B

This course prepares students to work with people of various demographics and establish foundational skills that expand their understanding of Nursing Assistants in healthcare. Topics covered include, safety, basic nursing care, rehabilitation and restorative care, infection control and patient care. The course also includes interactive activities, simulated laboratory experiences and hands-on skills in a designated clinical setting

CAE 0360 125 HRS. \$2,499
MTWRF 03/27-05/10 6:00pm-09:00pm CEN 735592

Personal and Home Health Assistant w/Skills B

This 24 hour course will provide the BC nursing student with a Home Health Aide certificate & eligibility to work for home health agencies.

CAE0737 24HRS. \$999
MTWRF 01/17-01/31 9:00am-12:00pm YMCA 735596
MTWRF 02/09-02/23 1:00pm-4:00pm CEN 735597

Medical Billing & Coding B

Learn pharmacy medical terminology, pharmacy calculations, reading and interpreting prescriptions, defining generic and brand names drugs to prepare you for the NHA National Certification.

CAE 0691 120 HRS. \$2,199
W 05/01-11/01 9:30am-12:30pm YMCA 737530

Clinical Medical Assistant C

Prepare to perform various clinical tasks such as assisting with minor medical procedures and administering medications, performing EKG electrocardiograms, obtaining laboratory specimens, etc.

CAE 0747 140 HRS. \$2,969
MW 01/22-05/01 6:00pm-9:00pm CEN 735575
T 03/19-07/30 9:00am-12:30pm YMCA 736197

Phlebotomy Technician C

Learn how to safely obtain patient's blood specimens by venipuncture and micro-collection for laboratory analysis. Topics in this course include related anatomy and physiology and procedures for collection of other types of specimens.

CAE 0756 90 HRS. \$1,649
T 03/06-05/07 6:00pm-9:00pm CEN 735961

EKG Technician C

EKG technicians are in demand! This program covers topics and processes critical to conducting and interpreting EKGs as an important member of the healthcare team.

CAE 0765 90 HRS. \$1,649
MW 03/25-04/24 6:00pm-9:00pm YMCA 735578

Electronic Health Records B

Learners will review the implementation and management of electronic health information using common electronic data interchange systems and maintaining the medical, legal, accreditation and regulatory requirements of the electronic health record.

CAE 0703 50 HRS. \$1,649
W 02/21-03/27 1:00pm-4:00pm YMCA 735579

Health Career Core C B

Learn basic medical terminology and technology, first aid skills, and how to measure vital signs. You'll also learn about blood borne diseases, infection control and ethical issues in healthcare.

CAE 0763 90 HRS. \$699
TR 03/14-04/16 9:00am-12:00pm YMCA 735585
MW 04/01-05/01 1:00pm-4:00pm SUN 735584

Patient Revenue Cycle B

Serve as a crucial staff member handling tasks such as billing, payments and collections in a healthcare setting. Program addresses the patient-centric revenue cycle and a firm understanding of the process.

CAE 0766 15 HRS. \$699
M 03/25-04/08 1:00pm-4:00pm SUN 735594
T 04/25-05/09 1:00pm-4:00pm YMCA 735595

Pharmacy Technician C B

Learn pharmacy medical terminology, pharmacy calculations, reading and interpreting prescriptions, defining generic and brand names drugs to prepare you for the NHA National Certification.

CAE 0690 150 HRS. \$1,649
W 02/28-07/31 9:30am-12:30pm YMCA 736196
M 03/11-05/06 6:00pm- 9:00pm CEN 736640

Patient Care Technician C

This course provides students technical skills necessary to service complex patient personal care and medical assisting issues including the implementation of selected portions of a specific care plan that may include rehabilitation services, bedside care, collection of laboratory specimens, phlebotomy, and EKG's. Patient Care Technicians work alongside doctors, nurses, medical assistants, and other healthcare providers to oversee and monitor patients.

CAE 0762 160 HRS. \$2,399
TR 01/09-04/18 6:00pm-9:00pm YMCA 735593
TR 02/27-05/16 1:00pm-4:00pm CEN 741264

Medical Administrative Assistant C B

This program prepares students to function effectively in many of the administrative and support positions at hospitals, physician practices and with other healthcare providers.

CAE 0764 50 HRS. \$1,649
W 02/07-03/13 1:00pm-4:00pm SUN 735588
F 04/12-05/10 1:00pm-4:00pm YMCA 735589

Basic Life Support (BLS) C

The basic rescuer training is intended to provide the student with information about prudent heart living, prevention of unnecessary death from heart attack, signals and actions for survival, as well as mastery of the skills involved in CPR 1 and 2 person, obstructed airway and infant CPR.

CAE 0062 4.5 HRS. \$100
S 01/20 8:30am-1:00pm CEN 735212
W 01/24 5:30pm-10:00pm CEN 735213
S 02/17 8:30am-1:00pm CEN 735214
W 02/21 5:30pm-10:00pm CEN 735215
S 03/16 8:30am-1:00pm CEN 735216
W 03/20 5:30pm-10:00pm CEN 735217
S 04/06 8:30am-1:00pm CEN 735218
S 04/13 8:30am-1:00pm CEN 735219
S 04/20 8:30am-1:00pm CEN 735220
W 04/24 5:30pm-10:00pm CEN 735221
S 04/27 8:30am-1:00pm CEN 735222



Training Center



LIFELIKE - Immersive experience that mirrors real-life medical scenarios. B

BODYINTERACT- (RN Virtual Patient Scenarios- Clinical Education: Innovative Didactic with virtual Patients). while developing procedural competence through virtual patient with measured assessments Peek: <https://youtu.be/3xXbiTcJ32w>



Classroom Includes:

- Skills stations
- Simulation area
- Medical equipment

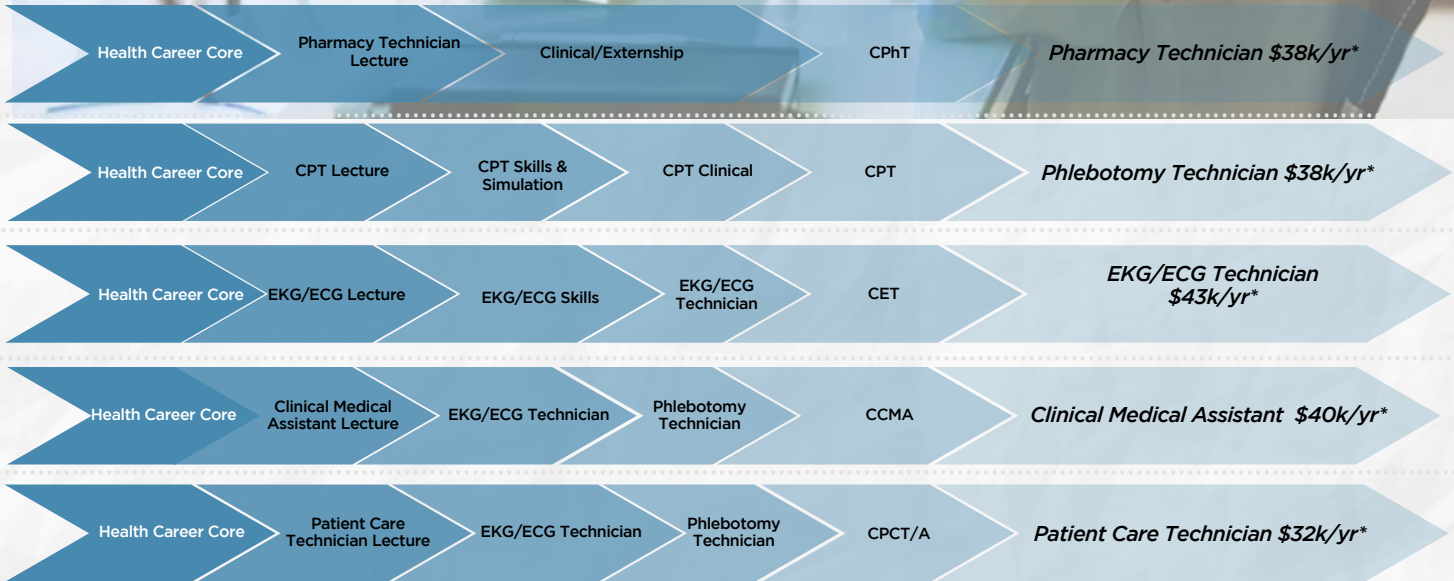
Fully immersive Augmented Reality (AR) enriched experience allows students to practice advanced patient care in a virtual zero-risk clinical training environment designed to reduce the frequency of medical errors in a real healthcare setting.



Learn your way

- B** Blended Classroom **S** Self-guided with Instructor **O** Online Self-paced **C** On-campus Classroom





* Median salary in Broward County based on Lightcast, 2023

Anatomy of a Digital Badges



Earn your Micro Credentials & DIGITAL BADGE

Share your accomplishments with colleagues and employers

- Step 1: Select and Enroll in a Micro- Credential course.
- Step 2: Complete Requirements and receive Micro-Credential.
- Step 3: Earn your Badge.
- Step 4: Share your Micro-Credential & Digital Badge on: LinkedIn and other social media platforms, Resume, embed in your e-mail signature.



Watch this video to learn how they work.

Professional Bundle- BC Online S

Bundle includes 6 fully online, self-paced courses that meet state requirements for license renewal HIV/Aids, Domestic Violence, Prevention of Medical Errors, TB/OSHA/Hepatitis, Florida Laws & Rules, and Recognizing Impairment in the Workplace.

CAE 0758	20 HRS.	\$150
MTWRF 01/05-03/14	24/7 Online CEN	735601
MTWRF 03/12-05/10	24/7 Online CEN	735602

HIV/AIDS - BC Online S

This is a fully online, self-study course, designed to provide instruction on the current trends in HIV transmission, treatment for HIV/AIDS, occupational transmission of HIV, and the Center for Disease Control (CDC) recommendations for HIV testing.

CAE 0616	4 HRS.	\$40
MTWRF 01/05-03/14	24/7 Online CEN	735586
MTWRF 03/15-05/10	24/7 Online CEN	735587

Domestic Violence - BC Online S

Learn the reporting requirements for healthcare workers regarding domestic violence to including partner and domestic abuse, child and elder abuse.

CAE 0615	2 HRS.	\$27
MTWRF 01/05-03/14	24/7 Online CEN	735576
MTWRF 03/15-05/10	24/7 Online CEN	735577

Prevention of Medical Errors - BC Online S

This is a fully online self-study course, designed to provide instruction on medical errors, factors related to their occurrence, methods to prevent their occurrence, and processes and strategies to improve patient outcomes.

CAE 0617	2 HRS.	\$27
MTWRF 01/05-03/14	24/7 Online CEN	735599
MTWRF 03/15-05/10	24/7 Online CEN	735600

TB/OSHA/Hep. - BC Online S

This is a fully online, self-study course, designed to provide instruction on OSHA regulations, infection control, hepatitis, and tuberculosis.

CAE 0663	6 HRS.	\$60
MTWRF 01/05-03/14	24/7 Online CEN	735606
MTWRF 03/15-05/10	24/7 Online CEN	735607

Florida Laws & Rules - Nursing - BC Online S

A fully online self-study course designed to provide a review of Florida laws and rules related to the practice of nursing. The target audience for this course is registered nurses, clinical nurse specialists, advanced registered nurse practitioners, licensed practical nurses, and certified nursing assistants.

CAE 0657	2 HRS.	\$27
MTWRF 01/05-03/14	24/7 Online CEN	735580
MTWRF 03/15-05/10	24/7 Online CEN	735581

Florida Laws & Rules - Respiratory - Online S

A fully online self-study course designed to provide a review of Florida laws and rules related to the practice of respiratory therapy. The target audience for this course is respiratory therapists.

CAE 0656	2 HRS.	\$27
MTWRF 01/05-03/14	24/7 Online CEN	735582
MTWRF 03/15-05/10	24/7 Online CEN	735583

Recognizing Impairment in the Workplace - BC Online S

The purpose of this course is to make Florida nurses aware of the impact of workplace impairment and to provide education on recognition, reporting, and support program for the impaired provider.

CAE 0671	2 HRS.	\$27
MTWRF 01/05-03/14	24/7 Online CEN	735603
MTWRF 03/15-05/10	24/7 Online CEN	735604

Mini Healthcare Core S

This course is packed with essential healthcare skills with a focus on: Medical math, Medical terminology, BLS overview, Professionalism for Healthcare workers and more.

CAE 0767	6HRS.	\$79
MTWRF 01/05-03/14	Online	735590
MTWRF 03/15-05/10	Online	735591

Medical Math S

Improve your mathematical knowledge as it relates to areas in the medical field. Practice the skills to identify, solve, and apply mathematical principles in various medical settings. This course provides a review of mathematical operations, application, and calculation of medication dosages.

Medical Terminology S

Gain the necessary knowledge and abilities to confidently tackle the most complicated of medical terms and use this ability throughout your career. Lay the foundation to your career with a well-rounded introduction to medical terminology.

RN Refresher- Self-paced S

The Nurse Refresher Course is designed for nurses returning to the clinical setting. Students will explore current nursing practices and issues and learn about the most up to date standards of practice. A review of body systems, intravenous therapy, fluids and electrolytes, and management of common disorders will provide a level of comfort when returning to patient care.

CAE 0623	85HRS.	\$1,499
MTWRF 03/19-05/07	Online Central	735605

License and per-requisite required



Connects licensing boards, education providers, and licensed professionals

Micro Credentials & DIGITAL BADGE

Share your accomplishments with colleagues and employers

Anatomy of a Digital Badges



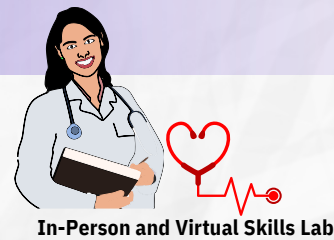
Watch this video to learn how they work.

Earn, Stack, and Share your Micro-Credentials: Step 1: Select and Enroll in a Micro- Credential course. Step 2: Complete Requirements and receive Micro-Credential. Step 3: Earn your Badge. Step 4: Share your Micro-Credential & Digital Badge on: LinkedIn and other social media platforms, Resume, embed in your e-mail signature.

Learn your way

B	S	O	C
Blended Classroom	Self-guided with Instructor	Online Self-paced	On-campus Classroom





In-Person and Virtual Skills Lab

Phlebotomy Technician (CPT) C

This course will discuss the principles of phlebotomy and techniques for drawing blood while utilizing safety procedures and proper standards. Students will learn terminology, types of specimens, and skills needed to perform venipuncture and capillary collection techniques. In-person and Virtual Skills Lab included!
 Certification: CPT, National Healthcareer Association (NHA)

CAE 0756 **90 HRS.** **\$1,649**
 T 03/26-05/07 6:00pm-9:00pm CEN 735961

8%
 Employment of Phlebotomy Technician is expected to grow 8% through 2032 (Bureau of Labor Statistics)



Pharmacy Technician B



Prepare to enter the pharmacy field and take the Pharmacy Technician Certification Board's PTCEB exam. Learn pharmacy medical terminology, pharmacy calculations, reading and interpreting prescriptions, defining generic and brand name drugs and much more. Program also includes an optional clinical externship at a local healthcare provider. High School Diploma or GED required to sit for National Certification exam.

CAE 0690 **150 HRS.** **\$1,649**
 W 02/28-07/31 9:30am-12:30pm YMCA 734889
 M 03/11-05/06 6:00pm-9:00pm CEN 736640

KEY COURSE BENEFITS

- Pharmacy calculations
- Medical terminology specific to the pharmacy
- Skills to read and interpret prescriptions
- Review of the top 200 drugs
- Skills to identify drugs by generic and brand names
- Dosage calculations, I.V. flow rates, drug compounding, and dose conversions
- Dispensing of prescriptions, inventory control, and billing and reimbursement

WHO SHOULD ATTEND

Individuals looking to work under a registered pharmacist in hospitals, home infusion pharmacies, community pharmacies and other healthcare settings.

10%
 Employment of Pharmacy Technician is expected to grow 10% through 2032 (Bureau of Labor Statistics)

EKG Technician (CET) C

This course prepares students to perform EKGs and includes basic anatomy and physiology of the heart, medical disease processes, medical terminology, medical ethics, legal aspects of patient contact, emergencies related to cardiac testing: syncope, chest pain, and abnormal vitals. Students will also learn about arrhythmias, calculating heart rates, and types of ECGs. Additionally, students will practice with EKG equipment and perform hands on labs including introduction to the function and proper use of the EKG machine.
 Certification: CET, National Healthcareer Association (NHA)

CAE 0765 **90 HRS.** **\$1,649**
 MW 03/25-04/24 6:00pm-9:00pm YMCA 735578

10%
 Employment of EKG Technician is expected to grow 10% through 2032 (Bureau of Labor Statistics)



BECOME A MEDICAL PROFESSIONAL LEGAL CONSULTANT



Convenient, affordable and effective legal training.

REGISTER <https://www.legalstudies.com/product/broward-college-medical-professional-legalconsultant/>

MAKE A DIFFERENCE TODAY!

- Legal Nurse Consultant
- Medical Professional Legal Consultant
- Victim Advocacy Certificate

CLASSES START JANUARY 8, 2024

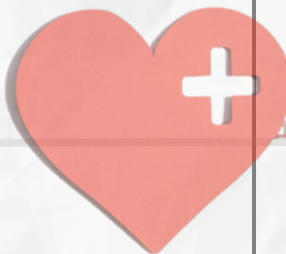
01/08-02/23 24/7 Online
 03/04-04/19 24/7 Online
 04/29-06/14 24/7 Online

Medical Billing and Coding **B**

This combined billing and coding course offers the skills needed to perform complex coding and billing procedures. The course covers CPT (Introduction, Guidelines, Evaluation, and Management), specialty fields (such as surgery, radiology, and laboratory), ICD-10 (Implementation and Guidelines), and basic claims processes for insurance reimbursement. Students will learn how to find the service and codes using manuals (CPT, ICD-10 and HCPCS).

CAE 0691 **120 HRS.** **\$2,199**
 W 05/01-11/01 9:30am-12:30pm YMCA 737530

8%
 Employment of Medical Billing & coding Technician is expected to grow 8% through 2032 (Bureau of Labor Statistics)



Tuition Assistance Options: pg. 39

Medical Administrative - Assistant (CMAA) **B C**

This course covers information on the medical assisting profession, interpersonal skills, medical ethics and law, medical terminology, basics of insurance billing and coding, telephone techniques, scheduling appointments, medical records management, and management of practice finances.

CAE 0764 **50 HRS.** **\$1,649**
 W 02/07-03/13 1:00pm-4:00pm SUN 735588
 F 04/12-05/10 1:00pm-4:00pm YMCA 735589

10%
 Employment of Medical Administrative Assistant is expected to decline 10% through 2032 (Bureau of Labor Statistics)

Patient Revenue Cycle **B**

The Revenue Cycle Specialist serves as a crucial staff member handling tasks such as billing, payments and collections in a healthcare setting. Get recognized as a valued contributor to a healthcare organization's revenue cycle process with this level- I course. Program addresses the patient-centric revenue cycle and a firm understanding of the process. Earn a micro credential: Certificate of completion and digital badging.

CAE 0766 **15 HRS.** **\$699**
 M 03/25-04/08 1:00pm-4:00pm SUN 735594
 T 04/25-05/09 1:00pm-4:00pm YMCA 735595

8%
 Employment of Patient Revenue Cycle Technician is expected to grow 8% through 2032 (Bureau of Labor Statistics)

Electronic Health Records - (CEHRS) **B**

This course prepares students to understand and use electronic records in a healthcare setting. This course reviews the implementation and management of electronic health information using common electronic data interchange systems and maintaining the medical, legal, accreditation and regulatory requirements of the electronic health record.

CAE 0703 **50 HRS.** **\$1,649**
 W 02/21-03/27 1:00pm-4:00pm YMCA 735579

8%
 Employment of Electronic Health Records Technician is expected to grow 8% through 2020 (Bureau of Labor Statistics)





Behavior Technician 16 weeks - \$2,500 **O**

Begin your career with the skills to thrive and earn your credentials as a Registered Behavior Technician (RBT). Learn a series of documentation and protocol rules and regulations by the Behavior Analyst Certification Board (BACB) guidelines and HIPAA regulations. Learn BCBA material needed for the BACB RBT Certification exam. Both of these are extremely important – this course is offered as part of the RBT training and should be understood prior to taking the BACB examination for the RBT certificate.

Requirement to become a fully certified Registered Behavior Technician include completion of 40-hour training before being eligible to take the RBT exam. Earning the RBT certification demonstrates your expertise in ensuring the proper treatment of your patients and providing excellent customer service.

PLEASE NOTE: This training program is based on the Registered Behavior Technician Task List (2nd ed.) and is designed to meet the 40-hour training requirement for RBT credential. The program is offered independent of BACB. There are additional requirements (outside of training and examination) mandated by the BACB for those on the path to earning the RBT designation. Visit www.bacb.com/rbt for more information"

9%

Employment of Behavior Technician is expected to grow 9% through 2032 (Bureau of Labor Statistics)

Surgical Technician 16 weeks - \$4,000 **O**

Gain skills to become a Surgical Technologists, also called Operating Room Technicians. Work alongside, and assist surgeons, nurses, and other members of the health care team throughout a surgical operation. This high-earning job is a great opportunity to enter the healthcare industry and work in a fast-paced, stimulating environment.

This program provides students with immersive and virtual hands-on learning experiences. Surgical procedures are demonstrated using virtual tools or live-recorded video and are simulated – allowing the student to immerse him/herself into a virtual experience that is engaging, safe, and repeatable. This program prepares students to become Tech in Surgery – Certified (TS-C) by the National Center for Competency Testing (NCCT).

Professionals who earn the NCCT designation have the clinical skills and knowledge for maintaining asepsis during surgery, anticipating the surgeon's needs, and remaining attentive to all aspects of the surgical procedure to ensure a safe environment for the patient.

5%

Employment of Surg Technician is expected to grow 5% through 2032 (Bureau of Labor Statistics)

Sterile Processing 14 weeks - \$4,000 **O**

This three course program includes: Intro to Human Anatomy & Medical Terminology, Professionalism in Allied Health, and Sterile Processing. This program prepares students to become well-rounded Sterile Processing Technicians.

Because graduates will be working in a healthcare facility, it is imperative that they be able to speak and understand the language of medicine and have a fundamental understanding of basic human anatomy and physiology. Sterile processing tasks, by nature, typically involve hands-on interaction, an increased focus is placed on immersion and a high level of interactivity.

Upon completion of this program, the student will be eligible to sit for the provisional certification exam for Certified Registered Central Service Technician (CRCST) sponsored by the Healthcare Sterile Processing Association (HSPA, formerly IAHCSSM).

Note: Full certification is obtained after acquiring 400 hours of hands-on sterile processing experience within six months of provisional certification.

5%

Employment of Sterile Processing Technician is expected to grow X% through 2020 (Bureau of Labor Statistics)



Medical Lab Assistant 16 weeks - \$4,000 **O**

A Medical Laboratory Assistant (also known as Lab Aid/Assistant, Specimen Processor/collector), is an important member of the laboratory healthcare team. Learn to collect, prepare, and transport patient specimens, and may perform various testing on blood, urine, and other bodily fluids. Lab Assistants perform the tests and procedures that physicians and other healthcare providers order, which are often used for the diagnosis of disease.

Gain skill to test and examine specimens, then analyze and relay results to the physicians. Learn accurate documentation, records management, and communication with other ordering physicians. Discover use of microscopes, cell counters, and other sophisticated laboratory equipment.

This program provides students with immersive and virtual hands-on learning experiences. Procedures are demonstrated using virtual tools or live-recorded video and are simulated – allowing the students to immerse themselves into a virtual experience that is engaging, safe, and repeatable.

Learn your way

B Blended Classroom
S Self-guided with Instructor
O Online Self-paced
C On-campus Classroom





- Classroom Includes:**
- Skills stations
 - Simulation area
 - Medical equipment



GAIN MEDICAL EXPERIENCE **C**

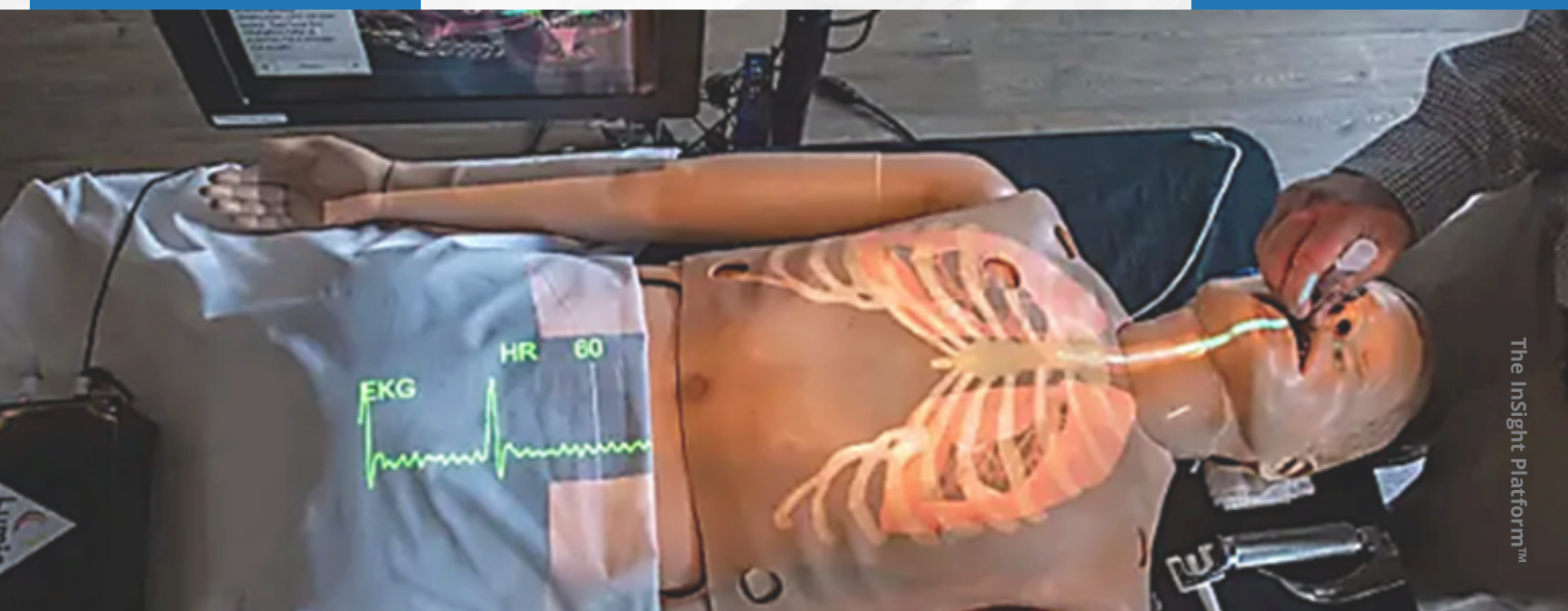


PRACTICE ADVANCED PATIENT CARE IN A VIRTUAL ZERO-RISK CLINICAL TRAINING ENVIRONMENT



IMMERSIVE EXPERIENCE THAT MIRRORS REAL-LIFE MEDICAL SCENARIOS

Fully immersive Augmented Reality (AR) enriched experience that merges the physical environment, with a digital simulation, allowing students to practice advanced patient care in a virtual zero-risk clinical training environment designed to reduce the frequency of medical errors in a real healthcare setting.



The Insight Platform™

PRACTICE ADVANCED PATIENT CARE IN A VIRTUAL ZERO-RISK CLINICAL TRAINING ENVIRONMENT

SKILLS **C**

IMMERSIVE EXPERIENCE

Learn in demand healthcare skills in our powerful teaching environment with hands-free (no headsets or a screen) AR system. Discover sensor-based Smart Peripherals that mimics clinical instruments and advance learning across multiple healthcare Continuing Education courses.

C SKILLS

SMART PERIPHERALS™

sensor-based Smart Peripherals mimics clinical instruments to measure user actions and provide real-time feedback during simulations.

- Smart IV Sleeve™ –administration of simulated drugs
- Smart Stethoscope™ – patient assessment
- Smart Scalpel™ - virtual dissection and anatomy exploration
- Smart Ultrasound™ - simulated advanced ultrasound imaging
- Smart Airway™ - tracks intubation and airway management
- Smart CPR™ - correctly administer CPR
- Smart Needle™ - develop skills involving needle insertion



16%
Employment of Healthcare IT Technician is expected to grow 16% through 2032 (Bureau of Labor Statistics)

Healthcare IT (HIT) **O**

The Healthcare IT field is booming with development in technology and migration from paper files to electronic records. In our Healthcare IT Certification Training, you'll get to choose your path for certification through either a Healthcare or a Technical focus. Both paths cover medical office procedures & administration and Healthcare IT certification basics. The healthcare-focused path concentrates on Electronic Health Records and CompTIA A+ certification and prepares you for the CEHRS and A+ exams. Whereas the more technical path is focused on CompTIA A+ and Network+ certifications.

After completing our program and passing the Healthcare IT certification exams, you'll be qualified for opportunities like Practice Workflow and Information Specialist, Management Redesign Specialist, Clinician/Practitioner Consultant, Implementation Support Specialist/Manager, PC Technician, Technical/Software Support Specialist, Technology Specialist and more!



Earn Your Micro Credentials & **DIGITAL BADGE**

Share your accomplishments with colleagues and employers

Anatomy of a Digital Badges



Watch this video to learn how they work.

- Step 1: Select and Enroll in a Micro- Credential course.
- Step 2: Complete Requirements and receive Micro-Credential.
- Step 3: Earn your Badge.
- Step 4: Share your Micro-Credential & Digital Badge on: LinkedIn and other social media platforms, Resume, embed in your e-mail signature.

Make **2024** Count!

Your Path to Becoming a Healthcare IT Professional

Healthcare IT Professional



Medical Office Technology



A+ Comprehensive



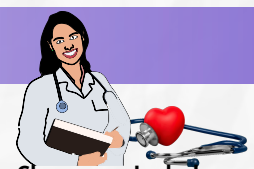
Network +



Healthcare IT

Healthcare IT Professional Career Path

Upon successful completion, students will be eligible to sit for three certification exams.



- Classroom Includes:**
- Skills stations
 - Simulation area
 - Medical equipment



3
Months
Course

Patient Care Technician ^S

This course provides students technical skills necessary to service complex patient personal care and medical assisting issues including the implementation of selected portions of a specific care plan that may include rehabilitation services, bedside care, collection of laboratory specimens, phlebotomy, and EKG's. Patient Care Technicians work alongside doctors, nurses, medical assistants, and other healthcare providers to oversee and monitor patients.

CAE0762 **160 HRS.** **\$2,399**
TR 01/09-04/18 6:00pm-9:00pm YMCA 735593

- Health Career Core
- Nursing Assistant
- Electrocardiogram (EKG)
- Phlebotomy

4%
Employment of Patient Care Technician is expected to grow 4% through 2032 (Bureau of Labor Statistics)

Upon completion of the course, students can take the Patient Care Technician certification exam from the National Health Career Association (NHA).

Tuesday and Thursday 6pm - 9pm 1/9 - 4/18 at the YMCA
Prerequisites: Students must have a High School Diploma or GED.

Contact us for registration cewfd@broward.edu or 954-201-7801.



Tuition Assistance
Options: pg. 39



Make
2024
Count!

Your Path to Becoming a Patient Care Technician

Patient Care Technician (PCT)



HealthCore



Nursing Assistant



Phlebotomy



EKG

Patient Care Technician Career Path

Successful complete Health Career Core, Nursing Assistant, Phlebotomy Technician, Electrocardiography Technician to take the Patient Care Technician Certification exam.



Classroom Includes:

- Skills stations
- Simulation area
- Medical equipment



Nursing Assistant Program S

This course prepares students to work with people of various demographics and establish foundational skills that expand their understanding of Nursing Assistants in healthcare. Topics covered include, safety, basic nursing care, rehabilitation and restorative care, infection control and patient care. The course also includes interactive activities, simulated laboratory experiences and hands-on skills in a designated clinical setting

CAE 0360 **125 HRS.** **\$2,499**
 MTWRF 03/27-05/10 6:00pm-09:00pm CEN 735592

Nursing Assistant Course components include:

- Health Career CORE
- Nursing Assistant
- Skills Lab



Tuition Assistance
Options: pg. 39

Upon completion of the course, students can self register for the Certified Nursing Assistant exam through Prometrics.

Monday and Wednesday, 6pm - 9pm 3/27 - 5/10 at Central

Prerequisites: Students must have a High School Diploma or GED. Contact us for registration cewfd@broward.edu or 954-201-7801.

Employment of Nursing Assistant is expected to grow **4%** through 2020.
- Bureau of Labor Statistics

Make
2024
Count!

Your Path to Becoming a Certified Nursing Assistant

Certified Nursing Assistant




Healthcare Core



Nursing Assistant



Skills Lab



Clinical

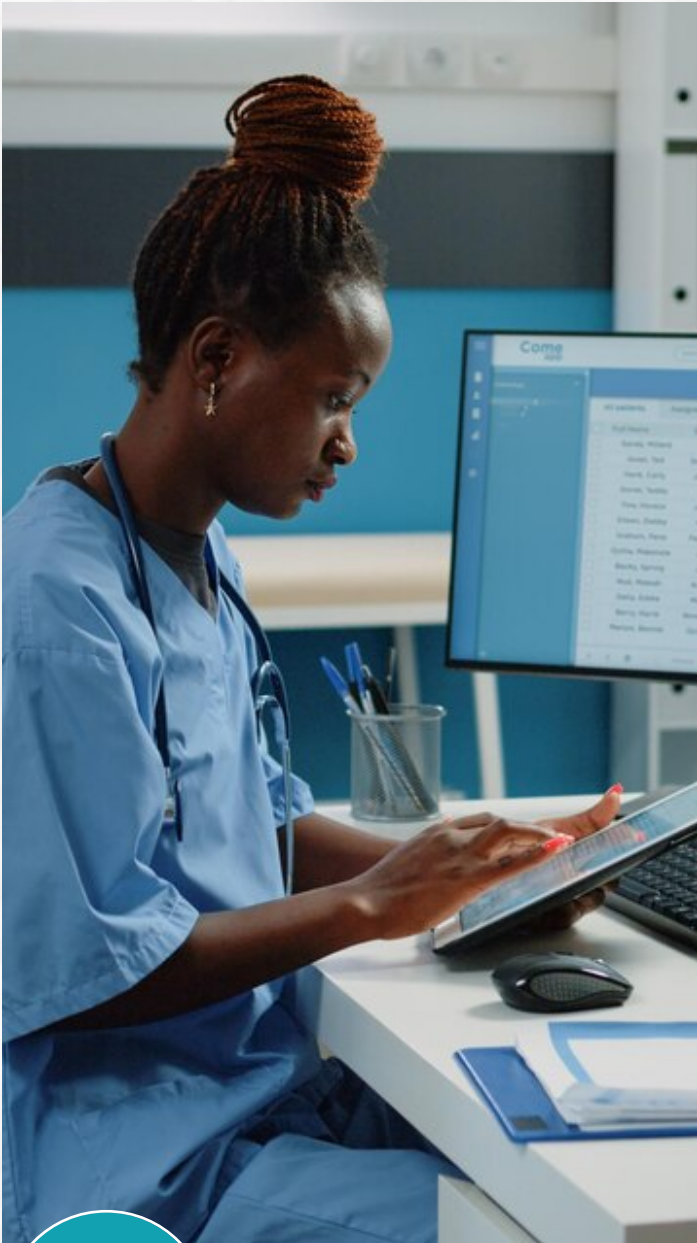
Certified Nursing Assistant Career Path



Complete Health Career CORE, Nursing Assistant, Skills Lab, and optional Clinical to prepare for self-certification through Prometrics.



- Classroom Includes:**
- Skills stations
 - Simulation area
 - Medical equipment



Clinical Medical Assistant C

Prepare to perform various clinical tasks such as assisting with minor medical procedures and administering medications, performing EKG electrocardiograms, obtaining laboratory specimens, etc.

CAE 0747		140 HRS.	\$2,969
MW	01/22-05/01	6:00pm-9:00pm CEN	735575
T	03/19-07/30	9:00am-12:30pm YMCA	736197



This course is designed to prepare students to perform various tasks including assisting with the administration of medications, minor procedures, performing EKG electrocardiograms, obtaining laboratory specimens for testing, educating patients and other related tasks. Students will review important topics including phlebotomy, pharmacology, the proper use and administration of medications, medical records management, vital signs, cardiology including proper lead placements, professional workplace behavior, ethics, and the legal aspects of healthcare. Upon completion, students will be eligible for National Certifications: Certified Clinical Medical Assistant (CCMA), EKG Technician (CET) and Phlebotomy (CPT).

Make
2024
Count!

Your Path to Becoming a Clinical Medical Assistant

Clinical Medical Assistant



Healthcare Core



Medical Assistant



Phlebotomy



EKG

Clinical Medical Assistant Career Path

Successfully complete Health CORE, Admin. Medical Assistant, Phlebotomy, Electrocardiography Technician, to earn the Medical Assistant certification!



RN Specialized Skills Post Licensure Programs:



RN Refresher- Self-paced **S**

The Nurse Refresher Course is designed for nurses returning to the clinical setting. Students will explore current nursing practices and issues and learn about the most up to date standards of practice. A review of body systems, intravenous therapy, fluids and electrolytes, and management of common disorders will provide a level of comfort when returning to patient care.

CAE 0623 **85HRS.** **\$1,499**
 MTWRF 03/19-05/07 Online Central 735605

This interactive course focuses on nurses who have not practiced nursing for an extended period of time, and need to update their "clinical skills" with a strong emphasis on clinical nursing procedures. Nurses will learn current practices, engage with virtual patients, review body systems, intravenous therapy, and management of common disorders, while providing a level of comfort when returning to patient care.

Nurse Refresher components include:

- Infection Control
- Pharmacology Today
- Cardiac System
- Pulmonary System
- Neurological System
- Gastrointestinal System
- Renal System
- Endocrine System
- Musculoskeletal System and Pain Management
- Multisystem Failures
- Emergency Care



Upon completion of the course, students will be prepared to return to work as a Registered Nurse in a clinical setting.

Monday and Wednesday, 6pm - 9pm 3/19 - 5/7/2024

Prerequisites: Must have a RN License
 Contact us for registration cewfd@broward.edu or 954-201-7801.

Possible Employers: Hospitals, Physicians' Offices, Public Health Clinics, Home Healthcare Organizations, Telehealth Organizations, Emergency Rooms, etc.

6%
 Employment of Nurses are expected to grow 6% through 2032 (Bureau of Labor Statistics)

Make 2024 Count!

See below for courses needed to the Workforce.

RN Paths Back to the Workforce



Skill Refresher



Virtual Patient Clinical Scenarios



1-Day Skills Workshop



Clinical Site

Nurse Career Path

Possible Employers: Hospitals, Physicians' Offices, Public Health Clinics, Home Healthcare Organizations, Telehealth Organizations, Emergency Rooms, etc.



Computerized Tomography Lecture C

This course prepares the student with the knowledge and skills in Computerized Tomography Imaging

CAE 0541 **48 HRS.** **\$400**
T 01/09 - 04/30 6:00pm-9:00pm CEN 735208

Computerized Tomography Clinical B

This course is designed to meet the Clinical Experience Requirements for Computed Tomography (CT) Certification as established by the American Registry of Radiologic Technologist (ARRT).

CAE 0651 **120 HRS.** **\$1,362**
MTWRF 01/11-05/09 7:00am-11:00am 735209
Pre-req - Computerized Tomography Lecture

Magnetic Resonance Imaging Lecture C

Acquire the knowledge, attitude and skills to enable you to become a safe and competent in MRI technologist and prepare for an entry-level position as an MRI technologist.

CAE 0622 **48 HRS.** **\$400**
W 01/10-05/01 6:00pm-9:00pm CEN 735210

Magnetic Resonance Imaging Clinical B

This course is designed to meet the clinical experience requirements for Magnetic Resonance Imaging Certification as established by the American Registry of Radiologic Technologist.

CAE 0669 **240 HRS.** **\$1,512**
MTWRF 01/11-05/09 7:00am-11:00pm 735211
Pre-req Magnetic Resonance Imaging Lecture

Basic Arrhythmia B

The Basic Arrhythmia Analysis course is designed to equip the healthcare professional with the necessary skills needed to interpret basic ECG rhythms.

Pre-requisites: Active Licensure (RN, LPN, EMT, PM, Respiratory Therapist, Exercise Physiologist, Radiology Technician)

CAE 0702 **24HRS.** **\$279**
TWR 01/09-01/11 8:30am-4:30pm CEN 736248
TWR 01/23-01/25 8:30am-4:30pm CEN 736249
TWR 02/06-02/08 8:30am-4:30pm CEN 736250
TWR 02/20-02/22 8:30am-4:30pm CEN 736251
TWR 03/12-03/14 8:30am-4:30pm CEN 736252
TWR 03/26-03/28 8:30am-4:30pm CEN 736253
TWR 04/09-04/11 8:30am-4:30pm CEN 736254

IV/Central Lines for Nurses C

The IV/Central Lines for Nurses course is designed to equip the nurse with the skills needed to care for patients receiving IV therapy, blood transfusions, and for those with central venous catheters.

Pre-requisites: Active RN Licensure

CAE 0661 **7.5HRS.** **\$240**
MTWRF 01/10 8:00am-4:30pm CEN 735936
MTWRF 02/28 8:00am-4:30pm CEN 735937
MTWRF 04/17 8:00am-4:30pm CEN 735938

Cardiac Monitoring B

CAE 0713 **40 HRS.** **\$450**
This course provides an introduction to electrophysiology and cardiac rhythm interpretation.
email cewfd@broward.edu for registration details

IV Therapy for Radiology Technologists C

This course is designed for radiographers who are required to provide venous access and administer and assess the use of contrast media. Through this course, the radiographer will obtain essential skills and knowledge necessary for safe practice.

Pre-requisites: Active Licensed Radiology Technologist

CAE 0699 **7.5HRS.** **\$240**
W 02/14 8:30am-4:30pm CEN 736274

Progressive Care B

The progressive care course is designed for the Registered Nurse working in progressive care, telemetry, or step-down areas, and includes essential information and skills necessary for progressive care nursing, along with associated pathological conditions for the progressive care population.

Pre-requisites: Active RN Licensure, Completion of Basic Arrhythmia Analysis

CAE 0761 **40HRS.** **\$500**
MTWRF 01/29-02/02 8:30am-4:30pm CEN 735941
MTWRF 03/18-03/22 8:30am-4:30pm CEN 735942
MTWRF 04/29-05/03 8:30am-4:30pm CEN 735943

Ventilator Management Introduction B

This course reviews the concepts and skills needed to care for patients requiring invasive and noninvasive modes of ventilation and airway management.

Pre-requisites: Active RN or LPN Licensure

CAE 0557 **7.5HRS.** **\$149**
F 01/12 8:00am-4:30pm CEN 736245
F 02/02 8:00am-4:30pm CEN 736246
F 03/15 8:00am-4:30pm CEN 736247

Critical Care Lecture/Skills C

The Critical Care program is designed to provide the Registered Nurse with the knowledge, skills and understanding of caring for high acuity, critically ill patients. Focus is on cardiovascular, pulmonary, neurologic, renal, gastrointestinal, endocrine, hematologic and multi-system disorders.

Pre-requisites: Active RN Licensure, Completion of Basic Arrhythmia Analysis

CAE 0601/CAE0587 **150HRS.** **\$1,874**
MTWRF 01/22-02/16 8:00am-4:30pm CEN TBA/ TBA
MTWRF 03/18-04/12 8:00am-4:30pm CEN TBA/ TBA
MTWRF 04/15-05/10 8:00am-4:30pm CEN TBA/ TBA



Your Specialized Training



Cardiac Monitoring



Perioperative care



Basic Arrhythmia



Critical care

Registered Nurse - Specialized Training

Post Licensure Programs



Steps to Convert Completed CE Courses to College Credit

Register, complete, and earn any of the industry certifications below and obtain college credits that align with Broward College's AS degree programs. *See where you are in your journey on the next page.



Eligible Industry Certification Course	Credit Courses for Credit	Earn Credits	Technical Certificate and AS Degree
CompTIA A+ Comprehensive	A+ Comprehensive	<input checked="" type="checkbox"/>	TC - Information Tech Support Specialist A.S. Technology Project Management
Patient care Technician	Medical Terminology	<input checked="" type="checkbox"/>	TC - Health Care Services Technical Certificate: A.S. Medical Laboratory Technology
Nursing Assistant	Medical Terminology	<input checked="" type="checkbox"/>	TC - Health Navigator A.S. Medical Laboratory Technology
Supply Chain Management with Forklift Simulation	Supply Chain Management	<input checked="" type="checkbox"/>	TC-Logistics & Transportation Specialist AS - Supply Chain Management Operations
Amazon Web Service (AWS) Technical Essentials	Cloud Computing Practitioner	<input checked="" type="checkbox"/>	TC - Cloud Engineering A.S. Network Systems Technology
FREC - Florida Real Estate License	Florida Real Estate Commission	<input checked="" type="checkbox"/>	TC - Real Estate Specialist A.S. Business Administration
Microsoft Office Specialist Excel	Spreadsheet Management	<input checked="" type="checkbox"/>	TC-Office Specialist AS Office Management
Medical Billing & Coding	Records Management	<input checked="" type="checkbox"/>	TC - Medical Office Management AS Medical Office Management
Clinical Medical Assistant	Medical Terminology for Administrative Assistant	<input checked="" type="checkbox"/>	TC - Medical Office Management AS Medical Office Management
Lean Six Sigma Yellow Belt	Concepts of Lean Six Sigma	<input checked="" type="checkbox"/>	TC - Lean Six Sigma Green Belt AS Technology Project Management
Phlebotomy Technician	Phlebotomy	<input checked="" type="checkbox"/>	AS Medical Laboratory Technology



(Non-Credit programs)

Individual Training**WIOA Individual Training Account (ITA)**

Need help paying for Career Training? If you're a Broward County resident, you may be eligible to receive a scholarship of up to \$12,000 from CareerSource Broward for the in-demand career training programs below at Broward College. <https://ext.careersourcebroward.com/ITASync/Scholarships.aspx>

Programs approved for WIOA funding

- Certified Associate in Project Management (CAPM)
- Certified Information Security Manager*
- Certified Information Systems Auditor*
- CompTIA A+, Network+, Security+ Certifications*
- CompTIA A+ Certification Training
- Certified Clinical Medical Assistant (CCMA)
- Medical Billing and Coding Professional
- Florida 2-20 Property/Casualty Ins. Pre-License*
- Florida 20-44 Personal Lines Agent Pre-License*
- Florida 3-20 and 6-20 Claims Adjuster*
- Florida 4-40 to 2-20 Conversion Pre-License*
- Florida Health and Life Insurance Pre-License*
- Full Stack Software Developer
- Human Resources Professional
- HVACR Technician*
- Certified Paralegal
- Information Security Training*
- Project Management Essentials with CAPM® Prep
- Purchasing and Supply Chain Management
- Six Sigma Black Belt*
- Six Sigma Green Belt*
- And More!



Scholarships



Discounts



Student Loan Programs



Government Funding

Business Grants**Quick Response Training. (QRT)**

Funds businesses like yours to implement flexible and customized training for your new, full-time, permanent employees. Available only to new and expanding companies in Florida's booming business market. Quick Response Training provides funds to create specialized training specifically for your high-skill industry.

<https://careersourceflorida.com/business-services/training-grants/qrt>

Incumbent Worker Training. (IWT)

Florida's Incumbent Worker Training grants can help. The program provides grants for continuing education and training of current full-time employees at **Florida companies**. <https://careersourceflorida.com/business-services/training-grants/iwt/>

For information, 954-201-7800
ce@broward.edu

Military Spouse**MyCAA Military Spouse Funding**

As a military spouse of an active-duty service member, you have options when it comes to your education. In fact, you may qualify for \$4,000 through the My Career Advancement Account Scholarship (MyCAA) to pursue training and professional certifications. Broward College offers MyCAA-approved 100 % online courses that you can complete anywhere, anytime—at your own pace. For more information on this grant, visit

<https://www.broward.edu/academics/continuing-education/programs/my-caa-military-spouse-funding.html>

Programs approved for MyCAA funding

- 40 hr 6-20 -All Lines Accredited Claims Adjuster
- 40hr 4-40 RCSR - Registered Customer Rep
- 60 hr 2-15 Health and Life Insurance (3 months)
- 60 hr 2-15 Health and Life Insurance (6 months)
- ACSM Personal Training
- Assisted Living Technician with Clinical Externship
- Certified Administrative Professional
- Certified Electronic Health Records Specialist
- Certified Medical Administrative Assistant
- Certified Clinical Medical Assistant
- Certified Information Security Manager
- Certified Information Systems Auditor
- Certified Information Systems Security Professional
- Cisco CCNA Certification Training
- Cisco CCNP Security
- Clinical Medical Assistant
- CompTIA A+ Certification Training
- CompTIA Cert. Training: A+, Network+, Security+
- EKG Technician Certificate
- Human Resources Professional
- Mastering Project Management
- Medical Administrative Assistant
- Medical Billing and Coding
- Patient Access Representative
- Pharmacy Technician Certificate
- Phlebotomy Technician Certificate
- Real Estate CE Bundle
- Real Estate Sales Associate
- Registered Behavior Technician

Healthcare Program Funding

The HealthPRO Grant at Broward College has scholarships to cover tuition of the following approved programs:

Scholarship approved for HealthPRO Grant Funding:

- Medical Assistant
- Certified Nursing Assistant (CNA)

Clinical Medical Assistant

For eligibility requirement contact: kguy2@broward.edu

Pre-Payment Plan

www.broward.edu/students/cashier/



Exam prep

Open Door

Broward College Rapid Credential Funding

If you are unemployed or underemployed and want to UPSKILL, enroll in an occupational training course that leads to an industry-recognized credential that COUNTS for school and/or work. SCHOLARSHIPS available at BC. Florida residency of 12 months or equivalent

TUITION ASSISTANCE OPEN DOORS FUNDING

Course	Length	Tuition
CompTIA A + Certification Training (Vouchers Included)	1-Month	\$1,995
CompTIA Linux+ (Vouchers Included)	1-Month	\$1,295
CompTIA + Network+ Certification Training (Vouchers Included)	1-Month	\$1,895
CompTIA Project+ (Vouchers Included)	1-Month	\$1,695
CompTIA Security+ Certification Training (Vouchers Included)	1-Month	\$1,895
CompTIA Cloud Certification Training (Vouchers Included)	1-Month	\$1,695
Adobe Certified Professional in Video Design (Voucher Included)	1-Month	\$1,495
AWS Technical Essentials for Cloud Practitioners	1-Month	\$1,995
Certified AWS Developer (Vouchers Included)	1-Month	\$1,995
Healthcare IT Technician (A+ Cert)	1-Month	\$4,000
Medical Billing and Coding	1-Month	\$2,199
CCSP-Certified Cloud Security Professional	1-Month	\$3,099
Certified EKG Technician (CET)	1-Month	\$1,649
Certified Electronic Health Record Specialist (CEHRS)	1-Month	\$1,649
CEH (v12) - Certified Ethical Hacker	1-Month	\$3,099
CISSP - Certified Information Systems Security Professional	1-Month	\$3,099
Certified Clinical Medical Assistant (CCMA)	1-Month	\$1,649
Certified Clinical Medical	1-Month	\$2,969
Nursing Assistant	1-Month	\$2,499
Certified Patient Care Technician (CPCT)	1-Month	\$2,399
Certified Pharmacy Technician (CPhT)	1-Month	\$1,649
Certified Phlebotomy Technician (CPT)	1-Month	\$1,649
NCSF Certified Strength Coach (Voucher Included)	1-Month	\$ 595
Child Development Associate - Center-Based (Voucher Included)	1-Month	\$1,695
Cisco CNNA Certification Training (Vouchers Included)	1-Month	\$ 895
CompTIA Fundamentals (Vouchers Included)	1-Month	\$2,895
Computer Hacking Forensics Investigator (CEFI) (Voucher Included)	1-Month	\$2,895
Certified Network Defender (CND) (Vouchers Included)	1-Month	\$4,000
Medical Laboratory Assistant (CMLA)	1-Month	\$1,995
AZ-104 Microsoft Azure Administrator (Voucher Included)	1-Month	\$1,995
AZ-104 Microsoft Azure Fundamentals (Voucher Included)	1-Month	\$2,295
Microsoft Office Specialist (MOS) Certification	1-Month	\$1,649
Pharmacy Technician	1-Month	\$ 999
PMI-ACP Certification	1-Month	\$ 999
PMI Project Management Ready	1-Month	\$2,080
SCPro Fundamentals Bundle (8 exams)	1-Month	\$1,995
Certified Six Sigma Black Belt	1-Month	\$1,695
Lean Six Sigma Green Belt (Exam Cost Included)	1-Month	\$ 299
Remote Pilot in Command FAA Certificate	1-Month	\$ 595
NCSF Sport Nutrition Specialist (Vouchers Included)	1-Month	

3 Easy steps to earning a certificate

Step 1 Scholarship Application

After you complete the Information form, you will receive an email with an Information Session invite.

Step 2 Attend an orientation

Sign up to find out more about your course options. Speak to an advisor about job growth and certification requirements and eligibility. Dates coming soon!

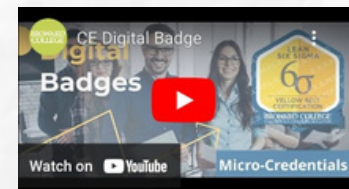
Please contact us for more information to RSVP for an orientation: 954-201-7800 or ce@broward.edu

Step 3 Register in Your Course

A career pathway navigator will be there to assist you with registering into your class and getting your class fees paid. Start dates and course logistics will be provided at this time.

EARN your Micro Credentials & DIGITAL BADGE

Share your accomplishments with colleagues and employers



Earn, Stack, and Share your Micro-Credentials: Step 1: Select and Enroll in a Micro-Credential course. Step 2: Complete Requirements and receive Micro-Credential. Step 3: Earn your Badge. Step 4: Share your Micro-Credential & Digital Badge on: LinkedIn and other social media platforms, Resume, embed in your e-mail signature.



Benefits of our online courses

Obtain in-demand certificates and credentials to help launch or expand your career in a field that interests you. Discover personalized support from our Student Advisors and Enrollment Representatives make sure all your questions are answered at every step of your education journey—from selecting the right course to your job search. Most of our online courses include certificate exam fees included. Open enrollment, begin anytime



MyCAA Military Spouse Funding

Obtain the skills to improve your employment in **high-demand occupations** with these industry credentials - 100% covered

MyCAA-Approved Courses

- 6-20 -All Lines Accredited Claims Adjuster
- 4-40 RCSR - Registered Customer Rep
- 2-15 Health and Life Insurance (3 months)
- 2-15 Health and Life Insurance (6 months)
- ACSM Personal Training
- Assisted Living Technician with Clinical Externship
- Certified Administrative Professional
- Certified Electronic Health Records Specialist
- Certified Medical Administrative Assistant
- Certified Clinical Medical Assistant
- Certified Information Security Manager
- Certified Information Systems Auditor
- Certified Information Systems Security Professional
- Cisco CCNA Certification Training
- Cisco CCNP Security
- Clinical Medical Assistant
- CompTIA A+ Certification Training
- CompTIA Cert. Training: A+, Network+, Security+
- EKG Technician Certificate
- Human Resources Professional
- Mastering Project Management
- Medical Administrative Assistant
- Medical Billing and Coding
- Patient Access Representative
- Pharmacy Technician Certificate
- Phlebotomy Technician Certificate
- Real Estate CE Bundle
- Real Estate Sales Associate
- Registered Behavior Technician

Learn your way

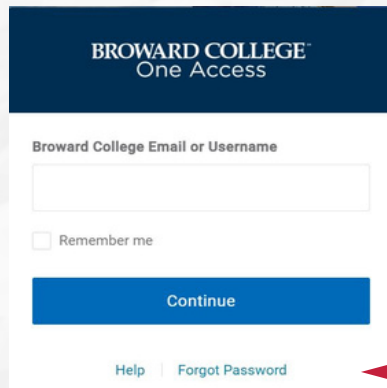
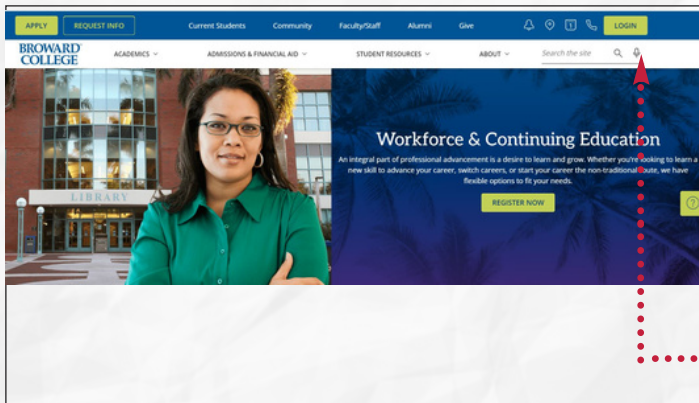
B Blended Classroom
S Self-guided with Instructor
O Online Self-paced
C On-campus Classroom





Create/Access Account

You must have a Broward College CE account to register for all course sections, make payments and access account information. Please follow directions below to access and/or create an account.



- Navigate to your web browser address bar and enter the following:
www.broward.edu/ce
- Click Login
- Existing Users: Sign-in with the credentials associated with your account
 - Use [Find My Username](#) to verify username by providing the student ID associated with your account (contact ce@broward.edu for assistance).
- Use [Forgot Password](#) to reset your account password.
You must have access to this email account to reset your password. Use the link provided to reset your password
- New User:
[Create New Account](#) and submit an application if you are a new student.

Online Registration

- Select a category or review full course listing.
- When selecting a category, a list of courses will be displayed.
- Select a course to view.
- Select your desired course section and add to cart.
- Once item is added, you will be directed to your shopping cart.
- Review all The Continuing Education Program's Policies and Procedures.
- Click Check Out.
- Sign-in or create a new account through the "apply" option
- Confirm payment method and enter Billing Information.



REGISTRATION | Students must register and pay for each course before they attend the first class meeting. There is no application fee for Continuing Education students and tuition is the same for Florida residents and non-Florida residents. All classes listed in this brochure are non-credit and are not applied toward a degree at Broward College (unless otherwise stated).

CAMPUS - IN PERSON | Go to the Registration office on A. Hugh Adams Central Campus, North Campus or Judson A. Samuels South Campus.

ONLINE | Follow the directions for application, registration and payment.

Go to www.broward.edu/ce

Click the "Register for Courses"

1. Select "Continuing Education" Division and choose a subject under Advanced Search
2. Click "Search"
3. Identify your course then add to cart
4. Click "Proceed to checkout"

REGISTRATION ASSISTANCE | Email ce@broward.edu or call 954-201-7800

LEARNING OPTIONS | Online Live, Classroom, Online Courses, Customized Training, On-demand Learning, Self Paced

COURSE CANCELLATION | Broward College reserves the right to cancel any course that does not meet student enrollment requirements. If insufficient enrollment requires cancelling of a course, tuition fees will be fully refunded. Continuing Education reserves the right to cancel or reschedule courses in the event of inclement weather, college emergencies, extenuating circumstances beyond the college's control. Course schedule may transition to online learning or rescheduled to ensure successful course completion. Students will be contacted if cancellation impacts their schedule.

WITHDRAWALS AND TRANSFERS | **Withdrawals:** A student may withdraw from a course or educational activity that has not started, by logging onto their Broward College account. The student will receive a 100 % refund between 10-15 business days back to the original method of payment used.

Refunds: Students who register and pay for an educational activity, but do not attend, forfeit the entire registration fee. Online, Remote Learning, and Online-Live classes are not refundable once the class has begun. Email ce@broward.edu

SPRING | JAN- MAY 2024 – HOLIDAYS AND DAYS OFF

- January 15: Martin Luther King Jr. day
- February 23: Professional Development day
- March 4 - 10: Spring Break

ACCESSIBILITY OFFICE | 954-201-7517

CAMPUS SAFETY | 954-201-4357 (HELP)

PAYMENT PLAN | www.MyCollegePaymentPlan.com/broward



PARKING | All campuses except Willis Holcombe Center (Downtown): After registering and paying for your class(es), print out your parking permit, located online at www.broward.edu/ce. Click on "Continuing Education." Under Resources, click on "Print Parking Permit." Students must park in student parking spaces.

CAMPUS LOCATIONS

CEN - A. Hugh Adams Central Campus
3501 Davie Road, Davie, FL 33314

MTC - Miramar Town Center (2nd floor — library)
2050 Civic Center Place, Miramar, FL 33025

MWC - Miramar West Center
1930 SW 145th Avenue, Miramar, FL 33027

NOR - North Campus
1000 Coconut Creek Blvd., Coconut Creek, FL 33066

PIN - Pines Center
16957 Sheridan Street, Pembroke Pines, FL 33331

SOU - Judson A. Samuels South Campus
7200 Pines Blvd., Pembroke Pines, FL 33024

TIG - Tigertail Lake Recreational Center
580 Gulfstream Way, Dania Beach, FL 33004

WES - Weston Center (2nd floor library)
4205 Bonaventure Boulevard, Weston, FL 33332

WHC - Willis Holcombe Center
111 East Las Olas Blvd., Fort Lauderdale, FL 33301

OFFSITE LOCATIONS

WEB - Online, anytime, anywhere

YMCA - YMCA 1409 NW 6th St. Fort Lauderdale, FL 33311

SUN - Sunshine Health 1299C NW 40th Ave, Lauderhill, FL 33313



**REGISTER
NOW!**



BEGIN YOUR CAREER PATH NOW!

BROWARD COLLEGE®



[BROWARD.EDU/CE](https://www.broward.edu/ce)

Broward College does not discriminate on the basis of race, color, sex, gender, national origin, religion, age, disability, marital status, sexual orientation, gender identity, genetic information or other legally protected classification in its programs and activities.