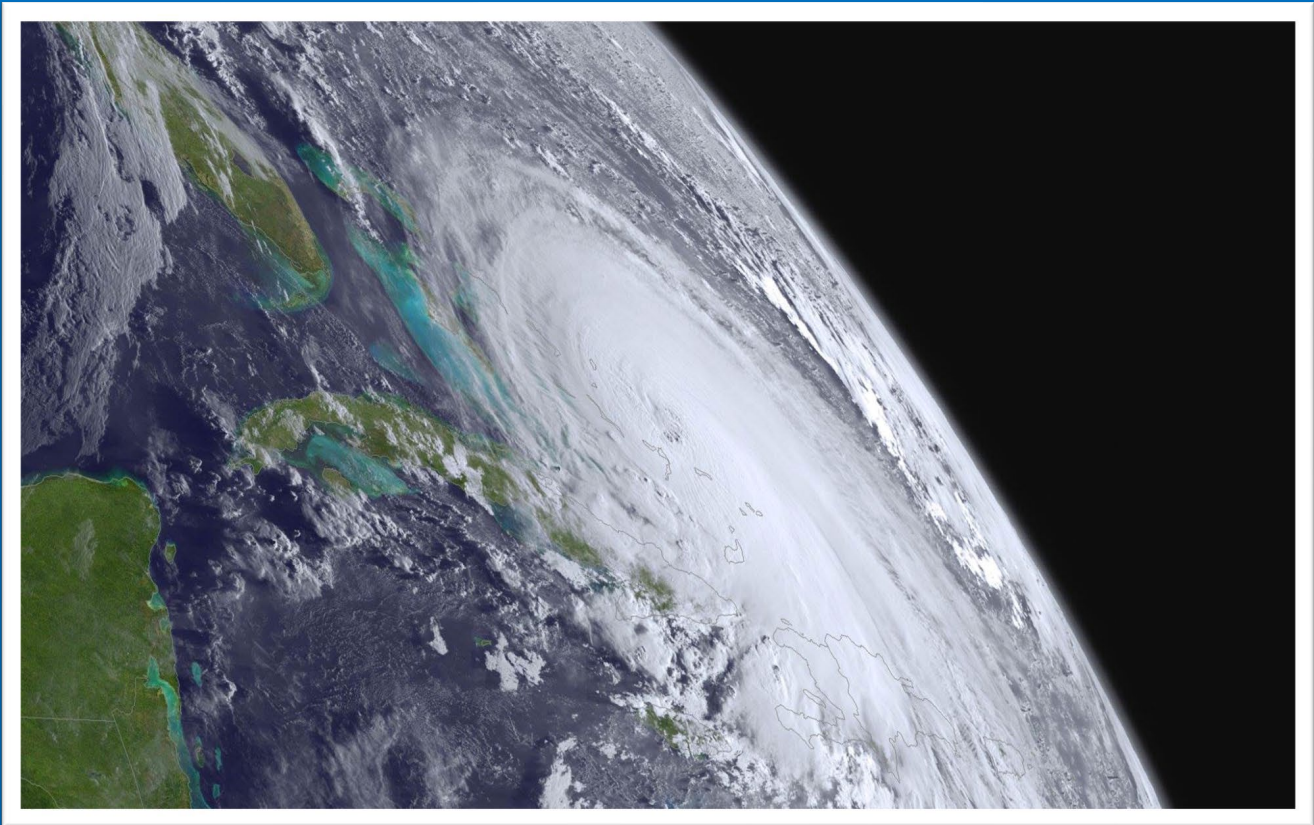


# BROWARD COLLEGE HURRICANE SAFETY ACTION GUIDE



# **SAFETY, SECURITY and EMERGENCY PREPAREDNESS**

**BROWARD COLLEGE™** ————— **954-201-HELP (4357)**



<b>Introduction</b>	<b>3</b>
<b>2025 Storm Names and Tracking Chart</b>	<b>4</b>
<b>Saffir-Simpson Scale and Alert Levels</b>	<b>5</b>
<b>Enhanced Fujita Tornado Damage Scale</b>	<b>6</b>
<b>Hurricane / Tropical Storm Alerts</b>	<b>7</b>
<b>Shelter Options</b>	<b>8</b>
<b>Emergency Shelter Map</b>	<b>9</b>
<b>Emergency Evacuation Map</b>	<b>10</b>
<b>Basic Hurricane Emergency Supply Kit</b>	<b>11</b>
<b>House Checklist –Preparing Your Home</b>	<b>12</b>
<b>Communications from College</b>	<b>13</b>

## HURRICANE SEASON

June 1<sup>st</sup> begins the hurricane season, which extends through November 30<sup>th</sup>. The health, safety, and welfare of our students, faculty, and staff are of the utmost importance, and we want to assure you that Broward College is prepared for hurricane season.

We remain hopeful that South Florida is spared from storms this season, but we will be prepared should our service area be threatened. We will continuously monitor weather reports and share key information with you.

This guide is a quick reference for the general College community to plan for and respond to hurricane and severe weather situations. This document aims to provide a baseline of information to ensure we are prepared for hurricane season as a community. The document contains useful information concerning personal safety, severe weather terminology, developing a personal emergency plan, creating an emergency kit, and general safety tips.

The Broward College Comprehensive Emergency Management Plan and Severe Weather Plan are available on the Department of Safety, Security and Emergency Preparedness website at [www.broward.edu/safety](http://www.broward.edu/safety).



# 2026 ATLANTIC STORM NAMES & TRACKING CHART

ARTHUR

HANNA

OMAR

BERTHA

ISAIAS

PAULETTE

CRISTOBAL

JOSEPHINE

RENE

DOLLY

KYLE

SALLY

EDOUARD

LEAH

TEDDY

FAY

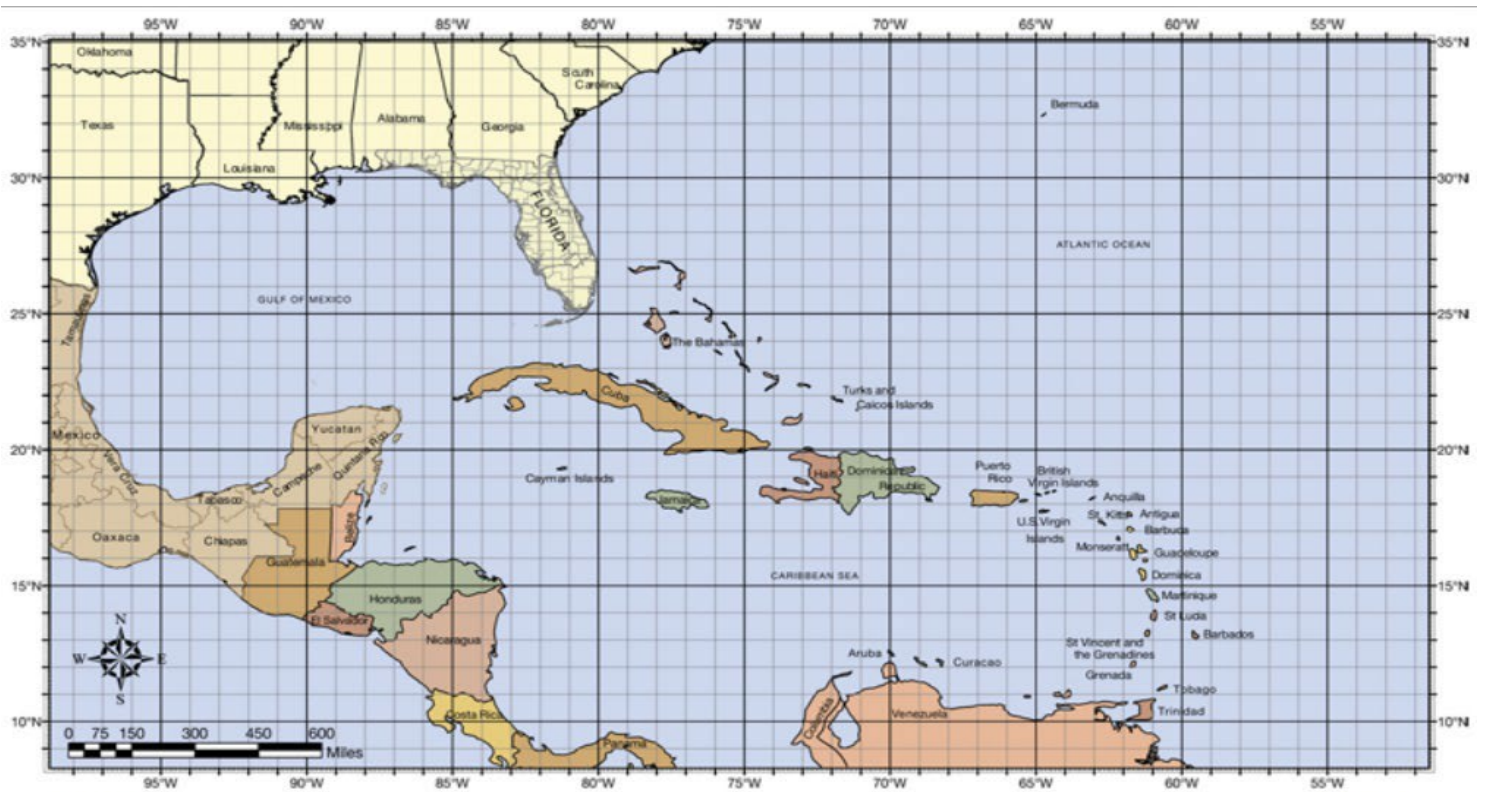
MARCO

VICKY

GONZALO

NANA

WILFRED



## Hurricane Tracking Map

[www.FloridaDisaster.org](http://www.FloridaDisaster.org)



## CATEGORY 1

Sustained Winds: 74-95 MPH

Types of Damage: Very dangerous winds will produce some damage: Well-constructed frame homes could have damage to roof, shingles, vinyl siding and gutters. Large branches of trees will snap, and shallowly rooted trees may be toppled. Extensive damage to power lines and poles likely will result in power outages that could last a few to several days.

## CATEGORY 2

Sustained Winds: 96-110 MPH

Types of Damage: Extremely dangerous winds will cause extensive damage: Well-constructed frame homes could sustain major roof and siding damage. Many shallowly rooted trees will be snapped or uprooted and block numerous roads. Near-total power loss is expected with outages that could last from several days to weeks.

## CATEGORY 3

Sustained Winds: 111-129 MPH

Types of Damage: Devastating damage will occur: Well-built framed homes may incur major damage or removal of roof decking and gable ends. Many trees will be snapped or uprooted, blocking numerous roads. Electricity and water will be unavailable for several days to weeks after the storm passes.

## CATEGORY 4

Sustained Winds: 130-156 MPH

Types of Damage: Catastrophic damage will occur: Well-built framed homes can sustain severe damage with loss of most of the roof structure and/or some exterior walls. Most trees will be snapped or uprooted, and power poles downed. Fallen trees and power poles will isolate residential areas. Power outages will last weeks to possibly months. Most of the area will be uninhabitable for weeks or months

## CATEGORY 5

Sustained Winds: 157+ MPH

Types of Damage: Catastrophic damage will occur: A high percentage of framed homes will be destroyed, with total roof failure and wall collapse. Fallen trees and power poles will isolate residential areas. Power outages will last for weeks to possibly months. Most of the area will be uninhabitable for weeks or months.

EF RATING	WIND SPEEDS
<b>EF-0</b>	65-85 MPH
<b>EF-1</b>	86-110 MPH
<b>EF-2</b>	111-135 MPH
<b>EF-3</b>	136-165 MPH
<b>EF-4</b>	166-200 MPH
<b>EF-5</b>	200+ MPH



The National Weather Service will begin issuing tropical storm and hurricane alerts leading up to a potential hurricane. Understanding the difference between them is critical in being prepared. The National Hurricane Center shares the information below:

## TROPICAL STORM WATCH

An announcement that tropical storm conditions are possible within the specified area.

## HURRICANE WATCH

An announcement that hurricane conditions are possible within the specified area.

Because outside preparedness activities become difficult once winds reach tropical storm force, **watches are issued 48 hours before the anticipated onset of tropical-storm-force winds.**

*Action: During a watch, prepare your home and review your plan for evacuation in case a Hurricane or Tropical Storm Warning is issued. Listen closely to instructions from local officials.*

## TROPICAL STORM WARNING

An announcement that tropical storm conditions are expected within the specified area.

## HURRICANE WARNING

An announcement that hurricane conditions are expected within the specified area.

Because outside preparedness activities become difficult once winds reach tropical storm force, **warnings are issued 36 hours before the anticipated onset of tropical-storm-force winds.**

*Action: During a warning, complete storm preparations and immediately leave the threatened area if directed by local officials.*

## EXTREME WIND WARNING

Extreme sustained winds of a major hurricane (115 mph or greater), usually associated with the eyewall, **are expected to begin within an hour.**

*Action: Take immediate shelter in the interior portion of a well-built structure.*

Additional Watches and Warnings may be issued to provide detailed information on specific threats such as floods and tornadoes. Local National Weather Service offices issue Flash Flood/Flood and Tornado Watches and Warnings.

## SHELTER OPTIONS

### Stay Outside of Evacuation Zone

The best option is to remain outside the evacuation zone. If you are in the evacuation zone, look to stay with friends or family who reside outside of the evacuation zone if possible.



### Stay In A Shelter

American Red Cross provides general population shelters that are established with a basic level of care and open to all. Pre-registration is not required. When you arrive at the shelter, communicate with staff personnel if you have any specific needs, so they are aware. For specific shelter locations click on the following link: [Emergency Shelter Map](#)

## SHELTER REGISTRATION

You should always have a plan developed for shelter regardless of whether you will be sheltering at home, outside of evacuation zones, or at a shelter. Pre-registration for most shelters is not required but encouraged. Please remember that if you pre-register for a shelter, you are not obligated to go to the shelter if an emergency or disaster presents itself.

## TRANSPORTATION TO SHELTERS

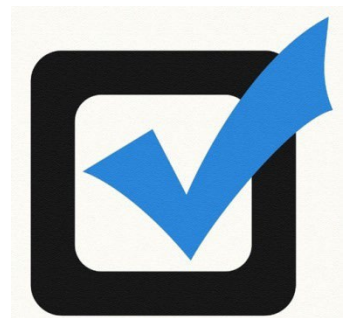
As directed by government officials, when an evacuation is ordered, the Broward County Transit buses divert from regular scheduled service and begin assisting with transportation from evacuation zones. As the Broward County Emergency Management Division states, you may go to any regular bus stop along A1A under evacuation Plan A. Under Plan B, buses will run routes along A1A and Federal Highway.

## PET-FRIENDLY SHELTER REGISTRATION

Service animals are permitted in all shelters. Pet-friendly shelters are available for non-service animals and owners living in Broward County. As the Broward County Emergency Management Division explains, preregistration is required and may be accomplished by contacting the **Humane Society** at **954-989-3977** or visiting **HumaneBroward.com** for details.

## SHELTER KIT CHECKLIST

- |   |  |   |
|---|--|---|
| <input type="checkbox"/> Personal hygiene items | <input type="checkbox"/> Bedding such as pillows, blankets | <input type="checkbox"/> Books, games   |
| <input type="checkbox"/> Non-perishable snacks  | <input type="checkbox"/> Needed Medications                | <input type="checkbox"/> Identification |
| <input type="checkbox"/> Cash                   | <input type="checkbox"/> Personal items such as eyeglasses | <input type="checkbox"/> Flashlights    |
| <input type="checkbox"/> Important documents    | <input type="checkbox"/> PPE (Gloves, Masks, etc.)         |   |

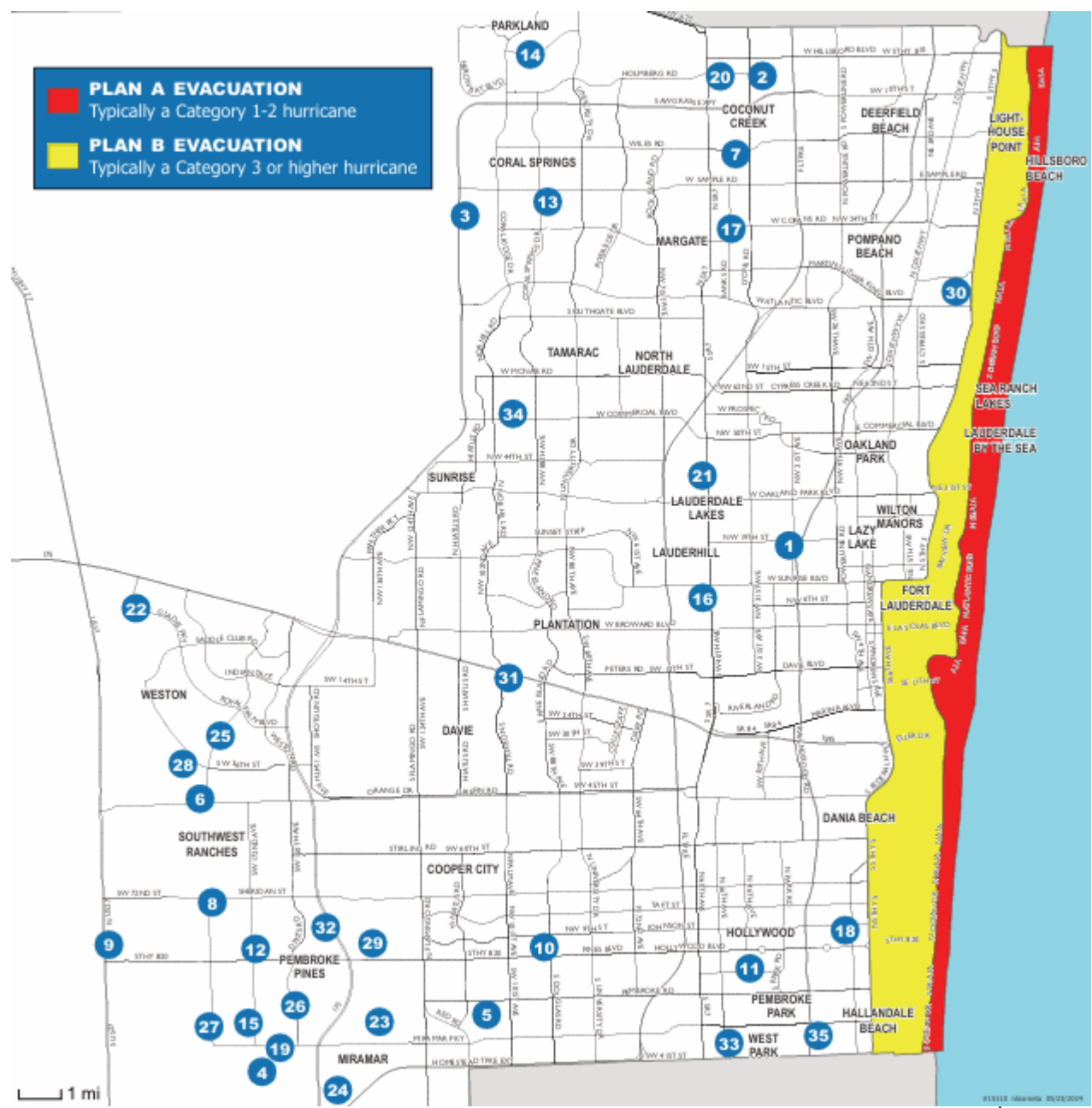




# EMERGENCY SHELTER MAP

The following shelters may not all open during a state of emergency. They are opened as needed. If possible, staying with family or friends outside an evacuation zone is your first and best option. Monitor Broward County's website, [Broward.org/Hurricane](http://Broward.org/Hurricane), local television stations or call our Emergency Hotline at 311 or 954-831-4000 for actual shelter openings. Emergency shelters are a service of the Broward County Commission and the Broward County School Board.

If you are located in low lying areas or beside tidal bodies of water, seek shelter elsewhere if conditions warrant. **ALL** mobile home residents must evacuate in PLAN A and PLAN B and may be ordered to evacuate if tropical storm conditions warrant.





# EMERGENCY EVACUATION MAP

- **Evacuation Plan A**  
 All residents east of the Intracoastal Waterway, mobile home residents, residents beside tidal bodies of water and in low-lying areas should evacuate
- **Evacuation Plan B**  
 All residents east of U.S. 1 (Federal Highway), mobile home residents, residents beside tidal bodies of water and in low-lying areas should evacuate

**If you live in an evacuation zone and an evacuation is ordered, you are required by law to evacuate.**

- Leave when local government officials issue a mandatory evacuation order for your area.
- Evacuate to a family or friend's home or hotel outside the evacuation area. Shelters provide for basic needs only and are a choice of last resort.
- Tell someone outside the storm area where you are going.
- Take your hurricane kit and important papers with you.



## BASIC HURRICANE EMERGENCY KIT CHECKLIST



**Water-** To store water, use food-grade containers.

- At least one gallon per person per day for three to five days.
- Water for each person per day for cooking and personal hygiene
- Don't forget water for pets as well

### Ice

Freeze water in zip-type freezer bags and other storage options. Ice can be used to preserve food should the power go out.

**Food-** At least three to five days.

- Non-perishable packaged and/or canned food.
- Ready-to-eat canned meats and/or soups.
- Canned goods, box juice, & milk.

### For The Home

- Flashlights & extra batteries
- Battery-operated or hand crank weather radio
- Battery-operated lanterns
- Batteries (in different sizes)
- Matches
- First-Aid kit
- Duct tape
- Plastic garbage bags
- Scissors
- Can opener
- Clean clothes
- Work/heavy gloves
- Toolkit and/or multi-tool
- Personal and important documents
- Cell phones with chargers
- Emergency contact information
- Cash

### Specialty Items

- Medical supplies
- Baby supplies
- Pet supplies
- Sanitation items
- PPE (Masks, Gloves, Sanitizer, etc.)
- Personal hygiene items



- Remove and/or secure outdoor items
- Trim dead branches from trees
- Close windows, doors, and hurricane shutters. If you do not have hurricane shutters, close and board up all windows and doors with plywood.
- Fill gas tanks and extra containers
- Move furniture away from windows
- Turn the refrigerator and freezer to the coldest setting and keep them closed as much as possible so food will last longer if the power goes out
- Turn off propane tanks and unplug small appliances
- Check your hurricane emergency kit

Broward College has a multi-layered approach to emergency communications should a storm threaten South Florida. You can keep up to date on the College's status through the Broward College website at [www.broward.edu](http://www.broward.edu) and through specific hotlines:

**Broward College Student Hotline: 954-982-7142**

**Broward College Employee Hotline: 954-982-7143**

In addition, the BC Alert system is used to disseminate emergency notifications. The BC Alert system includes telephone calls, text messages, social media posts, and emails sent to Broward College students, staff & faculty. This system will not be used to communicate shelter information or evacuations notices. It is very important to remain informed through your local news, the National Weather Service or local associations or affiliates, on how the storm will impact you individually specific to the evacuations or shelter locations near you. For the BC Alert system to be most effective, users should **review and update their contact information** as necessary. Visit [www.broward.edu/BCALERT](http://www.broward.edu/BCALERT) for more information.

Faculty/Staff:

1. [Log in to One Access](#) and select the Workday tile.
2. Click on your name in the upper right corner of the screen.
3. Click on "View Profile."
4. Select "Contact."
5. Select "Edit" and update your contact information appropriately.
6. When finished, click on "Submit."

\* Please note that to receive SMS/text message notifications, you must have at least one item under your phone category identified as a mobile (within phone device field).

Students:

1. [Log in to One Access](#) and select the MyBC tile.
2. Bring the cursor to the 'Personal' tab and select 'Change Address'.
3. Review and update as necessary.
4. Scroll down to the bottom of the page and click the 'Update'.