



Music Student Handbook

Visual and Performing Arts Department

Broward College

Building 4, Central Campus

3501 SW Davie Road

Davie, Florida 33314

Table of Contents

Mission, Goals, and Objectives	1
Information for New Students	3
Faculty and Staff Directory	5
Self-Advising Worksheet for New Music Students	6
Audition Information for New Music Majors	8
Music Scholarship Policies.....	9
Music Curriculum	
Policies and Guidelines for Applied Music Lessons	11
(General information and student recital information)	
Ensembles.....	13
Specific Curriculum for Music Majors.....	15
Miscellaneous Forms	
Curriculum Map	16
Sample Applied Music Lesson Grading Form	17
Sample Student Recital Program Information Form	18

Broward College

Visual and Performing Arts Department

Music

Mission, Goals, and objectives

The primary **mission** of the music unit at Broward College is *to provide a comprehensive program of educational opportunities in music for Broward County.*

Our **goals** in accomplishing this mission show the desire to achieve true academic and artistic excellence. We support both students and the community by:

- Serving as an entry point for students pursuing an Associate's Degree in music.
- Preparing music majors for transfer to upper-division institutions.
- Creating educational opportunities for the non-music major.
- Serving as a musical center for the residents of Broward County.

We seek to accomplish our mission and goals by using the following strategies and objectives:

- Evaluating entering music students' readiness to pursue college-level music work, both course work and performance.
- Offering preparatory classes and applied lessons to bring students' skill level to college level.
- Offering music classes, ensembles, and applied lessons that develop skills of music majors to the junior-year level.
- Offering classes, ensembles, and lessons as required by upper-level institutions for transfer music majors.
- Offering general music classes and lessons appropriate to the non-music major.
- Providing highly skilled faculty to train students in applied lessons as well as coursework.
- Sharing faculty expertise with the community by serving as clinicians and adjudicators.
- Providing information to the community as a music resource.
- Providing opportunities for community members and non-music majors to participate in large and small college ensembles.
- Providing inexpensive performances by college ensembles and faculty in college concert halls and in community facilities.
- Maintaining a comprehensive collection of sound recordings.

**Broward College is accredited by the National Association of Schools of Music (NASM),
11250 Roger Bacon Drive, Suite 21 Reston, VA 20190-5248.
Telephone: 703-437-0700, E-mail: info@arts-accredit.org**

Information for New Students

General Information:

Music students new to Broward College and first-time college students must decide if they wish to take music classes as a general student or if they wish to pursue music as a college major. General students are welcome to take applied music lessons at the secondary level, participate in ensembles, and take music classes as appropriate. Music majors are required to take a full schedule of music classes for four semesters. They are also required to audition for admission to the full music-major program of classes and lessons. See detailed information about the curriculum for music majors on pages 10 – 16 of this handbook. Music- major classes are offered on Central Campus only.

Advising:

As a first step, new music students should complete the self-advising worksheet on pages 5-6 of this handbook. The worksheet gives the student a good idea about whether music is a suitable college major. If the decision is made to major in music, the next step is to be advised/auditioned by one of Broward College's Music Faculty. Please see the secretary in bldg. 4, room 130 to set up an appointment **before the term begins**. More information about these auditions can be found on page 7.

College studies as a pre-music major would require taking college preparatory applied lessons and Fundamentals of Music (pre-music theory), or secondary applied music lessons and music classes as a non-music major. Students transferring from other colleges should contact the music office for advising.

Evaluation:

All music students abide by the College's academic standards of progress; see the most recent version of the catalog for complete information. Music majors also have further evaluation each semester by grading in juries and in student recitals.

Practice Rooms:

All currently enrolled music students taking applied lessons are permitted to use the practice rooms located in Bldg. 4. An access card is required, and can be obtained in the music office – building 4, room 130 with a Broward College ID. Most practice rooms are equipped with a piano. Use of the rooms is on a "first-come, first-served" basis. The practice rooms are open Monday – Friday from 7:30 a.m. – 10:00 p.m. and on Saturdays from 7:30 a.m. – 7:00 p.m. Bldg. 4 is closed on Sundays.

Library Materials:

The University/College Library in Bldg. 17, Central Campus, contains books, periodicals, and online data bases containing music materials. Audio materials (CD's, DVD's, and videos) and computer facilities for music are located in Room 145, Bldg. 4. Music scores are available from the extensive score collection at the Broward County Public Library, Main Branch, located at 100 S. Andrews Avenue, Fort Lauderdale; their extensive score collection can be reviewed at www.browardlibrary.org.

Copyrights:

Students must purchase original scores of works studied in applied music lessons; photocopies are not permitted in jury final exams or students recitals.

Student, Faculty & Staff performers will assume all costs arising from the use of patented, trademarked, franchised or copyrighted non-dramatic music, materials, devices, processes or intellectual properties used on or incorporated in the event. Student, Faculty & Staff performers indemnify, defend and hold harmless Broward College from any claims or costs, including legal fees, which might arise from question of use of any such material described above. This policy shall be in force on all Broward College campuses or at Broward College sanctioned events performed at off campus venues. Classical and Jazz recordings are available online through the Broward College Library at <http://www.linccweb.org/eResources.asp?DB=classical&CID=03>.

Health statement:

Prolonged exposure to high-volume sound can be detrimental to aural health. Even though Broward College facilities comply with OSHA standards, individual student activity may exceed acceptable levels of noise. Hearing is musician's greatest treasure; treat it well.

Singing or playing any musical instrument can lead to musculoskeletal and neurological injuries, especially if used incorrectly. Please discuss any pain or fatigue with your applied instructor.

For additional information, please see any Broward College full-time music faculty. They will be able to advise about healthy musical practices or get you in touch with a medical professional.

For information about permissible noise exposure and other risks, please visit Occupational Safety and Health Administration's website: <http://www.osha.gov>.

Vocal Studies Students Language Requirement:

All Broward College music students who are majoring in vocal studies **MUST** take one of the following languages: French, German or Italian. Courses in these languages are available through the Department of Communications.

Music Faculty and Staff Directory

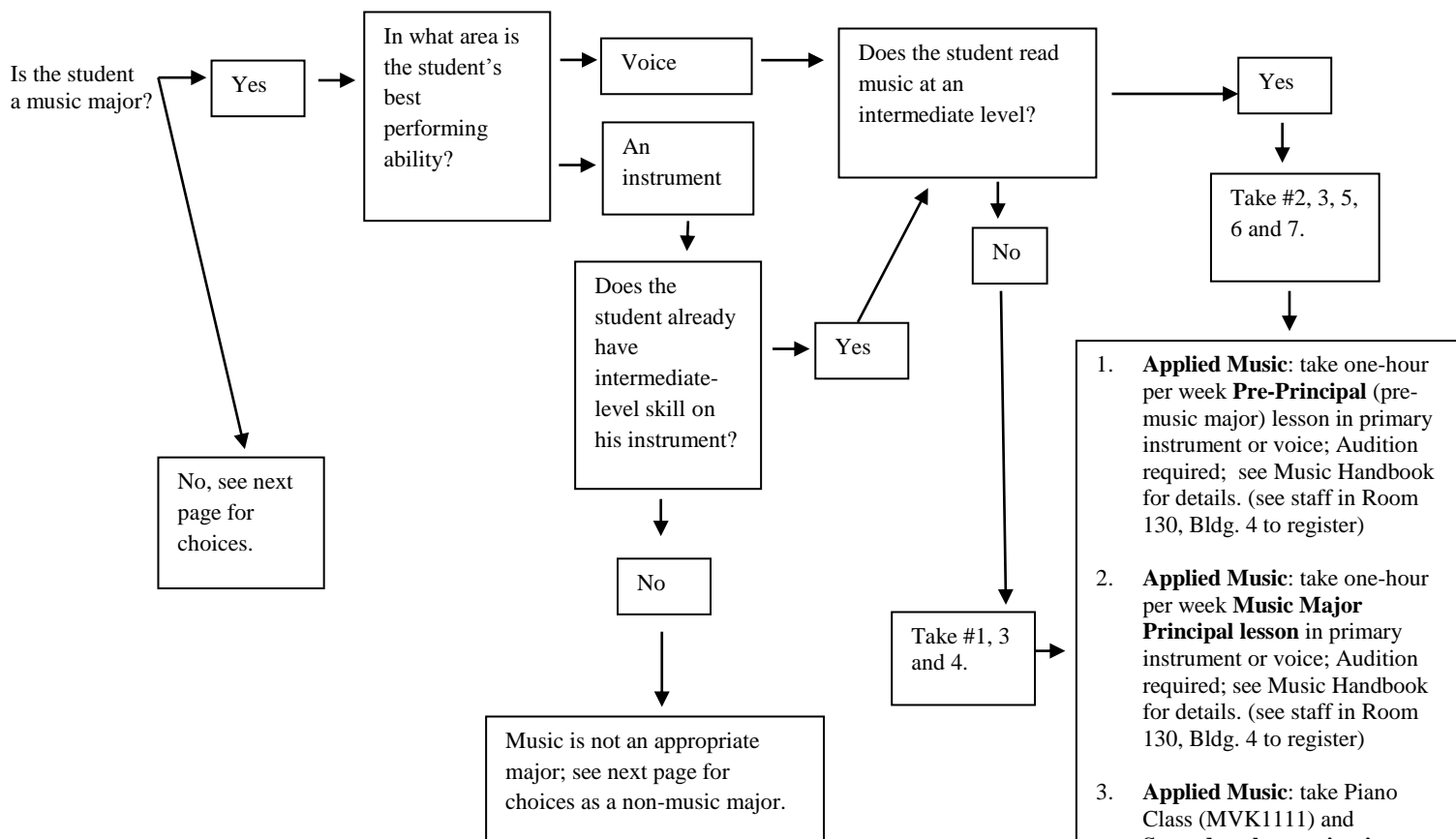
Full-time Faculty and Staff

Office Telephone E-mail
(954)

Scott Miller	Associate Dean	4/133	201-6722	wmiller1@broward.edu
Jamie Farrell	Executive Assistant	4/132	201-6840	jfarrell@broward.edu
Toni Lewis	Administrative Specialist	4/130	201-6843	tlewis2@broward.edu
Brock Burbach	Music Faculty/Coordinator – Voice, Chorus, Theory	4/129	201-6730	bburbach@broward.edu
Jason Hainsworth	Music Faculty – Sax and Jazz Combos	4/139	201-6696	jhainswo@broward.edu
Jure Rozman	Piano, Theory, Chamber	4/140	201-6943	jrozman@broward.edu
Fernando Ulibarri	Music Faculty-Jazz Guitar, Music Tech., Combos	4/138	201-6363	fulibarr@broward.edu

Adjunct Faculty

		Telephone	E-mail
Louis Abbott	Music Appreciation	954-201-6843	labbott@broward.edu
Devin Arne	Jazz Guitar, Jazz Guitar Ensemble	954-201-6843	darne@broward.edu
Paul Ayick	Trumpet, Jazz Combo, Brass Ensemble	954-201-6843	payick@broward.edu
Jay Bertolet	Tuba, Baritone Horn	954-201-6843	jbertole@broward.edu
June Capezza	Piano, Fundamentals, Sight/Ear	954-201-6843	jcapezza@broward.edu
Thomas Cavendish	Voice	954-201-6843	tcavendi@broward.edu
Randy Corinthian	Jazz Combo	954-201-6843	rcorinth@broward.edu
Richard Crawford	Theory	954-201-6843	rcrawfor@broward.edu
Jonathan Dadurka	Electric Bass, String Bass, Jazz Combo	954-201-6843	jdadurka@broward.edu
Brett Dawson	Trombone	954-201-6843	brett.dawson@browardschools.com bdawson@broward.edu
Susan Dodd	Piano	954-201-6843	sdodd@broward.edu
Mira Feldman	Piano	954-201-6843	dfeldman@broward.edu
Ashley Garritson	Cello	954-201-6843	agarrits@broward.edu
Rosalie Gregory	Piano	954-201-6843	rgregory@broward.edu
Anna Hersey	Music History	954-201-6843	ahersey@broward.edu
Neil Jenkins	Band	954-201-6843	nejenkins@aol.com njenkins@broward.edu
Carey Kleiman	Clarinet, Music Bus., Music Appreciation	954-201-6843	ckleiman@broward.edu
Catherine Lan	Theory/Sight & Ear, Piano Class	954-201-6843	clan@broward.edu
Tom Lippincott	Jazz Guitar	954-201-6843	tlippinc@broward.edu
Mei Mei Luo	Violin	954-201-6843	luoviolin@yahoo.com mluo@broward.edu
Roselida Mautner	Voice, Voice Class, Music Appreciation	954-201-6843	roselida@bellsouth.net rmautner@broward.edu
Myrna Meeroff	French Horn, Music Appreciation	954-201-6843	mmeeroff@broward.edu
Rene Miska	Flute, Music Appreciation	954-201-6843	piccdrum@bellsouth.net rmiska@broward.edu
Fabrizio Montero	Intro to Midi, Jazz Guitar	954-201-6843	
Hector Neciosup	Classical Percussion	954-201-6843	hneciosu@broward.edu hnmusicfl@gmail.com
Dennis Pitasi	Piano, Theory/Sight & Ear	954-201-6843	dpitasi@comcast.net dpitasi@broward.edu
Tom Smith	Classical Guitar	954-201-6843	ClassicalTGS@aol.com tsmith2@broward.edu
Kenneth Strattan	Music Appreciation	954-201-6843	kstratta@broward.edu
Angelo Versace	Jazz Piano	954-201-6843	aversace@broward.edu
Sarah Weiner-Jamison	Voic, Music Appreciation	954-201-6843	sweiner@broward.edu
Candace Wheeler	Piano Class, Music Appreciation	954-201-6843	cwheeler@broward.edu drcwheeler@att.net
Zoe Zeniodi	Orchestra	954-201-6843	zzeniodi@broward.edu
Rodolfo Zuniga	Jazz Percussion, Jazz Combo	954-201-6843	rzuniga@mdc.edu



1. **Applied Music:** take one-hour per week **Pre-Principal** (pre-music major) lesson in primary instrument or voice; Audition required; see Music Handbook for details. (see staff in Room 130, Bldg. 4 to register)
2. **Applied Music:** take one-hour per week **Music Major Principal lesson** in primary instrument or voice; Audition required; see Music Handbook for details. (see staff in Room 130, Bldg. 4 to register)
3. **Applied Music:** take Piano Class (MVK1111) and **Secondary lessons in piano** (MVK1211 and MVK2221) (see staff in Room 130, Bldg. 4 to register)
4. **Fundamentals of Music** (MUT 1001)
5. **Music Theory I** (MUT 1111)
6. **Ear Training/Sight singing I** (MUT 1241)
7. **Major ensemble** (band, orchestra, Broward Choral Society, or Jazz Band; see Music Handbook for details)

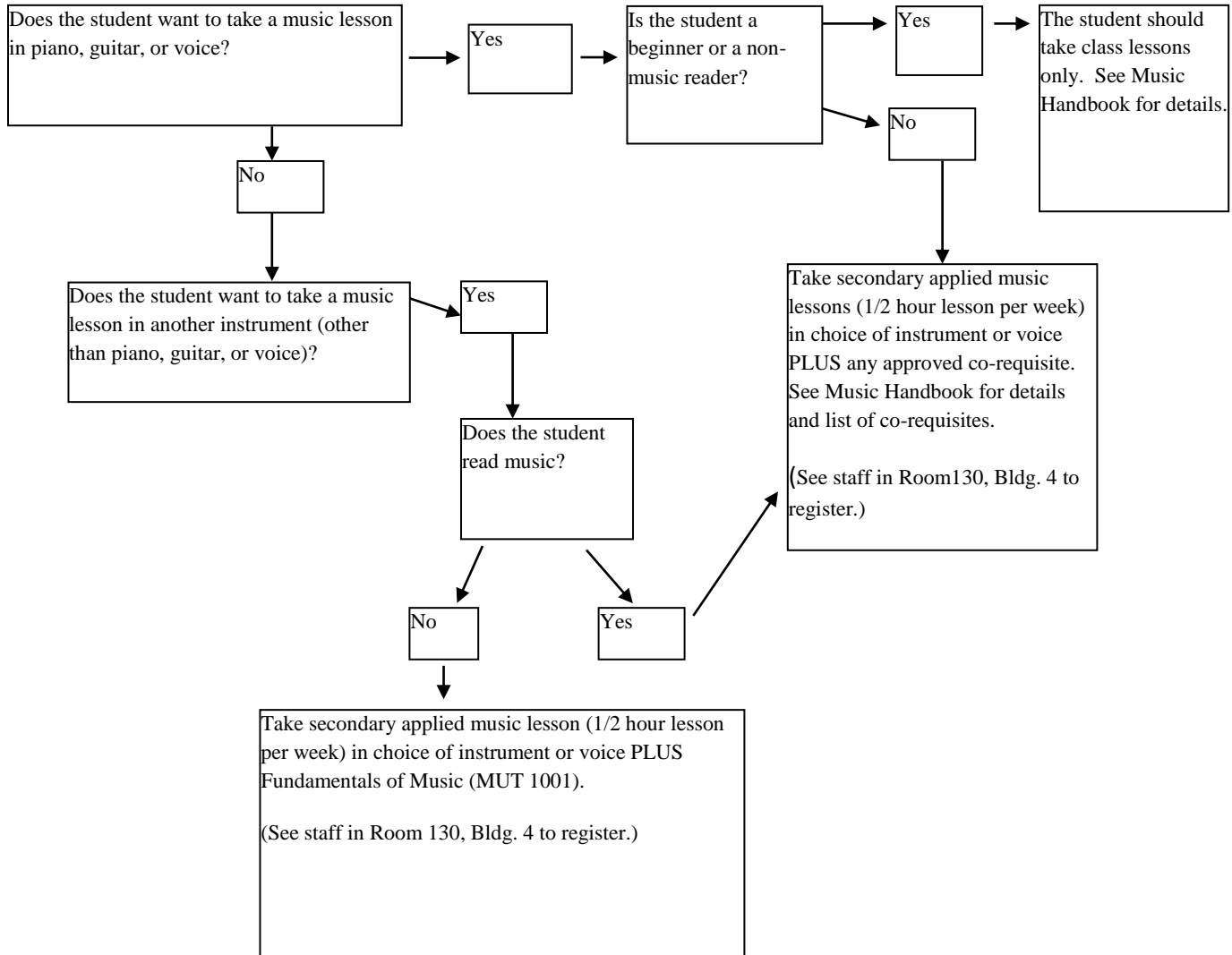
**Self-Advising Worksheet for
New Music Students**

Visual and Performing Department - Broward College

Questions?
Please contact the music department in Room 130, Bldg. 4 - 954-201-6840

Non-Music Majors:

(continued)



Broward College -Visual and Performing Arts Department

Audition Information for New Music Majors

General Information

Music majors are expected to have performing skills on an instrument or voice before beginning their college study. In order to ensure that entering students who wish to become music majors have the necessary performing skills that are needed to be successful in that major, an audition for one of the music faculty is required. At this audition students can be counseled about the course of study appropriate for their particular skill level. Students who are currently taking music major lessons are not required to re-audition.

This audition is mandatory for new music majors or for current students who wish to request a principal (music major) applied lesson for the first time. New music majors are registered for lessons in their principal area at the Pre-Principal skill level; when the audition is successfully completed prior to, or during the first week of classes, the course number will be changed from Pre-Principal (college preparatory) to Principal (music major) skill level. If the audition is not successful, the student has the option of withdrawing with a refund or staying in the Pre-Principal applied lesson. If a new music major does not complete the audition, he will be required to stay in the Pre-Principal skill level for lessons; Pre-Principal major lessons do not transfer to the university as a music-major course.

Audition Registration

Please sign up with the music secretary, in Room 130, Bldg. 4, Central Campus. The music secretary will assist in determining the best audition day/time for your instrument and schedule.

Music Selection for Audition

Bring two selections in contrasting style to perform at the audition. Performing from memory is an option. An accompanist will not be provided. Vocalists should expect to sing a short selection a cappella, a scale, and will perform a tonal memory exercise during their audition.

For More Information

If you have questions or special needs, please telephone the music secretary at 954/201-6843.

MUSIC SCHOLARSHIP POLICIES

AWARDING OF SCHOLARSHIPS:

Scholarships awarded by the Broward College's Visual and Performing Arts Department are awarded after an audition on the basis of talent, performing ability and participation in the overall music program. Scholarship auditions take place at the end of the winter term in late March or early April. In order to receive a scholarship, the student must maintain a minimum over-all grade point average of 2.5, be officially registered as a degree-seeking student, and take a minimum of six credit hours. All scholarship students are required to complete the FAFSA form before the scholarship can be awarded.

SCHOLARSHIP AUDITION REQUIREMENTS:

Two solo works of contrasting styles are required for the audition. Performance by memory is encouraged but not required. Sight reading may be requested. An accompanist is available for the audition; students may bring their own accompanist or may use a prerecorded, taped accompaniment. Any special needs such as equipment or special accommodation must be communicated to the department in advance of the audition date.

SCHOLARSHIP ACCEPTANCE:

Audition results are normally communicated by mail within two weeks of the audition. Scholarship offers are accompanied by a scholarship acceptance form that must be returned to the department by the indicated date. In accepting a scholarship, the student may be asked to sign an agreement requiring him/her to perform in certain ensembles, to take certain classes, and/or to perform certain departmental duties. If a student decides not to attend Broward College after a scholarship is already accepted, the student must send written notice of his decision to the Visual and Performing Arts department immediately. Anyone who is declined for a scholarship may re-audition during the next academic term.

DISTRIBUTION OF SCHOLARSHIP AWARD:

Regular music scholarships are reimbursement scholarships; scholarship money is sent directly to students shortly after midterm each semester. Service scholarships for Seahawk Singers and the President's Ensemble are also reimbursement scholarships; students on these scholarships receive the scholarship funds on the recommendation of the ensemble director after semester grades are submitted.

RENEWAL OF SCHOLARSHIPS:

Renewal of a scholarship is on a semester basis and is based on a faculty review. This review will consist of the following evaluations:

- a. Performance level in any required theory and sight singing - ear training courses
- b. Satisfaction of scholarship agreement (i.e., ensemble participation and/or other duties)
- c. Successful progress in applied performance level
- d. Fulfillment of basic college wide requirements to maintain scholarship

Students renewing scholarships and requesting an increase in the amount of the scholarship must obtain a recommendation from their major applied teacher and/or their major ensemble director. All music scholarships may be renewed up to and including the student's fourth semester at BC; scholarships may not be renewed after the fourth semester.

NEW SCHOLARSHIPS FOR CURRENTLY ENROLLED STUDENTS:

A currently enrolled student who is not on scholarship may use a performance on one of the first two student recitals of the term as a scholarship audition. The student must contact the scholarship coordinator who will ensure that the proper paperwork is completed and will arrange the audition with the student and staff. Scholarship auditions scheduled after the term starts are permitted only if funding is available.

SERVICE SCHOLARSHIPS AVAILABLE FOR MUSIC STUDENTS:

In addition to regular music scholarships, service scholarships are available for participation in one of the department's audition-only select groups: Seahawk Singers (vocal pop ensemble) and President's Ensemble (instrumental jazz combo). These groups have multiple required performances each semester. For audition information, please watch the bulletin board outside Room 130, Bldg. 4.

OTHER FINANCIAL AID:

Receiving a music scholarship does not necessarily preclude a student from receiving other financial aid. Students should inquire at the financial aid office for other information.

POLICIES AND GUIDELINES FOR APPLIED MUSIC (MUSIC LESSONS)

GENERAL APPLIED MUSIC INFORMATION:

Lesson times are based on the academic hour, one-hour lessons will be 50 minutes of lesson time per week and one-half-hour lessons will be 25 minutes of lesson time per week. Applied music instructors will provide each student an attendance policy at the first lesson of the semester. The final grade is determined on a point system; see the “Applied Music Lesson Log” form at the end of this handbook.

Students who miss a scheduled lesson should notify the instructor 24 hours in advance of the intended absence. It is at the discretion of the instructor to make up lessons missed due to students’ absences. Lessons that are canceled by the instructor will be made up before the end of the semester. Lessons missed because of college holidays or emergency closings will not be made up.

According to the official BC class attendance policy, students who will be absent to observe a religious holy day in his faith will notify the instructor in advance. Students who need to miss a lesson because of a religious holy day or because of serious illness, death in the immediate family or statutory government responsibilities may do so without penalty; the music lesson grading form has one week of lessons built into the grading system that can be missed without penalty. A student who needs to miss more than one week of lessons should consult with the instructor.

Students receiving music department scholarships are not permitted to change their applied music class from credit to audit status during the semester.

All students, both music majors and non-music majors, taking applied music are required to take a jury exam at the end of the semester.

Principal level students must perform in a student recital each semester. Failure to do so will result in the loss of 25 points from their semester grade.

Forums: Three forums are scheduled in the middle of each semester on Friday mornings, these forums provide all applied students more performance opportunity and helpful criticism from instructors within their specific area (instrumentals, piano, voice, jazz.) **All principal and pre-principal applied students must attend each forum or 2 points will be deducted from their lesson grade for each absence, and must perform in at least one forum each semester.** Secondary students are highly encouraged to attend. Recital dress code applies.

STUDENT RECITAL REQUIREMENTS:

A. General Information

All students taking applied music lessons at the music major principal skill level (course number 13xx or 23xx) are required to perform each semester in one or more of the music department student recitals. Students taking applied music lessons at the pre-principal or secondary level (course numbers 10xx and 12xx) may also perform on the student recitals if there is time remaining after all principal level students have signed up, and upon the recommendation of their applied music teacher.

B. Registration

Registration for recitals is required near the beginning of the semester. After consultation with the major applied instructor, students sign up for the date(s) of their choice on the sign-up sheets posted on the bulletin board located outside Room 130, Bldg. 4. Students are advised to sign up as early as possible because the last, preferred dates always fill up quickly. Students who are required to perform on a department student recital and who fail to complete the student recital performance will have a serious grade penalty. Students are not permitted to perform original works without permission of the applied teacher and the music program coordinator.

Detailed information for the recital program must be given to the recital coordinator at least one week before the recital date. There is a folder on the recital coordinator's office door where this form may be deposited. A copy of the form to use for this information is included in this handbook. If you have questions regarding student recitals please contact the music secretary at 954-201-6843 for the contact information of the current recital coordinator.

C. Length of Works

Works that are longer than five minutes must be scheduled for one of the first four recitals.

D. Multiple Performances

Due to space limitations, students may only perform on one recital per term.

E. Recital Dress Code

- A. The following are not permitted: costumes, jeans, t-shirts, shorts, flip-flops, sneakers, hats, tuxedos, prom/cocktail dresses
- B. Suggestions for appropriate attire: Men: Shirt with tie, nice trousers, hard-soled shoes
Women: Conservative pant suit or nice trousers/shirt
Conservative dress (knee-length or longer, but not floor length)

Please note that attire must cover the entire midriff section of the body; there must be no skin showing from the bottom of the shirt to the top of trousers or skirt when standing or seated.

Student should review his intended dress with the applied instructor before the recital. The department has the authority to deny permission for the student to perform if the student's attire is deemed unacceptable by the Recital Coordinator. If performance is denied, the student may sign up for a later recital date but only if space is available, or the student may fail the student recital portion of their applied lesson grade.

F. Print Music

Students are expected to own and use original scores of the work(s) performed in student recitals. Use of photocopied literature in performance is not permitted.

Music Ensembles

GENERAL INFORMATION

Music ensembles are open to all students, regardless of major, as well as members of the general community. Instrumental ensembles require that members own/rent their own instruments, on which some proficiency is already established. Rehearsals take place on Central Campus, located in the city of Davie.

Ensembles vary widely in the level of required performing proficiency. Some are audition only; others are open to all who wish to join. See individual ensemble descriptions below. Refer to the current class schedule for reference numbers.

INSTRUMENTAL ENSEMBLES

Band - (Course # MUN1180 or MUN1120)

Mondays; from 7:00-9:50 p.m.; Room 104, Bldg. 4, Central Campus

This ensemble is a large group of 90 – 100 performers. The group performs in Bailey Hall four times a year, and is dedicated to the performance of quality concert band literature of all styles. The band is open to all who wish to participate; members are expected to have playing proficiency. The only audition is for chair placement, usually at the first rehearsal of the semester.

Orchestra - (Course #MUN1210 or MUN1280)

Thursdays; from 7:00-9:50 p.m.; Room 104, Bldg. 4, Central Campus

This college/university/community group consists of approximately 75 members and performs twice a semester. The orchestra is recognized in the South Florida area for its high quality, low cost concerts in Bailey Hall. Membership in this group is by audition only; auditions take place the first rehearsal of the semester.

Jazz Ensemble - (Course #MUN1710 or MUN1780)

Tuesdays; from 7:00 – 9:50 p.m., Room 104, Bldg. 4, Central Campus.

This jazz group performs the best of the "big band" jazz literature. Membership is by audition only at the first rehearsal or permission of the director.

Jazz Combo – (Course# MUN1711)

1. Mondays and Wednesdays; from 12:30-1:45, Room 104, Bldg. 4, Central Campus
2. Mondays and Wednesdays; from 2:00-3:15, Room 104, Bldg. 4, Central Campus
3. Tuesdays and Thursdays; from 9:30-10:45, Room 104, Bldg. 4, Central Campus.
4. Tuesdays and Thursdays; from 11:00-12:15, Room 104, Bldg. 4, Central Campus
5. Tuesdays and Thursdays; from 12:30–1:45, Room 104, Bldg. 4, Central Campus
6. Tuesdays and Thursdays; from 2:00-3:15, Room 104, Bldg. 4, Central Campus
7. Tuesdays and Thursdays; from 3:30-4:45, Room 104, Bldg. 4, Central Campus

These groups perform regularly on campus and in the community. Registered students who complete the semester's requirements receive a scholarship at the end of the term. Membership is by audition only at the first rehearsal or permission of the director.

Jazz Guitar Ensemble - (Course #MUN1481)

Mondays and Wednesdays; from 11:00 a.m. to 12:15 p.m., Room 149, Bldg. 4, Central Campus

Mondays and Wednesdays; from 12:30 – 1:45 p.m., Room 149, Bldg. 4, Central Campus

This small ensemble is designed for jazz guitar students who need the experience of music reading and playing in a group setting. (Music reading required, membership is by audition only or permission of the director.)

Brass Ensemble – (Course #MUN1460)

Time; TBA based on student schedules.

This small ensemble is designed for brass students who need the experience of music reading and playing in a group setting. (Music reading required and membership is by audition only or permission of the director.)

Classical Guitar Ensemble - (Course #MUN1480)

Fridays; from 1:00 – 3:50 p.m., Room 110, Bldg. 4, Central Campus

This small ensemble is designed for classical guitar majors, or non-majors with playing/music reading skills. Membership is by audition or permission of the director.

Percussion Ensemble - (Course #MUN 1440)

Fridays; from 1:00 – 4:00 pm, Bldg. 4, Room 149 Central Campus

All percussionists are invited to play with this exciting group. Music reading is required. Membership is by audition or permission of the director.

Chamber Music Ensemble – (Course #MUN1460)

Meeting days/times to be announced

A small group ensemble for experienced students with excellent playing and reading skills. Students will be divided into chamber groups, as appropriate to the chamber media and number of members. They will be expected to rehearse individually, with their group and take part in weekly coaching with the instructor. In particular, pianists, instrumental and voice majors are encouraged to apply. Performances will take place during student recitals or at a separate recital, if appropriate. Membership in this group is by audition or permission by the director.

VOCAL ENSEMBLES

Choral Society - (Course #MUN1380 or MUN1310)

Rehearsal times

For Voice Majors or students who have auditioned and been selected for day Chorus:

Mondays and Wednesdays; from 11:00 a.m. – 12:15 p.m., Room 109, Bldg. 4, Central Campus

For anyone who likes to sing:

Tuesdays; from 6:00-8:50 p.m., Room 109, Bldg. 4, Central Campus

This 100-voice choral ensemble comprised of students from Broward College along with singers from the South Florida community has a long tradition of excellence in the performance of choral literature of all styles, from major oratorios, masses and requiems to Broadway medleys, and standard choral literature. The group is open to all who like to sing; Monday/Wednesday – non vocal majors are required to audition. Tuesday night Choir – no audition required.

Seahawk Singers Vocal Ensemble - (Course #MUN1341 or MUN1340)

Tuesdays and Thursdays; from 9:30 a.m.–10:45 a.m., Room 109, Bldg. 4, Central Campus

This group is the College's prestigious select choir, comprised of 16-24 experienced singers. Auditions take place during the first rehearsal of the semester. The vocal repertoire ranges from a cappella literature of the Renaissance through the 20th century to vocal Jazz, Broadway, and opera scenes. Check the bulletin board outside Room 130, in Bldg. 4, for audition information.

Curriculum for Music Majors

In addition to BC's General Education requirements, all music majors (regardless of music program name) need to take the following. Note that the courses are sequential and that missing a semester will usually require another complete year of college. Students who transfer to a university with courses missing will typically need to spend an extra year at the university.

Semester 1 (Fall):

MUT1111 – Music Theory I (3 credits)

MUT1241 – Ear Training and Sight singing I (1 credit)

MUNxxxx – Major Ensemble (1 credit)

(Choose from Concert Band, Orchestra, Broward Choral Society, Jazz Ensemble or alternate ensemble if recommended by faculty advisor)

MVx131x – Applied Music Lesson - Principal Level (1 credit)

MVK1111 – Piano Class (1 credit)

(Secondary piano does not fit within the 60 credit hours for the A. A. degree; piano proficiency is, however, required for all music majors. See note below about requesting an exemption.)

Semester 2 (Winter):

MUT1112 – Music Theory II (3 credits)

MUT1242 – Ear Training and Sight singing II (1 credit)

MUNxxxx - Major Ensemble (1 credit)

MVx131x – Applied Music Lesson - Principal Level (1 credit)

MVK1211 – Applied Music Lesson – Secondary piano* (1 credit)

Semester 3 (Fall):

MUT2116 – Music Theory III (3 credits)

MUT2246 – Ear Training and Sight singing III (1 credit)

MUNxxxx - Major Ensemble (1 credit)

MVx232x – Applied Music Lesson - Principal Level (1 credit)

MVK2221 – Applied Music Lesson – Secondary piano* (1 credit)

MUH2111 – Music History I (3 credits) – (counts as a Humanities credit for the A. A. degree)

Semester 4 (Winter):

MUT2117 – Music Theory IV (3 credits)

MUT2247 – Ear Training and Sight singing IV (1 credit)

MUNxxxx - Major Ensemble (1 credit)

MVx232x – Applied Music Lesson - Principal Level (1 credit)

MVK2221 – Applied Music Lesson – Secondary piano* (1 credit)

MUH2112 – Music History II (3 credits) (This course counts as a second Humanities credit for the A. A. degree; music majors are permitted to take two humanities in the same field as an exception.)

***Piano proficiency** is required of all music majors. If a student comes with advanced playing skills, he may request an exemption from the secondary piano requirement by arranging a proficiency exam.

Voice majors should consult the degree requirements for the university to which they expect to transfer; foreign language skills are usually expected in Italian, French, and/or German. BC offers classes in all three languages.

Piano majors should take an additional instrument (or voice) as their secondary area of applied study.

Students who plan to major in **music education** at the university need to carefully note the specific classes in the non-music area that this university degree in Florida requires. See the program sheet at www.broward.edu. Students planning on attending a Florida university should expect to spend more than two years completing the Bachelor's degree in music education.

Vocal Studies Students Language Requirement All Broward College music students who are majoring in vocal studies **MUST** take one of the following languages: French, German or Italian. Courses in these languages are available through the Department of Communications.

****THE VISUAL AND PERFORMING ARTS DEPARTMENT CANNOT REGISTER DUAL ENROLLMENT STUDENTS – THEY NEED TO SEE THEIR ADVISOR****



Visual & Performing Art/Curriculum Map

Students should meet with a department representative in the Visual & Performing Arts Office in Building 4 each semester for further advisement.

semester one	general education requirements (9 cr)	MUT1111 Music Theory I (3 cr)	MUT Ear Training & Sightsinging I (1 cr)	MUNxxxx Major Ensemble (1cr)	MVx131x Applied Music Lesson Principal Level (1cr)	MVK1111 Piano Class (1cr)	
semester two	general education requirements (9 cr)	MUT1112 Music Theory II (3 cr)	MUT Ear Training & Sightsinging II (1 cr)	MUNxxxx Major Ensemble (1cr)	MVx131x Applied Music Lesson Principal Level (1cr)	MVK1211 Applied Music Lesson Secondary Piano (1cr)	
semester three	general education requirements (9 cr)	MUT2116 Music Theory III (3 cr)	MUT Ear Training & Sightsinging III (1 cr)	MUNxxxx Major Ensemble (1cr)	MVx232x Applied Music Lesson Principal Level (1cr)	MVK2221 Applied Music Lesson Secondary Piano (1cr)	MUH2111 Music History I 3(cr)
semester four	general education requirements (9 cr)	MUT2117 Music Theory IV (3 cr)	MUT Ear Training & Sightsinging IV (1 cr)	MUNxxxx Major Ensemble (1cr)	MVx232x Applied Music Lesson Principal Level (1cr)	MVK2221 Applied Music Lesson Secondary Piano (1cr)	MUH2112 Music History II (3cr)

Note: Declared Music major students MUST submit to an audition process at the beginning of their studies. Those students who declare music as a major but cannot read music MUST take MUT1001 Fundamentals of Music in order to progress in their major. Music majors should look at the Broward College catalog for full details as to the composition of the general education component of their curriculum. Broward College’s Music Program is fully accredited by the National Association of Schools of Music.

Students who want to be music majors but are not currently at an intermediate music reading must take **Fundamentals of Music** (MUT1001) prior to Theory – Sight/Ear training.

Primary Instrument: If student already reads music at an intermediate level – they will either take pre-principal, or principal lessons in their primary instrument or voice. Audition required.

Secondary Piano: Class Piano – MVK1111 (term 1), applied lesson ½ hour in piano MVK1211 (term 2), and MVK2221 (terms 3 & 4)

Vocal Studies Students Language Requirement:

All Broward College music students who are majoring in vocal studies **MUST** take one of the following languages: French, German or Italian. Courses in these languages are available through the Department of Communications.

Applied Music Lesson Grading Form

Course Number: _____ Reference Number: _____ Instrument: _____

Student: _____ Instructor: _____ Semester and Year: _____

Instructor Instructions: Please complete the chart below each week at the end of the student's lesson; please discuss the results with the student and have student initial in the box at the end of the line. Student's

Lessons: _____ Evaluation Criteria: (5 points per week maximum) Points: Initials:

Lesson	Preparation/Practice	Technical advancement	Attendance	Some practice	Some progress	inadequate practice		
Lesson 1, Comments:	adequate practice 2 pts.	expected progress 2 pts.	full lesson 1 pt.	Some practice 1 pt.	Some progress 1 pt.	inadequate practice 0 pts. no progress 0 pts. absent 0 pts.		
Lesson 2, Comments:	adequate practice 2 pts.	expected progress 2 pts.	full lesson 1 pt.	Some practice 1 pt.	Some progress 1 pt.	inadequate practice 0 pts. no progress 0 pts. absent 0 pts.		
Lesson 3, Comments:	adequate practice 2 pts.	expected progress 2 pts.	full lesson 1 pt.	Some practice 1 pt.	Some progress 1 pt.	inadequate practice 0 pts. no progress 0 pts. absent 0 pts.		
Lesson 4, Comments:	adequate practice 2 pts.	expected progress 2 pts.	full lesson 1 pt.	Some practice 1 pt.	Some progress 1 pt.	inadequate practice 0 pts. no progress 0 pts. absent 0 pts.		
Lesson 5, Comments:	adequate practice 2 pts.	expected progress 2 pts.	full lesson 1 pt.	Some practice 1 pt.	Some progress 1 pt.	inadequate practice 0 pts. no progress 0 pts. absent 0 pts.		
Lesson 6, Comments:	adequate practice 2 pts.	expected progress 2 pts.	full lesson 1 pt.	Some practice 1 pt.	Some progress 1 pt.	inadequate practice 0 pts. no progress 0 pts. absent 0 pts.		
Lesson 7, Comments:	adequate practice 2 pts.	expected progress 2 pts.	full lesson 1 pt.	Some practice 1 pt.	Some progress 1 pt.	inadequate practice 0 pts. no progress 0 pts. absent 0 pts.		
Lesson 8, Comments:	adequate practice 2 pts.	expected progress 2 pts.	full lesson 1 pt.	Some practice 1 pt.	Some progress 1 pt.	inadequate practice 0 pts. no progress 0 pts. absent 0 pts.		
Lesson 9, Comments:	adequate practice 2 pts.	expected progress 2 pts.	full lesson 1 pt.	Some practice 1 pt.	Some progress 1 pt.	inadequate practice 0 pts. no progress 0 pts. absent 0 pts.		
Lesson 10, Comments:	adequate practice 2 pts.	expected progress 2 pts.	full lesson 1 pt.	Some practice 1 pt.	Some progress 1 pt.	inadequate practice 0 pts. no progress 0 pts. absent 0 pts.		
Lesson 11, Comments:	adequate practice 2 pts.	expected progress 2 pts.	full lesson 1 pt.	Some practice 1 pt.	Some progress 1 pt.	inadequate practice 0 pts. no progress 0 pts. absent 0 pts.		
Lesson 12, Comments:	adequate practice 2 pts.	expected progress 2 pts.	full lesson 1 pt.	Some practice 1 pt.	Some progress 1 pt.	inadequate practice 0 pts. no progress 0 pts. absent 0 pts.		
Lesson 13, Comments:	adequate practice 2 pts.	expected progress 2 pts.	full lesson 1 pt.	Some practice 1 pt.	Some progress 1 pt.	inadequate practice 0 pts. no progress 0 pts. absent 0 pts.		
Lesson 14, Comments:	adequate practice 2 pts.	expected progress 2 pts.	full lesson 1 pt.	Some practice 1 pt.	Some progress 1 pt.	inadequate practice 0 pts. no progress 0 pts. absent 0 pts.		

Instructors: for lessons missed because of college holidays or closings, please record the weekly average points.

Drop the lowest weekly grade and add 13 remaining grades. Weekly maximum is 5 points.

Points earned from weekly lessons: _____
(Maximum – 65 points)

Area Forum Class Attendance: **Mandatory for Pre-Principal and Principal level students.**

****2POINT REDUCTION FOR EACH FORUM MISSED OFF OF FINAL GRADE****

Points from jury: _____
(Maximum – 35 points)

Recital Performance: Does this course number require performance in a student recital? _____

If yes, on what date did the student perform? _____

If yes and the student did not complete the required student recital performance, please deduct 25 points from the semester total.

Faculty Signature: _____

Total Semester Points: _____

Grading Scale: 90-100 = A / 80 – 89 = B / 70 – 79 =C / 60 – 69 = D / 59 – 0 = F

Final Grade : _____

STUDENT RECITAL PROGRAM INFORMATION

****Incomplete or Late Forms Will Not Be Accepted****

Please leave this completed form on the office door of the Music Coordinator,
Bldg. 4 **at least one week** before the recital date.

Student's Name (Please Print): _____

Telephone Number: _____ Recital Date: _____ Recital Time: _____

Work to be performed: Full Title: _____

(Movement/Section/Opera/Large Work): _____

Composer: _____

Instrument or voice type: _____

Duration: _____

Accompanist's Name (if any): _____

Applied Teacher's Signature: _____

(Please leave this completed form on the office door of the Music Coordinator, Bldg. 4 at least one week before the recital date. Late forms may not be accepted.)

STUDENT RECITAL PROGRAM INFORMATION

****Incomplete or Late Forms Will Not Be Accepted****

Please leave this completed form on the office door of the Music Coordinator,
Bldg. 4 **at least one week** before the recital date.

Student's Name (Please Print): _____

Telephone Number: _____ Recital Date: _____ Recital Time: _____

Work to be performed: Full Title: _____

(Movement/Section/Opera/Large Work): _____

Composer: _____

Instrument or voice type: _____

Duration: _____

Accompanist's Name (if any): _____

Applied Teacher's Signature: _____

(Please leave this completed form on the office door of Music Coordinator, Bldg. 4 at least one week before the recital date. Late forms may not be accepted.)